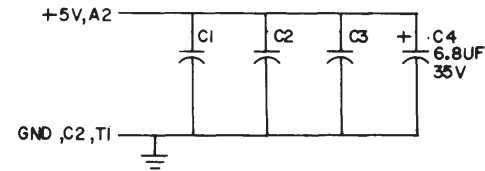
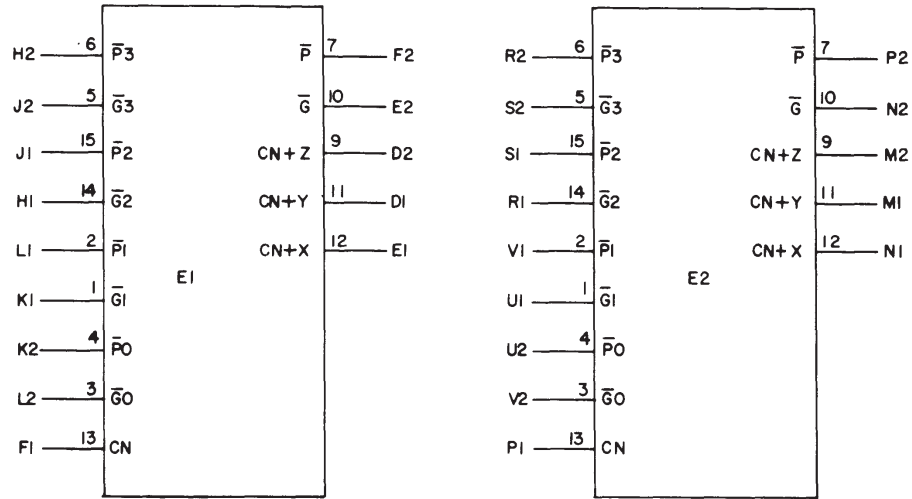


THIS SCHEMATIC IS FURNISHED ONLY FOR TEST AND MAINTENANCE PURPOSES. THE CIRCUITS ARE PROPRIETARY IN NATURE AND SHOULD BE TREATED ACCORDINGLY. COPYRIGHT 1970 BY DIGITAL EQUIPMENT CORPORATION



UNLESS OTHERWISE INDICATED:
 E1, E2 ARE DEC74182
 PIN 8 = GND ON E1, E2
 PIN 16 = +5V
 CAPACITORS ARE .01UF, 100V, 20%

REVISIONS	CHK	CHG NO	REV	C	DRN NANCY MOORE	DATE	TRANSISTOR & DIODE CONVERSION CHART					TITLE LOOK-AHEAD LOGIC		
	00001					8/21/70	DEC	EIA	DEC	EIA		FOR 74181 M191		
					CHK'D	DATE					SIZE	CODE	NUMBER	REV.
					ENG	DATE					B	CS	M191-0-1	C
					PROD	DATE					PRINTED CIRCUIT REV.			C D