

# M515 Real Time Clock

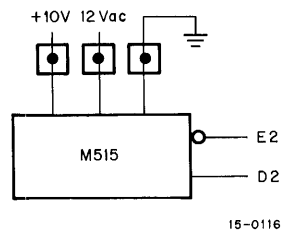
The M515 module contains a real time clock that converts conventional sinusoidal power waveforms into timing gates. Complementary timing gates are available at the output pins of the module (see illustration).

The following are the input, output, and power characteristics of the M515 module.

**INPUTS:** The input is 12 Vac.

**OUTPUTS:** The output at pin D2 is capable of driving 36 unit loads, and the output at pin E2 is capable of driving 31 unit loads.

**POWER:** Power dissipation of the M515 module is 5V at 55 mA and 10V at 30 mA.



M515 Simplified Diagram