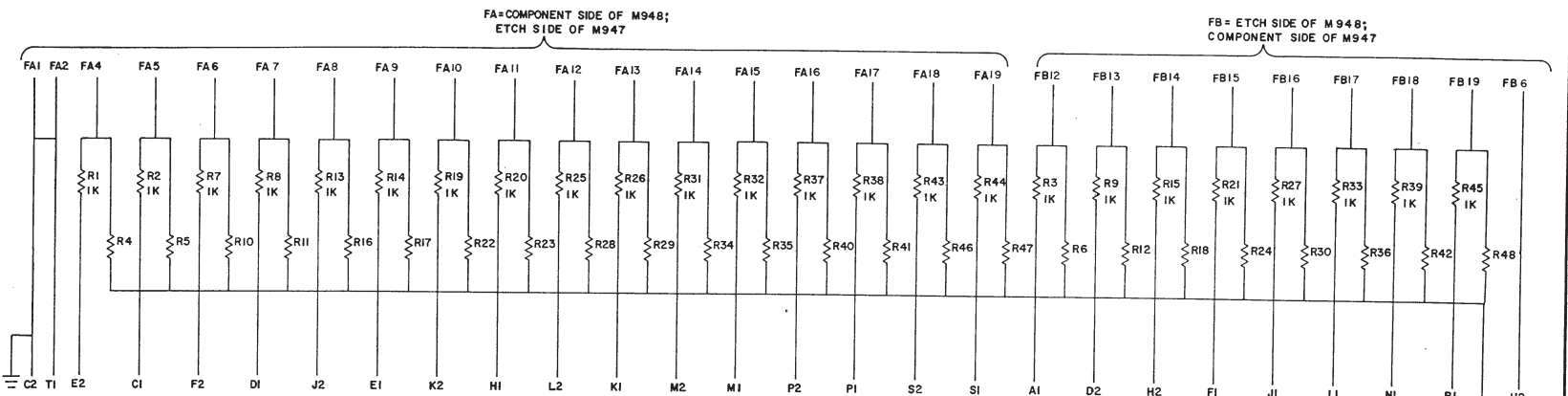
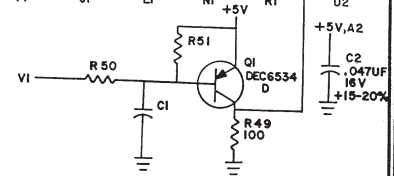
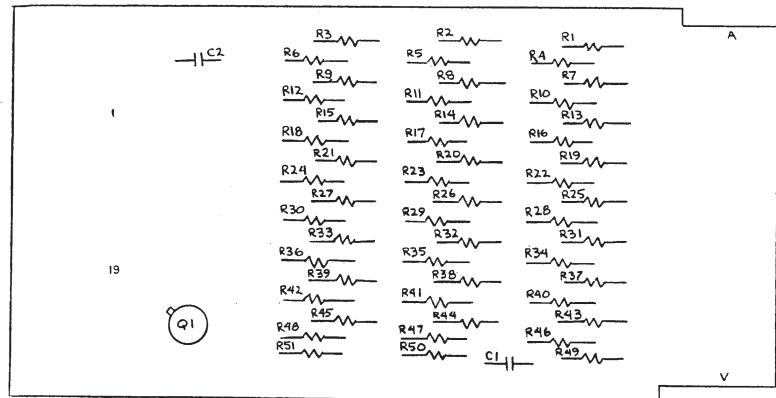


THIS SCHEMATIC IS FURNISHED ONLY FOR TEST AND MAINTENANCE PURPOSES. THE CIRCUITS ARE PROPRIETARY IN NATURE AND SHOULD BE TREATED ACCORDINGLY. COPYRIGHT 1970 BY DIGITAL EQUIPMENT CORPORATION.



UNLESS OTHERWISE INDICATED:
RESISTORS ARE 3.3K, 1/4W, 5%
CAPACITORS ARE .01UF, 100V, 20%



ITEM NO.	QTY	DESCRIPTION	REV.
10	1	1503409-00 TRANSISTOR DEC 6534D	1
9	26	1300439 RES. 3.3K 1/4W 5%	26
8	24	1300365 RES. 1K 1/4W 5%	24
7	1	1300231 RES. 100 1/4W 10%	1
6	1	1009678 CAP. .047 UF 16V 50 -20%	1
5	1	1001610 CAP. .01 UF 100V 20% DISC	1
4	1	5009449 ETCHED CKT. BOARD	1
3		B-MH-Y948-0-6 MODULE ECO HISTORY	
2		C-AH-Y948-0-5 ASSY/DRILLING HOLE LAYOUT	
1		K-CO-Y948-0-4 X-Y COORDINATE HOLE LOCATION	
		DEC PART NO.	JTY

REVISIONS	DATE	BY	CHKD	APP'D
1	5/14/70	S. Cooper		
2	2/2/71	Eng. 9/11/71		
3	2/19/71			

TRANSISTOR & DIODE CONVERSION CHART			
DEC	EIA	DEC	EIA
DEC6534D	MP65534		

digital		TITLE	
EQUIPMENT CORPORATION		KI 10 INDICATOR BOARD	
SIZE	CODE	NUMBER	REV.
C	CS	M948-0-1	A
PRINTED CIRCUIT REV.			B

REV. A
NUMBER M948-0-1
PART CODE CS

Part. 1300