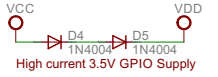
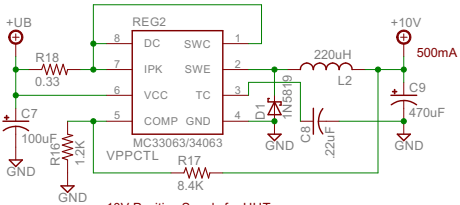


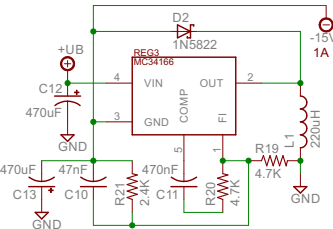
High Current Pass Regulator for Pi



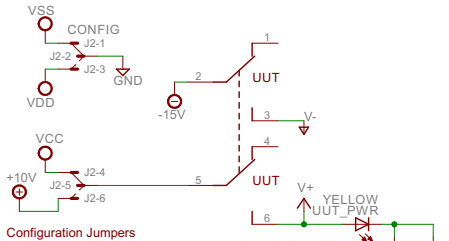
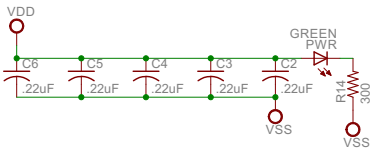
High current 3.5V GPIO Supply



10V Positive Supply for UUT



Negative Supply for UUT  
Voltage across R18 must be 5.05V.  
Voltage across R19 must be 15-5.05V=9.95V.



Configuration Jumpers

RasPi	Pin	Function
PI3V3A	1	VCC
GPIO2	3	VCC
GPIO3	5	VSS
GPIO4	7	GPIO14
VSS	9	GPIO15
GPIO17	11	GPIO18
GPIO22	15	GPIO23
PI3V3B	17	GPIO24
SU/GPIO10	19	VSS
GPIO6	31	GPIO25
CLK/GPIO11	23	CE1/GPIO8
VSS	25	CE1/GPIO7
GPIO0	27	GPIO1
GPIO5	29	VSS
GPIO8	31	RESET/GPIO12
GPIO13	33	VSS
GPIO18	35	GPIO16
GPIO26	37	GPIO20
VSS	39	GPIO21

RasPi Connector  
Warning: Pi is referenced to VCC/VSS, not GND!

