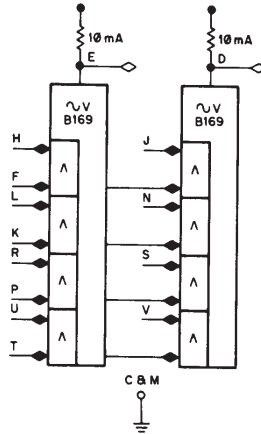


B169 DIODE GATE

Standard Size FLIP CHIP Module, 18 Pins



The B169 is a 2 mA diode gate used for performing AND/OR functions such as register input gating. The B169 will operate from standard DEC 35 ns or 40 ns negative pulses, provided that adequate fall times are maintained. It will also operate with standard DEC levels of ground and -3 V. (Pulses 70 ns or wider are considered levels.) Repetition rate may be limited to less than 10 MHz by slow fall times.

INPUTS: Input load is 2 mA per input-AND pair shared by the grounded inputs. When any pair is not being used, at least one of the two inputs must be grounded.

OUTPUTS: Standard levels of -3 V and ground. The output can drive 16 mA at ground (26 mA output minus 10 mA clamped load). 22 mA can be driven if slower rise and fall is adequate. The internal clamped load will supply -7 mA at -3 V. Typical TTT is 25 ns for output rise and 30 ns for output fall.

POWER:

Pin	Voltage	Margin Range	Current
A	+10 V	+5 V to +15 V	.8 mA
B	-15 V	-12 V to -18 V	42 mA
C, M	ground		

Both pins C and M must be grounded.