

4.2 G008 MASTER SLICE CONTROL

This module supplies the first stage clamp level, the second stage clamp level, and the slice level required by the G005 Sense Amplifier. Refer to Figure 4-2 for the module block diagram. Each circuit consists of a zener diode network with silicone diodes for temperature compensation. Emitter follower stages provide current driving capability and low-impedance outputs.

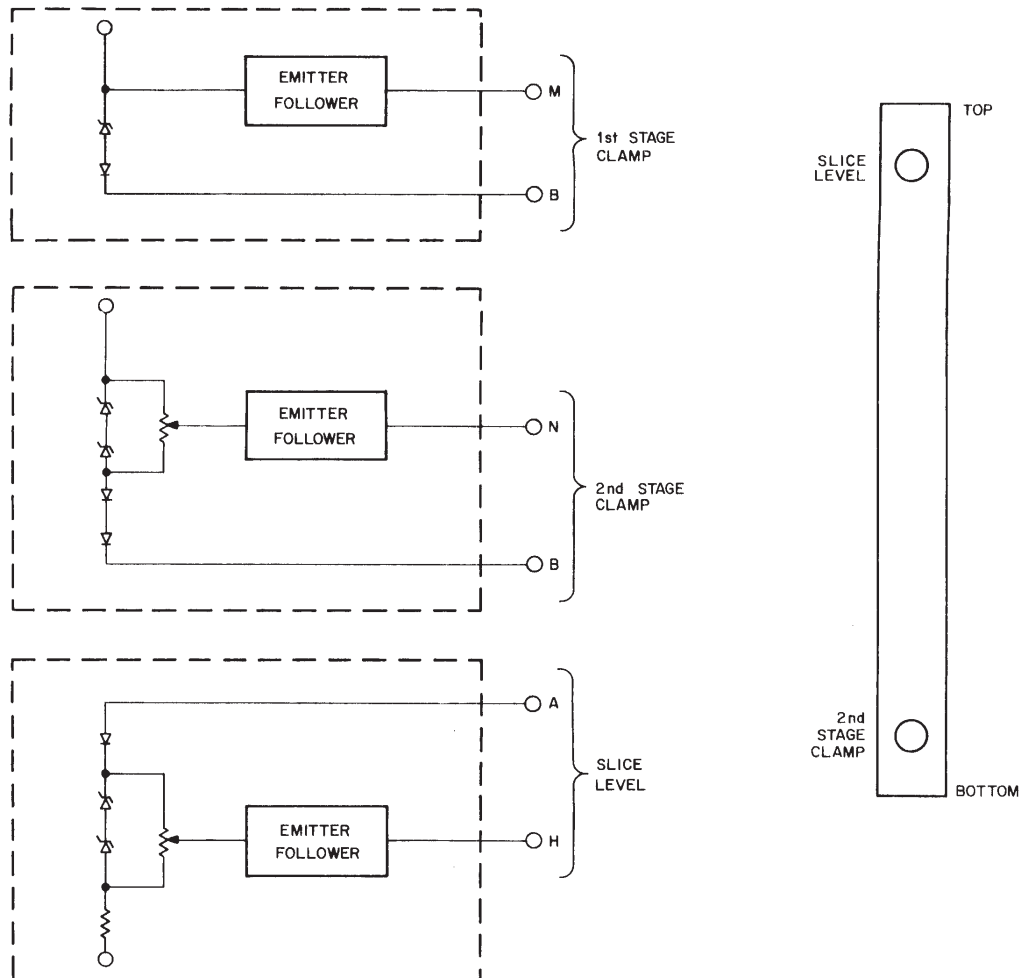


Figure 4-2 Master Slice Control

Output

First Stage (Clamp Level):	3.9 Vdc with respect to -15 Vdc
Second Stage (Clamp Level):	Variable between +0.6 and +13 Vdc with respect to -15 Vdc.