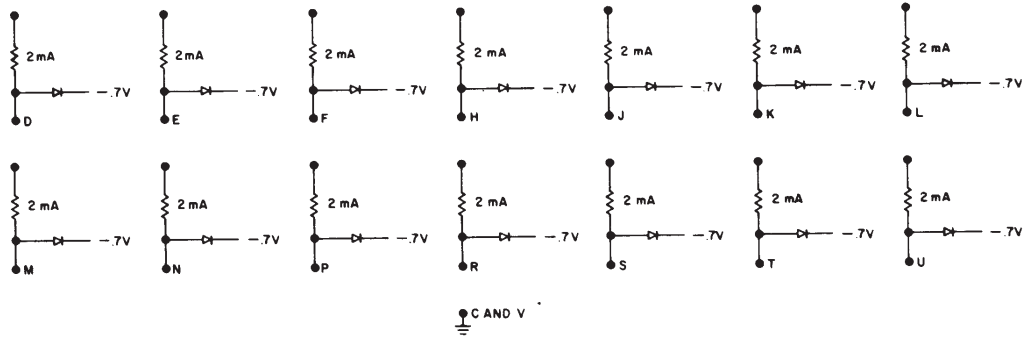


G704 2 mA LEVEL TERMINATOR

Standard Size FLIP CHIP Module, 18 Pins



The G704 provides fourteen 2-mA level terminator circuits; that is, level terminator circuits combined with 2 mA clamped loads. It is used to control overshoots and ringing on long or heavily loaded level lines as described in the wiring guidelines (Chapter 11).

INPUTS: Each circuit will prevent the signal to which it is connected from going below -3 V (-3.5 V) and from going above approximately ground. Thus, it can be used only on signal lines which have standard DEC levels of -3 V and ground. The clamped load draws 2 mA at ground and will supply -1.6 mA at -3 V .

POWER:

Pin	Voltage	Margin Range	Current
A	not used - connection optional		
B	-15 V	-7.5 V to -20 V	60 mA
C, V	ground		

Pins C and V must both be grounded.