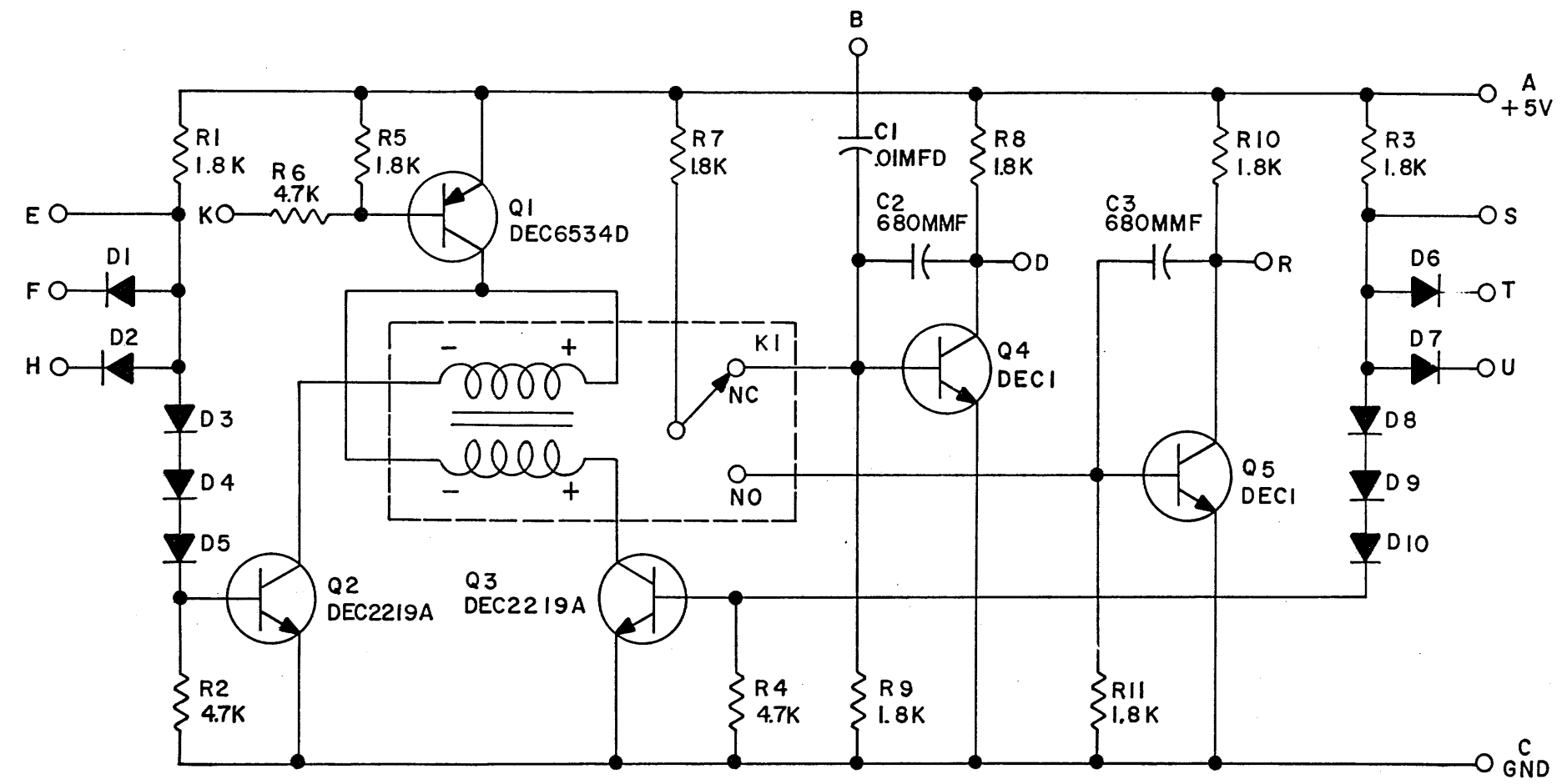


THIS SCHEMATIC IS FURNISHED ONLY FOR TEST AND MAINTENANCE PURPOSES. THE CIRCUITS ARE PROPRIETARY IN NATURE AND SHOULD BE TREATED ACCORDINGLY. COPYRIGHT 1969 BY DIGITAL EQUIPMENT CORPORATION



UNLESS OTHERWISE INDICATED:
 DIODES ARE D600
 RESISTORS ARE 1/4 W 10%
 RELAY IS MERCURY HGSM5020

REVISIONS CHK CHG NO. REV 00001	DRN. <i>2/21/69</i>	DATE 5-10-69	TRANSISTOR & DIODE CONVERSION CHART				digital EQUIPMENT CORPORATION MAYNARD, MASSACHUSETTS	TITLE SET-RESET MEMORY K271			
	CHK'D	DATE 3-11-69	DEC	EIA	DEC	EIA		SIZE B	CODE CS	NUMBER K271-0-1	REV. B
	ENG. <i>5/1/69</i>	DATE 4-1-69	D600	IN4009				PRINTED CIRCUIT REV. A			
	PROD.	DATE	DEC6534D	MPS6534							
			DEC2219A	2N2219							
			DEC1	2N3721							