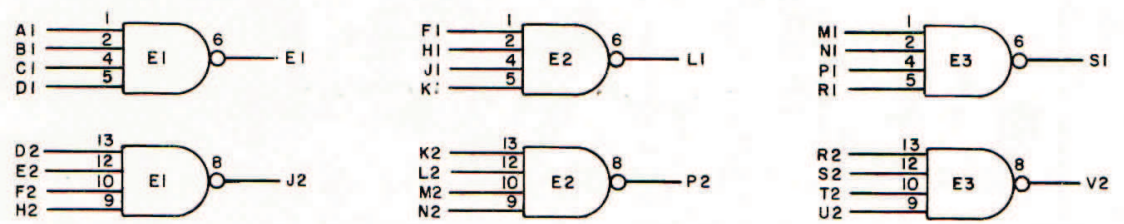
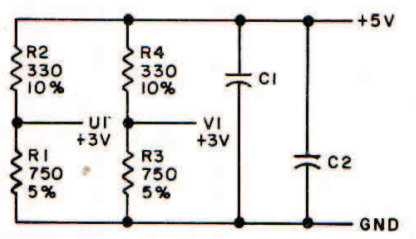


THIS SCHEMATIC IS FURNISHED ONLY FOR TEST AND MAINTENANCE PURPOSES. THE CIRCUITS ARE PROPRIETARY IN NATURE AND SHOULD BE TREATED ACCORDINGLY. COPYRIGHT 1967 BY DIGITAL EQUIPMENT CORPORATION

+5V ——— A2
 NOT USED -15V ——— B2
 GND ——— C2, T1



UNLESS OTHERWISE INDICATED:
 IC'S ARE DEC7420N
 PIN 7 ON EACH IC = GND
 PIN 14 ON EACH IC = +5V
 CAPACITORS ARE .01 MFD
 RESISTORS ARE 1/4W



TRANSISTOR & DIODE CONVERSION CHART				digital	TITLE			
DEC	EIA	DEC	EIA		6-4 INPUT NAND GATES MI17			
				EQUIPMENT CORPORATION <small>MAYNARD, MASSACHUSETTS</small>	SIZE	CODE	NUMBER	REV
					B	CS	MI17-0-1	A
					PRINTED CIRCUIT REV			
					A	B		