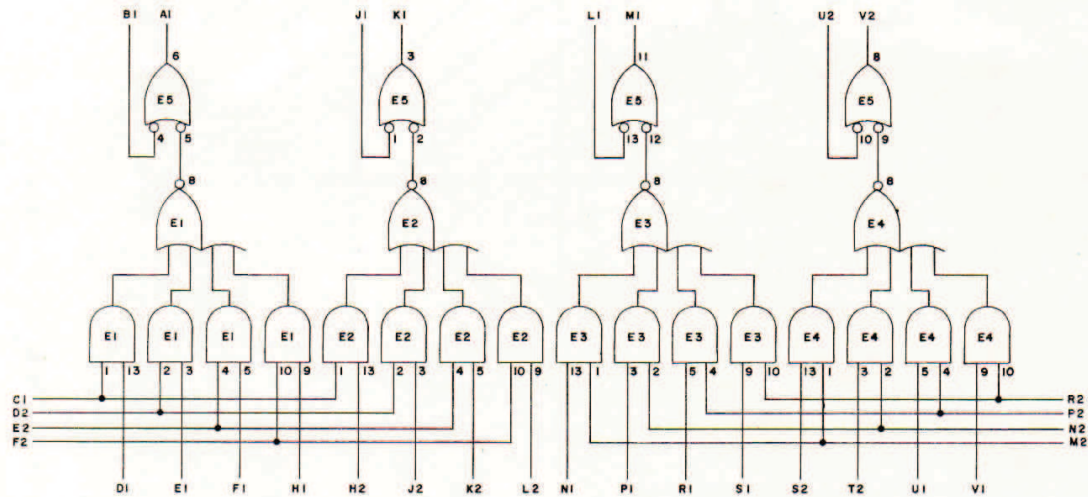
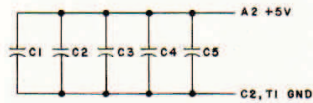


THIS SCHEMATIC IS FURNISHED ONLY FOR TEST AND MAINTENANCE PURPOSES. THE CIRCUITS ARE PROPRIETARY IN NATURE AND SHOULD BE TREATED ACCORDINGLY. COPYRIGHT 1967 BY DIGITAL EQUIPMENT CORPORATION



UNLESS OTHERWISE INDICATED:
 E1 THRU E4 ARE DEC7453N
 E5 IS DEC7400N
 PIN 7 ON EACH IC = GND
 PIN 14 ON EACH IC = +5V
 CAPACITORS ARE .01MFD



REV. NUMBER
 M169-D-1
 CS

| TRANSISTOR & DIODE CONVERSION CHART | | | |
|-------------------------------------|-----|-----|-----|
| DEC | EIA | DEC | EIA |
| | | | |
| | | | |
| | | | |

digital
 EQUIPMENT CORPORATION
 MAYFORD, MASSACHUSETTS

| TITLE | | NUMBER | | REV. |
|--------------------|------|----------------------|--|------|
| GATING MODULE M169 | | M169-0-1 | | |
| SIZE | CODE | PRINTED CIRCUIT REV. | | |
| C | CS | A | | |