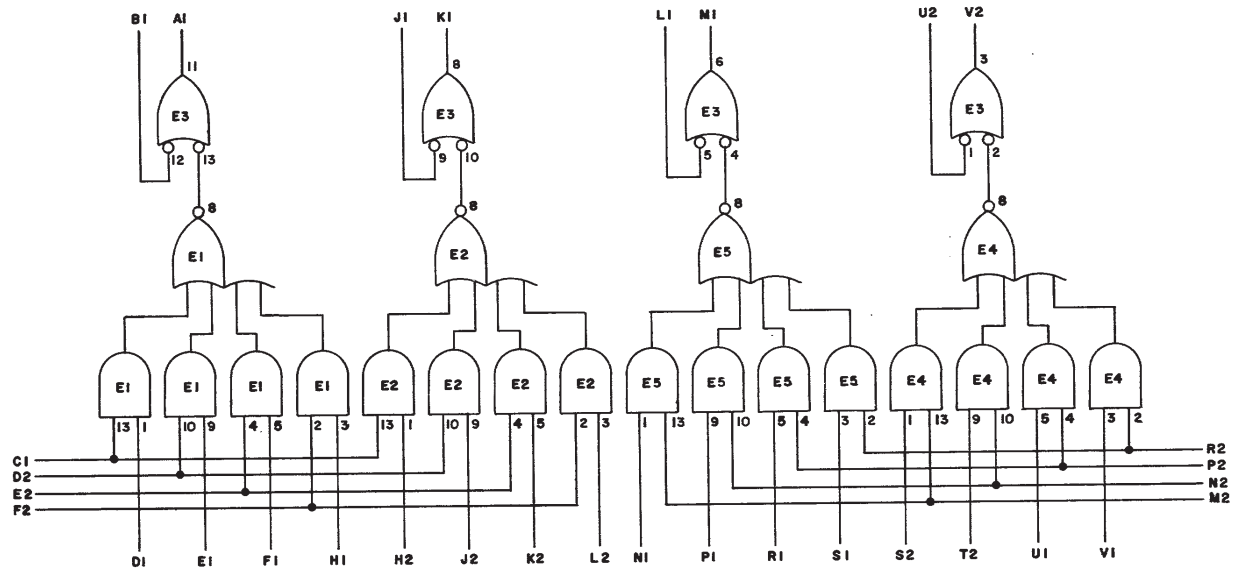
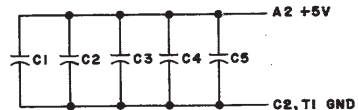


THIS SCHEMATIC IS FURNISHED ONLY FOR TEST AND MAINTENANCE PURPOSES. THE CIRCUITS ARE PROPRIETARY IN NATURE AND SHOULD BE TREATED ACCORDINGLY. COPYRIGHT 1967 BY DIGITAL EQUIPMENT CORPORATION



NOTES:
PIN 7 ON EACH IC = GND
PIN 14 ON EACH IC = +5V



E3	INTEGRATED CKT. DEC7400N	1905575
E1, E2, E4, E5	INTEGRATED CKT. DEC7453N	1905582
C1 THRU C5	CAP. .01MFD 100V 20% DISC	1001810
	PARTS LIST	A-PL-M169-O-O
REFERENCE DESIGNATION	DESCRIPTION	PART NO.

PARTS LIST		TITLE	
EQUIPMENT CORPORATION MAYNARD, MASSACHUSETTS		GATING MODULE M169	
SIZE	CODE	NUMBER	REV.
C	CS	M169-0-1	A
PRINTED CIRCUIT REV.			B

REVISIONS	CHK	CHG	NO.	REV.

DRN	DATE	TRANSISTOR & DIODE CONVERSION CHART			
<i>Dr. Muller</i>	11-8-67	DEC	EIA	DEC	EIA
CHK'D	DATE				
<i>R. Johnson</i>	11/9/67				
ENG.	DATE				
<i>R. Johnson</i>	11-9-67				
PROD.	DATE				
1					

REV. NUMBER
M169-0-1