

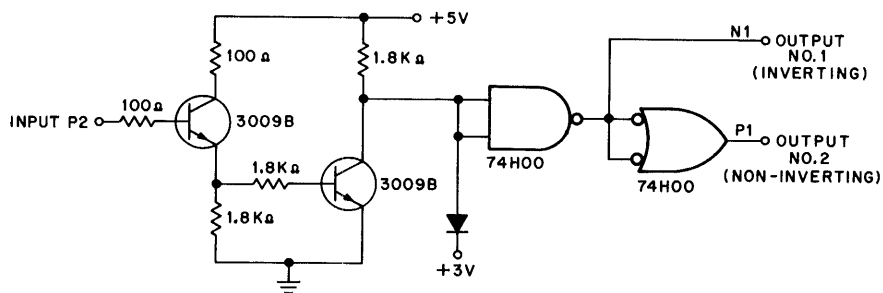
# M510 I/O Bus Receiver

The M510 module is an M-series single-height module containing eight PDP-15 I/O bus receivers. The receiver circuit consists of a two-stage emitter follower with two TTL output buffer gates to supply both inverted and noninverted outputs.

The following are the input, output, and power characteristics of the M510 module.

- INPUTS:** Input characteristics are:  
Minimum input impedance - 22.5 k $\Omega$   
Maximum current load to bus - 100  $\mu$ A  
Inputs are standard PDP-15 I/O Positive Bus levels.
- OUTPUTS:** Outputs are standard TTL positive logic levels with the following driving capability:  
Output No. 1 - 10 units  
Output No. 2 - 12 units
- DELAYS:** Input/Output No. 1 delay - 50 ns (maximum)  
Input/Output No. 2 delay - 60 ns (maximum)
- POWER:** The power dissipation of the M510 module is 900 mW (maximum).

The M510 module was designed to receive PDP-15 I/O bus signals for devices using positive logic. It provides a high input impedance that yields a switching threshold between the HIGH and LOW levels of the propagated signals. This feature reduces loading and noise problems. The M510 module is pin compatible with the M500 module.



15-0076

M510 Simplified Diagram