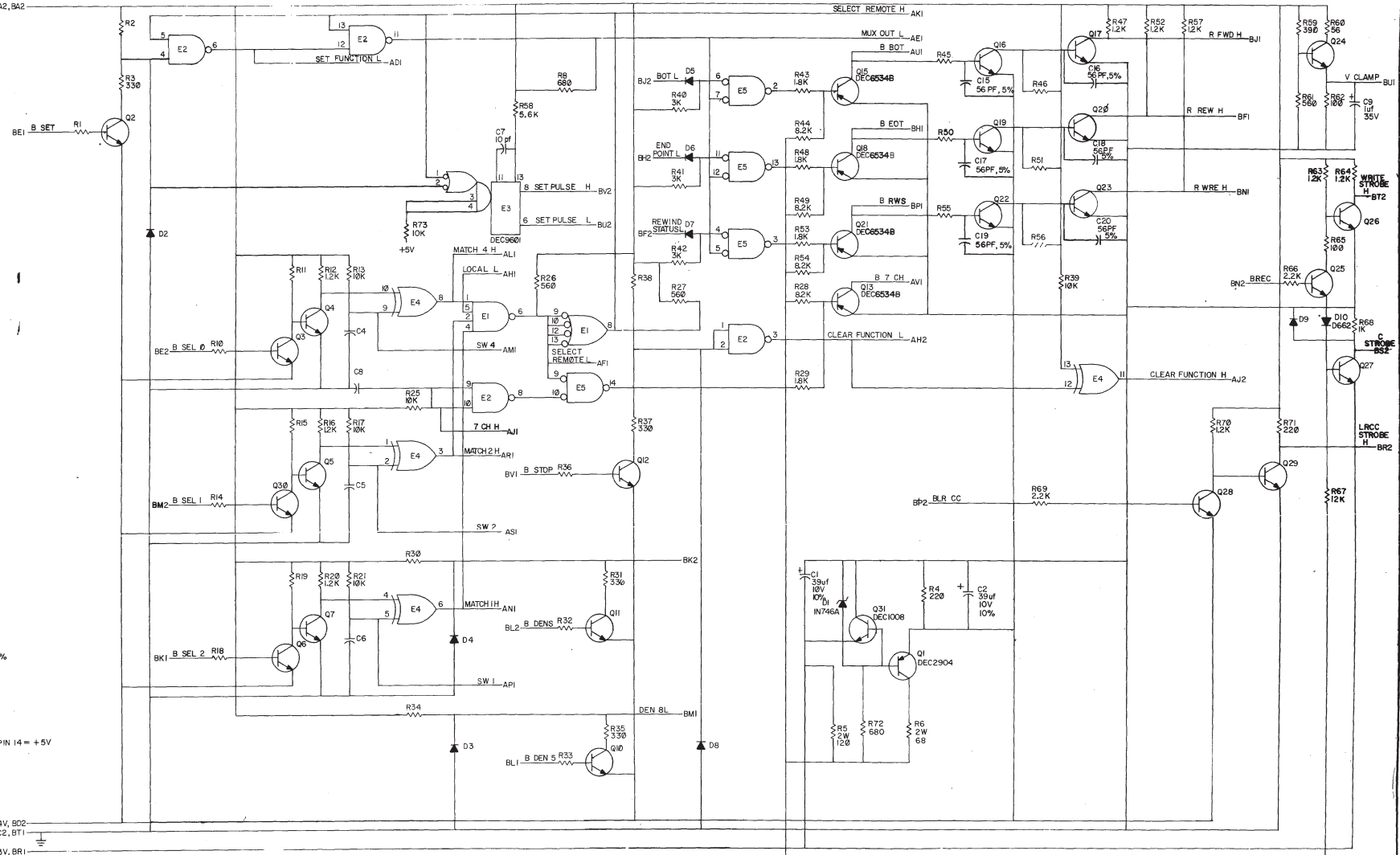


THIS SCHEMATIC IS FURNISHED ONLY FOR TEST AND MAINTENANCE PURPOSES. THE CIRCUITS ARE PROPRIETARY IN NATURE AND SHOULD BE TREATED ACCORDINGLY. COPYRIGHT 1970 BY DIGITAL EQUIPMENT CORPORATION

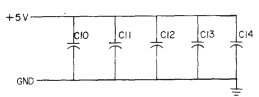
1-0-15W SO 10
A38 3888774 10001175

+5V, AA2, BA2



UNLESS OTHERWISE INDICATED:
RESISTORS ARE 2.7K, 1/4W, 5%
CAPACITORS ARE .01uF, 100V, 20%
TRANSISTORS ARE DEC30098
DIODES ARE 0083
E1 IS A DEC7400
E2 IS A DEC7400
E3 IS A DEC9601
E4 IS A DEC7486
E5 IS A DEC364
ON E5 PIN 1 = GND, PIN 8 = +5V
ON ALL OTHER IC'S PIN 7 = GND, PIN 14 = +5V

-2.4V, B02
GND, AC2, AT1, BC2, BT1
-3.3V, BR1
-15V, AB2, BB2



REV	DATE	BY	CHKD
1	8/17/70	IP	fr
2	2/22/71	IP	fr
3	11/17/71	IP	fr
4	1/24/72	IP	fr

REVISIONS		TRANSISTOR & DIODE CONVERSION CHART			
DATE	BY	TO	FROM	DATE	BY
8/17/70	IP	2N1132	2N1132		
2/22/71	IP	2N1132	2N1132		
11/17/71	IP	2N1132	2N1132		
1/24/72	IP	2N1132	2N1132		

digital EQUIPMENT CORPORATION
digital EQUIPMENT CORPORATION
 TITLE: BUS TRANSCEIVER M514
 SIZE: D CODE: M514-0-1
 NUMBER: REV: K
 PRINTED CIRCUIT REV: 4