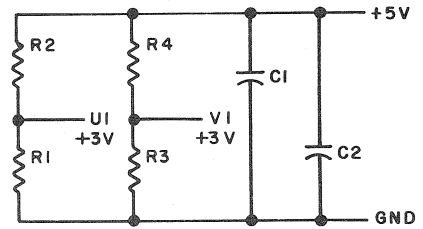
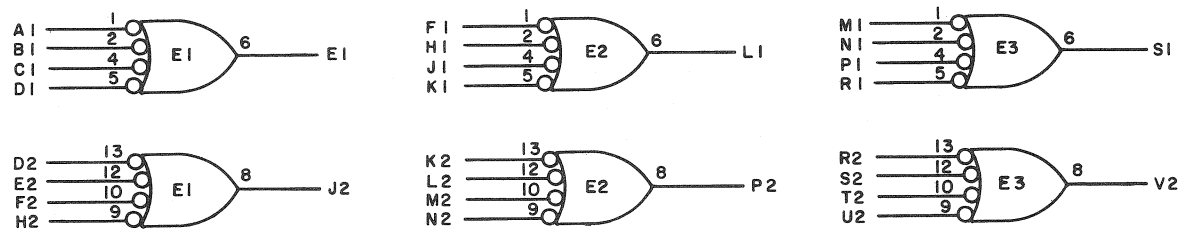


REV. B
 NUMBER M617-0-1
 CS B
 SIZE

THIS SCHEMATIC IS FURNISHED ONLY FOR TEST AND MAINTENANCE PURPOSES. THE CIRCUITS ARE PROPRIETARY IN NATURE AND SHOULD BE TREATED ACCORDINGLY. COPYRIGHT 1967 BY DIGITAL EQUIPMENT CORPORATION

+5V ——— A 2
 NOT USED -15V ——— B 2
 GND ——— C 2, T 1



NOTES:
 PIN 7 ON EACH IC = GND
 PIN 14 ON EACH IC = +5V
 USE THE ETCH BOARD OF THE M117

E1 THRU E3	INTEGRATED CKT, DEC7440N	1905579
R2 & R4	RES 330 1/4W 10% CC	1300293
R1 & R3	RES. 750 1/4W 5% CC	1301401
C1 & C2	CAP. .01MFD 50V -0+20% DISC	1000001
	PARTS LIST	A-PL-M617-0-0
REFERENCE DESIGNATION	DESCRIPTION	PART NO.

REVISIONS	CHK	CHG NO	REV
		6422	A
		6824	B

DRN	DATE
<i>M. Keller</i>	3-15-67
CHK'D	DATE
<i>[Signature]</i>	4-21-67
ENG	DATE
<i>[Signature]</i>	4-21-67
PROD.	DATE

TRANSISTOR & DIODE CONVERSION CHART			
DEC	EIA	DEC	EIA

digital
 EQUIPMENT CORPORATION
 MAYNARD, MASSACHUSETTS

TITLE				6-4 INPUT NOR BUFFERS M617			
SIZE	CODE	NUMBER		REV.			
B	CS	M617-0-1		B			
PRINTED CIRCUIT REV							C

DISC 329 / 339 / 353