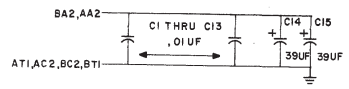
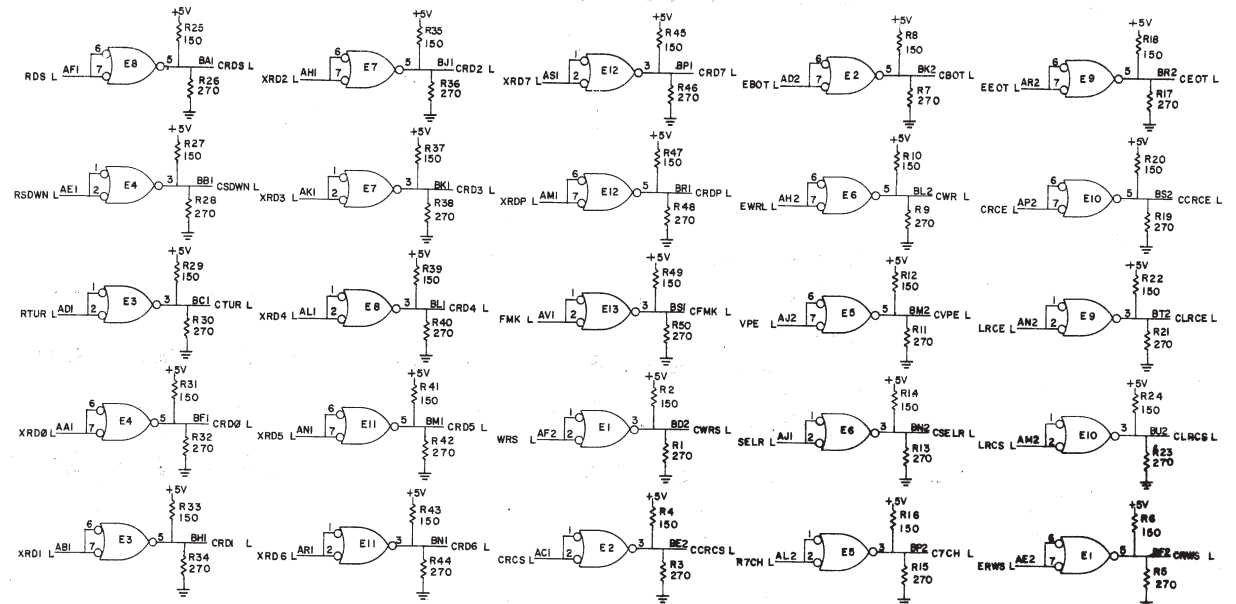
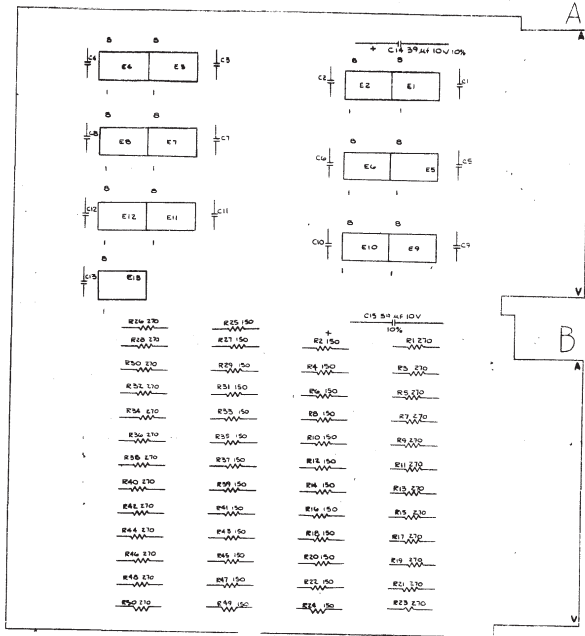


THIS SCHEMATIC IS FURNISHED ONLY FOR TEST AND MAINTENANCE PURPOSES. THE CIRCUITS ARE PROPRIETARY IN NATURE AND SHOULD BE TREATED ACCORDINGLY. COPYRIGHT 1971 BY DIGITAL EQUIPMENT CORPORATION.

1-0-096W 53 1 0 18001 JLS



PIN 8+ +5V
PIN 4+ GND ON ALL IC'S

QTY	REF DESIGNATION	DESCRIPTION	DEC PART NO.
		GRIPLET	1210244-0
13	R1 - R13	I.C. DEC 75451	1910406
4		EYEBLET #GSM-7	9006732
2		HANDLE, FLIP CHIP - MAGENTA	9008337-06
25	R1, 3, 5, 7, 9, 11, 13, 15, 17, 19, 21, 23	RES. 270 OHM 5%	1301972
25	R2, 4, 6, 8, 10, 12, 14, 16, 18, 20, 22, 24	RES. 150 OHM 5%	1300250
13	C1 - C13	CAP. .01UF 100V 20% DISC	1001010
2	C14, 15	CAP. .39UF 10V 10%	1000076
1		ETCHED CIRCUIT BOARD	5009575
		MODULE AND HOLEPUNCH	5-ME-M640-0-6
		ASSEMBLING HOLES LAYOUT	D-ME-M640-0-4
		X-Y COORDINATE HOLES LOCATION	K-CO-M640-0-4

REVISIONS	DATE	BY	DESCRIPTION
1	11/27/71	W. J. Mile	TRANSISTOR & DIODE CONVERSION CHART
2	12/22/71	W. J. Mile	REVISED TO REFLECT CHANGES
3	1/15/72	W. J. Mile	REVISED TO REFLECT CHANGES
4	1/15/72	W. J. Mile	REVISED TO REFLECT CHANGES
5	1/15/72	W. J. Mile	REVISED TO REFLECT CHANGES

TITLE	MASTER/INTERFACE BUS DRIVER
EQUIPMENT	DEC 75451
CORPORATION	DIGITAL EQUIPMENT CORPORATION
SIZE	100X
CODE	CS
NUMBER	M640-0-1
PRINTED CIRCUIT REV.	C

DEC FORM NO. 085 118

REV. 10/71
D
CS
M640-0-1

015-324-134-108