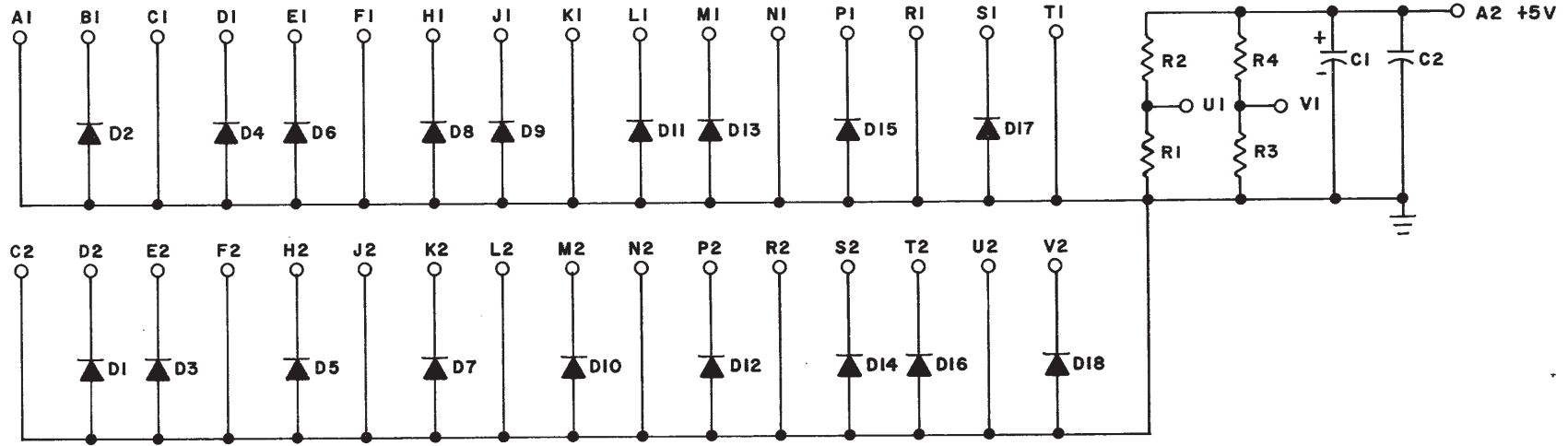


THIS SCHEMATIC IS FURNISHED ONLY FOR TEST AND MAINTENANCE PURPOSES. THE CIRCUITS ARE PROPRIETARY IN NATURE AND SHOULD BE TREATED ACCORDINGLY. COPYRIGHT 1968 BY DIGITAL EQUIPMENT CORPORATION



A B C D E F G H I J K L M N P Q R S T U V W X Y Z

D1-D18	DIODE D664	1100114
R2, R4	RES. 330 1/4W 5% CC	1300295
R1, R3	RES. 750 1/4W 5% CC	1301401
C1	CAP. 6.8MFD 35V 20% S.TANT	1000067
C2	CAP. .01MFD 100V 20% DISC	1001610
	PARTS LIST	A-PL-M907-0-0
REFERENCE DESIGNATION	DESCRIPTION	PART NO.
	PARTS LIST	

REVISIONS	CHK CHG NO. REV.

DRN.	DATE
<i>m. Keller</i>	8-9-68
CHK'D	DATE
<i>W. J. Fuller</i>	8-9-68
ENG.	DATE
<i>F. J. O'Connell</i>	2/11/68
PROD.	DATE

TRANSISTOR & DIODE CONVERSION CHART			
DEC	EIA	DEC	EIA
D664	IN3606		



TITLE			
DIODE CLAMP M907			
SIZE	CODE	NUMBER	REV.
B	CS	M907-0-1	
PRINTED CIRCUIT REV.			