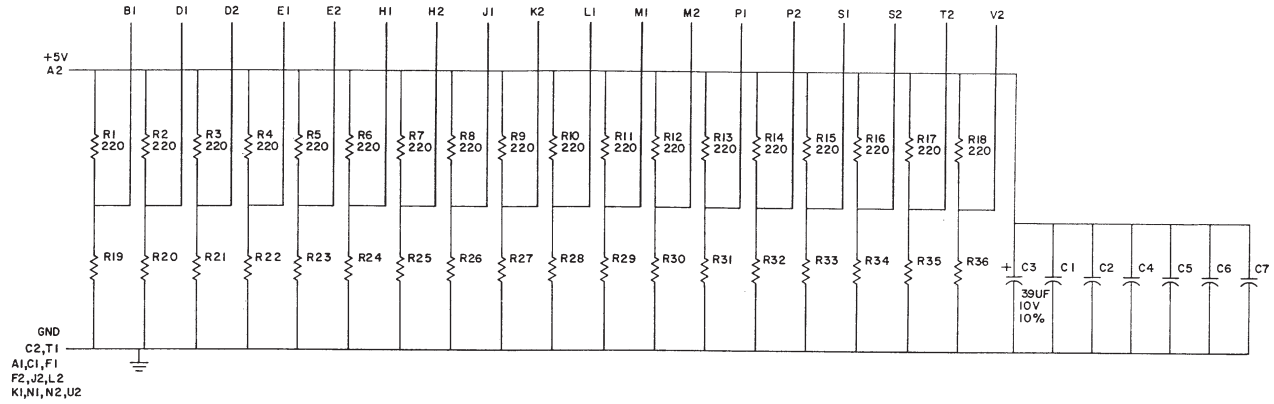
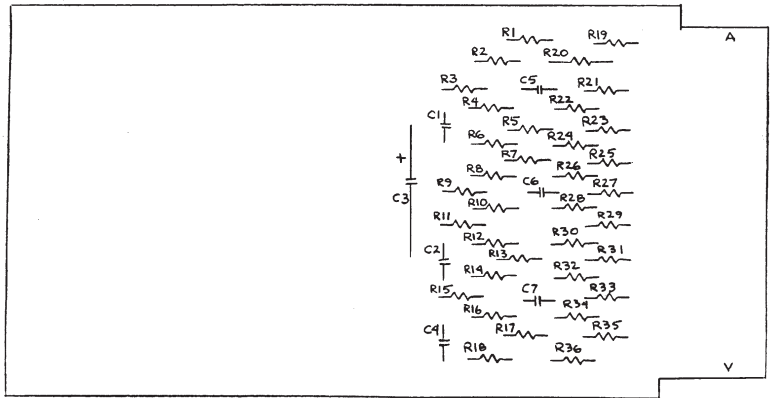


THIS SCHEMATIC IS FURNISHED ONLY FOR TEST AND MAINTENANCE PURPOSES. THE CIRCUITS ARE PROPRIETARY IN NATURE AND SHOULD BE TREATED ACCORDINGLY. COPYRIGHT 1970 BY DIGITAL EQUIPMENT CORPORATION



UNLESS OTHERWISE INDICATED:  
RESISTORS ARE 330, 1/4W, 5%  
CAPACITORS ARE .047 UF, 16V, 50-20%



ITEM NO.	DEC PART NO.	DESCRIPTION	QTY.
10	9008337-06	HANDLE, FLIP CHIP - MAGNETA	1
9	9006732	EYELET #GS 4-7	2
8	1300295	RES. 330, 1/4W, 5%	18
7	1300271	RES. 220, 1/4W, 5%	18
6	1009678	CAP. .047UF, 16V, 50-20%	6
5	1000076	CAP. 39UF, 10V, 10% S. TANT	1
4	5009285	ETCHED CIRCUIT BOARD	1
3	B-MI-M956-0-6	MODULE ECO HISTORY	
2	C-AH-M956-0-5	ASSY/DRILLING HOLE LAYOUT	
1	K-CO-M956-0-4	X-Y COORDINATE HOLE LOCATION	

PARTS LIST

REV.	NO.	REV.

CHK'D BY	DATE	CHK'D BY	DATE
A. Cooper	12/4/71	J. Hill	1-12-71
P. Sullivan	1-12-71		

TRANSISTOR & DIODE CONVERSION CHART			
DEC	EIA	DEC	EIA

**digital** EQUIPMENT CORPORATION  
MAYNARD, MASSACHUSETTS

TITLE: 18 TERMINATORS M956

SIZE CODE: C CS  
NUMBER: M956-0-1  
REV: A

PRINTED CIRCUIT REV: B

REV. A  
NUMBER  
M956-0-1  
SIZE CODE  
C CS