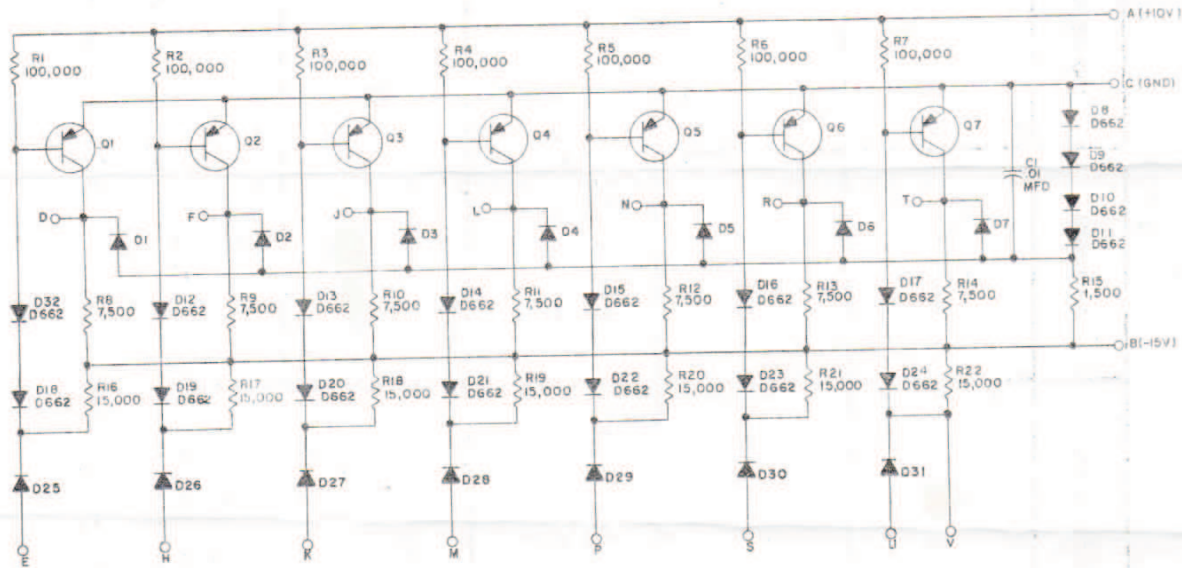


RS-B-R107



UNLESS OTHERWISE INDICATED;
 RESISTORS ARE 1/4W, 5%
 DIODES ARE D-664
 TRANSISTORS ARE DEC 2894-1

TRANSISTOR & DIODE CONVERSION CHART			
DEC	EIA	DEC	EIA
DEC 2894-1	DEC 2894-1		
D-662	1N645		
D-664	1N3606		

NOTES

THIS SCHEMATIC IS FURNISHED ONLY FOR TEST AND MAINTENANCE PURPOSES. THE CIRCUITS ARE PROPRIETARY IN NATURE AND SHOULD BE TREATED ACCORDINGLY

COPYRIGHT 1964 BY DIGITAL EQUIPMENT CORPORATION

A		RS-B-R107	
INVERTER R107			

DIGITAL EQUIPMENT CORPORATION • MAYNARD, MASSACHUSETTS