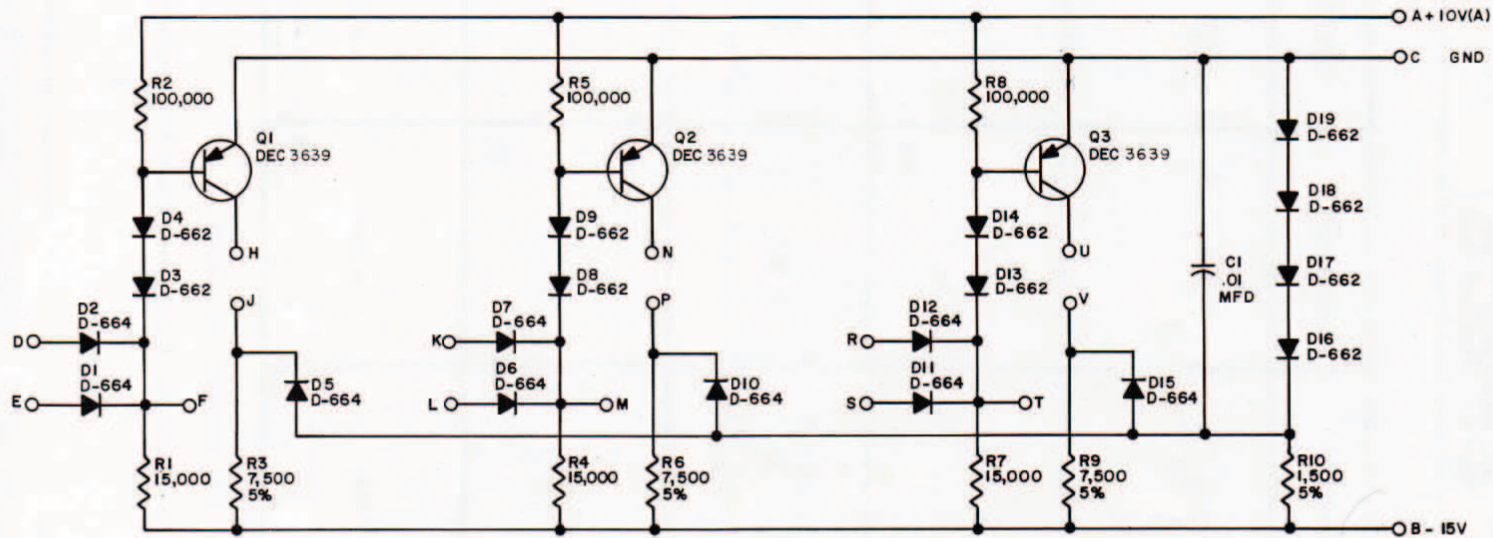


RS-B-R111-2



UNLESS OTHERWISE INDICATED:
RESISTORS ARE 1/4W; 10%

TRANSISTOR & DIODE CONVERSION CHART			
DEC	EIA	DEC	EIA
DEC 3639	2N3639		
D-662	1N645		
D-664	1N3605		

NOTES

THIS SCHEMATIC IS FURNISHED ONLY FOR TEST AND MAINTENANCE PURPOSES. THE CIRCUITS ARE PROPRIETARY IN NATURE AND SHOULD BE TREATED ACCORDINGLY.

COPYRIGHT 1964 BY DIGITAL EQUIPMENT CORPORATION

< R B U C D E F G H I J K L M N O P Q R S T U V W X Y Z >		
D	RS-B-R111	2
DIODE GATE R111		