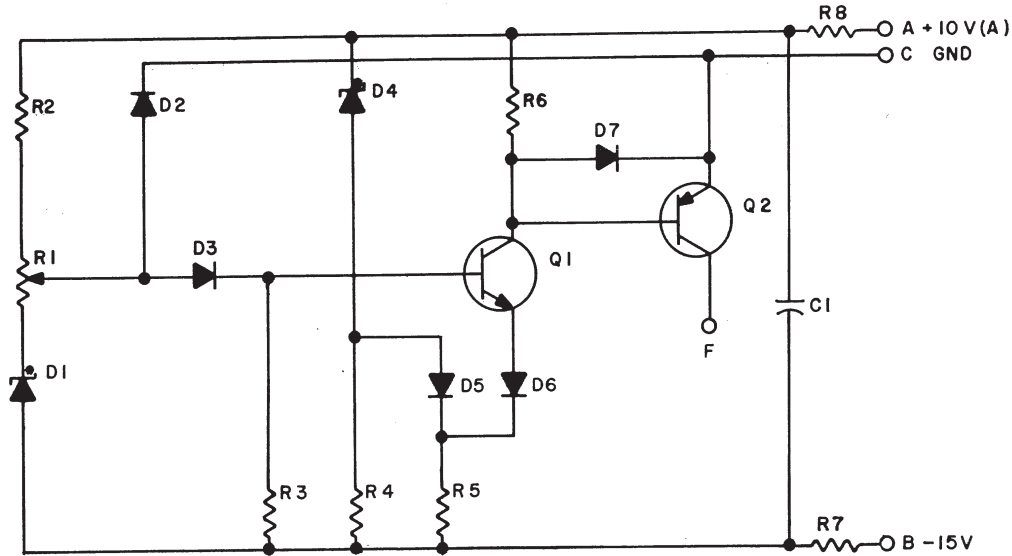


THIS SCHEMATIC IS FURNISHED ONLY FOR TEST AND MAINTENANCE PURPOSES. THE CIRCUITS ARE PROPRIETARY IN NATURE AND SHOULD BE TREATED ACCORDINGLY. COPYRIGHT 1965 BY DIGITAL EQUIPMENT CORPORATION



Q2	TRANSISTOR DEC2894-3B-S	1503099
Q1	TRANSISTOR DEC3009B	1503100
R7, R8	RES. 100 1/4W 5% CC	1300229
R6	RES. 3K 1/4W 5% CC	1300432
R5	RES. 1K 1/4W 5% CC	1300365
R4	RES. 6.8K 1/4W 10% CC	1300463
R3	RES. 68K 1/4W 10% CC	1300526
R2	RES. 3.9K 1/4W 5% CC	1300444
R1	RES. 5K PRINTED CKT. POT	1305451
D4	DIODE IN964A	1100127
D1	DIODE 1/4M 6.8 AZ5	1100102
D2, D3, D5, D6, D7	DIODE D664	1100114
C1	CAP. 0.1MFD 50V 20% D.CER.	1000030
PARTS LIST		A-PL-W505-0-0
REFERENCE DESIGNATION	DESCRIPTION	PART NO.
PARTS LIST		

* 13V 10%

REVISIONS	
CHK/CHG NO.	REV.
REV. & REDR	
6571	A
6993	B

DRN.	I. HAHN	DATE	3-1-65
CHK'D	N. PERRYMAN	DATE	3-3-65
ENG.	N. BOISSE	DATE	3-3-65
PROD.		DATE	

TRANSISTOR & DIODE CONVERSION CHART			
DEC		EIA	
D664		IN3606	
IN964A	*	SAME	
1/4M 6.8 AZ5		IN4099	
DEC2894-3B		SAME	
DEC3009B		2N3009	

digital
EQUIPMENT CORPORATION
MAYNARD, MASSACHUSETTS

TITLE			
LOW VOLTAGE DETECTOR W505			
SIZE	CODE	NUMBER	REV.
B	CS	W505-0-1	B
PRINTED CIRCUIT REV.			
			B