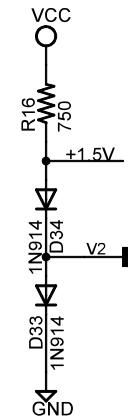
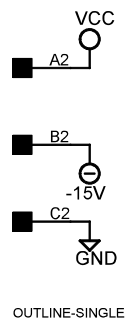
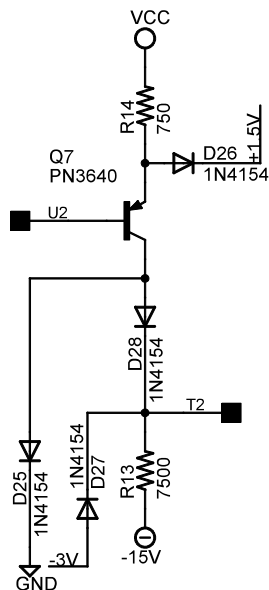
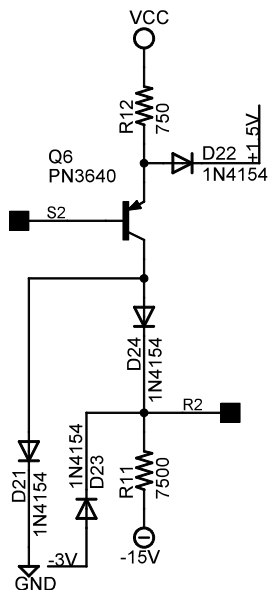
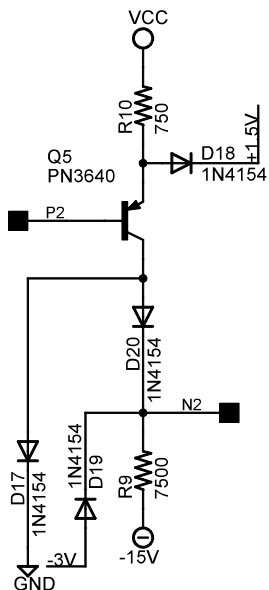


R15 is 1500 ohms when -3V Strate is used.



Unless indicated otherwise:
Resistors are 1/4W, 5%



| | |
|-----------------------------------|------------|
| Positive Level Converter W512 | |
| TITLE: W512X | |
| Document Number: B-CS-W512-0-1 | REV: B |
| Date: 2/08/2013 10:29:52a | Sheet: 1/1 |