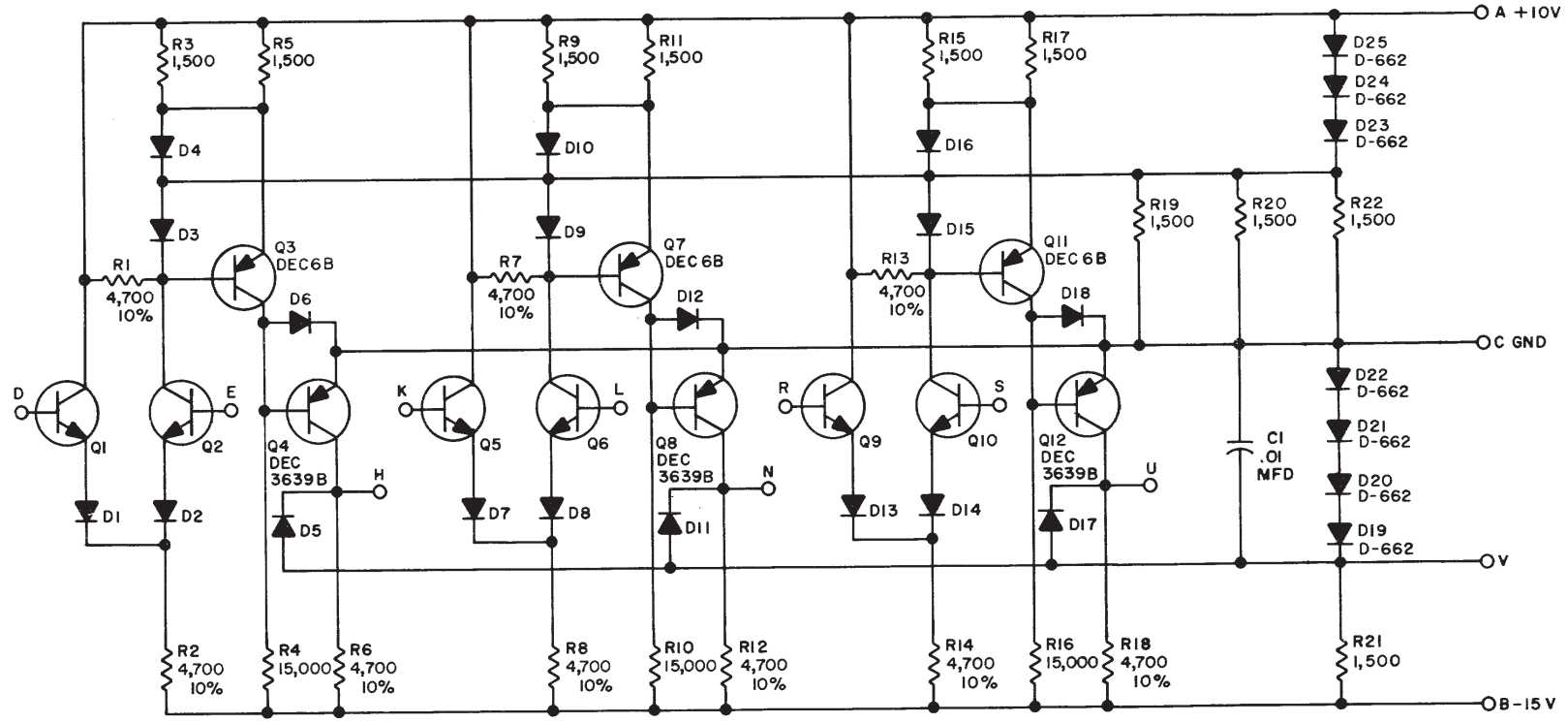


REV. C
 NUMBER W520-0-1
 SIZE B
 CS

THIS SCHEMATIC IS FURNISHED ONLY FOR TEST AND MAINTENANCE PURPOSES. THE CIRCUITS ARE PROPRIETARY IN NATURE AND SHOULD BE TREATED ACCORDINGLY. COPYRIGHT 1965 BY DIGITAL EQUIPMENT CORPORATION



UNLESS OTHERWISE INDICATED:
 RESISTORS ARE 1/4W; 5%
 DIODES ARE D-664
 TRANSISTORS ARE DEC 3009B

 <----->

PARTS LIST A-PL-W520-0-0

REVISIONS CHK CHG NO REV DAW 5136 I REV IS REDR. 5407 B 7006 C	DRN.	A. OUELLETTE	DATE	11-24-65	TRANSISTOR & DIODE CONVERSION CHART				digital EQUIPMENT CORPORATION MAYNARD, MASSACHUSETTS	TITLE			COMPARATOR W520
	CHK'D	N. PERRYMAN	DATE	11-29-65	DEC	EIA	DEC	EIA		SIZE	CODE	NUMBER	REV.
	ENG.	D.A. WHITE	DATE	11-30-65	DEC3009B	2N3009				B	CS	W520-0-1	C
	PROD.		DATE		DEC3639B	2N3639							
					D662	1N645			PRINTED CIRCUIT REV				
					D664	1N3606			B				

DEC FORM NO. DRB 102

DIST. 324 434 435 PINK