

CUSTOMER PRINT SET INDEX

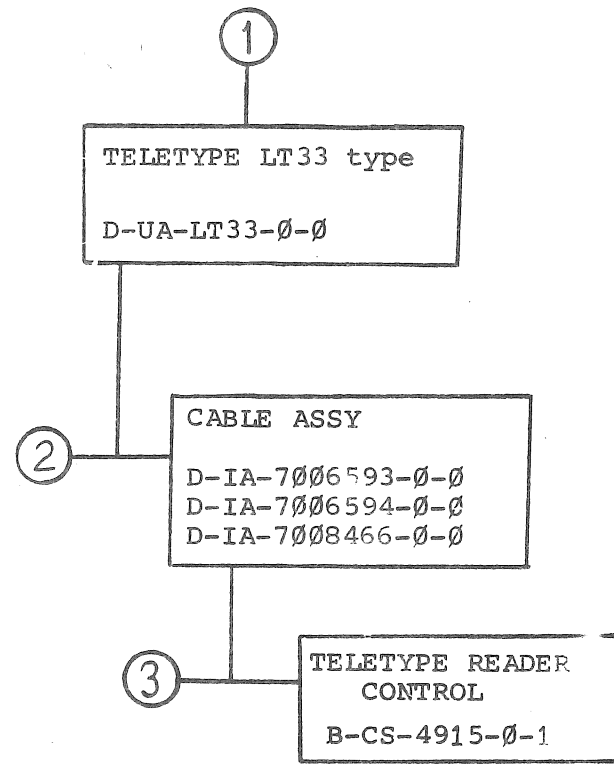
THIS IS PRINT SET

SEQUENCE		SEQUENCE
DRAWING DIRECTORY LT33 Series	B-DD-LT33-0	
SETUP & REWORK PROC. FOR 3300 SERIES TTY WRITERS (PL)	C-PL-LT33-0-0	
SETUP & REWORK PROC. FOR 3300 SERIES TTY WRITERS	D-UA-LT33-0-0	
ACCESSORY LIST LT33 Series	A-AL-LT33-0-12	
RECOMMENDED SPARE PARTS	A-PL-LT33-SB-0	
MAINTENANCE TOOL KIT	A-PL-LT33-ST-0	
PACKING PROCEDURE	A-SP-LT33-0-10	
INSTALLATION PROCEDURE	A-SP-LT33-0-11	
TELETYPE INSPECTION PROC. & ADJ.	A-SP-LT33-0-13	
TELETYPE READER CONTROL	B-CS-4915-0-1	
READER CONTROL CIRCUITS	D-BS-LT33-B-CONT	
PDP10 TELETYPE MODEL 33KSR	D-IC-LT33A-0-1	

UNIT VARIATIONS		PRINT SET	
VAR	TITLE		
LT33-AA	KSR 115 V 60 Hz 4-PIN PLUG	X	
-AB	KSR 240 V 50 Hz 4-PIN PLUG	X	
-BC	ASR 115 V 60 Hz 4-PIN X-ON	X	
-BD	ASR 240 V 50 Hz 4-PIN X-ON	X	
-CC	KSR 115 V 60 Hz MATE-N-LOK PLUG	X	
-CD	KSR 240 V 50 Hz MATE-N-LOK PLUG	X	
-CE	KSR 100 V 50 Hz MATE-N-LOK PLUG	X	
-DC	ASR 115 V 60 Hz MATE READER RUN	X	
-DD	ASR 240 V 50 Hz MATE READER RUN	X	
-DE	ASR 100 V 50 Hz MATE READER RUN	X	
-EA	ASR 115 V 60 Hz MATE MAN READER	X	
-EB	ASR 240 V 50 Hz MATE MAN READER	X	
-HC	ASR 115 V 60 Hz MATE X-ON	X	
-HD	ASR 240 V 50 Hz MATE X-ON	X	
-RA	ASR 115 V 60 Hz BURNDY READER RUN	X	
-RB	ASR 240 V 50 Hz BURNDY READER RUN	X	
-SB	SPARE PARTS KIT, ASR	X	
-ST	TOOL KIT	X	
-MA	MOD KIT ASR W076 READER RUN	X	
-MB	MOD KIT ASR MATE READER RUN	X	
-MC	MOD KIT KSR W076	X	
-MD	MOD KIT KSR MATE-N-LOK PLUG	X	

DEC 16 (3251-1062-1A-R) 72

REVISIONS			USED ON OPTION/MODEL	DRN.	DATE	TITLE			
DATE	CHG. NO.	REV	SEE "VAR" ABOVE	ArKENT	21 AUG 73	TELETYPEWRITERS			
8/73	REVIS	J		CHK'D.	DATE	LT33			
	REDRAWN			<i>Allen Kent</i>	21 Aug 73				
	LT33-8			PROJ ENG.	DATE				
	LT33-9	K		<i>Allen Kent</i>	21 Aug 73				
	LT33-9			PROD.	DATE	SIZE	CODE	NUMBER	REV
	19 Feb 74			<i>Allen Kent</i>	5-2-75	B	DD	LT33 - 0	K
	<i>Allen Kent</i>			FIELD SERV.	DATE				
				<i>Walter MacKenzie</i>	8-22-73				
			SHEET 1 OF 3						



TITLE	SIZE CODE	NUMBER	REV
TELETYPEWRITERS LT33	B DD	LT33 - 0	K
SHEET 2 OF 3			

ELECTRICAL						MECHANICAL											
CUSTOMER PRINT SET		MFG SET FIND NO.	DRAWING NO.	REV	NO OF SHT	DESCRIPTION	OPTION NO./FILE DATE	CUSTOMER PRINT SET		MFG SET FIND NO.	DRAWING NO.	REV	NO OF SHT	DESCRIPTION	OPTION NO./FILE DATE		
X		1	C-PL-LT33-0-0	A	3	SETUP & REWORK PROC. FOR 3300				1	D-UA-LT33-0-0	A	8	SETUP & REWORK PROC. FOR 3300			
X			D-UA-LT33-0-0	A	8	SETUP & REWORK PROC. FOR 3300					C-PL-LT33-0-0	A	3	SETUP & REWORK PROC. FOR 3300			
X			A-AL-LT33-0-12	C	1	ACCESSORY LIST LT33 SERIES					A-DC-7409045-0-2		1	DECAL VOLATAGE SPEC			
X			A-PL-LT33-SB-0	*	1	RECOMMENDED SPARE PARTS											
X			A-PL-LT33-ST-0	A	2	MAINTENANCE TOOL KIT LT33											
X			A-SP-LT33-0-10	B	1	PACKING PROCEDURE				2	D-IA-7006593-0-0	#		4915 TO MATE-N-LOK ASSY			
X			A-SP-LT33-0-11	B	1	INSTALLATION PROCEDURE					D-IA-7006594-0-0	#		TTY TO MATE-N-LOK ASSY 4 COND			
X			A-SP-LT33-0-13	A	7	INSPECTION PROCEDURES & ADJUST.					D-IA-7008466-0-0	#		4915 TO BURNDY CABLE ASSY			
			A-PS-3011294-0-0		2	PURCHASE SPEC. 3300 TELETYPES											
THE FOLLOWING CABLE IS USED ON THE OBSOLETE LT33-DA and -DB.																	
X		3	B-CS-4915-0-1	#	1	TELETYPE READER CONTROL					D-AD-7005676-0-0	#		4915 TO W076 CABLE ASSY			
X			D-BS-LT33-B-CONT	B	1	READER CONTROL CIRCUITS											
X			D-IC-LT33A-0-1	A	1	PDP10 TELETYPE MODEL 33KSR											
THE FOLLOWING SPECIFICATION IS TO BE SUPPLIED UPON CUSTOMER REQUEST:																	
			A-SP-LT33-0-14	*	44	LT33 TYPE PROGRAMMING SPEC.											
THE FOLLOWING DRAWINGS ARE "INACTIVE" AND ARE LISTED HERE FOR HISTORIC REFERENCE. THE DRAWINGS LISTED ABOVE REPLACE THESE DRAWINGS.																	
			D-IA-7505038-0-0	D	2	TELETYPE MODIFICATIONS (LT33)											
			D-IA-7505039-0-0	D	1	TELETYPE MODIFICATIONS (50Hz&240V)											
			D-IA-7505041-0-0	B	1	TELETYPE MODIFICATIONS (33KSR)											
			D-UA-LT33A-0-0	A	1	PDP10 TELETYPE 33KSR											
			A-PL-LT33A-0-0	A	1	PDP10 TELETYPE E 33KSR (PL)											
			D-UA-LT33-B-0	B	1	DEC MODIFIED TELETYPE 33ASR											
			A-PL-LT33-B-0	B	1	DEC MODIFIED TELETYPE 33ASR (PL)											
CUSTOMER PRINT SET CODES		X = PRINT OF DOCUMENT INCLUDED IN PRINT SET C = INCLUDES ALL PRINTS INDICATED ON DOCUMENT S = CONFIDENTIAL AUTHORIZED SIGNATURE REQUIRED															
TITLE								TELETYPEWRITERS LT33			SHEET 3 OF 3		SIZE/CODE B DD		NUMBER LT33 - 0		REV K

This drawing and specifications herein are the property of Digital Equipment Corporation and shall not be reproduced or copied or used in whole or in part as the basis for the manufacture or sale of items without written permission. COPY RIGHT © 1973

FEATURES	-AA		-AB		-BA**		-BB**		-BC		-BD		-CA (OBS)		-CB (OBS)		-CC		-CD		-CE		-DA (OBS)		-DE (OBS)		-DC		-DD		-DE		-EA †		-EB †		-FA (OBS)		-FB (OBS)		-HA**		-HB**		-HC		-HD		-PA		-PB	
	1	2	1	2	1	2	1	2	1	2	1	2	1	2	1	2	1	2	1	2	1	2	1	2	1	2	1	2	1	2	1	2	1	2	1	2	1	2	1	2	1	2	1	2	1	2						
LINE VOLTAGE	1=115V 60HZ 2=230V 50HZ 0=100V 50HZ																																																			
INTERFACE CONNECTOR	4=WECO 283B, W=W76, M=MATE-N-LOCK, B=BUNDY																																																			
KEYBOARD (UPPERCASE)	E=EVEN PARITY N=NO PARITY (8TH BIT MARKING)																																																			
PRINTER	F=FRICITION FEED S=SPROCKET FEED																																																			
PAPER TAPE RDR/PUNCH	0=NONE, R=RDR RUN MOD, A=AUTO, M=MANUAL																																																			
ANSWERBACK	0=NONE, D=DISABLED, A=ANSWERBACK																																																			
1 A-PS-3011294-01	TELETYPE CAT. NO. 3310/3EA KSR 60 HZ																																																			
1 A-PS-3011294-02	TELETYPE CAT. NO. 3310/3SA KSR 50 HZ																																																			
1 A-PS-3011294-03	TELETYPE CAT. NO. 3321/3JA MAN ASR 60 HZ																																																			
1 A-PS-3011294-04	TELETYPE CAT. NO. 3321/3WD MAN ASR 50 HZ																																																			
1 A-PS-3011294-05	TELETYPE CAT. NO. 3320/3JA MAN ASR 60 HZ																																																			
1 A-PS-3011294-06	TELETYPE CAT. NO. 3320/3WA MAN ASR 50 HZ																																																			
1 A-PS-3011294-07	TELETYPE CAT. NO. 3320/5JA AUTO ASR 60 HZ																																																			
1 A-PS-3011294-08	TELETYPE CAT. NO. 3320/5WA AUTO ASR 50 HZ																																																			
1A 1211394	"TD" TYPEWHEEL TELETYPE P.N. 185508																																																			
2 A-PS-1205693	CORD 4 COND																																																			
3 A-PS-1205857-01	TELEPHONE PLUG 283B-50																																																			
4 A-PS-1205857-02	TELEPHONE JACK 404B-50																																																			
5 D-IA-7006593-1-0	4915 TO MATE-N-LOCK ASSY (12 FT) 6 COND																																																			
5 D-IA-7008466-12-0	4915 TO BURNDY CABLE ASSY (12 FT)																																																			
5 D-IA-7006594-1-0	TTY TO MATE-N-LOCK ASSY (12 FT) 4 COND																																																			
6 2911459	PIN TELETYPE 102644																																																			
7 9007929	SOLDERLESS TERM #6 RING 18-22 AWG																																																			
8 1100106	THYRECTOR G.E. 6RS20SP4B4																																																			
9 1000063	CAPACITOR 1UF + 10% 150V																																																			
10 9006020-1	SCREW PH. HD PAN 6-32 x 1/4																																																			
11 9007032	CABLE TIE 3/16 x 6-1/2 LG SST2-M																																																			
12 9007031	CABLE TIE 3/32 x 3-3/4 LG SST1-M																																																			
13 A-PS-1609313	AUTOTRANSFORMER 3 AMP																																																			
14 9006037-1	SCREW PH. HD. PAN 8-32 x 3/8																																																			
15 9006690	LOCK WASHER #8																																																			
16 9006661	FLAT WASHER #8																																																			
17 9006561	HEX NUT 8-32 x 5/16 x 1/8																																																			
18 9107673-12	CORD SET 12 FT																																																			
19 9007928	SOLDERLESS TERM #10 RING 14-16 AWG																																																			
20 9008853	CAP 230V NEMA 6-15P																																																			
20 A-PS-1210561	CAP HUBBELL #7594 (115V)																																																			
20 A-PS-1210564	CAP HUBBELL #7485 (230V)																																																			

† NO KNOWN USAGE
 ** WILL BECOME OBSOLETE WHEN PRESENT STOCK IS EXHAUSTED (SPROCKET FEED)
 *** SEE NOTE 2

REV.	1	2	3	4
CHANGE NO.	LT33-0008	LT33-0009	LT33-0010	LT33-0011
ORIGINATED	A	A	A	A
CHK				
DATE	1-29-74	1-29-74	1-29-74	1-29-74
BY	A. KENT	A. KENT	A. KENT	A. KENT

FIRST USED ON OPTION/MODEL

UNLESS OTHERWISE SPECIFIED
 DIMENSION IN INCHES
 TOLERANCES
 DECIMALS FRACTIONS ANGLES
 ±.005 ± 1/64 ± 0°30'

FINAL SURFACE QUALITY
 REMOVE BURRS AND BREAK SHARP CORNERS

MATERIAL
 + + +

FINISH
 + + +

DRN. S. Charter
 DATE 4-20-73
 CHKD. J. P. Poy
 DATE 5/22/73
 ENG. Allen Kent
 DATE 9/16/73
 PROJ. ENG. Allen Kent
 DATE 2/28/73
 PROB. Allen Kent
 DATE 8-21-73

DATE 4-20-73
 DATE 5/22/73
 DATE 9/16/73
 DATE 2/28/73
 DATE 8-21-73

UNLESS OTHERWISE SPECIFIED
 DIMENSION IN INCHES
 TOLERANCES
 DECIMALS FRACTIONS ANGLES
 ±.005 ± 1/64 ± 0°30'

FINAL SURFACE QUALITY
 REMOVE BURRS AND BREAK SHARP CORNERS

MATERIAL
 + + +

FINISH
 + + +

DRN. S. Charter
 DATE 4-20-73
 CHKD. J. P. Poy
 DATE 5/22/73
 ENG. Allen Kent
 DATE 9/16/73
 PROJ. ENG. Allen Kent
 DATE 2/28/73
 PROB. Allen Kent
 DATE 8-21-73

DATE 4-20-73
 DATE 5/22/73
 DATE 9/16/73
 DATE 2/28/73
 DATE 8-21-73

digital EQUIPMENT CORPORATION
 MAYNARD, MASSACHUSETTS

TITLE SET UP & REWORK
 PROCEDURE FOR
 TTY3300 SERIES
 TTY WRITERS

SIZE CODE C/PL
 NUMBER LT33-0-0
 REV. A

SCALE + + +
 SHEET 1 OF 3

This drawing and specifications, herein, are the property of Digital Equipment Corporation and shall not be reproduced or copied or used in whole or in part as the basis for the manufacture or sale of items without written permission. COPYRIGHT © 1973

ITEM	DWG/PART NO.	DESCRIPTION	-AA	-AB	-BA**	-BB**	-BC	-BD	-CA (OBS)	-CB (OBS)	-CC	-CD	-CE	-DA (OBS)	-DB (OBS)	-DC	-DD	-DE	-EA	-EB	-FA (OBS)	-FB (OBS)	-HA**	-HB**	-HC	-HD	-RA	-RB
21	1210563	RUBBER CAP COVER HUBBELL 7440	-	-	-	-	-	-	-	-	-	-	-	-	-	-	-	-	-	-	-	-	-	-	-	-	-	-
22	A-DC-7409045-0-2	DECAL VOLTAGE SPEC	-	1	-	-	1	-	-	-	1	1	-	-	-	1	1	1	-	1	-	-	-	-	-	1	1	-
23	1211375	FUNCTION LEVER STOP CLIP (SHORT) 186781	-	-	-	-	-	-	-	-	-	-	-	-	-	1	1	1	-	-	-	-	-	-	-	1	1	-
24	9107278-02	TUBING RED #18 TEF	A/R	A/R	A/R	A/R	A/R	A/R	A/R	A/R	A/R	A/R	A/R	A/R	A/R	A/R	A/R	A/R	A/R	A/R	A/R	A/R	A/R	A/R	A/R	A/R	A/R	A/R
30	1204789	MOTOR 50 HZ TELETYPE 182267	-	1	-	-	1	-	-	-	1	1	-	-	-	1	1	-	-	-	-	-	-	-	-	1	1	-
31	1204850	DRIVE GEAR 50 HZ TELETYPE 181855	-	1	-	-	1	-	-	-	1	1	-	-	-	1	1	-	-	-	-	-	-	-	-	1	1	-
32	1204849	PINION GEAR 50 HZ TELETYPE 181851	-	1	-	-	1	-	-	-	1	1	-	-	-	1	1	-	-	-	-	-	-	-	-	1	1	-
33	1204848	PLATE W/STUD TELETYPE 181850	-	A/R	-	-	A/R	-	-	-	A/R	A/R	-	-	-	A/R	A/R	-	-	-	-	-	-	-	-	A/R	A/R	-
34	2911553	AIR DEFLECTOR TELETYPE 182183	-	1	-	-	1	-	-	-	1	1	-	-	-	1	1	-	-	-	-	-	-	-	-	1	1	-
35	2911554	FAN 3 INCH TELETYPE 182181	-	1	-	-	1	-	-	-	1	1	-	-	-	1	1	-	-	-	-	-	-	-	-	1	1	-
36	1211423	FUSE 1.8 AMP SLO-BLO TELETYPE 320246	-	1	-	-	1	-	-	-	1	1	-	-	-	1	1	-	-	-	-	-	-	-	-	1	1	-
37	1211396	FUSE IDENT PLATE 1.8A TELETYPE 182069	-	1	-	-	1	-	-	-	1	1	-	-	-	1	1	-	-	-	-	-	-	-	-	1	1	-
	PROCEDURE I	CONVERT 60 HZ MACHINE TO 50 HZ	-	A/R	-	-	A/R	-	-	-	A/R	A/R	-	-	-	A/R	A/R	-	-	-	-	-	-	-	-	A/R	A/R	-
	PROCEDURE II a.	MODIFY LINE VOLTAGE TO 240V	-	X	-	-	X	-	-	-	X	-	-	-	-	X	-	-	-	-	-	-	-	-	-	X	-	-
	PROCEDURE II b.	MODIFY LINE VOLTAGE TO 100V	-	-	-	-	-	-	-	-	-	X	-	-	-	-	X	-	-	-	-	-	-	-	-	-	-	-
	PROCEDURE III	INSTALL DIFFERENT LINE PLUG (CAP)	-	X	-	-	X	-	-	-	X	-	-	-	-	X	-	-	-	-	-	-	-	-	-	X	X	-
	PROCEDURE IV	INSTALL THYRECTORS	X	X	-	-	X	X	-	-	X	X	X	-	-	X	X	X	-	-	-	-	-	-	-	X	X	X
	PROCEDURE V	ACTIVATE AUTO PUNCH	-	-	-	-	X	X	-	-	-	-	-	-	-	-	-	-	-	-	-	-	-	-	X	X	-	-
	PROCEDURE VI	CONVERT KEYBOARD TO 8" BIT "1"	-	-	-	-	-	-	-	-	-	-	-	-	-	X	X	X	-	-	-	-	-	-	-	-	X	X
	PROCEDURE VII	INHIBIT ANSWER BACK BY ENQ (WRU)	-	-	-	-	-	-	-	-	-	-	-	-	-	X	X	X	-	-	-	-	-	-	-	-	X	X
	PROCEDURE VIII	INSTALL "TD" TYPEWHEEL	X	X	-	-	X	X	-	-	X	X	X	-	-	SEE NOTE 2	SEE NOTE 2	-	-	-	-	-	-	-	-	X	X	SEE NOTE 2
	PROCEDURE IX	ARRANGE FOR 20mA FULL DUPLEX	X	X	-	-	X	X	-	-	X	X	X	-	-	X	X	X	-	-	-	-	-	-	-	X	X	X
	PROCEDURE X	INSTALL LUF CAPACITOR	X	X	-	-	X	X	-	-	-	-	-	-	-	-	-	-	-	-	-	-	-	-	-	-	-	-
	PROCEDURE XI	INSTALL READER RUN ASSY (4915) AND CABLE	-	-	-	-	-	-	-	-	-	-	-	-	-	X	X	X	-	-	-	-	-	-	-	-	X	X
	PROCEDURE XII	INSTALL MATE-N-LOK INTERFACE CABLE	-	-	-	-	-	-	-	-	X	X	X	-	-	-	-	-	X	X	-	-	-	-	-	X	X	-
	PROCEDURE XIII	INSTALL TELEPHONE PLUG, JACK & CABLE	X	X	-	-	X	X	-	-	-	-	-	-	-	-	-	-	-	-	-	-	-	-	-	-	-	-
	PROCEDURE XIV	INSTALLATION ON STAND	X	X	-	-	X	X	-	-	X	X	X	-	-	X	X	X	-	-	-	-	-	-	-	X	X	X

REVISIONS	REV.
CHANGE NO.	
CHK	

FIRST USED ON OPTION/MODEL

UNLESS OTHERWISE SPECIFIED
 DIMENSION IN INCHES
 TOLERANCES
 DECIMALS ± .005
 FRACTIONS ± 1/64
 ANGLES ± 0°30'
 FINAL SURFACE QUALITY
 REMOVE BURRS AND BREAK SHARP CORNERS

DRN. *S. Chartier*
 DATE 9-20-73
 CHK'D. *D. J. Walsh*
 DATE 8/22/73
 ENG. *Allen Kent*
 DATE 14 June 73
 PRO. ENG. *Allen Kent*
 DATE 21 Aug 73
 PROD. *T. Hartman*
 DATE 8-21-73

digital EQUIPMENT CORPORATION
 MAYNARD, MASSACHUSETTS

TITLE SET UP & REWORK
 PROCEDURE FOR
 TTY3300 SERIES
 TTY WRITERS

SIZE/CODE C/PL
 NUMBER LT33-0-0
 REV. A

MATERIAL + +
 FINISH + +
 SCALE + +
 SHEET 2 OF 3

REV. A
 NUMBER LT33-0-0
 SIZE/CODE C/PL

This drawing and specifications, herein, are the property of Digital Equipment Corporation and shall not be reproduced or copied or used in whole or in part as the basis for the manufacture or sale of items without written permission. COPYRIGHT © 1973
DIGITAL EQUIP CORP.

NOTES TO PARTS LIST

- IN ALL CASES 60 HZ MACHINES CAN BE REWORKED FOR 50 HZ OPERATION INSTEAD OF STOCKING 50 HZ UNITS. ON THE BASIS OF EXPECTED VOLUME, INITIAL 50 HZ STOCKING IS EXPECTED TO BE AS FOLLOWS (REWORK PROCEDURE I)

DESC	50 HZ P.N.	STATUS	ALTERNATIVE
KSR	3011294-02	REWORK 3011294-01	STOCK
MAN ASR(TD)	3011294-04	STOCK	REWORK 3011294-03
MAN ASR(TV)	3011294-06	REWORK 3011294-05	SEE NOTE 2
AUTO ASR	3011294-08	REWORK 3011294-07	STOCK

- WITH THE EXCEPTION OF 3011294-03 (60 HZ) AND 3011294-04 (50 HZ) (BOTH MANUAL ASR WITH "TD" TYPEWHEEL) ALL UNITS MUST BE REWORKED BY REPLACING THE "TV" TYPEWHEEL SUPPLIED WITH A "TD" TYPEWHEEL. THE -03 AND -04 MACHINES ARE SPECIALS AND MAY SOMETIMES BE IN SHORT SUPPLY. THE -05 AND -06 MACHINES MAY BE SUBSTITUTED AS FOLLOWS:

DESCRIPTION	PART NO. NEEDED	ALTERNATIVES
MAN ASR (TD) 60 HZ	3011294-03	REWORK (IX) 3011294-05
MAN ASR (TD) 50 HZ	3011294-04	REWORK (IX) 3011294-06 OR REWORK (I & IX) 3011294-05

- MODIFICATION KITS
- LT33-MA "ASR for 8, 8/I, 8/L, 8/S"
USE PARTS LIST FOR LT33-DC OMITTING ITEMS 1, 1A, AND 5. IN ADDITION, ONE CABLE ASSY 4915 TO W076 P.N. 7005676-1 IS REQUIRED. FOLLOW PROCEDURES FOR LT33-DC.
- LT33-MB "ASR for 8/E, 11, 15"
USE PARTS LIST FOR LT33-DC OMITTING ITEMS 1 AND 1A. FOLLOW PROCEDURES FOR LT33-DC.
- LT33-MC "KSR for 8, 8/I, 8/L, 8/S"
USE PARTS LIST FOR LT33-CC OMITTING ITEMS 1, 1A, AND 5. IN ADDITION, ONE CABLE ASSY TTY TO W076 P.N. 7005011-1 IS REQUIRED. FOLLOW PROCEDURES FOR LT33-CC.
- LT33-MD "KSR for 8/E, 11, 15"
(Also for LT33-E or -H type.)
USE PARTS LIST FOR LT33-CC OMITTING ITEMS 1 AND 1A. FOLLOW PROCEDURES FOR LT33-CC.

ALTERNATIVELY, A W078 ADAPTER MODULE ADDED TO AN LT33-MB OR LT33-MD KIT CAN BE USED WHEN AN LT33-MA OR LT33-MC KIT IS REQUIRED.

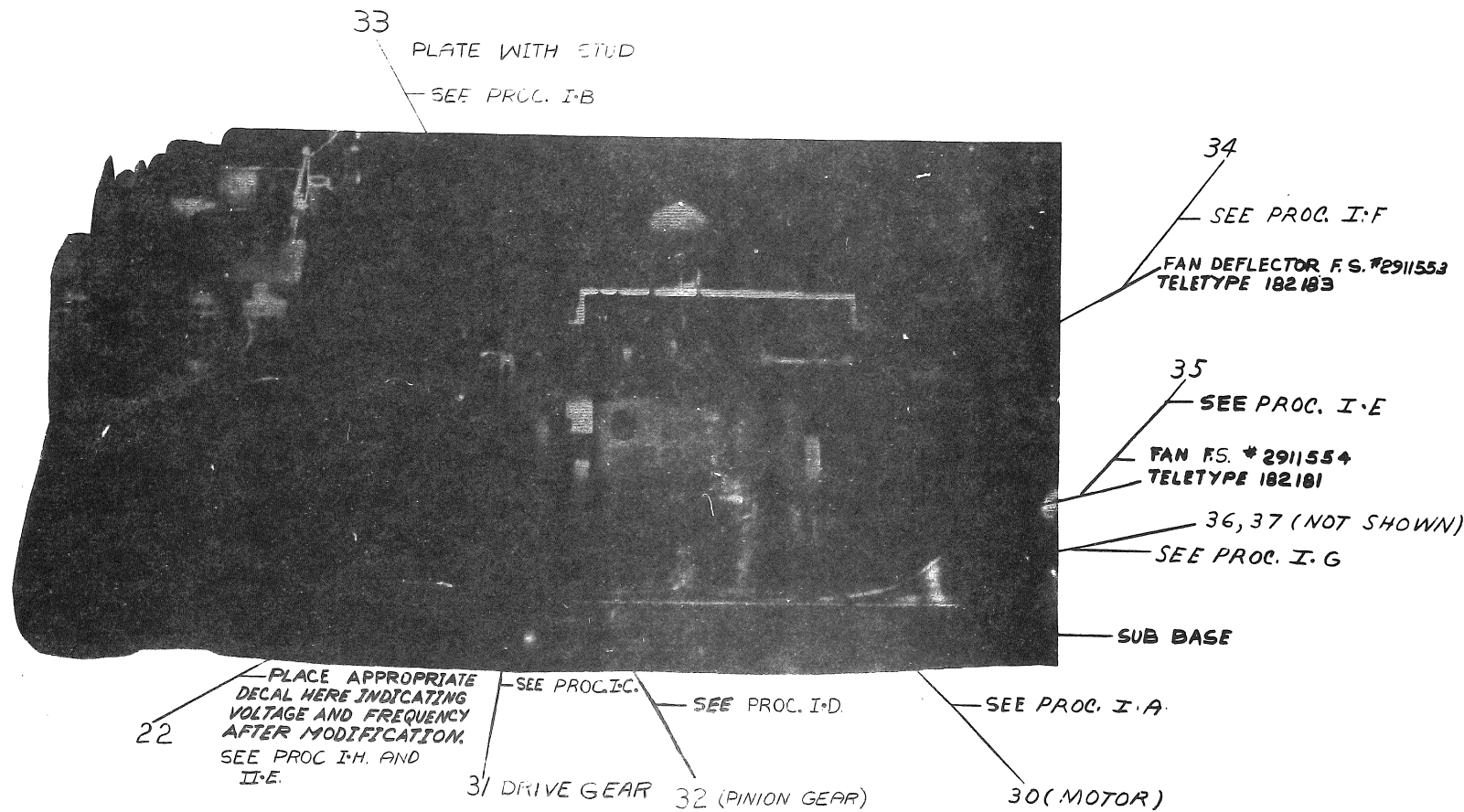
REV.	
CHANGE NO.	
CHK	

FIRST USED ON OPTION/MODEL	QTY.	DESCRIPTION	PART NO.	ITEM NO.
PARTS LIST				
UNLESS OTHERWISE SPECIFIED DIMENSION IN INCHES. TOLERANCES	DRN. <i>J. Chatter</i>	DATE 4-20-73	digital EQUIPMENT CORPORATION MAYNARD, MASSACHUSETTS	
DECIMALS	CHK'D <i>J. Chatter</i>	DATE 8-2-73		
ANGLES	ENG. <i>Allen Kent</i>	DATE 4 June 73	TITLE SET UP & REWORK PROCEDURE FOR TTY3300 SERIES TTY WRITERS	
.XXX = .005 .XX = .02 .X = .1	PROJ. ENG. <i>Allen Kent</i>	DATE 2-24-73		
REMOVE BURRS AND BREAK SHARP CORNERS SURFACE QUALITY ✓	PROD. <i>Frank Gorton</i>	DATE 8-23-73	SIZE CODE NUMBER REV C PL LT33-0-0 A	
MATERIAL	NEXT HIGHER ASSY.			
FINISH	D-UA-LT33-0-0		SCALE SHEET 3 OF 3 DIST.	

REV. A
NUMBER LT33-0-0
SIZE CODE C

This drawing and specifications, herein, are the property of Digital Equipment Corporation and shall not be reproduced or copied or used in whole or in part as the basis for the manufacture or sale of items without written permission. COPYRIGHT © 1973
DIGITAL EQUIP. CORP.

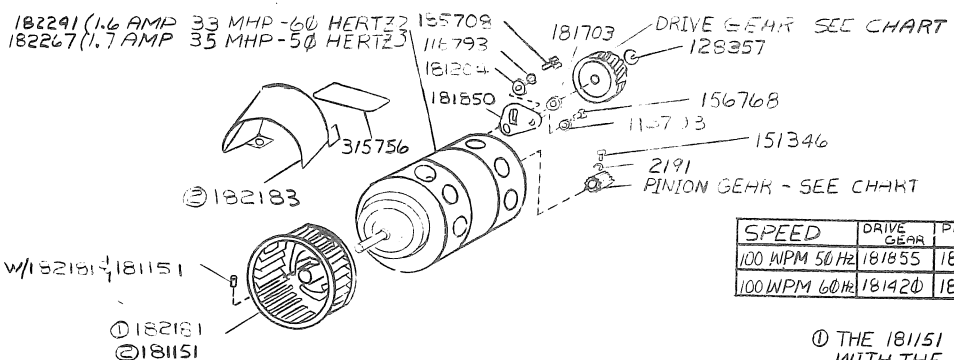
REV. A
LT33-0-0
SIZE CODE
DUA
2



PROCEDURE I
 CONVERT 60 HZ MACHINE TO 50 HZ
 SEE DETAIL A & B)

- REMOVE 182241 SPLIT-PHASE START MOTOR AND REPLACE WITH ITEM #30 (NOT NECESSARY IF MOTOR IS ALREADY RATED 50/60 HZ ON NAME PLATE) IF 181870 CAPACITOR START MOTOR IS ENCOUNTERED MOTOR START CAPACITOR MUST ALSO BE REMOVED WHEN INSTALLING ITEM #30. SEE 1180 SD-B10 AND 4405 WD. (TELETYPE DRAWINGS)
- REMOVE 181416 PLATE WITH STUD AND REPLACE WITH ITEM #33 (NOT NECESSARY WHEN 181850 PLATE WITH STUD (UNIVERSAL) IS SUPPLIED (NOW STANDARD). 181850 PART IS IDENTIFIED BY LONG ADJUSTMENT SLOT.)
- REMOVE 181420 DRIVE GEAR AND REPLACE WITH ITEM #31
- REMOVE 181411 PINION GEAR AND REPLACE WITH ITEM #32.
- REMOVE 181151 FAN (2 1/2 INCH DIA) AND REPLACE WITH ITEM #35 (3 INCH DIA. FAN). (NOT NECESSARY) IF 3 INCH DIA. FAN ALREADY SUPPLIED.)
- ADD AIR DEFLECTOR ITEM #34 OVER FAN
- REPLACE MOTOR FUSE (2 OR 2 1/4 AMP) WITH 1.8 AMP SLO-BLO ITEM #36. CHANGE FUSE LABEL TO ITEM #37.
- PLACE APPROPRIATE FREQUENCY DECAL ITEM #22 ON REAR OF MACHINE

31 DRIVE GEAR 32 (PINION GEAR) 30 (MOTOR)
 DETAIL "A"
 (REAR VIEW WITH COVER REMOVED)



SPEED	DRIVE GEAR	PINION GEAR
100 WPM 50 HZ	181855	181851
100 WPM 60 HZ	181420	181411

① THE 181151 FAN (2 1/2" DIA.) IS USED WITH THE 181870 AND 182241 MOTORS.
 ② THE 182181 FAN (3" DIA.) AND THE 182183 AIR DEFLECTOR ARE USED WITH THE 182267 MOTOR.

DETAIL "B"
 MOTOR ASSY EXPLODED VIEW
 (TAKEN FROM TELETYPE
 SEC. 574-122-8007C
 ISS. 7 PAGE 35)

REV.	CHANGE NO.	DATE	BY
1	LT33-00008	1-30-74	A
2	LT33-00009	1-30-74	A

NEXT HIGHER ASSY	QTY.	DESCRIPTION	PART NO.	ITEM NO.
B-DD-LT33-0				
PARTS LIST				
UNLESS OTHERWISE SPECIFIED	DRN.	DATE	digital EQUIPMENT CORPORATION MAYNARD, MASSACHUSETTS	
UNLESS OTHERWISE SPECIFIED	CHK'D.	DATE	TITLE	
DIMENSION IN INCHES	D. Hensley	3/22/73	SET-UP & REWORK	
TOLERANCES	ENG.	DATE	PROCEDURE FOR TTY	
DECIMALS FRACTIONS ANGLES	Alan Kent	14 June 73	3300 SERIES TTY	
± .005 ± 1/64 ± 0°30'	PROJ. ENG.	DATE	WRITERS	
FINAL SURFACE QUALITY / REMOVE BURRS AND BREAK SHARP CORNERS	Alan Kent	21 Aug 73		
	PROJ.	DATE		
	PROJ.	DATE		
	PROJ.	DATE		
MATERIAL	FIRST USED ON	SIZE CODE NUMBER REV.		
FINISH	LT33 TYPE	DUA	LT33-0-0	A
	SCALE NONE	DIST.		
	SHEET OF 8			

"THIS DRAWING AND SPECIFICATIONS, HEREIN, ARE THE PROPERTY OF DIGITAL EQUIPMENT CORPORATION AND SHALL NOT BE REPRODUCED OR COPIED OR USED IN WHOLE OR IN PART AS THE BASIS FOR THE MANUFACTURE OR SALE OF ITEMS WITHOUT WRITTEN PERMISSION. COPYRIGHT © 1973, DIGITAL EQUIPMENT CORPORATION"

**PROCEDURE II
MODIFY LINE VOLTAGE
(INSTALL TRANSFORMER)**

SEE DETAIL A, C, AND D FOR OPERATION ON VOLTAGES OTHER THAN 115V PERFORM THE FOLLOWING OPERATIONS:

- A. DRILL FOUR 3/16 INCH DIA HOLES IN BASE MOUNTING PLATE AS SHOWN IN DETAIL "C"
- B. MOUNT TRANSFORMER ITEM #13 WITH ITEM #4 THRU ITEM #17.
- C. CUT CORDSET ITEM #18 AS SHOWN AND WIRE PER TABLE AND DETAIL "D" USING ITEM #19.
- D. PLUG TELETYPE CORD INTO FEMALE RECEPTACLE PART OF ITEM #18
- E. PLACE APPROPRIATE VOLTAGE DECAL ITEM #22 AS SHOWN IN DETAIL "A".

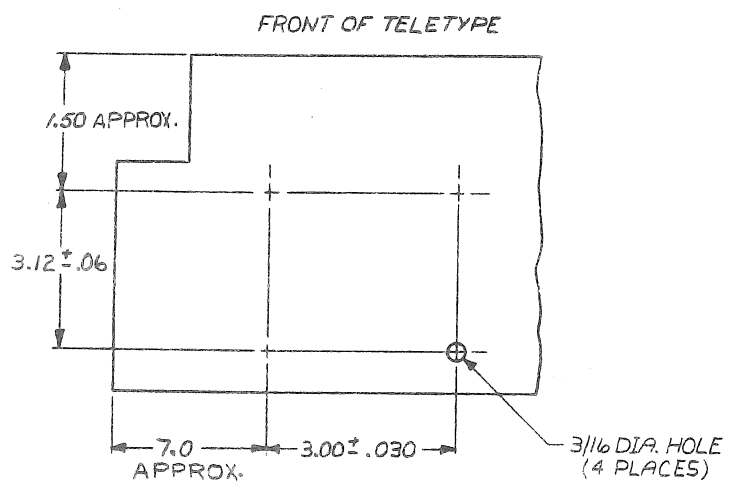
**PROCEDURE III
CHANGE MALE CORD CAP**

SEE DETAIL "D" AND "E"

- A. DETERMINE FROM PARTS LIST WHICH CAP IS TO BE PUT ON.
- B. IF TRANSFORMER ITEM #13 IS INSTALLED CUT OFF THE MALE CAP FROM THE CORDSET ITEM #18, OTHERWISE CUT OFF THE MALE CAP FROM THE TELETYPE'S CORD.
- C. SLIDE THE COVER ITEM #21 IF REQUIRED ONTO THE CORD AND WIRE THE CAP ITEM #20 AS SHOWN IN DETAIL "E".
- D. FIT THE COVER IF USED OVER THE CAP AS SHOWN IN DETAIL "E".

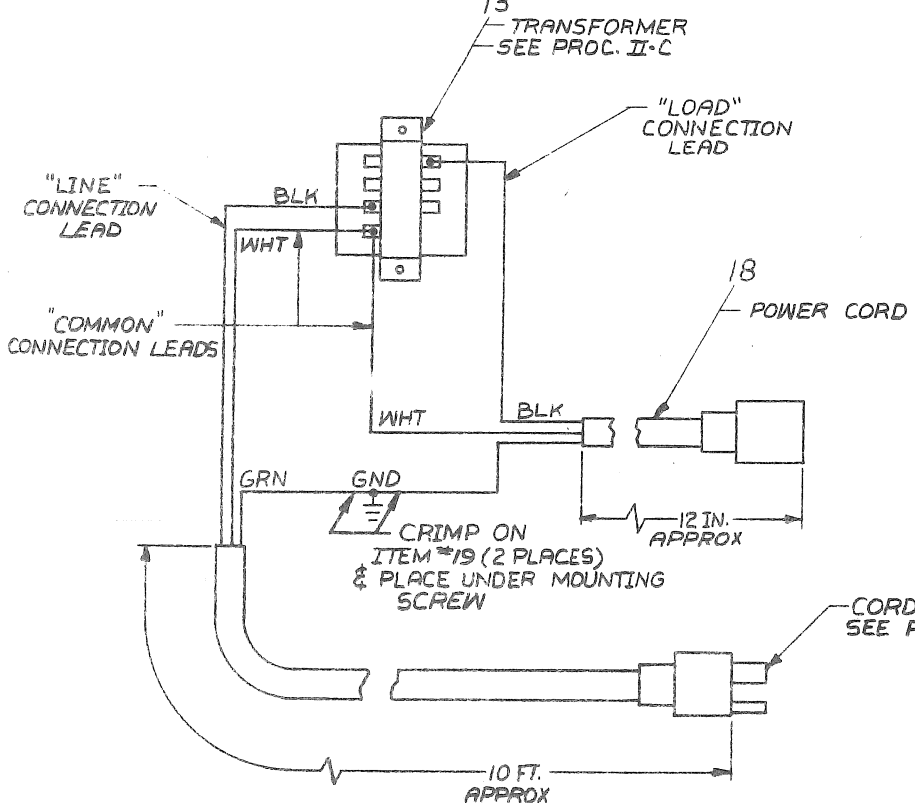
NOTE:

PDP-9 AND EARLY PDP-10 TELETYPE WERE SUPPLIED WITH A NEMA 5-15P (115V) CAP PAINTED RED WHEN WIRED FOR 190 TO 250 VOLTS

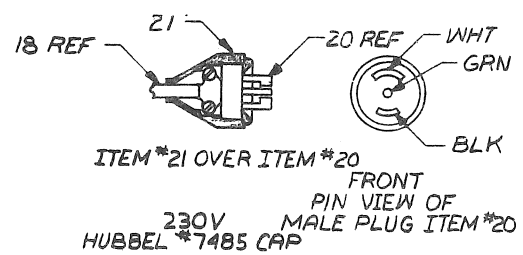
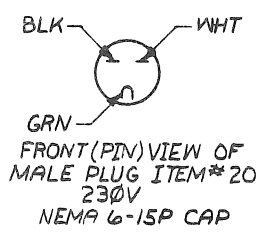


REAR OF TELETYPE
SCALE: NONE
HOLE DRILLING DIAGRAM FOR MOUNTING OF TRANSFORMER, ITEM #5, TO PLATE INSIDE BOTTOM OF BASE. (PROC. II-A)

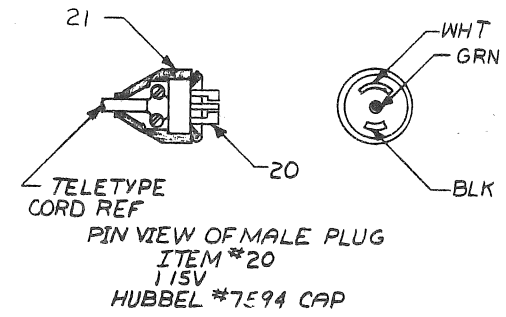
DETAIL "C"



**TRANSFORMER MOUNTING & WIRING
DETAIL "D"**



**DETAIL "E"
CORD CAP WIRING
(PROC III)**



TRANSFORMER TAP TABLE

VOLTAGE	LINE	LOAD	COMMON	VOLTAGE	LINE	LOAD	COMMON
126	6	4	C	287	3	4	C
121	5	4	C	275	2	4	C
115	6	6	C	274	3	5	C
110	5	4	1	265	1	4	C
				263	2	5	C
				260	3	6	C
				252	1	5	C
				250	2	6	C
106	6	4	1	240*	1	6	C
100*	1	3	4	220	C	6	1
96	C	1	5	213	C	6	2
90	C	2	5	213	C	5	1
85	C	3	6	206	C	6	3
82	C	2	4	204	C	5	2
77	C	3	4	203	C	4	1
				198	C	5	3
				197	C	4	2
				193	C	4	3

* INDICATES STD FACTORY CONNECTIONS
THIS TABLE PROVIDES 115V TO THE LOAD AT THE NORMAL LINE VOLTAGE

REVISIONS

CHK	CHANGE NO.	REV.

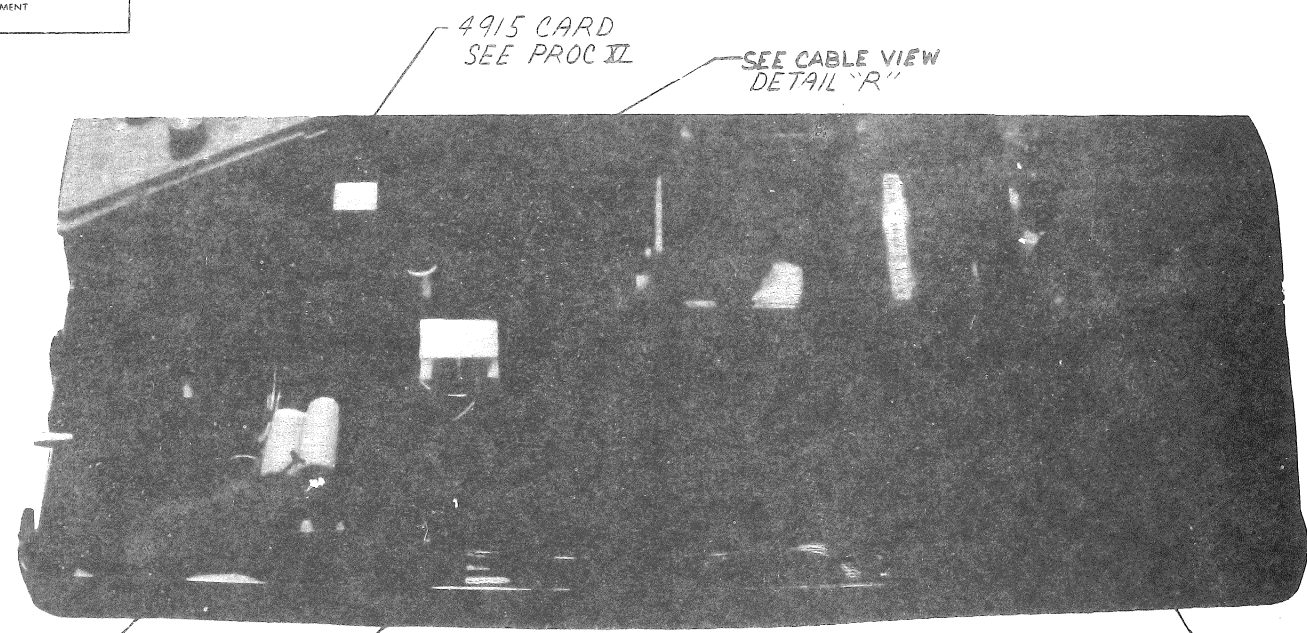
THIS DRAWING AND SPECIFICATIONS HEREIN ARE THE PROPERTY OF DIGITAL EQUIPMENT CORPORATION AND SHALL NOT BE REPRODUCED OR COPIED OR USED IN WHOLE OR IN PART AS THE BASIS FOR THE MANUFACTURE OR SALE OF ITEMS WITHOUT WRITTEN PERMISSION. COPYRIGHT © 1973, DIGITAL EQUIPMENT

**PROCEDURE IV
INSTALL THYRECTORS**

- SEE DETAILS "F" & "G"
- A. CUT TUBING ITEM #24 AND PLACE ON LEADS OF THYRECTORS ITEM #8
 - B. PULL BACK THE RUBBER BOOT WHICH COVERS THE TERMINALS ON THE LINE OFF-LOCAL SWITCH
 - C. INSTALL THYRECTORS USING TERMINAL ITEM #7 PER TABLE IN DETAIL "G"
 - D. IF RELAY CONTROLLED READER (READER RUN) MODIFICATION IS NOT GOING TO BE INSTALLED (PROCEDURE XI) REPLACE RUBBER BOOT SO ALL TERMINALS ARE COVERED.

**PROCEDURE V
ACTIVATE AUTOMATIC PUNCH**
(CONTROLLED BY DC2 & DC4)
SEE DETAIL "H"

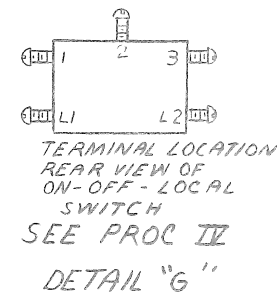
- A. TO ACTIVATE THE AUTOMATIC PUNCH FEATURE (PUNCH CONTROLLED BY DC2 & DC4) REMOVE THE TWO DISABLING CLIPS SHOWN IN DETAIL "H"
- NOTE:
TO INACTIVATE AUTO PUNCH FEATURE
INSTALL TWO TELETYPE P.N. 187001 CLIPS,
ONE IN EACH SLOT SHOWN IN DETAIL "H".
(RECEIVED WITH AUTO PUNCH INACTIVATED)



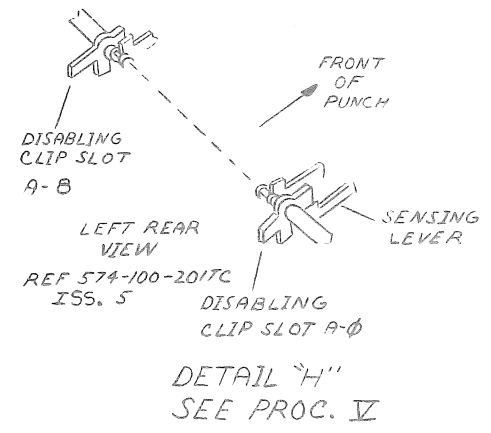
4915 CARD
SEE PROC XII
SEE CABLE VIEW
DETAIL "R"

SEE PROC. IV
6RS2OSP4B4
THYRECTORS
SEE DETAIL "N"
AND PROC. IX

DETAIL "F"
(RIGHT SIDE VIEW)



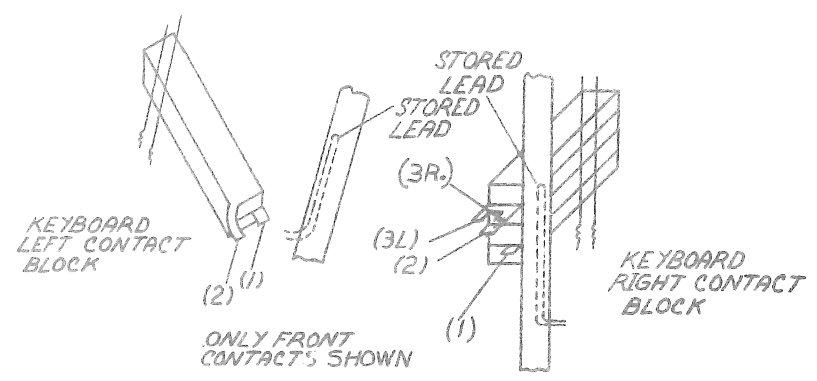
FROM	TERMINAL	COMPONENT	TO	TERMINAL
L2	ITEM #7	THYRECTOR ITEM #8	2	ITEM #7
1	ITEM #7	THYRECTOR ITEM #3		



REVISIONS		
CHK	CHANGE NO	REV

THIS DRAWING AND SPECIFICATIONS HEREIN ARE THE PROPERTY OF DIGITAL EQUIPMENT CORPORATION AND SHALL NOT BE REPRODUCED OR COPIED OR USED IN WHOLE OR IN PART AS THE BASIS FOR THE MANUFACTURE OR SALE OF ITEMS WITHOUT WRITTEN PERMISSION.
 COPYRIGHT © 1973, DIGITAL EQUIPMENT CORPORATION

KEYBOARD PARITY MODIFICATIONS

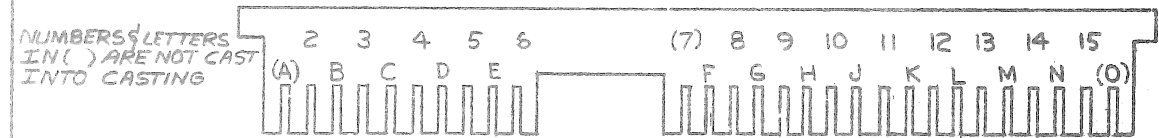


OPTION	LEFT CONTACT BLOCK			RIGHT CONTACT BLOCK				SLEEVE & STORE
	TERM1	TERM2	SLEEVE	TERM1	TERM2	TERM3R	TERM3L	
EVEN PARITY (AS RECEIVED)	WHT-BLK	RED-GRN	GRN	YEL	WHT-SLATE	WHT-BLK	-	GRN
8TH BIT MARKING	WHT-BLK	GRN	RED-GRN	YEL	WHT-SLATE	WHT-BLK	GRN	-
8TH BIT SPACING (NOT USED BY DEC)	WHT-BLK	RED-GRN	GRN	YEL	-	WHT-BLK	-	WHT-SLATE GRN

REFERENCES
 SEC 574-100-201 TC ISS-5
 9339 W/D ISS-1

FUNCTION BOX CASTING (REF)

DETAIL "J"
 SEE PROC. VI



TELETYPE P.N. 186782 STOP CLIP IN A SLOT TO DISABLE AUTO CR LF ON 72ND CHAR (RECEIVED DISABLED)

REFERENCE SECTION 574-100-101TC ISS 2
 FRONT SCHEMATIC VIEW OF CODE BAR TIE BAR

NO CLIP IN "F" SLOT ENABLES RIGHT MARGIN BELL AND END-OF-LINE BELL (RECEIVED ENABLED)

TELETYPE P.N. 186781 STOP CLIP IN "S" SLOT TO DISABLE WRU (ENG) ACTIVATED ANSWERBACK

NOTE: IT IS NOT NECESSARY TO REMOVE THE WRU STUNT BOX PAWL OR SPRING

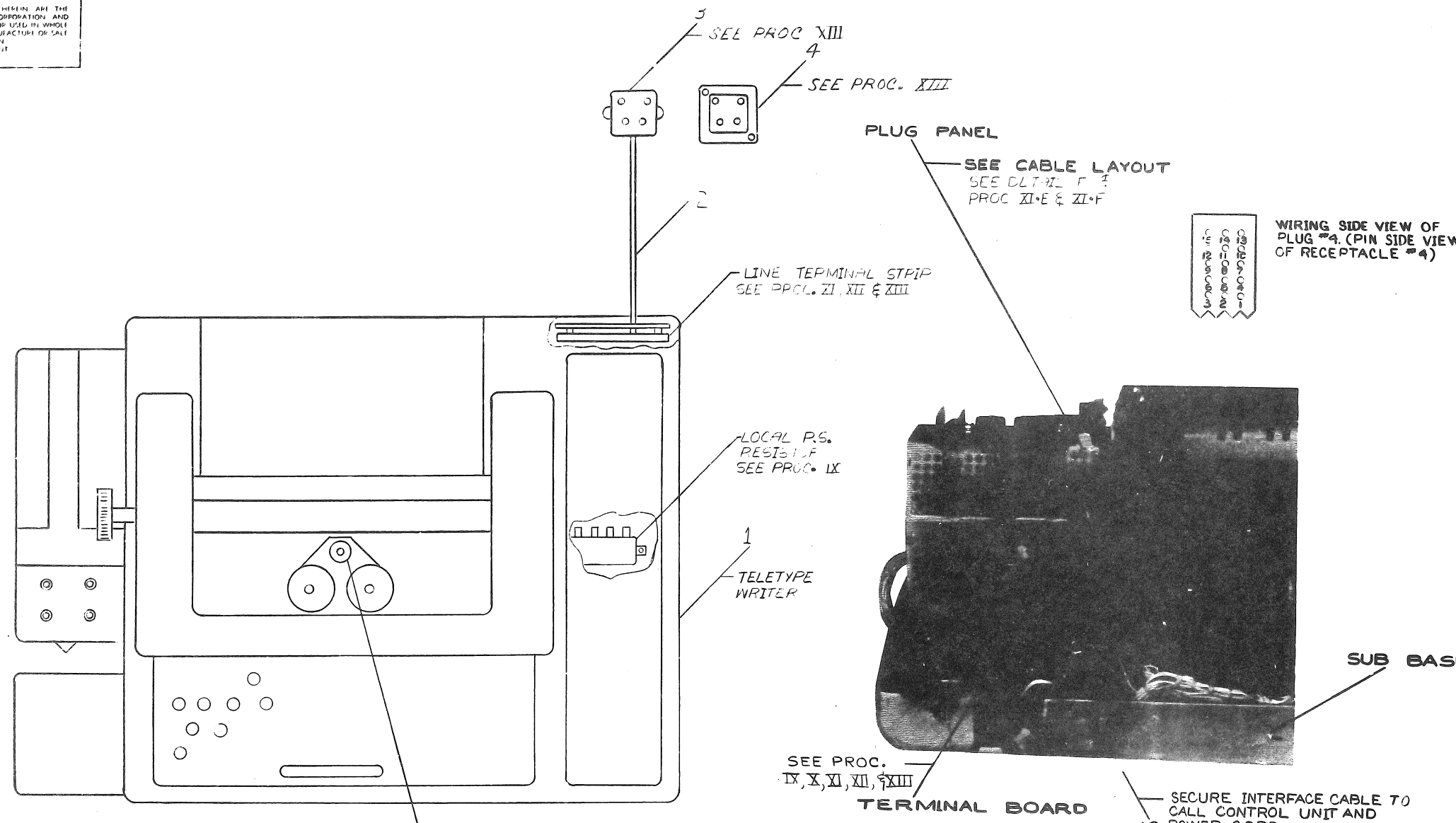
DETAIL "K"
 SEE PROC. VII

PROCEDURE VI
 CONVERT KEYBOARD TO 8TH BIT MARKING (T)
 SEE DETAIL "J"
 A. LOCATE THE FRONT TAB CONNECTIONS ON THE CONTACT BLOCKS AT THE LEFT AND RIGHT ENDS OF THE KEYBOARD.
 B. REMOVE THE RED-GRN LEAD FROM TERMINAL 2 OF THE LEFT CONTACT BLOCK. SLEEVE (INSULATE) THIS WIRE.
 C. UNTIE AND UNSLEEVE THE GRN LEAD NEAR THE LEFT CONTACT BLOCK AND CONNECT TO TERMINAL 2.
 D. TIE THE SLEEVED RED-GRN LEAD TO THE NEARBY BAR.
 E. UNTIE AND UNSLEEVE THE GRN LEAD NEAR THE RIGHT CONTACT BLOCK AND CONNECT TO TERMINAL 3L.
 NOTE:
 TO INSTALL PARITY OR 8TH BIT SPACING FOLLOW CHART IN DETAIL "J".

PROCEDURE VII
 INHIBIT ANSWERBACK CAUSED BY ENG (WRU)
 SEE DETAIL "K"
 A. DO NOT REMOVE ENG (WRU) STUNT BOX PAWL OR SPRING
 B. LOCATE SLOT "IS" IN CODEBAR BASKET TIE BAR.
 C. INSTALL SHORT FUNCTION LEVER STOP CLIP ITEM #23 IN SLOT 15 TO INHIBIT ENG (WRU) INITIATED ANSWERBACK
 NOTE:
 ALSO VERIFY THAT SLOT "A" CONTAINS ALONG STOP CLIP TELETYPE P.N. 186782 AND THAT SLOT "F" DOES NOT CONTAIN A STOP CLIP.

REV.	CHANGE NO.	REV.

THIS DRAWING AND SPECIFICATIONS, HEREIN ARE THE PROPERTY OF DIGITAL EQUIPMENT CORPORATION AND SHALL NOT BE REPRODUCED OR COPIED OR USED IN WHOLE OR IN PART AS THE BASIS FOR THE MANUFACTURE OR SALE OF ITEMS WITHOUT WRITTEN PERMISSION. COPYRIGHT © 1973, DIGITAL EQUIPMENT CORPORATION



PROCEDURE VIII
INSTALL "TD" TYPE WHEEL
 SEE DETAIL "L"

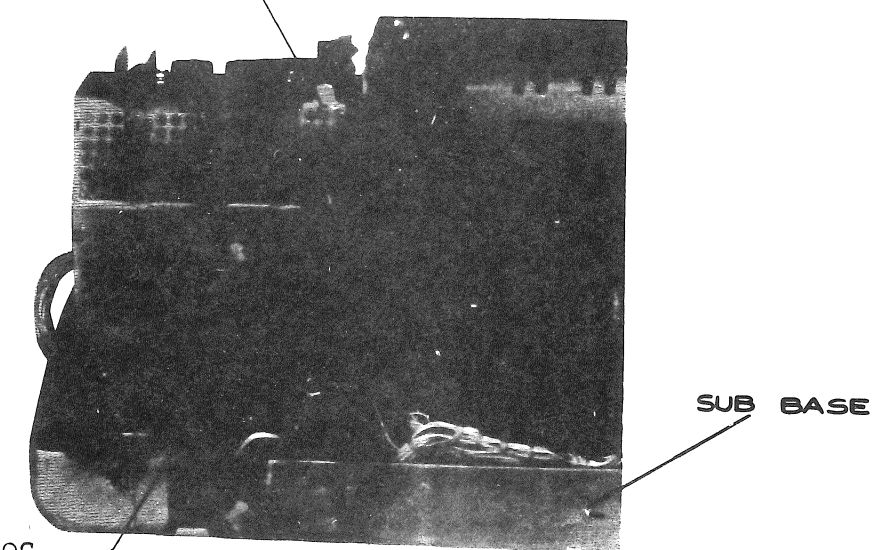
- REMOVE "TV" TYPE WHEEL SUPPLIED (□ = LETTER OH; 0 = NUMERAL ZERO)
- INSTALL "TD" TYPE WHEEL USING ADJUSTING TOOL TELETYPE P.N. 180588 (O = LETTER OH, Ø = NUMERAL ZERO)
- CHECK "FINAL PRINTING ALIGNMENT" AS SPECIFIED IN SECT. 574-122-700 TC AND REFINE ADJUSTMENTS AS NEEDED.

PROCEDURE IX
ARRANGE FOR 20m A FULL DUPLEX OPERATION
 SEE DETAILS "F", "L", "M" AND "N"

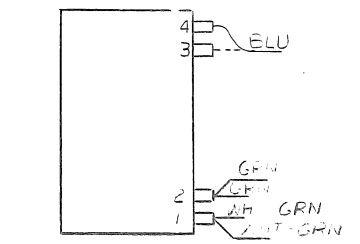
- REMOVE BRN/YEL WIRE FROM TERMINAL 3 OF THE LINE TERMINAL STRIP AND MOVE IT TO TERMINAL 5.
- REMOVE BLU/WHI WIRE FROM TERMINAL 4 AND MOVE TO TERMINAL 5.
- REMOVE PURPLE WIRE FROM TERMINAL 8 AND MOVE TO TERMINAL 9.
- MOVE THE BLUE WIRE FROM TERMINAL 3 OF THE LOCAL POWER SUPPLY RESISTOR TO TERMINAL 4.

PROCEDURE X
INSTALL 1µF CAPACITOR
 SEE DETAIL "M"

- CUT TUBING ITEM #24 AND PLACE ON LEADS OF CAPACITOR ITEM #9.
- INSTALL CAPACITOR BETWEEN TERMINALS 3 & 4 OF THE LINE TERMINAL STRIP USING TERMINAL LUGS ITEM #7.



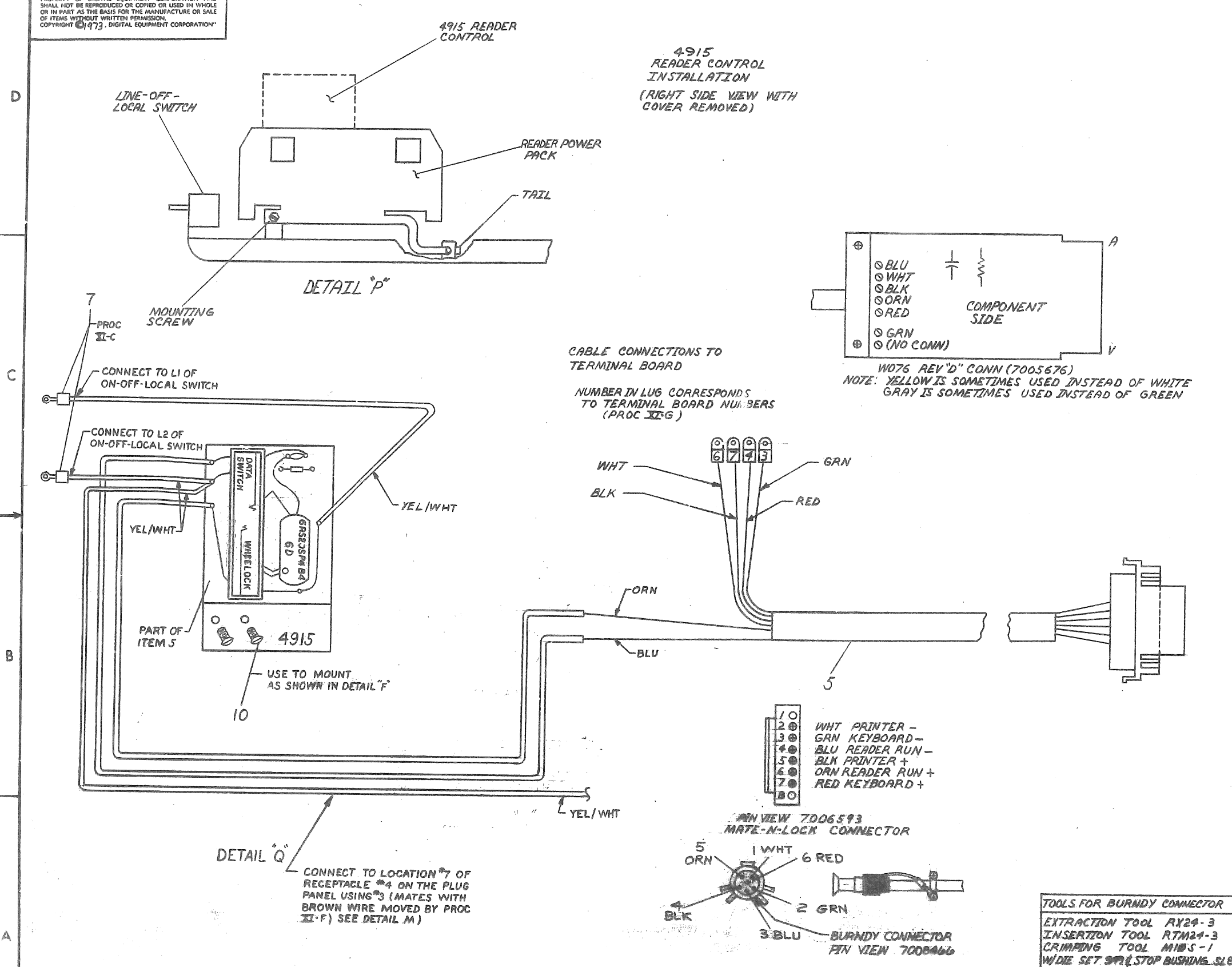
1A SEE PROC. VIII
 DETAIL "L"



LOCAL PWR SUPPLY
 POWER RESISTOR
 SEE PROC IX.D
 DETAIL N

REVISIONS		
CHK	CHANGE NO	REV

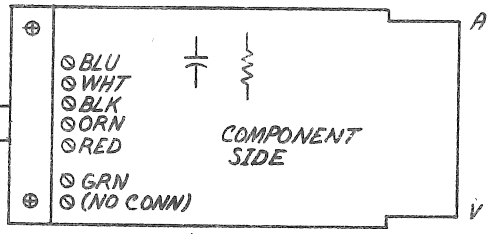
"THIS DRAWING AND SPECIFICATIONS, HEREIN, ARE THE PROPERTY OF DIGITAL EQUIPMENT CORPORATION AND SHALL NOT BE REPRODUCED OR COPIED OR USED IN WHOLE OR IN PART AS THE BASIS FOR THE MANUFACTURE OR SALE OF ITEMS WITHOUT WRITTEN PERMISSION. COPYRIGHT © 1973, DIGITAL EQUIPMENT CORPORATION"



4915
READER CONTROL
INSTALLATION
(RIGHT SIDE VIEW WITH
COVER REMOVED)

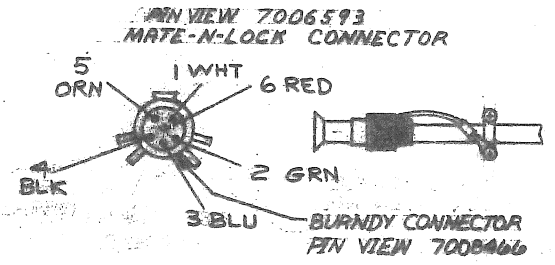
DETAIL "P"

CABLE CONNECTIONS TO
TERMINAL BOARD
NUMBER IN LUG CORRESPONDS
TO TERMINAL BOARD NUMBERS
(PROC XI-G)



W076 REV "D" CONN (7005676)
NOTE: YELLOW IS SOMETIMES USED INSTEAD OF WHITE
GRAY IS SOMETIMES USED INSTEAD OF GREEN

- 1 0 WHT PRINTER -
- 2 0 GRN KEYBOARD -
- 3 0 BLU READER RUN -
- 4 0 BLK PRINTER +
- 5 0 ORN READER RUN +
- 6 0 RED KEYBOARD +
- 7 0
- 8 0



TOOLS FOR BURNDY CONNECTOR
EXTRACTION TOOL RY24-3
INSERTION TOOL RTM24-3
CRIMPING TOOL M185-1
W/DIE SET 991 (STOP BUSHING SL8)

- PROCEDURE XI**
- INSTALL READER RUN CONTROL (4915) AND INTERFACE CABLE ASSY. SEE DETAILS "L", "M", "P", "Q".
- A. REMOVE READER POWER PACK AND SET ASIDE AS FOLLOWS (DETAIL "P"):
 - I. REMOVE MOUNTING SCREW (SAVE)
 - II. LIFT READER PACK AND UNHOOK TAIL
 - III. SET POWER PACK ASIDE (UNPLUG IF DESIRED)
 - B. INSTALL 4915 MODULE (PART OF ITEM #5) ON CALL CONTROL UNIT BRACKET AS SHOWN IN DETAIL "F" USING SCREWS ITEM #10
 - C. INSTALL TWO YEL/WHT WIRES FROM 4915 ON LINE-OFF-LOCAL SWITCH AS INDICATED IN DETAIL "Q" USING TERMINAL LUG ITEM #7
 - D. REPLACE RUBBER BOOT ON LINE-OFF-LOCAL SWITCH SO ALL TERMINALS ARE COVERED.
 - E. CONNECT YEL/WHT WIRE FROM 4915 TO LOCATION #7 OF RECEPTACLE #4 ON THE CALL CONTROL PANEL AS INDICATED IN DETAIL "Q" USING PIN ITEM #6
 - F. MOVE BROWN WIRE FROM LOCATION #11 TO LOCATION #7 OF PLUG #4 (SEE DETAIL "M")
 - G. INSTALL FOUR WIRES OF INTERFACE CABLE ON LINE TERMINAL STRIP:

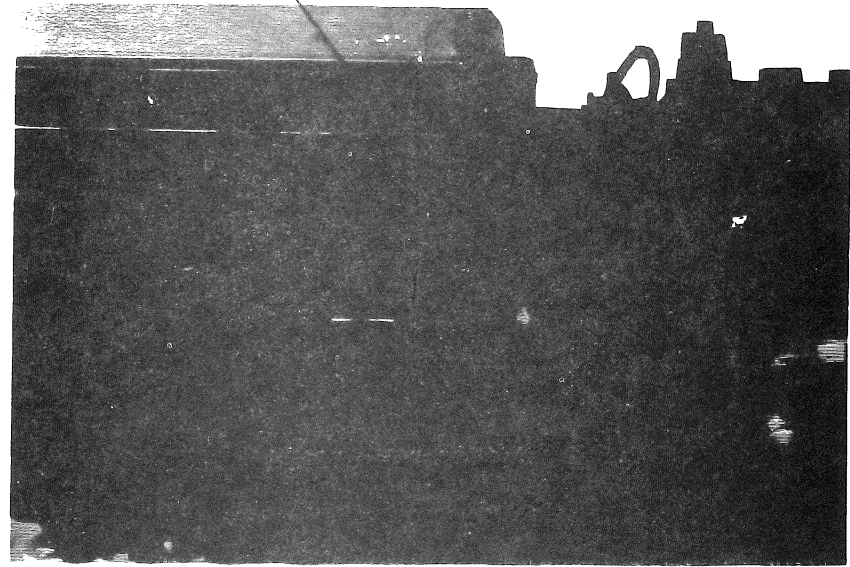
GRN	TERM #3
RED	TERM #4
BLK	TERM #7
WHT	TERM #6
 - H. REPLACE TERMINAL STRIP COVER
 - I. USING TIES ITEMS #11 AND #12, TIE WIRING AS SHOWN IN DETAIL "M" AND "R"
 - J. REINSTALL READER POWER PACK AS FOLLOWS (DETAIL "P"):
 - I. PLUG POWER PACK CABLE INTO PACK IF REMOVED.
 - II. HOOK TAIL OF POWER PACK INTO BRACKET
 - III. INSTALL MOUNTING SCREW PREVIOUSLY REMOVED.

ENGINEERING NOTE:
TELETYPE DRAWINGS 6353WD (33TU) AND 7839WD (33TY) SPECIFY THAT TERMINAL 3 ON LINE TERMINAL STRIP IS - (NEGATIVE) AND TERMINAL 4 IS + (POSITIVE). TELETYPE DRAWING 1180 SD (3300) DOES NOT SPECIFY. IN LOCAL AND IN HALF DUPLEX OPERATION THE KEYBOARD IS OPERATED AS IF 3 WERE + (POS) AND 4 WERE - (NEG). SINCE NOTHING IN THE KEYBOARD, READER, DISTRIBUTOR AREA IS POLARITY SENSITIVE THE CHOICE OF POLARITY DOES NOT MATTER. PROCEDURES XI AND XII ARE NOT CONSISTENT WITH PROCEDURE XIII IN THIS RESPECT.

REVISIONS		
CHK	CHANGE NO.	REV.

THIS DRAWING AND SPECIFICATIONS, HEREIN, ARE THE PROPERTY OF DIGITAL EQUIPMENT CORPORATION AND SHALL NOT BE REPRODUCED OR COPIED OR USED IN WHOLE OR IN PART AS THE BASIS FOR THE MANUFACTURE OR SALE OF ITEMS WITHOUT WRITTEN PERMISSION. COPYRIGHT © 1973, DIGITAL EQUIPMENT

WRIT. PAWL & SPRINGS
 SEE PROC. XII-A
 DO NOT REMOVE PART

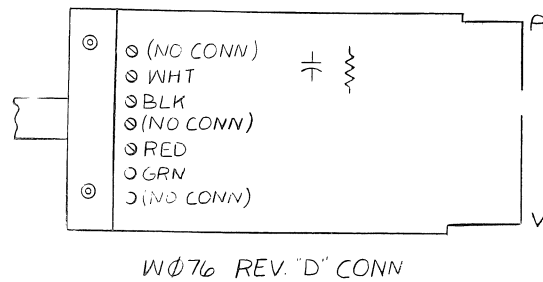


TIE WIRE
 PROC. XI-H

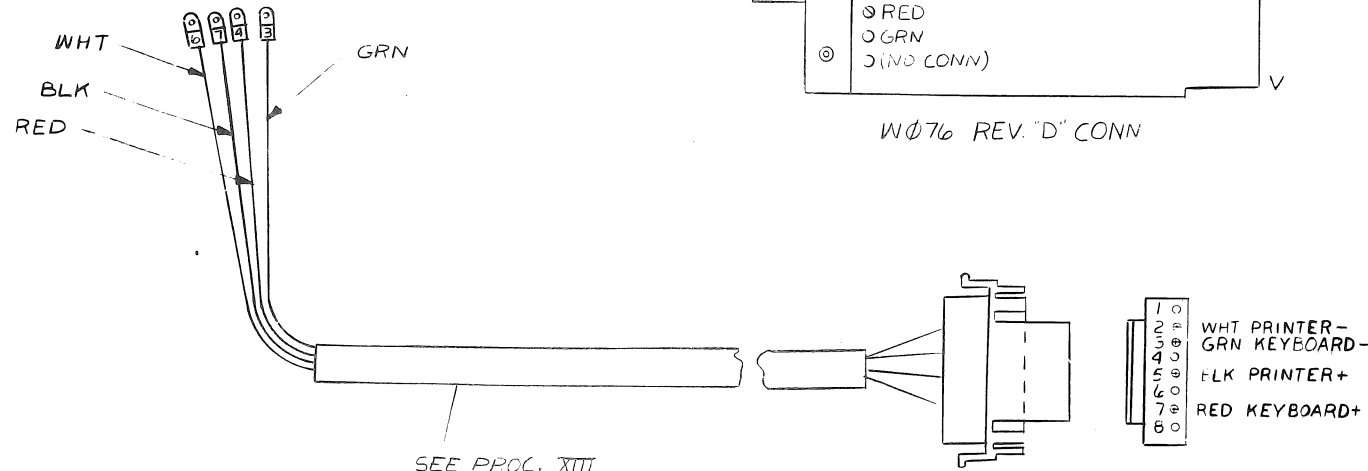
DETAIL "R"

CABLE CONNECTIONS TO
 TERMINAL BOARD NUMBER IN
 LUG CORRESPONDS TO TERMINAL
 BOARD NUMBER

WHT
 BLK
 RED
 GRN



W076 REV. "D" CONN



SEE PROC. XIII

DETAIL "S"

1 0
 2 0
 3 0
 4 0
 5 0
 6 0
 7 0
 8 0
 WHT PRINTER-
 GRN KEYBOARD-
 BLK PRINTER+
 RED KEYBOARD+

PROCEDURE XII
 INSTALL MATE-N-LOCK INTERFACE
 CABLE

SEE DETAILS "M" & "S"

- A. INSTALL FOUR WIRES OF INTERFACE CABLE ITEM #5 ON LINE TERMINAL STRIP.
- | | |
|-----|---------|
| GRN | TERM #3 |
| RED | TERM #4 |
| BLK | TERM #7 |
| WHT | TERM #6 |
- B. REPLACE TERMINAL STRIP COVER.
 C. USING TIES ITEM #11 TIE INTERFACE CABLE AS SHOWN IN DETAIL "M"

PROCEDURE XIII

- INSTALL TELEPHONE PLUG & JACK
 SEE DETAIL "L", "M" & "T"
- A. ASSEMBLE TELEPHONE CORDSET ITEM #2 TO TELEPHONE PLUG ITEM #3 BY WIRING THE SHORT WIRE END OF THE CORDSET AS FOLLOWS:

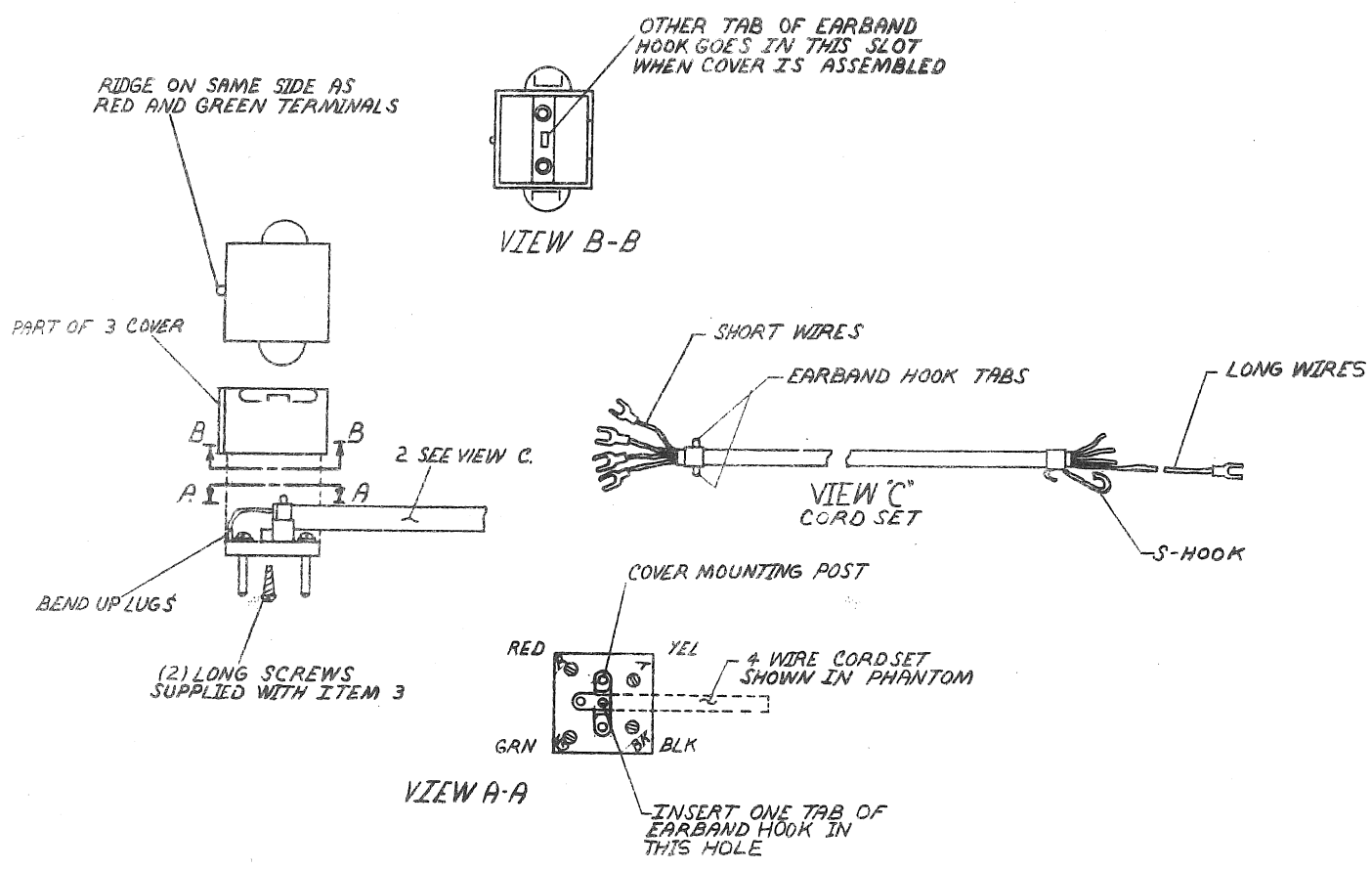
CORDSET WIRE	PLUG TERMINAL	SIGNAL
GREEN	GN	KEYBOARD +
RED	R	KEYBOARD -
BLACK	BK	PRINTER +
YELLOW	Y	PRINTER -

- B. BEND TERMINAL LUGS UP AND INSERT EARBAND HOOK TAB INTO CENTER HOLE OF PLUG (SEE VIEW A-A OF DETAIL "T")
 C. ARRANGE WIRES TO CLEAR COVER MOUNTING POSTS AND PLACE COVER ON PLUG WITH RIDGE BETWEEN "R" & GN TERMINALS
 D. INSERT AND TIGHTEN THE TWO LONG SCREWS SUPPLIED WITH THE PLUG (DISCARD THE SHORT SCREW ALSO SUPPLIED)
 E. WIRE THE LONG WIRE END OF THE CORDSET ITEM #2 TO THE LINE TERMINAL STRIP (DETAIL "M") AS FOLLOWS
- | | |
|--------|---------|
| GREEN | TERM #3 |
| RED | TERM #4 |
| BLACK | TERM #7 |
| YELLOW | TERM #6 |
- F. PLACE S-HOOK UNDER SCREW NEAR LINE TERMINAL STRIP TO STRAIN RELIEVE CORDSET.
 G. AFTER TESTING INSERT TELEPHONE PLUG ITEM #3 INTO TELEPHONE JACK ITEM #4 AND PACK SO THAT THE JACK CAN NOT BE DISLODGED.

REVISIONS		
CHK	CHANGE NO	REV

"THIS DRAWING AND SPECIFICATIONS HEREIN ARE THE PROPERTY OF DIGITAL EQUIPMENT CORPORATION AND SHALL NOT BE REPRODUCED OR COPIED OR USED IN WHOLE OR IN PART AS THE BASIS FOR THE MANUFACTURE OR SALE OF ITEMS WITHOUT WRITTEN PERMISSION. COPYRIGHT © 1973, DIGITAL EQUIPMENT CORPORATION"

PROCEDURE XIV
 INSTALLATION ON STAND WHEN INSTALLING ON STAND (AFTER SHIPMENT.)
 A. FOLLOW UNPACKING "PREPARATION FOR INSTALLATION, MOUNTING TYPING UNIT ON STAND" AND "FINAL ASSEMBLY" PORTIONS OF SECT 574-100-201 TC I SS.5)
 B. CONNECT GREEN WIRE SUPPLIED BETWEEN SUB-BASE AND STAND FRAME GROUND TERMINALS.



REVISIONS		
CHK	CHANGE NO.	REV.

TITLE	SET UP & REWORK PROCEDURE	SIZE CODE	DUA	NUMBER	LT33-0-0	REV.	A
SCALE	NONE	SHEET	8	OF	8	DIST.	

REV. A
 DUA LT33-0-0
 B
 A

DIGITAL EQUIPMENT CORPORATION
MAYNARD, MASSACHUSETTS

LEGEND

QUANTITY/VARIATION

ACCESSORY LIST

MADE BY J. CUDMORE	CHECKED PFYFFER	SECTION
DATE 7/21/69	DATE 7/25/69	1
ENG <i>M. [Signature]</i>	PROD <i>M. [Signature]</i>	ISSUED SECT.
DATE 7/28/69	DATE 7/28/69	1

D DOCUMENT
DN DOCUMENT CHANGE NOTICE
PA PAPER TAPE ASCII
PB PAPER TAPE BINARY
PM PAPER TAPE READ-IN-MODE

ITEM NO.	DWG NO. / PART NO.	DESCRIPTION	QUANTITY/VARIATION					KIT CHECK	BY	DATE	INSTALLATION CHECK	
			LT33-B, -D, -E, -F, -H, TYPES	LT33-AA, -AB, -CA, -CB, -CC, -CD, -CE							BY	DATE
1	36-5360	ROLLS, ROLLED OILED PAPER TAPE	1									
2	36-5365	ROLL, TWO PAPER	1									
3	BULLETIN 273B	TTY MANUAL VOL #1 (VENDOR)	1									
4	BULLETIN 310	TTY MANUAL VOL #2 (VENDOR)	1									
5	BULLETIN 1184B	TTY MANUAL PARTS (VENDOR)	1									
6	18-9137	ROLL TTY RIBBON	1									

TITLE	ASSY. NO.	SIZE CODE	NUMBER	REV.	ECO NO
TELETYPE WRITERS LT33 SERIES		A AL	LT33-0-12	C	LT33-00009
SHEET 1 OF 1		DIST.			



This document contains confidential proprietary information of DEC. This information shall not be disclosed to persons outside the employ of DEC, except by DEC personnel so authorized by DEC, and only for use by such other persons in the design, production or manufacture of products for DEC. Copyright © Digital Equipment Corporation.

DIGITAL EQUIPMENT CORPORATION						
MAYNARD, MASSACHUSETTS						
ENGINEERING SPECIFICATION					DATE 5/3/68	
TITLE PACKING PROCEDURE FOR TELETYPE WRITERS LT33 SERIES						
REVISIONS						
REV	DESCRIPTION	CHG NO	ORIG	DATE	APPD BY	DATE
A	CHANGED ECO	LT33-00002	A KENT	7-6-71	A. KENT	7-26-71
B	ECO CHANGE	LT33-00009	A KENT	11-73	<i>Allan Kent</i>	<i>19 Feb 74</i>

DISREGARD READER AND PUNCH INSTRUCTIONS ON KSR UNITS.

1. Put reader clip in holder; reader pins in upward position as originally received.
2. Use one tie wrap to hold carriage at left margin.
3. Mount printer unit to fiberboard platform with the eight (8) mounting screws and three (3) studs, originally provided.
4. Put chad box and copy holder in the box provided. On units where reader power pack is not already mounted inside of Teletype, also place reader power pack in the box provided.
5. Teletypes should have transformer (if previously mounted) left in base stand.
6. The four (4) mounting screws that mount the printer to the base stand should be put in a bag along with the on/off knob and the platen knob and then tied to the base stand.
7. Teletype AC cable and signal cable should be placed on the plastic cover where paper roll normally goes and wrapped in kim pack.
8. Tape down printer cover, punch paper-roller, printer paper-roller and cables of item 7 above. Additional tape should be used to secure whole cover to base.
9. Make sure that there are three (3) thumbscrews that hold teletype cover on, and four (4) screws in the front of the machine, also a screw in reader cover and one (1) face-plate for each machine.

ENG K. E. FITZGERALD	APPD	SIZE A	CODE SP	NUMBER LT33-0-10	REV B
-------------------------	------	-----------	------------	---------------------	----------

This document contains confidential, proprietary information of DEC. This information shall not be disclosed to persons outside the employ of DEC, except by DEC personnel so authorized by DEC, and only for use by such other persons in the design, production or manufacture of products for DEC. Copyright © Digital Equipment Corporation.

DIGITAL EQUIPMENT CORPORATION MAYNARD, MASSACHUSETTS						
ENGINEERING SPECIFICATION					DATE 5/3/68	
TITLE INSTALLATION PROCEDURE FOR TELETYPE MODEL LT33 SERIES						
REVISIONS						
REV	DESCRIPTION	CHG NO	ORIG	DATE	APPD BY	DATE
A	CHANGED ECO	LT33-00002	A. KENT	7-6-71	A KENT	7-26-71
B	ECO CHANGE	LT33-00009	A. KENT	11-73	<i>Alan Kent</i>	19 Feb 74

DISREGARD READER AND PUNCH INSTRUCTIONS ON KSR UNITS.

1. Remove all tape holding covers and cables.
2. Remove the whole cover and in the reader, remove clip which holds reader pins in an upward position before turning machine on.
3. On units with reader power pack shipped separately in the box, mount power supply for reader on basic stand and plug connector cable in. (Other Teletypes have reader power pack already mounted inside in the machine.)
4. Remove tie wrap being used to hold carriage at left hand margin.
5. Mount base to bottom of unit with screws provided.
6. Replace cover being sure that three (3) thumbscrews, four (4) panhead screws and one (1) special screw (for reader) are correctly installed before attaching face plate and knobs.

ENG	APPD	SIZE	CODE	NUMBER	REV
K. E. FITZGERALD		A	SP	LT33-0-11	B

