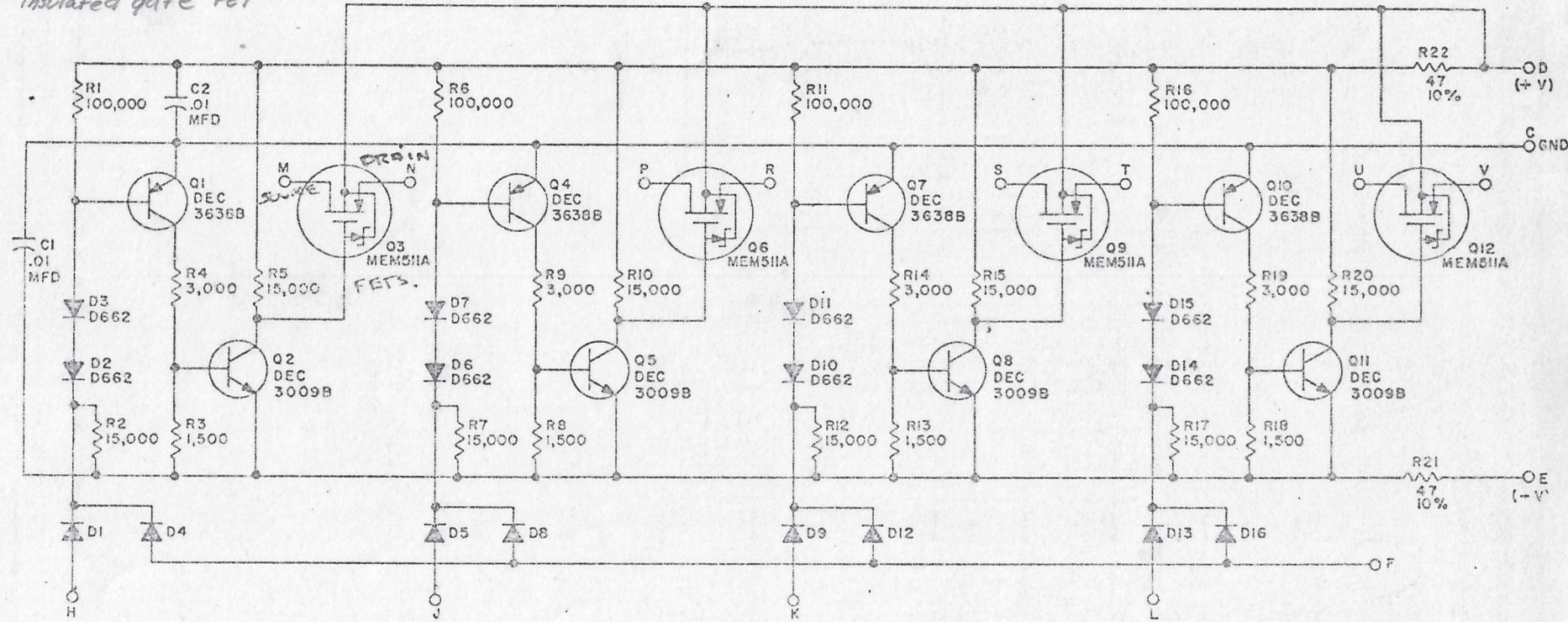


SIZE B CODE CS NUMBER A121-0-1 REV C

THIS SCHEMATIC IS FURNISHED ONLY FOR TEST AND MAINTENANCE PURPOSES. THE CIRCUITS ARE PROPRIETARY IN NATURE AND SHOULD BE TREATED ACCORDINGLY. COPYRIGHT 1966 BY DIGITAL EQUIPMENT CORPORATION

NEG LOGIC

Insulated gate FET



UNLESS OTHERWISE INDICATED:
RESISTORS ARE 1/4W; 5%
DIODES ARE D664

NOTES:
1. (-V) MUST BE BETWEEN -5 AND -20 AND AT LEAST 10 VOLTS MORE NEGATIVE THAN THE MOST NEGATIVE INPUT SIGNAL
2. (+V) MUST BE BETWEEN +5 AND +10 AND AT LEAST EQUAL TO OR GREATER THAN THE MOST POSITIVE INPUT SIGNAL

PARTS LIST A-PL-A121-0-0

<table border="1"> <tr><th>REV</th><th>CHK</th><th>ENG</th><th>NO</th></tr> <tr><td>A</td><td>6217</td><td>A</td><td></td></tr> <tr><td>B</td><td>5658</td><td>B</td><td></td></tr> <tr><td>C</td><td>7090</td><td>C</td><td></td></tr> </table>				REV	CHK	ENG	NO	A	6217	A		B	5658	B		C	7090	C		<table border="1"> <tr><th>REV</th><th>CHK</th><th>DATE</th><th>DATE</th></tr> <tr><td></td><td></td><td></td><td></td></tr> <tr><td></td><td></td><td></td><td></td></tr> <tr><td></td><td></td><td></td><td></td></tr> </table>				REV	CHK	DATE	DATE													<table border="1"> <tr><th colspan="4">TRANSISTOR & DIODE CONVERSION CHART</th></tr> <tr><th>DEC</th><th>EIA</th><th>DEC</th><th>EIA</th></tr> <tr><td>3009B</td><td>2N3009</td><td></td><td></td></tr> <tr><td>3638B</td><td>2N3638</td><td></td><td></td></tr> <tr><td>MEM511A</td><td>SAME</td><td></td><td></td></tr> <tr><td>D662</td><td>1N662</td><td></td><td></td></tr> <tr><td>D664</td><td>1N3606</td><td></td><td></td></tr> </table>				TRANSISTOR & DIODE CONVERSION CHART				DEC	EIA	DEC	EIA	3009B	2N3009			3638B	2N3638			MEM511A	SAME			D662	1N662			D664	1N3606			<table border="1"> <tr><th colspan="4">EQUIPMENT CORPORATION</th></tr> <tr><td colspan="4">WAYNARD, MASSACHUSETTS</td></tr> </table>				EQUIPMENT CORPORATION				WAYNARD, MASSACHUSETTS				<table border="1"> <tr><th colspan="4">TITLE</th></tr> <tr><td colspan="4">MULTIPLEXER SWITCH A121</td></tr> <tr><th>SIZE</th><th>CODE</th><th>NUMBER</th><th>REV</th></tr> <tr><td>B</td><td>CS</td><td>A121-0-1</td><td>C</td></tr> <tr><th colspan="3">PRINTED CIRCUIT REV</th><th></th></tr> <tr><td colspan="3">C</td><td></td></tr> </table>				TITLE				MULTIPLEXER SWITCH A121				SIZE	CODE	NUMBER	REV	B	CS	A121-0-1	C	PRINTED CIRCUIT REV				C			
REV	CHK	ENG	NO																																																																																																												
A	6217	A																																																																																																													
B	5658	B																																																																																																													
C	7090	C																																																																																																													
REV	CHK	DATE	DATE																																																																																																												
TRANSISTOR & DIODE CONVERSION CHART																																																																																																															
DEC	EIA	DEC	EIA																																																																																																												
3009B	2N3009																																																																																																														
3638B	2N3638																																																																																																														
MEM511A	SAME																																																																																																														
D662	1N662																																																																																																														
D664	1N3606																																																																																																														
EQUIPMENT CORPORATION																																																																																																															
WAYNARD, MASSACHUSETTS																																																																																																															
TITLE																																																																																																															
MULTIPLEXER SWITCH A121																																																																																																															
SIZE	CODE	NUMBER	REV																																																																																																												
B	CS	A121-0-1	C																																																																																																												
PRINTED CIRCUIT REV																																																																																																															
C																																																																																																															

A121