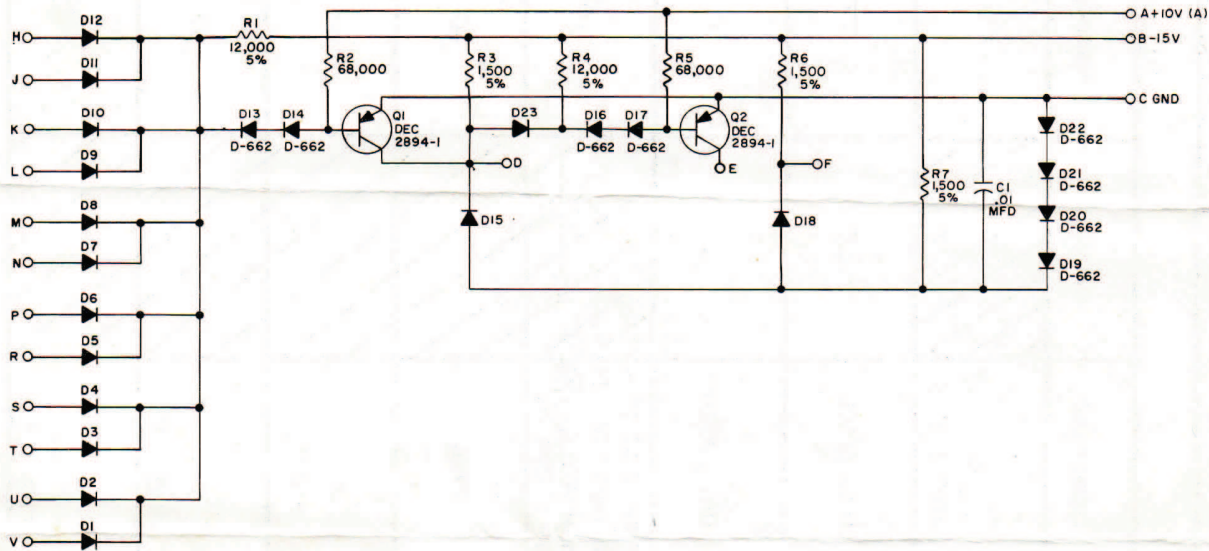


RS-B-B171-1



UNLESS OTHERWISE INDICATED;
 RESISTORS ARE 1/4W, 10%
 CAPACITORS ARE MMFD
 DIODES ARE D-664

TRANSISTOR & DIODE CONVERSION CHART	
DEC	EIA
DEC 2894-1	DEC 2894
D-622	IN645
D-664	IN3606

NOTES

THIS SCHEMATIC IS FURNISHED ONLY FOR TEST AND MAINTENANCE PURPOSES. THE CIRCUITS ARE PROPRIETARY IN NATURE AND SHOULD BE TREATED ACCORDINGLY.

COPYRIGHT 1964 BY DIGITAL EQUIPMENT CORPORATION

B	RS-B-171	I
DIODE GATE B171		

DIGITAL EQUIPMENT CORPORATION • MAYNARD, MASSACHUSETTS