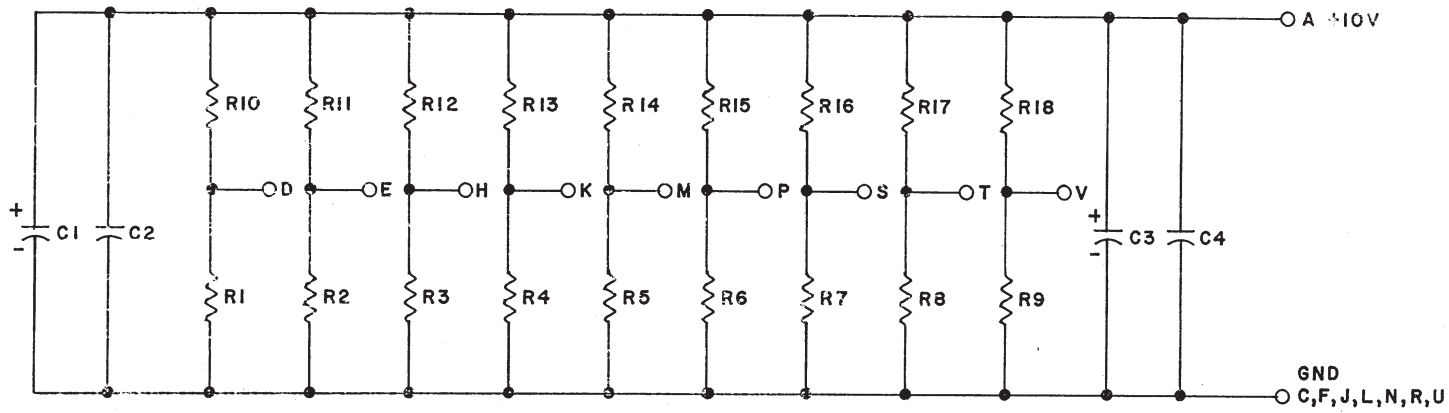


THIS SCHEMATIC IS FURNISHED ONLY FOR TEST AND MAINTENANCE PURPOSES. THE CIRCUITS ARE PROPRIETARY IN NATURE AND SHOULD BE TREATED ACCORDINGLY. COPYRIGHT 1968 BY DIGITAL EQUIPMENT CORPORATION



TEST PROCEDURE
 MEASURE VOLTAGE AT PINS D,E,H,K,M,P,S,T,V TO GND (+4V)

 A B C D E F G H I J K L M N P Q R S T U V

R10 - R18	RES. 270 1/2W 5% CC	1300285
R1 - R9	RES. 180 1/4W 5% CC	1301322
C2, C4	CAP. .01 MFD 100V 20% DISC	1001610
C1, C3	CAP. 3.9 MFD 10V 10%	1000064
REFERENCE DESIGNATION	DESCRIPTION	PART NO.
PARTS LIST		A-PL- G715-0-0

REVISIONS	CHK'G NO.	REV.
	100001	A
	S. B. Drew	
	J. DREW	

DRN.	M. Waller	DATE	8-12-68
CHK'D	M. Waller	DATE	8-14-68
ENG.	J. Drew	DATE	7-1-68
PROD.		DATE	

TRANSISTOR & DIODE CONVERSION CHART			
DEC	EIA	DEC	EIA

digital
 EQUIPMENT CORPORATION
 MAYNARD, MASSACHUSETTS

TITLE			
TERMINATOR G715			
SIZE	CODE	NUMBER	REV.
B	CS	G715-0-1	B
PRINTED CIRCUIT REV.			B