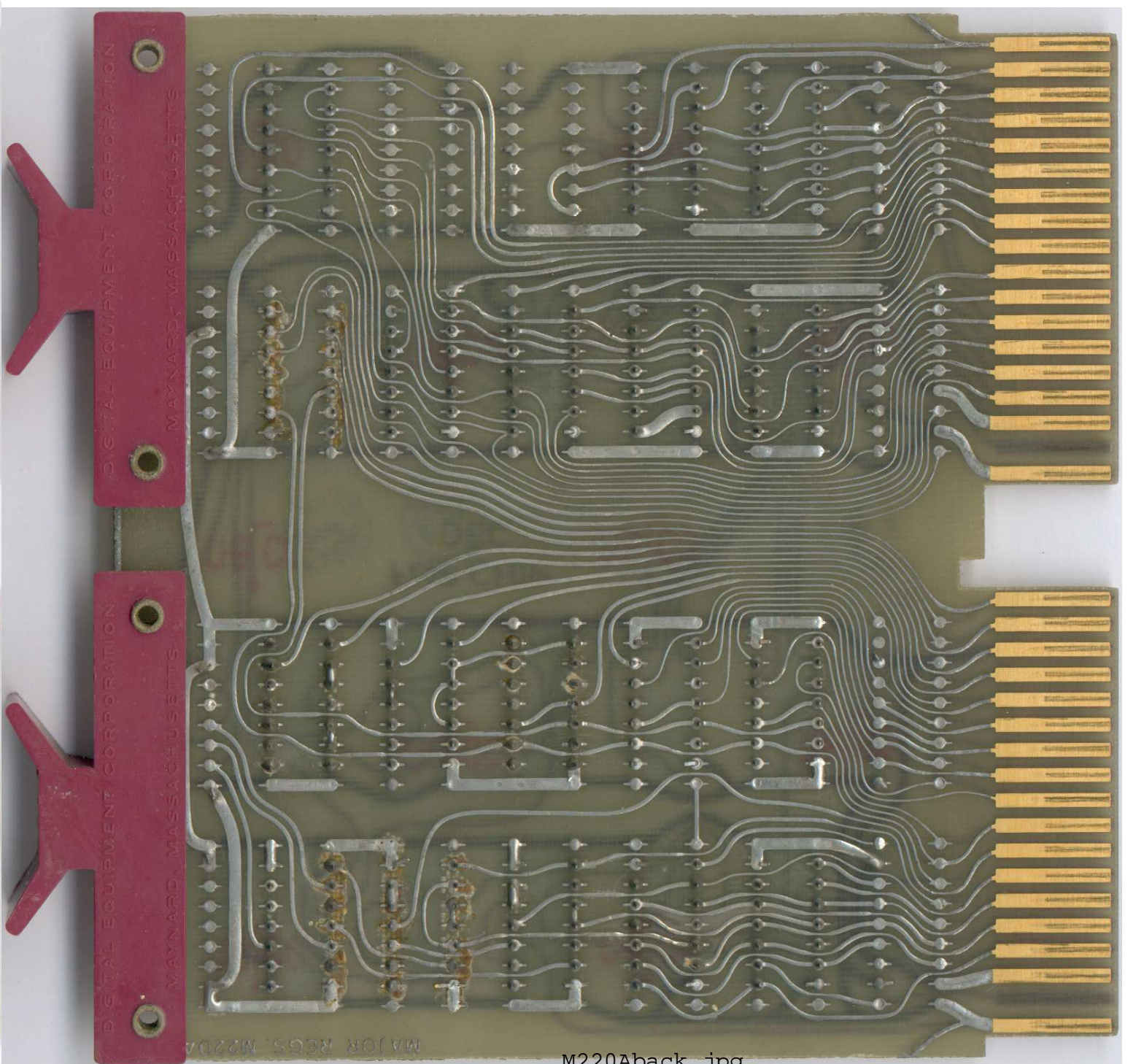
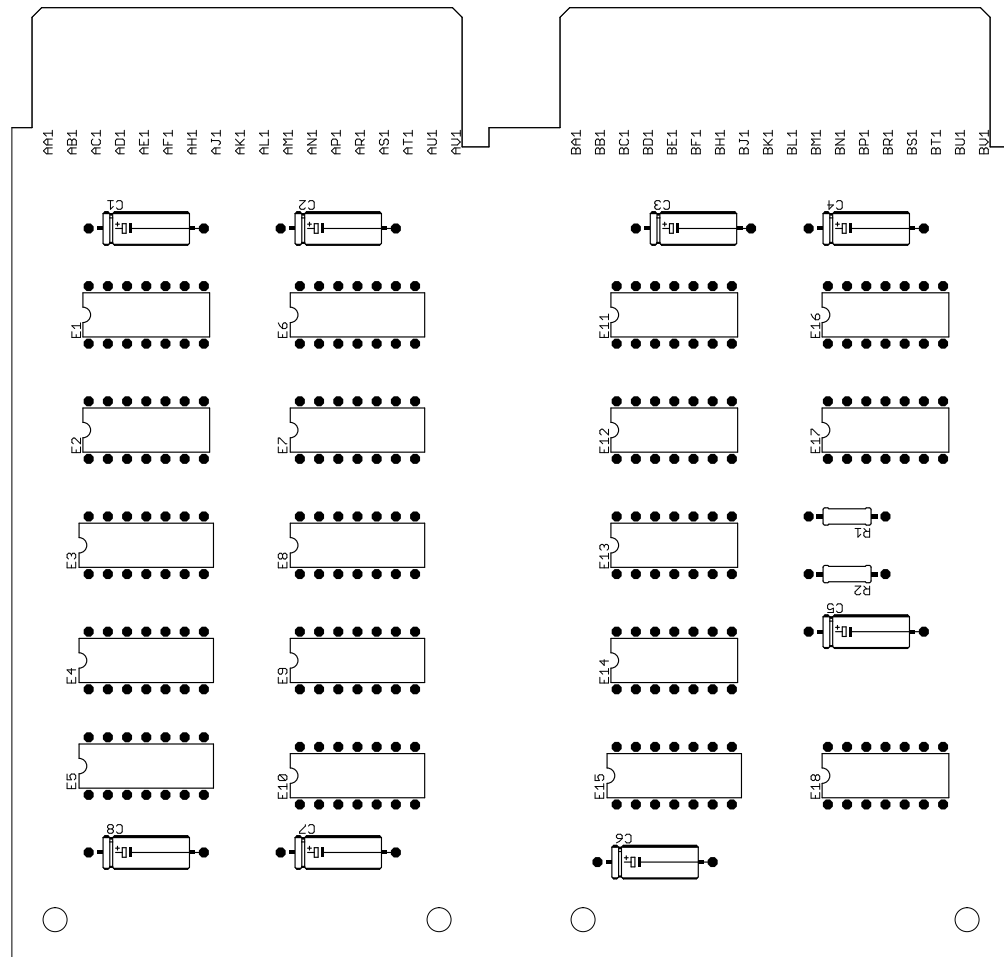


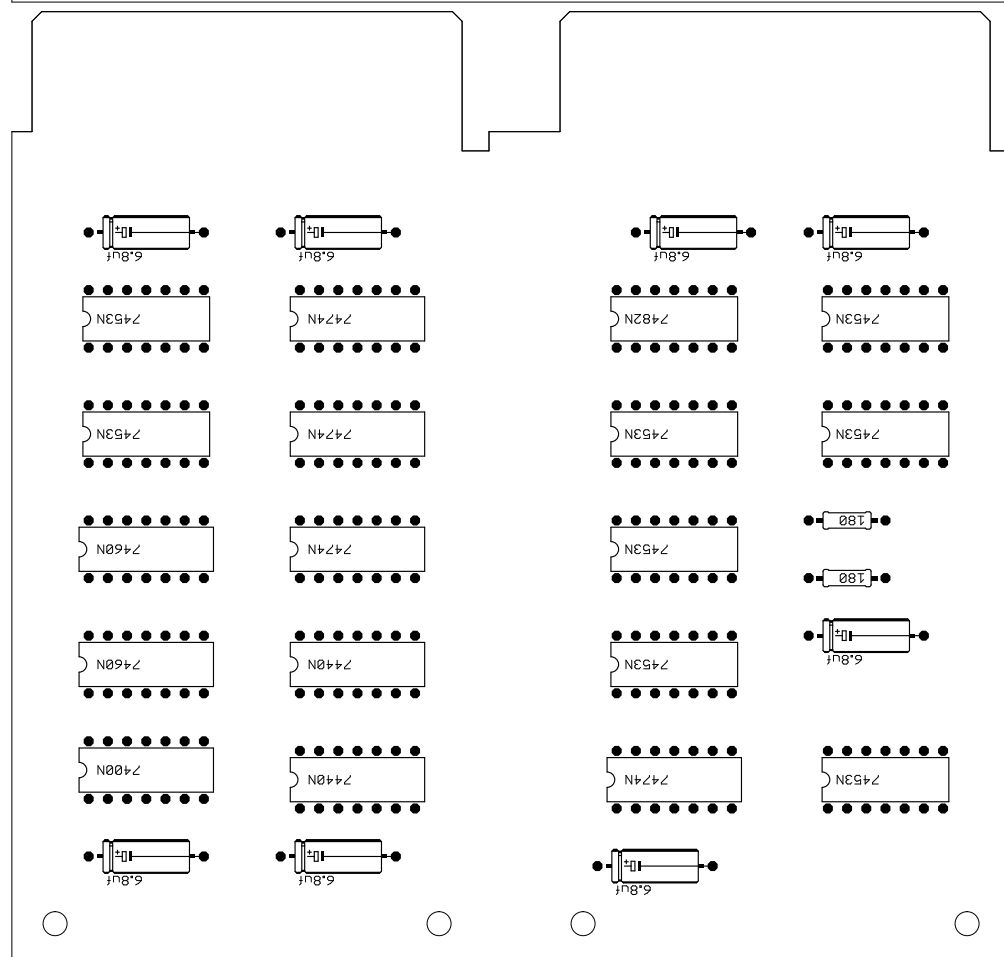
M220Afront.jpg



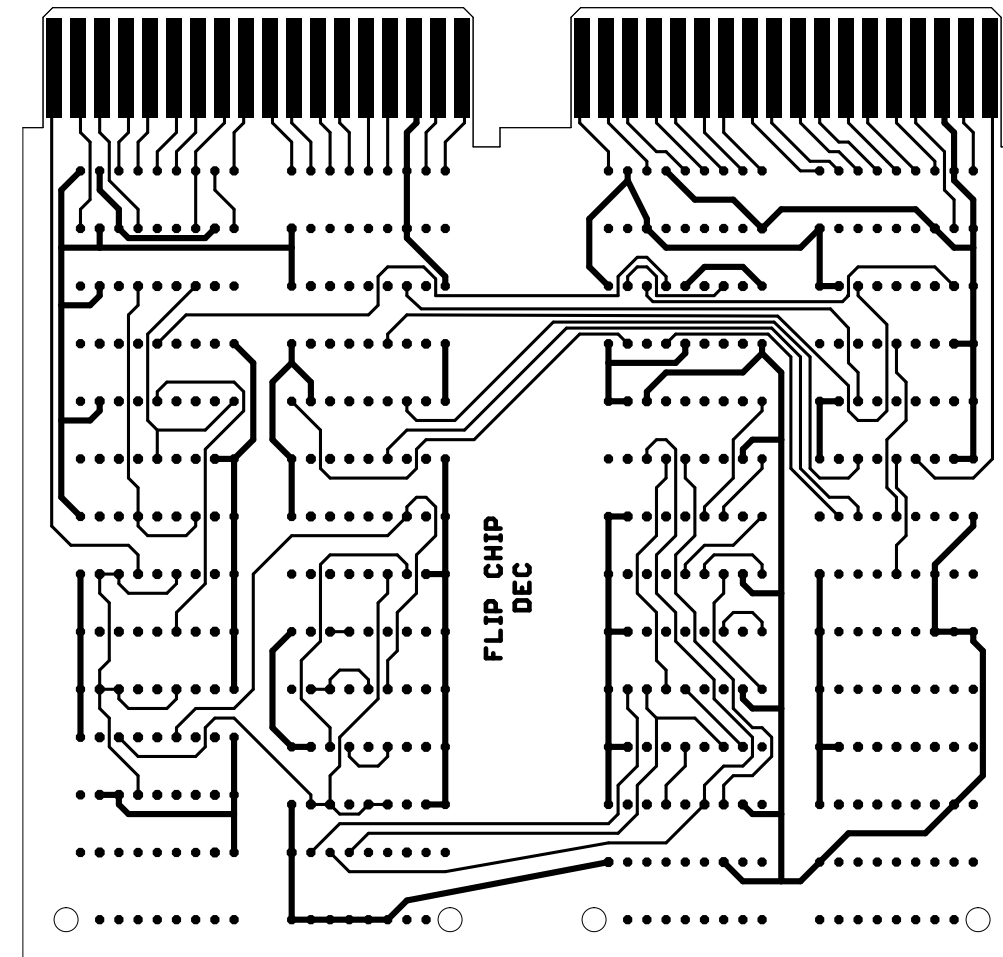
M220Aback.jpg



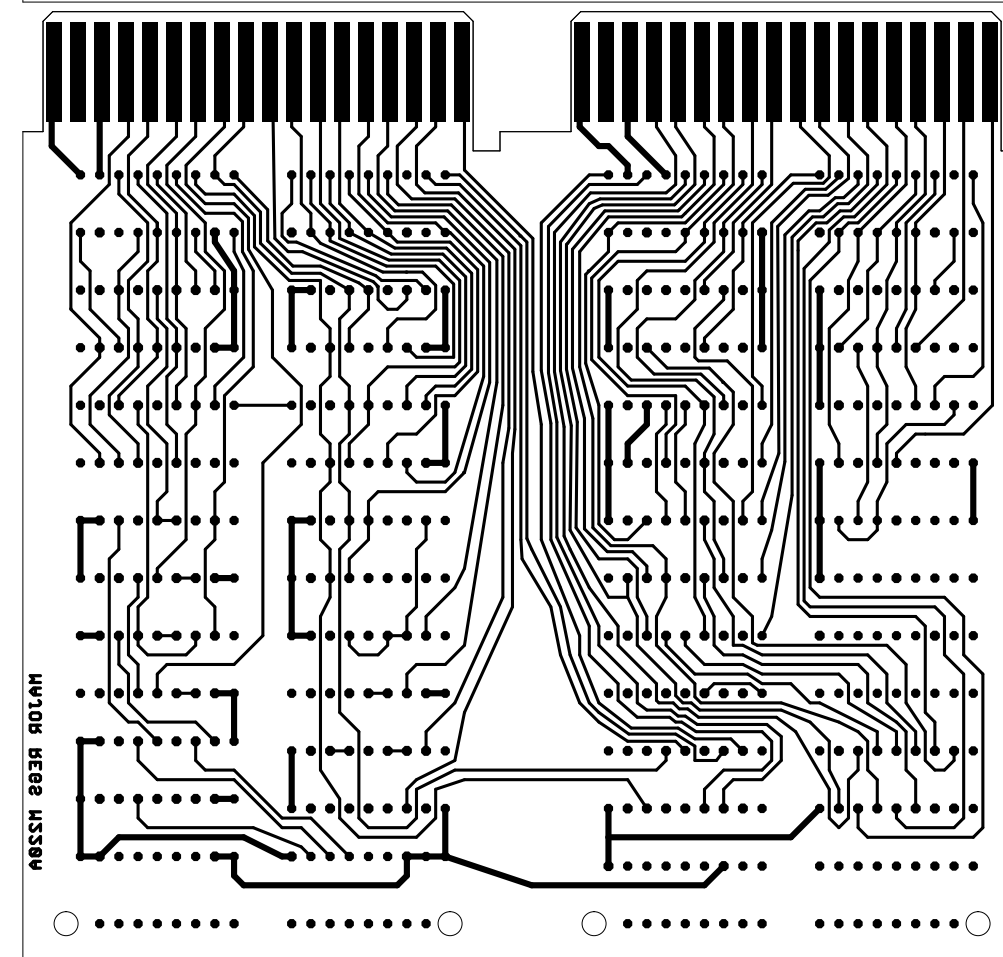
Component Names



Component Values



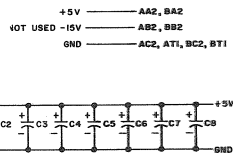
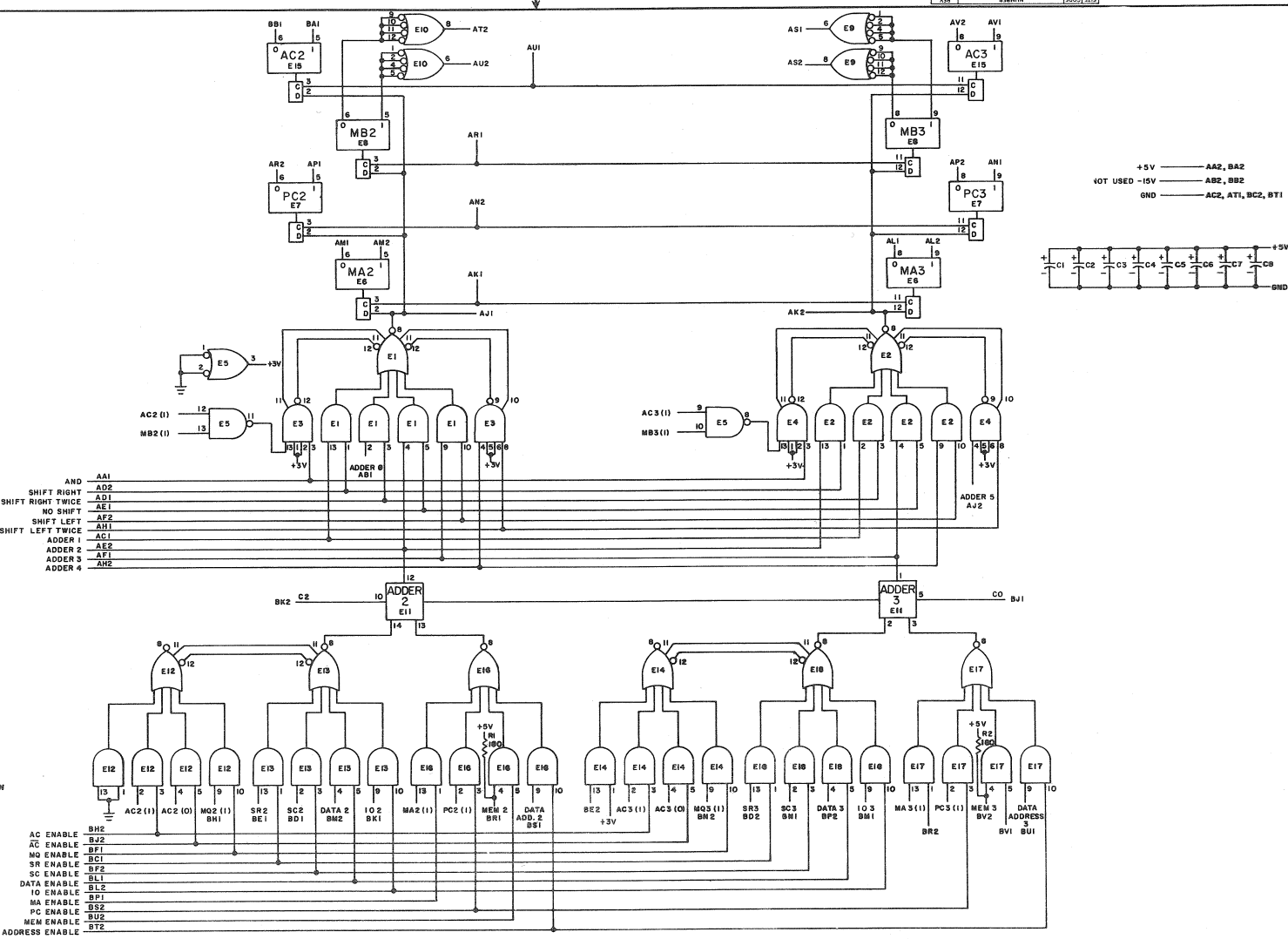
Component Side Etch



Solder Side Etch

THIS SCHEMATIC IS FURNISHED ONLY FOR TEST AND MAINTENANCE PURPOSES. THE CIRCUITS ARE PROPRIETARY IN NATURE AND SHOULD BE TREATED ACCORDINGLY. COPYRIGHT 1967 BY DIGITAL EQUIPMENT CORPORATION.

1-0-022M CS
 NUMBER 1000 225



UNLESS OTHERWISE INDICATED:
 E5, E7, E9, E16 ARE DEC7474W
 E5 IS DEC7400N
 E3 & E4 ARE DEC7460N
 E1, E2, E10, E13, E14, E16, E17, E18 ARE DEC7455M
 E11 IS DEC7482N
 PIN 7 ON EACH IC EXCEPT E10 = GND
 PIN 11 ON E10 = +5V
 PIN 14 ON EACH IC EXCEPT E10 = +5V
 PIN 4 ON E10 = +5V
 RESISTORS ARE 1/4W; 10%
 CAPACITORS ARE 0.01 MFD, 35V, 20%

- AC ENABLE BH2
- AD ENABLE BJ2
- MA ENABLE BK2
- PC ENABLE BL2
- MEM ENABLE BM2
- DATA ADDRESS BN2
- SR ENABLE DC1
- SC ENABLE DF2
- DATA ENABLE DL2
- IO ENABLE DP1
- MA ENABLE DS2
- PC ENABLE DT2
- MEM ENABLE DU2
- DATA ADDRESS DV2

REV. 1
 NUMBER 1000
 CS M220-0-1

REVISIONS	DATE	BY	CHKD	DATE	BY	CHKD	DATE
	3-15-67	W. J.

TRANSISTOR & DIODE CONVERSION CHART			
DEC	EIA	DEC	EIA

		TITLE MAJOR REGISTERS M220	
CORPORATION BATHURST, MASSACHUSETTS	SIZE D	NUMBER CS M220-0-1	REV. 1A