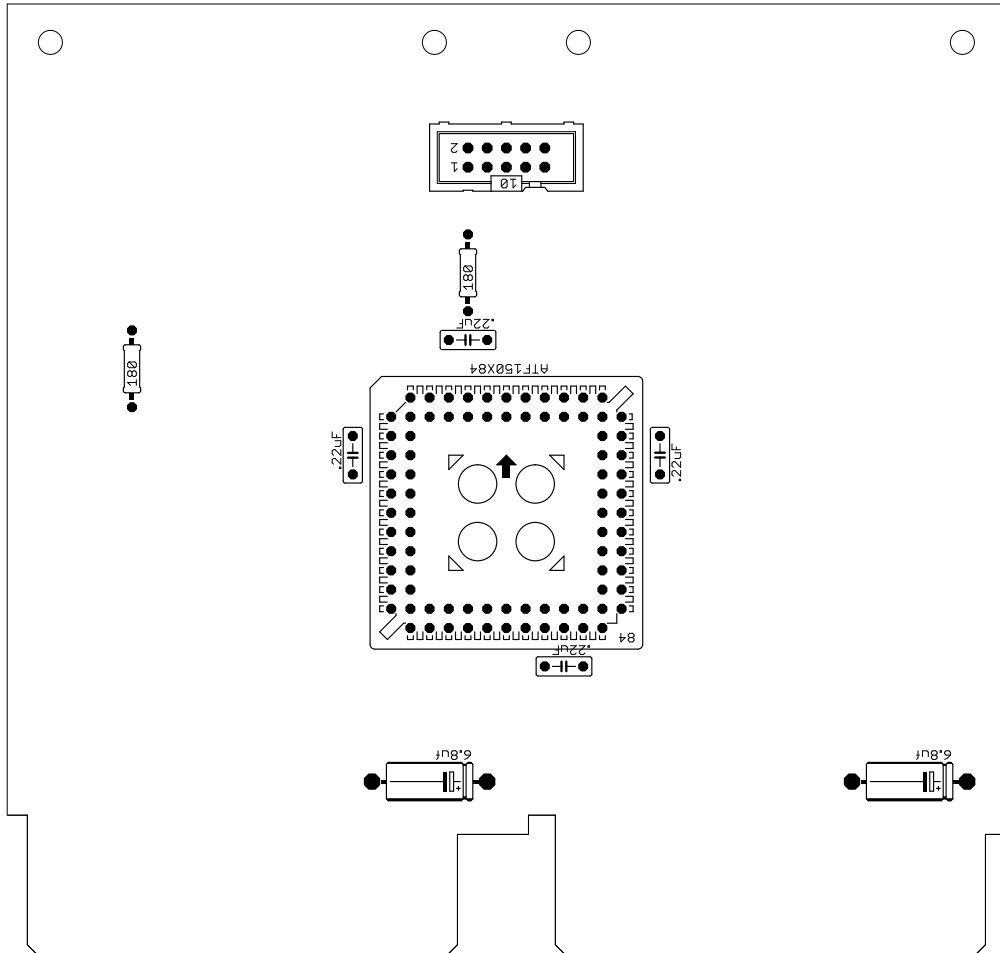
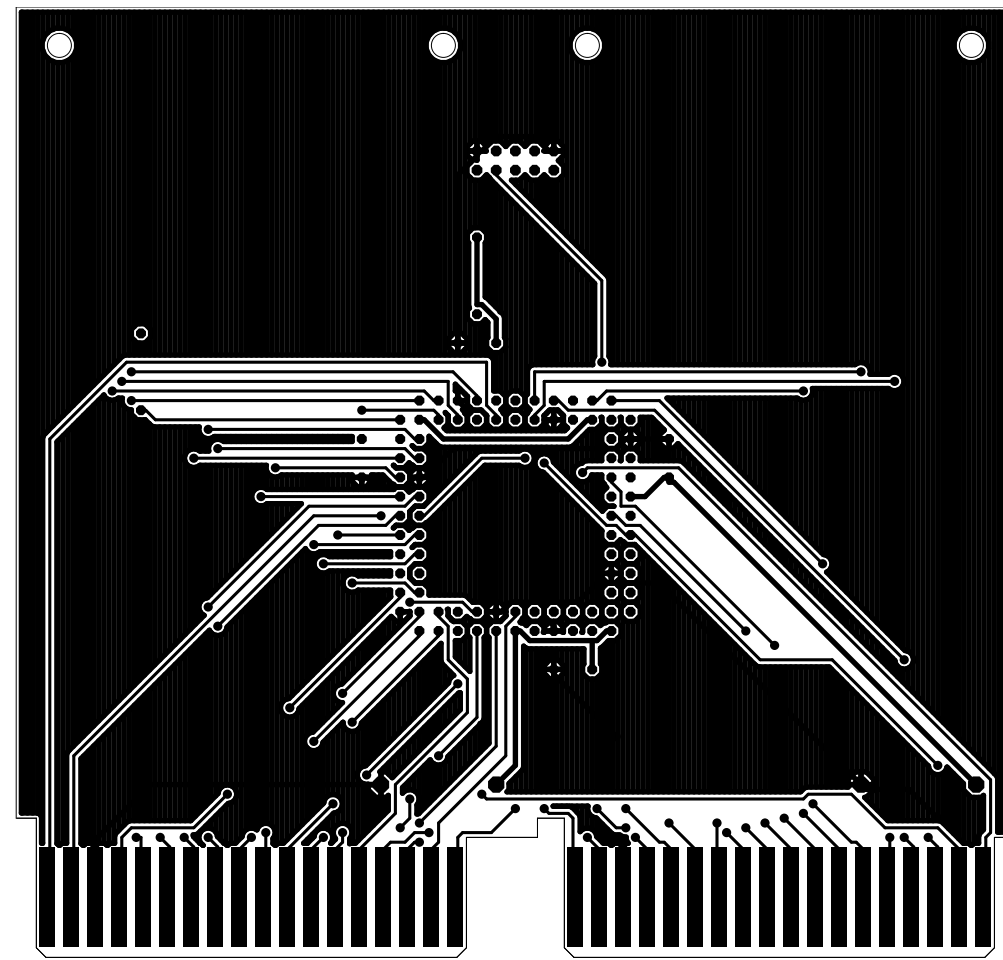


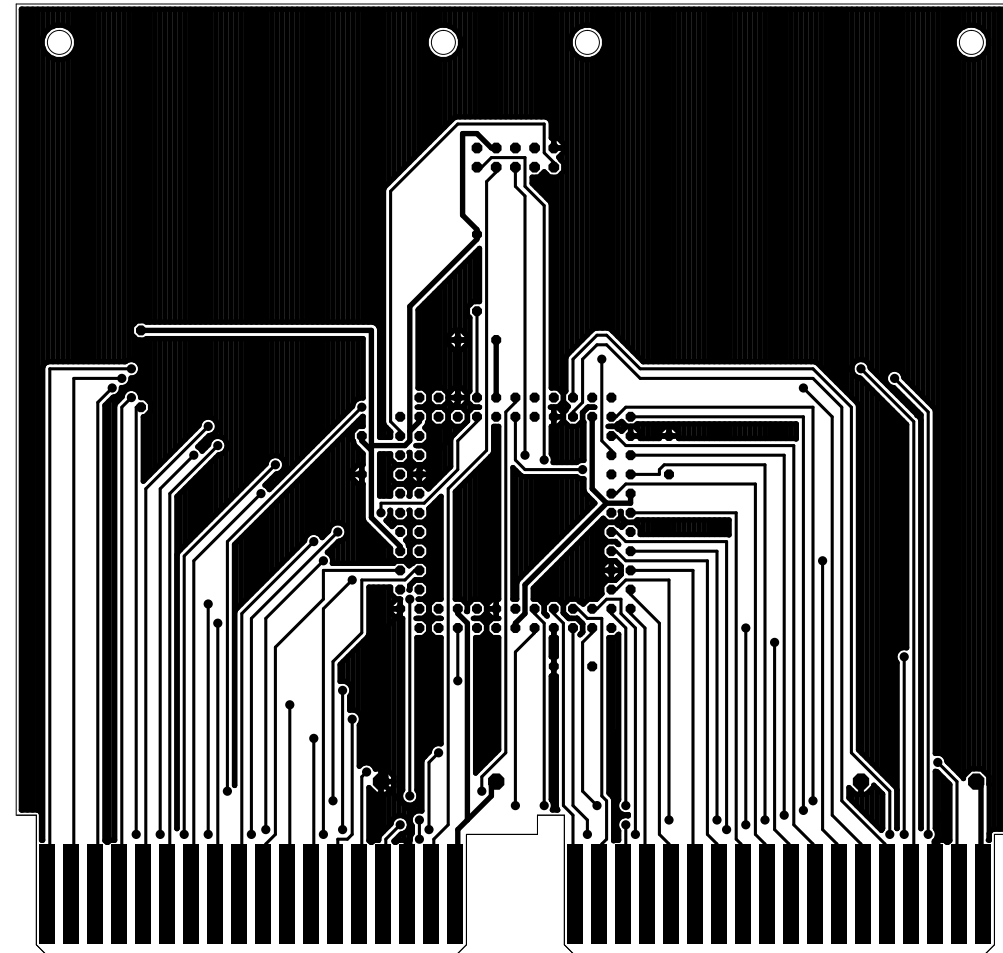
Component Names



Component Values



Component Side Etch

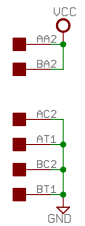
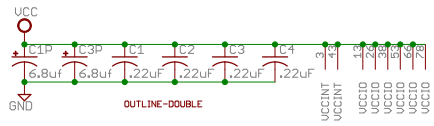
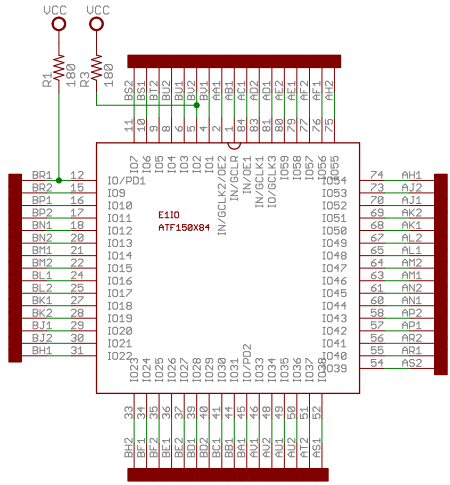
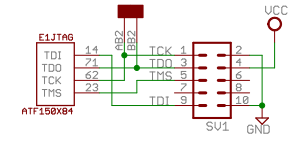


Solder Side Etch

M220 has 21 outputs:

- AE2 AR2
- AF1 AS1
- AJ1 AS2
- AK2 AT2
- AL1 AU2
- AL2 AV1
- AM1 AV2
- AM2 BA1
- AN1 BB1
- AP1 BK2
- AP2

TI\_SHIFT not implemented -- no pins left.  
(use JTAG pins?)



PAL Based Version of M220A/B	
TITLE: M220at	
Document Number:	REV:
Date: 2/20/2016 10:26:08 AM	Sheet: 1/1