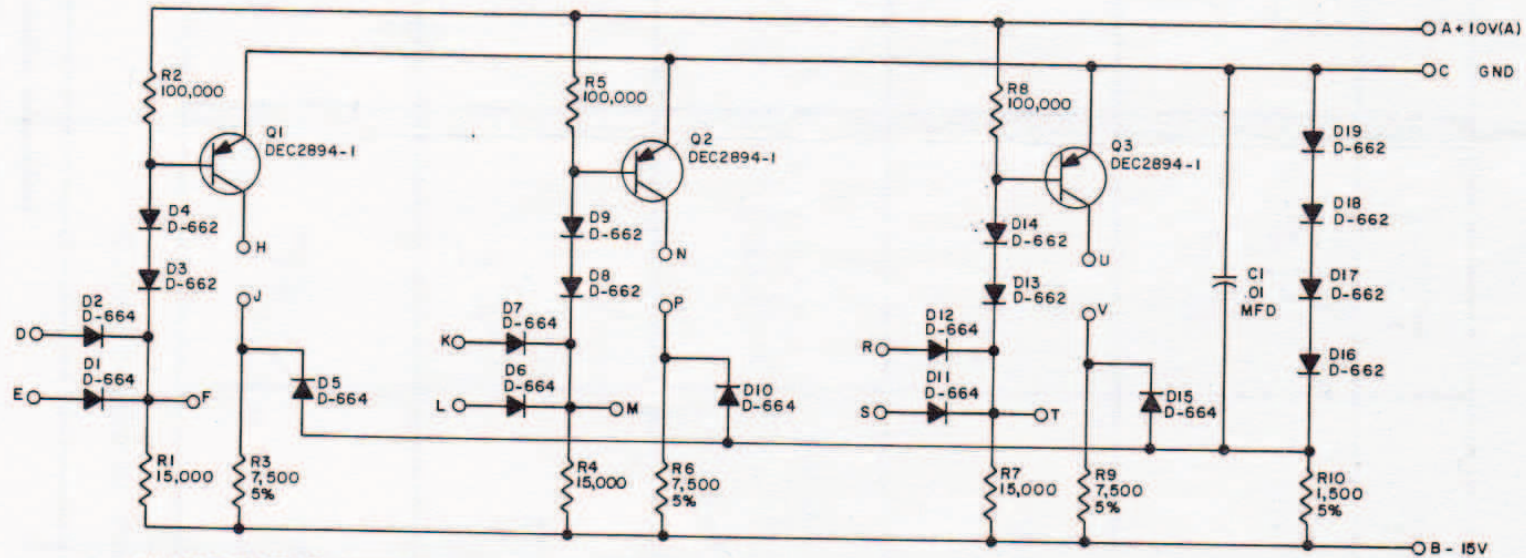


RS-B-R111



UNLESS OTHERWISE INDICATED:  
RESISTORS ARE 1/4W; 10%

TRANSISTOR & DIODE CONVERSION CHART			
DEC	EIA	DEC	EIA
DEC2894-1	DEC2894		
D-662	1N646		
D-664	1N3605		

NOTES

THIS SCHEMATIC IS FURNISHED ONLY FOR TEST AND MAINTENANCE PURPOSES. THE CIRCUITS ARE PROPRIETARY IN NATURE AND SHOULD BE TREATED ACCORDINGLY.

COPYRIGHT 1964 BY DIGITAL EQUIPMENT CORPORATION

A	RS-B-R111
DIODE GATE R111	