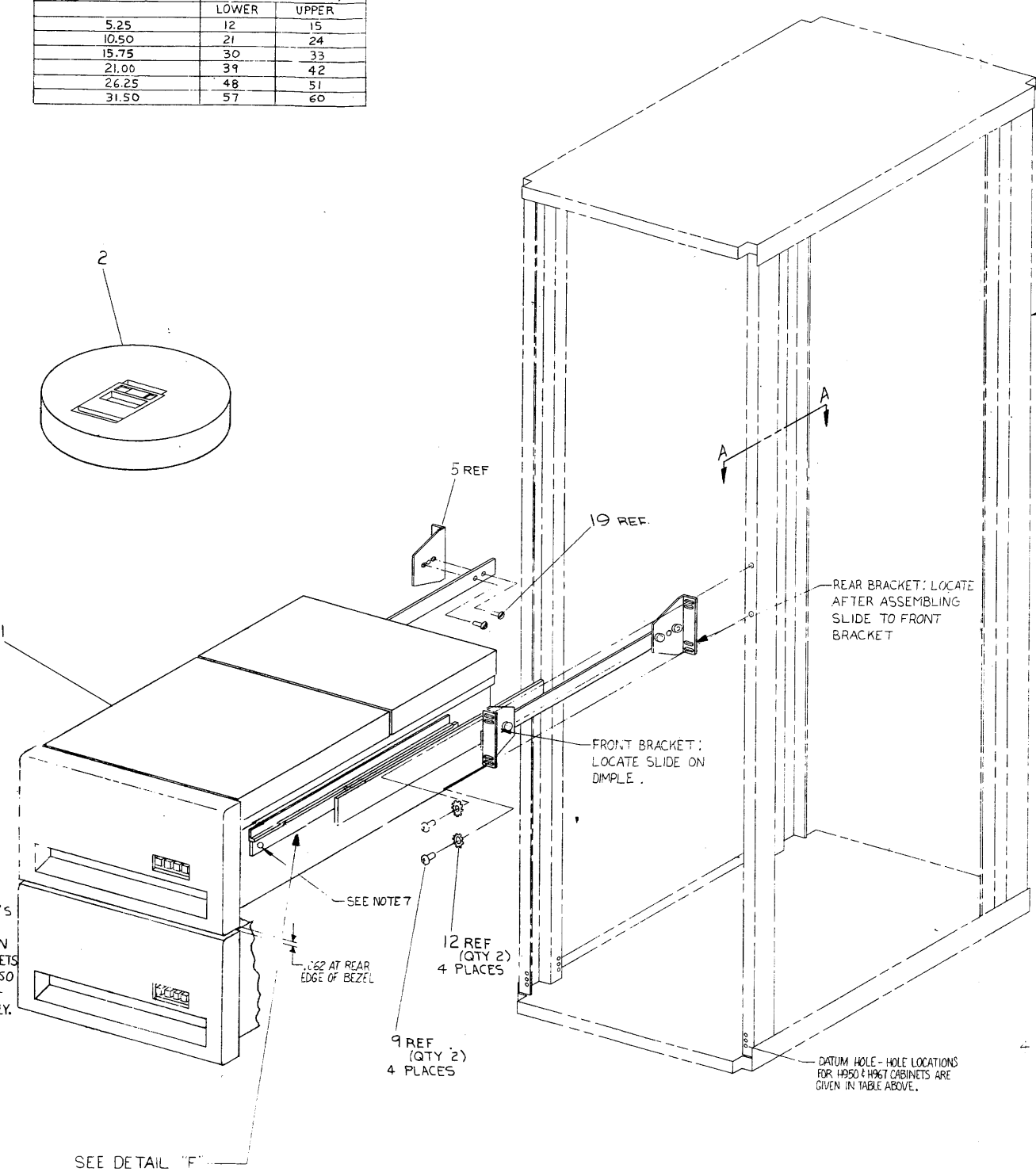
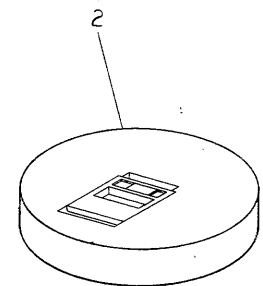




THIS DRAWING AND SPECIFICATIONS, FEDERAL ARE THE PROPERTY OF DIGITAL EQUIPMENT CORPORATION AND SHALL NOT BE REPRODUCED OR COPIED IN WHOLE OR IN PART OR THE BASIS FOR THE MANUFACTURE OR SALE OF ITEMS WITHOUT WRITTEN PERMISSION. COPYRIGHT © 1976 DIGITAL EQUIPMENT CORPORATION

HOLE LOCATIONS FOR MOUNTING IN H950 AND H967 CABINETS

AVAILABLE SPACE DEPTH RLØ2	MOUNTING HOLES (FROM DATUM HOLE)	
	LOWER	UPPER
5.25	12	15
10.50	21	24
15.75	30	33
21.00	39	42
26.25	48	51
31.50	57	60



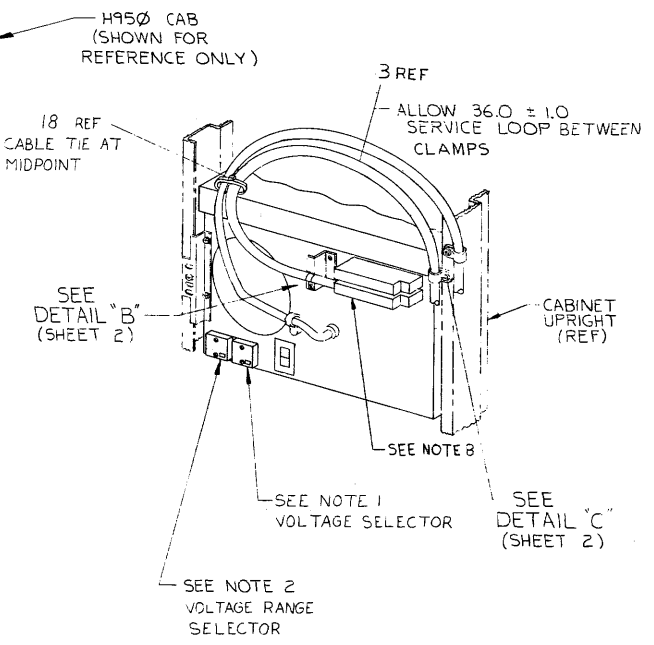
WHEN TWO RLØ2'S ARE MOUNTED IN A CABINET THE POSITION OF THE SLIDE BRACKETS MUST BE ADJUSTED SO THAT THE BEZELS ARE PARALLEL AND ALIGNED VERTICALLY.

SEE DETAIL "F" (SHEET 4)

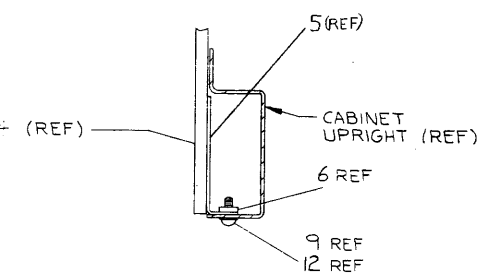
RLØ2-AK (SHOWN IN A H95Ø CAB)

- 7.CONT  
D. SECURE DRIVE TO SLIDES USING SCREWS SUPPLIED. (SEE DETAIL "F", SHEET 4)  
TO REMOVE DRIVE, EXTEND SLIDES FULLY, REMOVE SCREWS, RELEASE LATCHES AND LIFT OFF.
8. FOR THE LAST DRIVE IN A SYSTEM, I/O CABLE PLUGS INTO EITHER SOCKET. TERMINATOR (SUPPLIED WITH CONTROLLER) PLUGS INTO THE OTHER.  
NOTES CONT. ON SH. 2

- NOTES:  
1. MACHINES ARE SHIPPED CONFIGURED FOR 110 V, AND NOMINAL VOLTAGE RANGE. FOR 220 V OPERATION REMOVE TWO SCREWS FROM "VOLTAGE SELECTOR" COVER WITHDRAW THE COVER, AND REINSERT TURNED UPSIDE DOWN. AFTER INSERTION, 220 MUST BE SHOWING THRU THE SMALL WINDOW. REPLACE THE TWO SCREWS, CUT OFF 110V PLUG ON THE POWER CORD, REPLACE BY 220 V PLUG (ITEM #20). FOR COLOR CODE SEE DETAIL "G", SHEET 4.
2. "LOW LINE" AND "NOMINAL LINE" ARE DEFINED ON COVER OF "VOLTAGE RANGE SELECTOR" FOR LOW LINE VOLTAGE OPERATION REMOVE TWO SCREWS FROM "VOLTAGE RANGE SELECTOR" COVER, WITHDRAW THE COVER AND RE-INSERT IT TURNED UPSIDE DOWN. AFTER INSERTION, "LOW" MUST BE SHOWING THRU THE SMALL WINDOW. REPLACE THE TWO SCREWS.
3. WHEN AN RLØ2-AK IS ORDERED IN CONJUNCTION WITH H9500, H9501, H9502, H9503, H9600, H9601, H9602, H9603 INTERLOCK KIT(S) (REF 21) OR CABLE RESTRAINT SYSTEM(S) (REF 22) MUST BE ORDERED AND INSTALLED.
4. WHEN AN RLØ2-AK IS ORDERED IN CONJUNCTION WITH A H95Ø3/H96Ø3 THE TRIM PIECES (H9514-B) MUST BE ORDERED.
5. WHEN AN RLØ2-AK IS ORDERED IN CONJUNCTION WITH A H95Ø1/H96Ø1 TRIM PIECES (H9514-A) MUST BE ORDERED.



REAR VIEW OF RLØ2-AK DISK DRIVE (ITEM 1) TYPICAL FOR ALL CABS NOTE 11



SECTION A-A (SHOWING TYPICAL MOUNTING OF CHASSIS SLIDES TO CABINET UPRIGHTS) SCALE: NONE

6. TO ATTACH SHIPPING BRACKET (ITEM 7) REMOVE TWO SCREWS AND TWO LOCKWASHERS FROM ONE SIDE OF THE POWER PANEL ON THE REAR OF DISK DRIVE (ITEM 1), POSITION A SHIPPING BRACKET TO DETERMINE LOCATION OF "U" NUT (ITEM 13) AND ATTACH BRACKET USING ORIGINAL SCREWS AND LOCKWASHERS AND ITEMS 12 AND 9 (AS SHOWN IN DETAIL "D") BRACKET MAY BE ATTACHED TO EITHER SIDE OF UNIT.
7. TO MOUNT RLØ2 IN CABINET:  
A. MOUNT BRACKETS AND SLIDES TO UPRIGHTS.  
B. EXTEND SLIDES AS FAR AS POSSIBLE BY RELEASING CATCHES. (SEE DETAIL "F" SHT 4)  
C. PLACE DRIVE ON SLIDES AND PUSH BACK UNTIL ENDS OF RAILS FIT UNDER TAB ON SLIDES AND LATCHES ENGAGE.

CAUTION: OFF SHEET PARTS LIST EXISTS. SEE K-PL-RLØ2-AK-DBP (Z0848).

REV.	DATE	BY	CHKD.	DESCRIPTION
1		B. MILLER	B. MILLER	REVISED TO SHOW H950 & H967 CABINETS
2		B. MILLER	B. MILLER	REVISED TO SHOW H950 & H967 CABINETS
3		B. MILLER	B. MILLER	REVISED TO SHOW H950 & H967 CABINETS
4		B. MILLER	B. MILLER	REVISED TO SHOW H950 & H967 CABINETS
5		B. MILLER	B. MILLER	REVISED TO SHOW H950 & H967 CABINETS
6		B. MILLER	B. MILLER	REVISED TO SHOW H950 & H967 CABINETS
7		B. MILLER	B. MILLER	REVISED TO SHOW H950 & H967 CABINETS
8		B. MILLER	B. MILLER	REVISED TO SHOW H950 & H967 CABINETS

THIRD ANGLE PROJECTION		DESCRIPTION		DWG. PART NO.	ITEM NO.
UNLESS OTHERWISE SPECIFIED DIMENSIONS ARE IN INCHES					
ANGLES		CLASS OF ACCURACY		NOMINAL DIMENSION RANGE INCHES	
90° ± 0.01		FRACTIONAL		0.00	0.00
SURFACE QUALITY		CHECK ONE		0.00	0.00
FINISH		MEDIUM		0.00	0.00
QUANTITY & VARIATION		MICRONS		0.00	0.00
PREFERRED		0.00		0.00	0.00
FIRST USED ON		RLØ2		digital	
TITLE		DISK DRIVE MTG. KIT & CARTRIDGE			
MATERIAL		B-DD-RLØ2-AK		SIZE CODE NUMBER	
SCALE		E UA		RLØ2-AK-Ø	
FINISH		SHEET		OF 4	

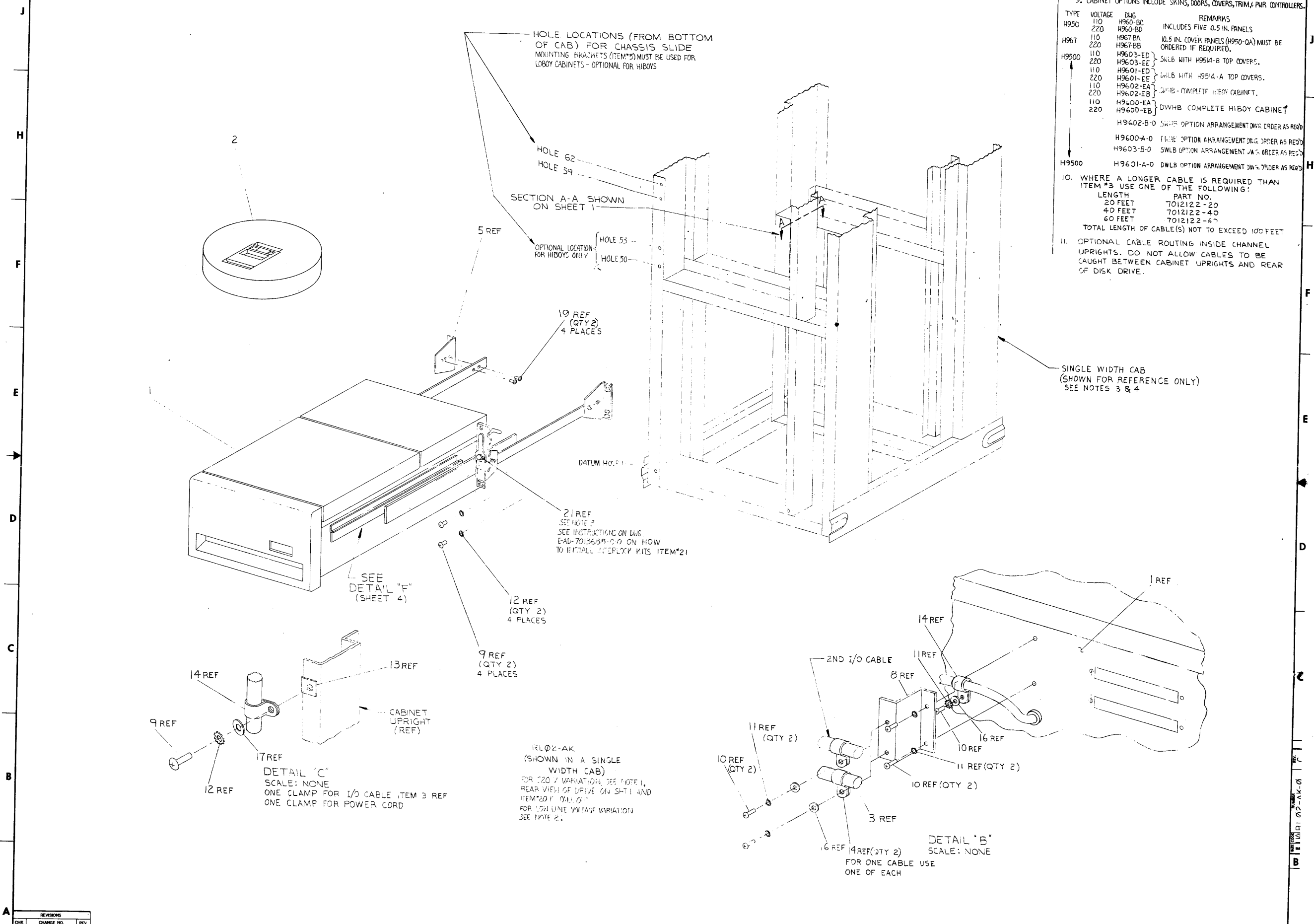
THIS DRAWING AND SPECIFICATIONS, HEREIN ARE THE PROPERTY OF DIGITAL EQUIPMENT CORPORATION AND SHALL NOT BE REPRODUCED OR COPIED OR USED IN WHOLE OR IN PART AS THE BASIS FOR THE MANUFACTURE OR SALE OF ITEMS WITHOUT WRITTEN PERMISSION.  
COPYRIGHT © 1978 DIGITAL EQUIPMENT CORPORATION

NOTES: (CONT.)

9. CABINET OPTIONS INCLUDE SKINS, DOORS, COVERS, TRIM, & PWR CONTROLLERS.

TYPE	VOLTAGE	DWG	REMARKS
H950	110	H960-BC	INCLUDES FIVE 10.5 IN. PANELS
	220	H960-BD	
H967	110	H967-BA	10.5 IN. COVER PANELS (H950-0A) MUST BE ORDERED IF REQUIRED.
	220	H967-BB	
H9500	110	H9603-ED	SWLB WITH H9514-B TOP COVERS.
	220	H9603-EE	
	110	H9601-ED	DWLB WITH H9514-A TOP COVERS.
	220	H9601-EE	
	110	H9602-EA	DWLB - COMPLETE HI-BOY CABINET.
	220	H9602-EB	
	110	H9600-EA	DWLB - COMPLETE HI-BOY CABINET
	220	H9600-EB	
		H9602-B-D	SWLB OPTION ARRANGEMENT DWG ORDER AS REQ'D
		H9600-A-D	DWLB OPTION ARRANGEMENT DWG ORDER AS REQ'D
		H9603-B-D	SWLB OPTION ARRANGEMENT DWG ORDER AS REQ'D
H9500		H9601-A-D	DWLB OPTION ARRANGEMENT DWG ORDER AS REQ'D

10. WHERE A LONGER CABLE IS REQUIRED THAN ITEM #3 USE ONE OF THE FOLLOWING:
- | LENGTH  | PART NO.   |
|---------|------------|
| 20 FEET | 7012122-20 |
| 40 FEET | 7012122-40 |
| 60 FEET | 7012122-60 |
- TOTAL LENGTH OF CABLE(S) NOT TO EXCEED 100 FEET
11. OPTIONAL CABLE ROUTING INSIDE CHANNEL UPRIGHTS. DO NOT ALLOW CABLES TO BE CAUGHT BETWEEN CABINET UPRIGHTS AND REAR OF DISK DRIVE.



HOLE LOCATIONS (FROM BOTTOM OF CAB) FOR CHASSIS SLIDE MOUNTING BRACKETS (ITEM\*5) MUST BE USED FOR LOBBY CABINETS - OPTIONAL FOR HI-BOYS

HOLE 62  
HOLE 59

SECTION A-A SHOWN ON SHEET 1

5 REF  
OPTIONAL LOCATION FOR HI-BOYS ONLY  
HOLE 53  
HOLE 50

19 REF (QTY 2)  
4 PLACES

DATUM HO. 1

21 REF  
SEE NOTE 2  
SEE INSTRUCTIONS ON DWG EAD-7013689-00 ON HOW TO INSTALL INTERLOCK KITS ITEM\*21

SEE DETAIL "F" (SHEET 4)

12 REF (QTY 2)  
4 PLACES

9 REF (QTY 2)  
4 PLACES

CABINET UPRIGHT (REF)

17 REF  
DETAIL "C"  
SCALE: NONE  
ONE CLAMP FOR I/O CABLE ITEM 3 REF  
ONE CLAMP FOR POWER CORD

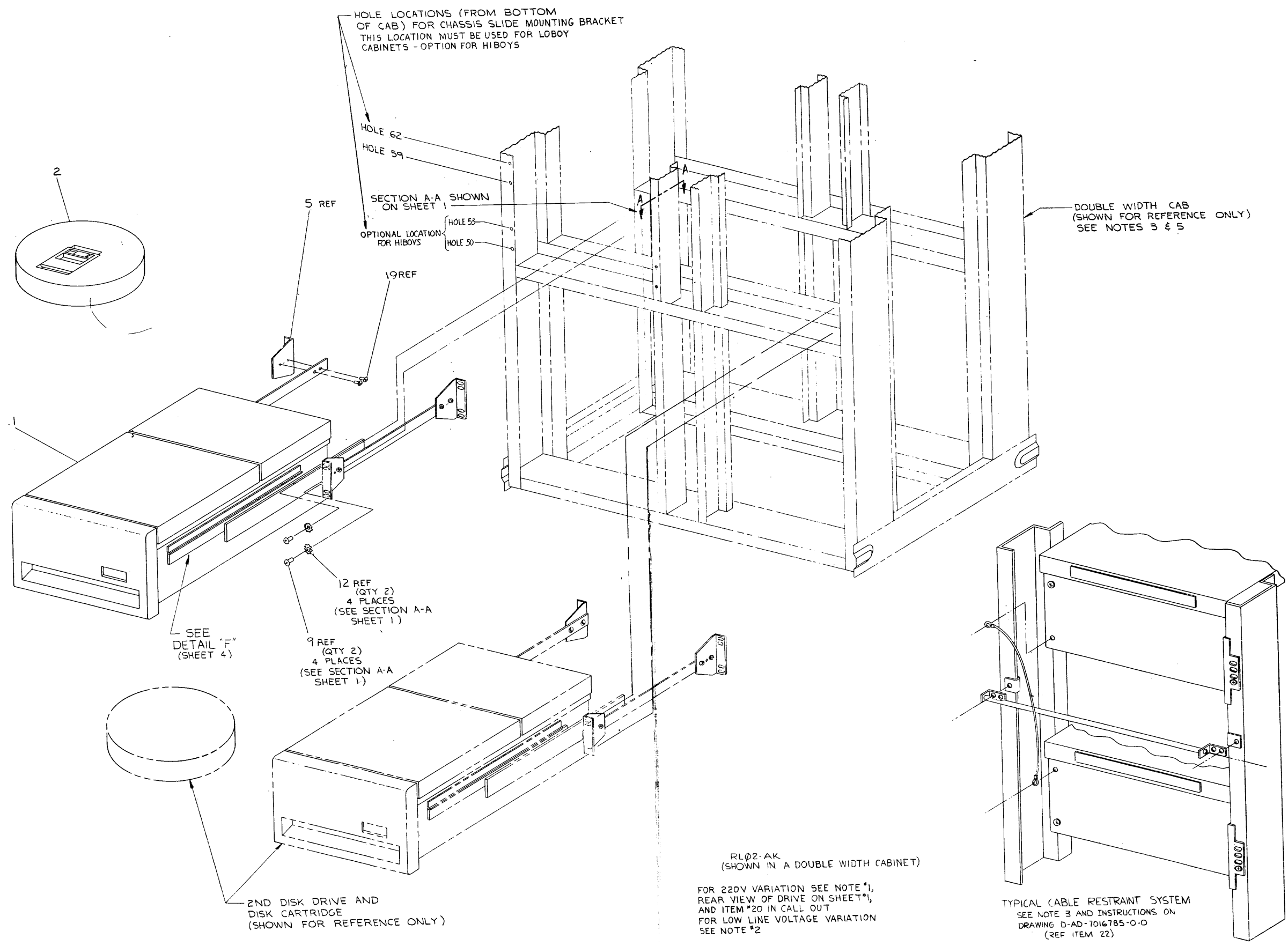
RL02-AK  
(SHOWN IN A SINGLE WIDTH CAB)  
FOR 220 V VARIATION, SEE NOTE 1, REAR VIEW OF DRIVE ON SHT 1 AND ITEM\*20 IN DWG 01  
FOR 120 LINE VOLTAGE VARIATION SEE NOTE 2.

DETAIL "B"  
SCALE: NONE  
FOR ONE CABLE USE ONE OF EACH

THIS DRAWING AND SPECIFICATIONS, HEREIN, ARE THE PROPERTY OF DIGITAL EQUIPMENT CORPORATION AND SHALL NOT BE REPRODUCED OR COPIED IN WHOLE OR IN PART WITHOUT THE WRITTEN PERMISSION OF DIGITAL EQUIPMENT CORPORATION.  
COPYRIGHT © 1975, DIGITAL EQUIPMENT CORPORATION

J  
H  
F  
E  
D  
C  
B  
A

J  
H  
F  
E  
D  
C  
B  
A



RL02-AK  
(SHOWN IN A DOUBLE WIDTH CABINET)  
FOR 220V VARIATION SEE NOTE #1,  
REAR VIEW OF DRIVE ON SHEET #1,  
AND ITEM #20 IN CALL OUT  
FOR LOW LINE VOLTAGE VARIATION  
SEE NOTE #2

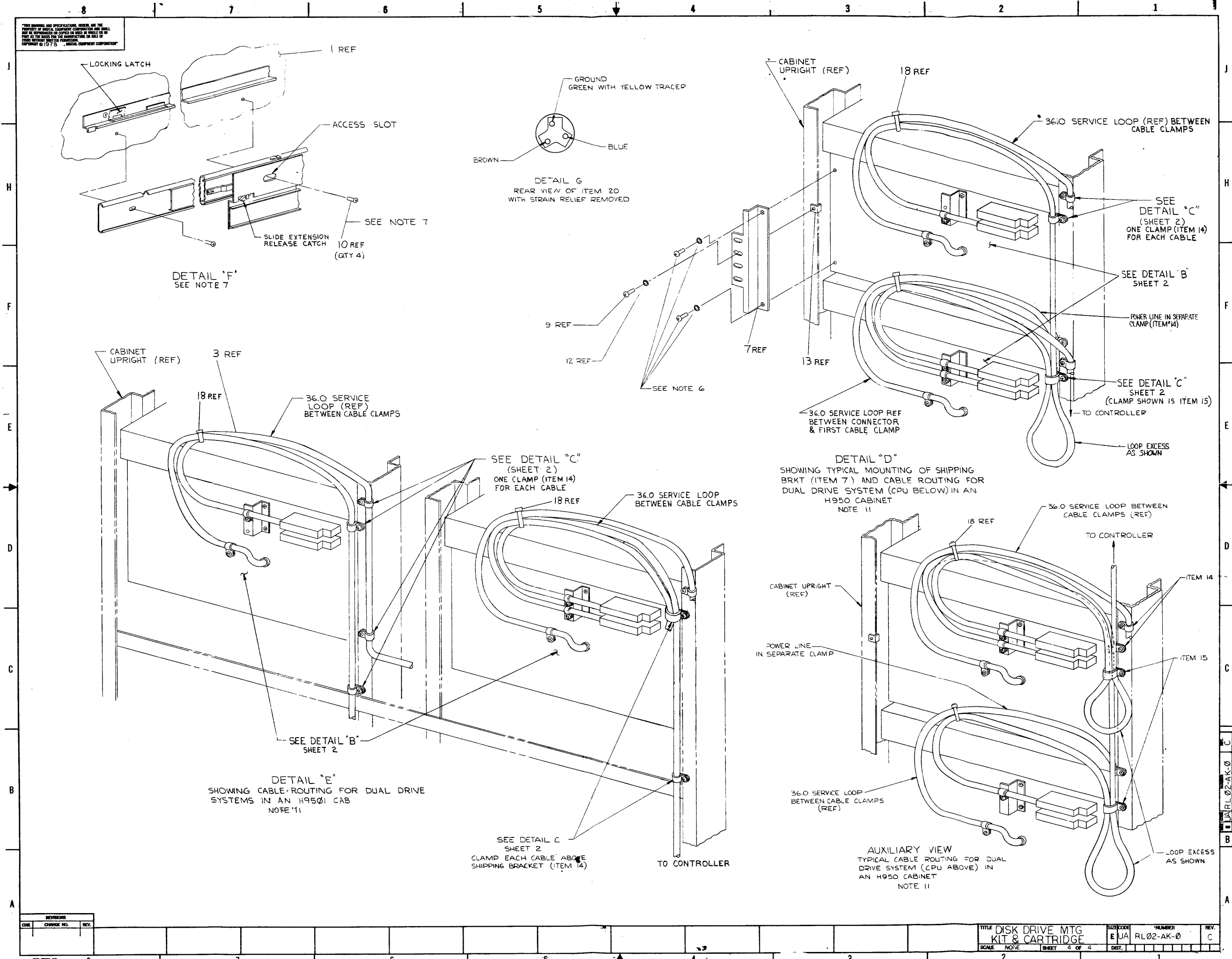
TYPICAL CABLE RESTRAINT SYSTEM  
SEE NOTE 3 AND INSTRUCTIONS ON  
DRAWING D-AD-7016785-0-0  
(REF ITEM 22)

REVISIONS		
CHK	CHANGE NO.	REV.

TITLE DISK DRIVE MTG KIT & CARTRIDGE		SIZE CODE EJA	NUMBER RL02-AK-0	REV. C
SCALE NONE	SHEET 3 OF 4	DIST.	1	

8 7 6 5 4 3 2 1

THIS DRAWING AND SPECIFICATIONS, HEREIN, ARE THE PROPERTY OF BUSHNELL EQUIPMENT CORPORATION AND SHALL NOT BE REPRODUCED OR COPIED IN WHOLE OR IN PART AS THE BASIS FOR THE MANUFACTURE OR SALE OF THIS EQUIPMENT WITHOUT THE WRITTEN PERMISSION OF BUSHNELL EQUIPMENT CORPORATION © 1978

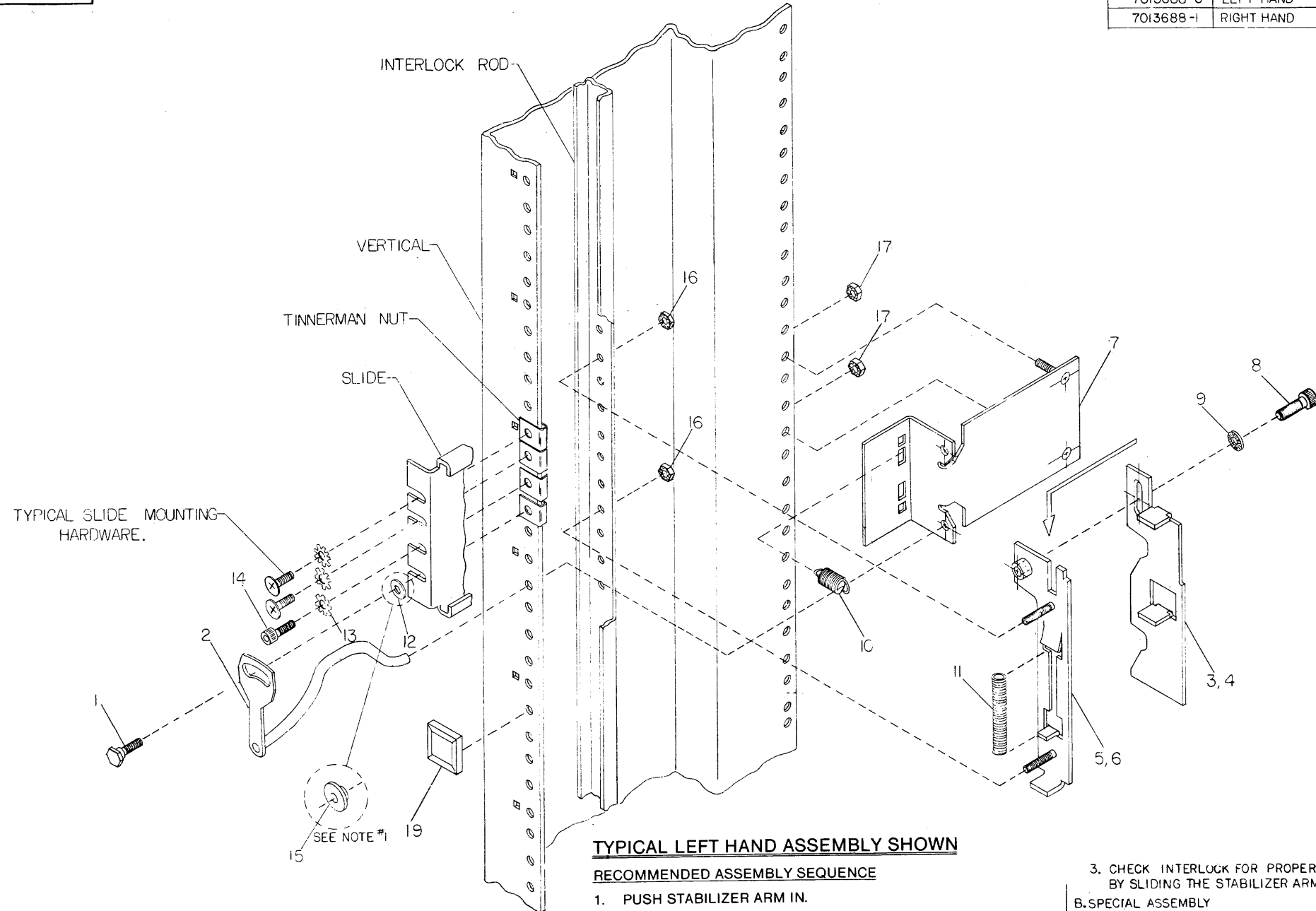


REVISIONS		
CHG	CHANGE NO.	REV.

THIS DRAWING AND ALL DIMENSIONS, HEREIN, ARE THE PROPERTY OF DIGITAL EQUIPMENT CORPORATION AND SHALL NOT BE REPRODUCED OR COPIED OR USED IN WHOLE OR IN PART AS THE BASIS FOR THE MANUFACTURE OR SALE OF ITEMS WITHOUT THE WRITTEN PERMISSION OF DIGITAL EQUIPMENT CORPORATION. COPYRIGHT © 1975, DIGITAL EQUIPMENT CORPORATION.

LEGEND	
PART NO.	VARIATION
7013688-0	LEFT HAND
7013688-1	RIGHT HAND

- NOTE:**
- USE ITEM #15 (SHOULDER, WASHER) IN PLACE OF ITEM #12 (FLAT WASHER) WHEN ITEM #1 (RETAINER INTERLOCK) IS NOT MOUNTED THROUGH A SLIDE MOUNTING HOLE.
  - ASSEMBLE ITEM #9 (SPRING, WASHER) WITH CONVEX SIDE TOWARD ITEM #3, 4 (PLATE, CAM).
  - CABINET EQUIPMENT MOUNTING HOLES ARE NUMBERED CONSECUTIVELY FROM THE BOTTOM UP. A SQUARE HOLE IS PROVIDED EVERY FIFTH MOUNTING HOLE TO AID IN COUNTING. WITH STABILIZER ARM PUSHED IN, THE INTERLOCK ROD HOLE PATTERN LINES UP WITH THE VERTICAL MOUNTING HOLES AND IS NUMBERED THE SAME.
  - ITEM #14 MUST ALWAYS BE USED ADJACENT TO ITEM #1.
  - WHEN INSTALLING CABINET TRIM STRIPS, MAKE SURE THEY DON'T INTERFERE WITH INTERLOCK OPERATION.



- INSTRUCTIONS**
- THE SYSTEM DOCUMENTATION WILL SPECIFY THE INTERLOCK LOCATION AND ASSEMBLY BY LETTER AND NUMBER CODE.
  - THE FIRST LETTER OF THE CODE SPECIFIES THE DIRECTION IN WHICH THE CHURCH KEY ASSEMBLY MUST BE INSTALLED. 'U' SPECIFIES UP (AS SHOWN ON PRINT) AND 'D' SPECIFIES DOWN.
  - THE SECOND LETTER (IF ANY) SPECIFIES WHICH OF THE TWO CAM PLATE NOTCHES ENGAGES WITH THE CHURCH KEY ASSEMBLY. IF NO LETTER APPEARS, WE CALL THIS THE NORMAL ASSEMBLY POSITION AND USE THE LOWER NOTCH. IF THE LETTER 'S' APPEARS, WE CALL THIS THE SPECIAL ASSEMBLY POSITION AND USE THE UPPER NOTCH.
  - THE NUMBER AT THE END OF THE INSTALLATION CODE SPECIFIES THE CABINET MOUNTING HOLE FOR THE ITEM #1 (INTERLOCK RETAINER). ALL OTHER PARTS OF THE ASSEMBLY ARE REFERENCED FROM THIS HOLE USING THE CHART BELOW.

DIRECTION / NOTCH SPECIFICATION	BACK PLATE: LOCATION OF TOP MOUNTING STUD	OUTRIGGER: LOCATION OF TOP MOUNTING STUD
U	X + 4	X
US	X	X
D	X + 6	X + 3
DS	X + 2	X + 3

NOTE: 'X' IS THE SPECIFIED INTERLOCK RETAINER LOCATION.

**TYPICAL LEFT HAND ASSEMBLY SHOWN**

**RECOMMENDED ASSEMBLY SEQUENCE**

- PUSH STABILIZER ARM IN.
- ASSEMBLE ITEM #5, 6 AND 11 ONTO INTERLOCK ROD USING ITEMS #16.
- ASSEMBLE ITEM #3, 4 ONTO ITEM #5, 6 USING ITEMS #8 AND #9. TIGHTEN ITEM #8 ONLY AFTER DEPRESSING ITEM #3, 4 AGAINST SPRING AS FAR AS POSSIBLE.
- HOOK ITEM #10 INTO ITEM #7. USE UPPER SLOT FOR "U" ASSEMBLIES AND LOWER SLOT. FOR "D" ASSEMBLIES. INSTALL ITEM #7 ONTO CABINET VERTICAL USING ITEMS #17, TORQUE TO 100±30 INCH POUNDS.
- INSTALL ITEM #2 REMEMBERING TO PASS THROUGH ITEM #10 BEFORE ENGAGING ITEM #7.
- AT THIS POINT IN THE ASSEMBLY, PROCEDURES FOR NORMAL ASSEMBLY AND SPECIAL ASSEMBLY DIFFER.
  - NORMAL ASSEMBLY**
    - MOUNT SLIDE USING ITEMS #1, #12, #13, #14 AND TYPICAL SLIDE MOUNTING HARDWARE.
    - ADJUST INTERLOCK BY LOOSENING ITEM #8, ALLOWING ITEM #3, 4 TO ASSUME ITS PROPER POSITION AND RETIGHTEN ITEM #8 TO 70±30 INCH-POUNDS.
  - SPECIAL ASSEMBLY**
    - INSTALL ITEM #1 AND #15 WITHOUT SLIDE.
    - ADJUST INTERLOCK BY LOOSENING ITEM #8 ALLOWING ITEM #3, 4 TO ASSUME ITS PROPER POSITION AND RETIGHTEN ITEM #8 TO 70±30 INCH-POUNDS.
    - REMOVE ITEM #1, #15.
    - MOUNT SLIDE USING ITEMS #1, #12, #13, #14 AND TYPICAL SLIDE MOUNTING HARDWARE.
    - CHECK INTERLOCK FOR PROPER OPERATION BY SLIDING THE STABILIZER ARM IN AND OUT.
- BOTH SPECIAL AND NORMAL ASSEMBLIES—INSTALL ITEMS #19, ONE ON EACH VERTICAL MOUNTING RAIL (BOTH SIDES OF EQUIPMENT), IN THE PLACES WHERE THE REARMOST PART OF THE BEZEL WOULD NORMALLY STRIKE. ITEMS #19 MUST NOT INTERFERE WITH ITEM #2 (ASSEMBLY, CHURCHKEY) OR TRIM STRIPS.

**CAUTION: OFF PRINT PARTS LIST**  
A-PL-7013688-0-0

QUANTITY & VARIATION	DESCRIPTION	DWG. PART NO.	ITEM NO.
1	INTERLOCK KIT (MARK III)	7013688-0	1

THIRD ANGLE PROJECTION

REMOVE BURRS AND BREAK SHARP CORNERS

DO NOT SCALE DIMS

MATERIAL SPEC PARTS LIST FINISH

DRG. R. OLSON 3-2-75

CHK'D. 3-2-75

ENCL. 1 3-16-75

PROJ. ENGR. 3-16-75

SCALE 1:2-0

SIZE 1000

SCALE 1:2-0

NO. 1 OF 1

DATE 3-16-75

REV.

8  
7  
6  
5  
4  
3  
2  
1