

digital

RK05 - H

Engineering Drawings

Digital Equipment Corporation

The material herein is for information purposes only and is subject to change without notice. Digital Equipment Corporation assumes no responsibility for any errors which may appear herein.

These drawings and specifications herein are the property of Digital Equipment Corporation and shall not be reproduced or copied or used in whole or in part as the basis for the manufacture or sale of items without written permission.
Copyright © 1975 Digital Equipment Corporation

"THE MATERIAL HEREIN IS FOR INFORMATION PURPOSES ONLY AND IS SUBJECT TO CHANGE WITHOUT NOTICE. DIGITAL EQUIPMENT CORPORATION ASSUMES NO RESPONSIBILITY FOR ANY ERRORS WHICH MAY APPEAR HEREIN."

DRAWING DIRECTORY

"THIS DRAWING AND SPECIFICATIONS, HEREIN, ARE THE PROPERTY OF DIGITAL EQUIPMENT CORPORATION AND SHALL NOT BE REPRODUCED OR COPIED OR USED IN WHOLE OR IN PART AS THE BASIS FOR THE MANUFACTURE OR SALE OF ITEMS WITHOUT WRITTEN PERMISSION. COPYRIGHT © 1977 , DIGITAL EQUIPMENT CORPORATION"

UNIT VARIATIONS	
VAR	TITLE
RK05-HA	RK05 UNIT SELECT SWITCH (FOUR SELECTION POSITIONS 0-3)
RK05 HB	RK05 UNIT SELECT SWITCH (EIGHT SELECTION POSITIONS 0-7)
RK05-HC	RK05 UNIT SELECT SWITCH (EIGHT SELECTION POSITIONS 0-7)

DATE	CHG. NO.	REV
6/6/77	RK0511-00005 D	1

REVISED & REDRAWN
P. HOLMES
9/29/77 RK05H-00007
9/29/77
P. HOLMES
P. HOLMES

USED ON OPTION/MODEL	DRN.	DATE	TITLE			
RK05	CHK'D.	DATE	digital			
	PROJ ENG.	DATE	RK05 UNIT SELECT SWITCH			
	PROD.	DATE	SIZE	CODE	NUMBER	REV
	FIELD SERV.	DATE	B	DD	RK05-H	F
SHEET 1	OF 2	DIST				

EN-01062-1A-16-R972(325)

FIND NO.	DRAWING NO.	DESCRIPTION	TYPE	FIND NO.	DRAWING NO.	DESCRIPTION	TYPE
	B-TC-RK05-H-1	RK05 UNIT SELECT SWITCH (HA/HB)	-				
	MP00435	FIELD MAINTENANCE PRINT SET ORDER NUMBER	-				
	B-TC-RK05-H-3	RK05 UNIT SELECT SWITCH (HC)	-				
	MP00436	FIELD MAINTENANCE PRINT SET ORDER NUMBER	-				
	D-UA-RK05-H-0	UNIT SELECT SWITCH ASSY	M				
	D-IA-7412795-0-0	FRONT PANEL	M				
	D-IA-7010518-0-0	UNIT SELECT CABLE ASSY	E/M				
	B-MD-7412995-0-0	THUMBWHEEL SW. BRKT.	M				
	D-CS-M7680-1 -1	M7680-YA MODULE	E				
	D-CS-M7700-YA-1	M7700 WITH REMOTE SELECT CAPABILITY	E/M				
	D-PS-1211334-0-0	LIGHT CHANNEL	E/M				
	A-DC-7419186-0-1	RK05F DECAL	M				
	A-DC-7414784-0-1	RK05J DECAL	M				
	C-IC-RK05-H-2	CABLING DIAGRAM	E				
	D-UA-M7680-0-0	DEC PACK INDEX 1 SECTOR	E/M				
	B-PL-M7680-0-0	DEC PACK INDEX 2 SECTOR	E/M				
	C-IA-7014164-0-0	REMOTE SWITCH CABLE ASSY	E/M				

TYPE: E ELECTRICAL
M MECHANICAL
E/M ELECTRO/MECHANICAL

digital

TITLE	RK05 UNIT SELECT SWITCH	SHEET 2 OF 2	SIZE	CODE	NUMBER	REV
		B	DD	RK05-H	F	

"THE MATERIAL HEREIN IS FOR INFORMATION PURPOSES ONLY AND IS SUBJECT TO CHANGE WITHOUT NOTICE. DIGITAL EQUIPMENT CORPORATION ASSUMES NO RESPONSIBILITY FOR ANY ERRORS WHICH MAY APPEAR HEREIN."

FIELD MAINTENANCE PRINT SET

"THIS DRAWING AND SPECIFICATIONS, HEREIN, ARE THE PROPERTY OF DIGITAL EQUIPMENT CORPORATION AND SHALL NOT BE REPRODUCED OR COPIED OR USED IN WHOLE OR IN PART AS THE BASIS FOR THE MANUFACTURE OR SALE OF ITEMS WITHOUT WRITTEN PERMISSION. COPYRIGHT © 1977, DIGITAL EQUIPMENT CORPORATION."

TABLE OF CONTENTS

MP00435	FIELD MAINTENANCE PRINT SET ORDER NUMBER
B-TC-RK05-H-1	RK05-H UNIT SELECT SWITCH (HA/HB)
B-DD-RK05-H	RK05 UNIT SELECT SWITCH
D-UA-RK05-H-0	UNIT SELECT SWITCH ASSY
D-CS-M7700-YA-1	M7700 WITH REMOTE SELECT CAPABILITY
C-IA-7014164-0-0	REMOTE SWITCH CABLE ASSY

UNIT VARIATIONS COVERED BY THIS PRINT SET

RK05-HA
RK05-HB

RK05-HA/HB
Field Maintenance
Print Set

Digital Equipment
Corporation
PRINT SET ORDER NUMBER
MP00435

REVISIONS	DATE	CHG. NO.	REV.	DESCRIPTION	USED ON OPTION/MODEL	DRN.	DATE	TITLE	SIZE	CODE	NUMBER	REV.
1	1-2-77	17	*	ORIGINATED J.F. HOLMES P.L. Holmes	RK05		6/12/77	RK05 UNIT SELECT SWITCH (HA/HB)	B	TC	RK05-H-1	B
	9/29/77						6/27/77		B	TC	RK05-H-1	B

SHEET 1 OF 1

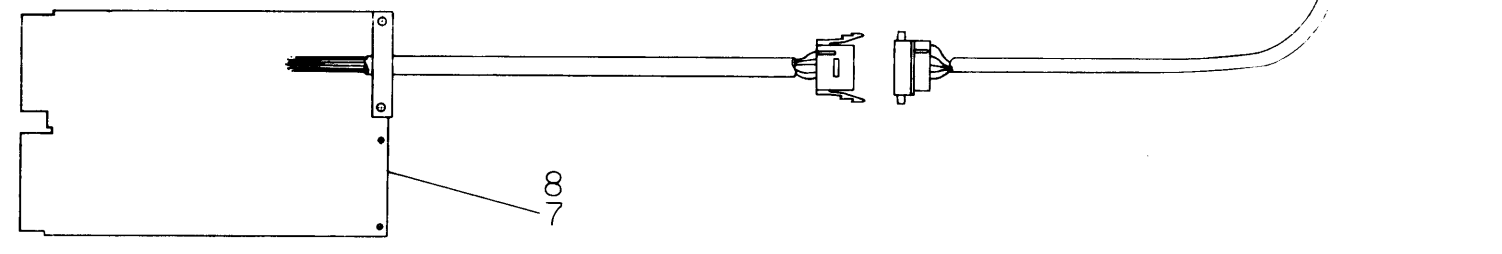
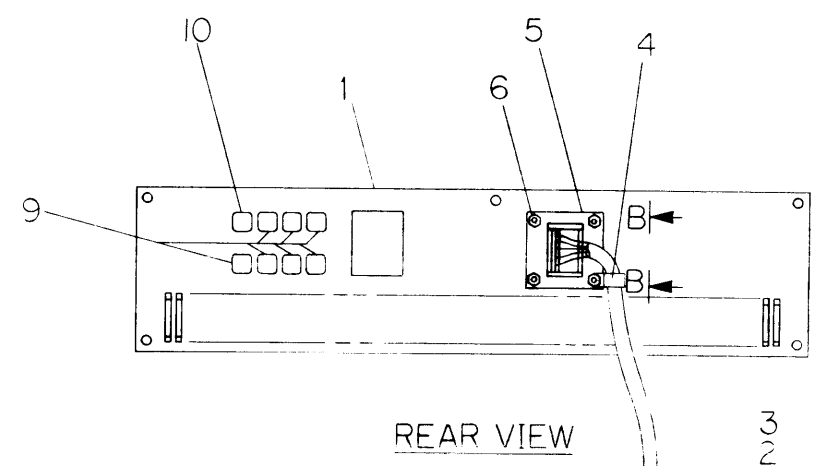
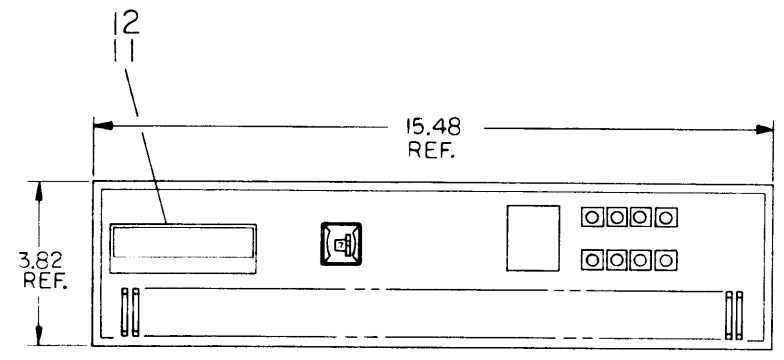
digital

"THIS DRAWING AND SPECIFICATIONS, HEREIN, ARE THE PROPERTY OF DIGITAL EQUIPMENT CORPORATION AND SHALL NOT BE REPRODUCED OR COPIED OR USED IN WHOLE OR IN PART AS THE BASIS FOR THE MANUFACTURE OR SALE OF ITEMS WITHOUT WRITTEN PERMISSION. COPYRIGHT © 1977, DIGITAL EQUIPMENT CORPORATION"

NUMBER	VARIATION
RK05-HA	M7700-YA
RK05-HB	M7700-YA
RK05-HC	M7680-YA

REV. 2
DUA RK05-H-0

NOTE:
1. FOR USE WITH RK05 BACK ASSEMBLY (REF. DRG. NO. D-UA-RK05F-0-2 AND A-PL-RK05F-0-0) REMOVE FRONT PANEL FROM UNIT AND M7700 OF M7680 MODULE AND REPLACE WITH THIS PANEL AND MOUNT ASSEMBLY.



QTY	DESCRIPTION	DWG/PART NO.	ITEM NO.
1	DECAL, (RK05J)	A-DC-7414784-0-1	12
1	DECAL, (RK05F)	A-DC-7419186-0-1	11
1	LIGHT CHANNEL (RED)	1211334-01	10
7	LIGHT CHANNEL (OPAQUE)	1211334-00	9
1	MODULE, M7700-YA	M7700-YA	8
1	MODULE, M7680-YA	M7680-YA	7
4	NUT, KEPS #6-32	9006560	6
1	BRKT, THUMBWHEEL SW.	B-MD-7412995-0-0	5
1	CLAMP, CABLE 5/16 DIA.	9007082	4
1	CABLE, UNIT SELECT (0-7)	7010518-1	3
1	CABLE, UNIT SELECT (0-3)	7010518-0	2
1	PANEL, FRONT	D-IA-7412795-0-0	1

CLASS OF ACCURACY	NOMINAL DIMENSION RANGE INCHES				
(CHECK ONE)	OVER 0 TO 0.2	OVER 0.2 TO 1.2	OVER 1.2 TO 4.0	OVER 4.0 TO 12.0	OVER 12.0 TO 40.0
MEDIUM	+0.04	+0.08	+0.12	+0.16	+0.24
PREFERRED	+0.12	+0.16	+0.25	+0.4	+0.7

REV.	CHANGE NO.	DESCRIPTION
1	1	ORIGINATED
2	1	REVISED
3	1	REVISED
4	1	REVISED
5	1	REVISED
6	1	REVISED
7	1	REVISED

THIRD ANGLE PROJECTION

REMOVE BURRS AND BREAK SHARP CORNERS

DO NOT SCALE DWG

MATERIAL: _____

FINISH: _____

DRN: *al. r. k.* 12/1977

CHK'D: _____

ENG. *W. H.* 6-20-77

PROJ. ENG. *W. H.* 6-20-77

PROD. *W. H.* 6-20-77

NEXT HIGHER ASSY. _____

SCALE: _____

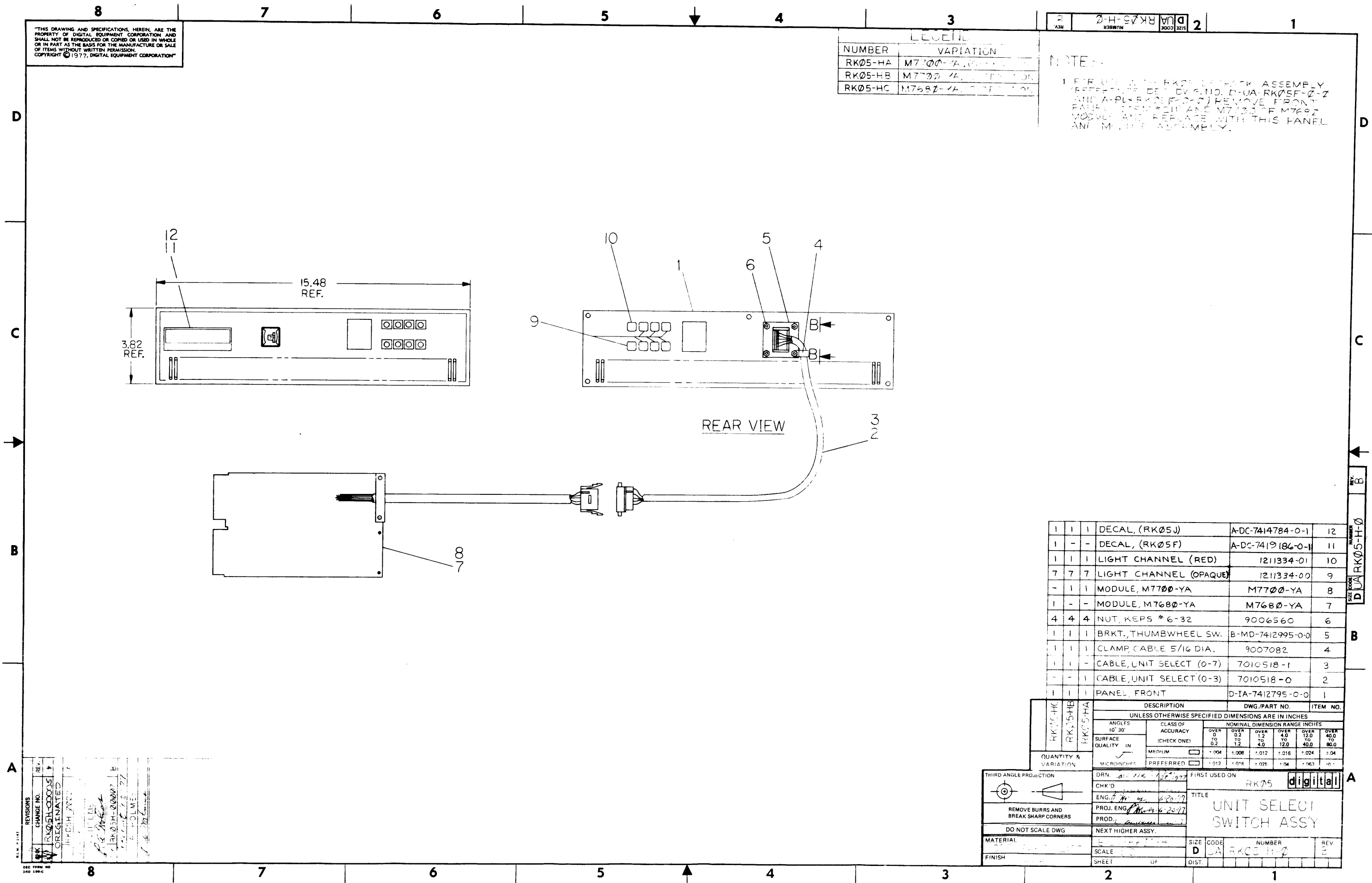
SHEET _____ OF _____

FIRST USED ON: _____

TITLE: **UNIT SELECT SWITCH ASSY**

REV. 2

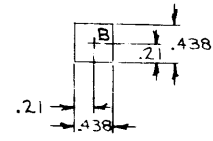
DUA RK05-H-0



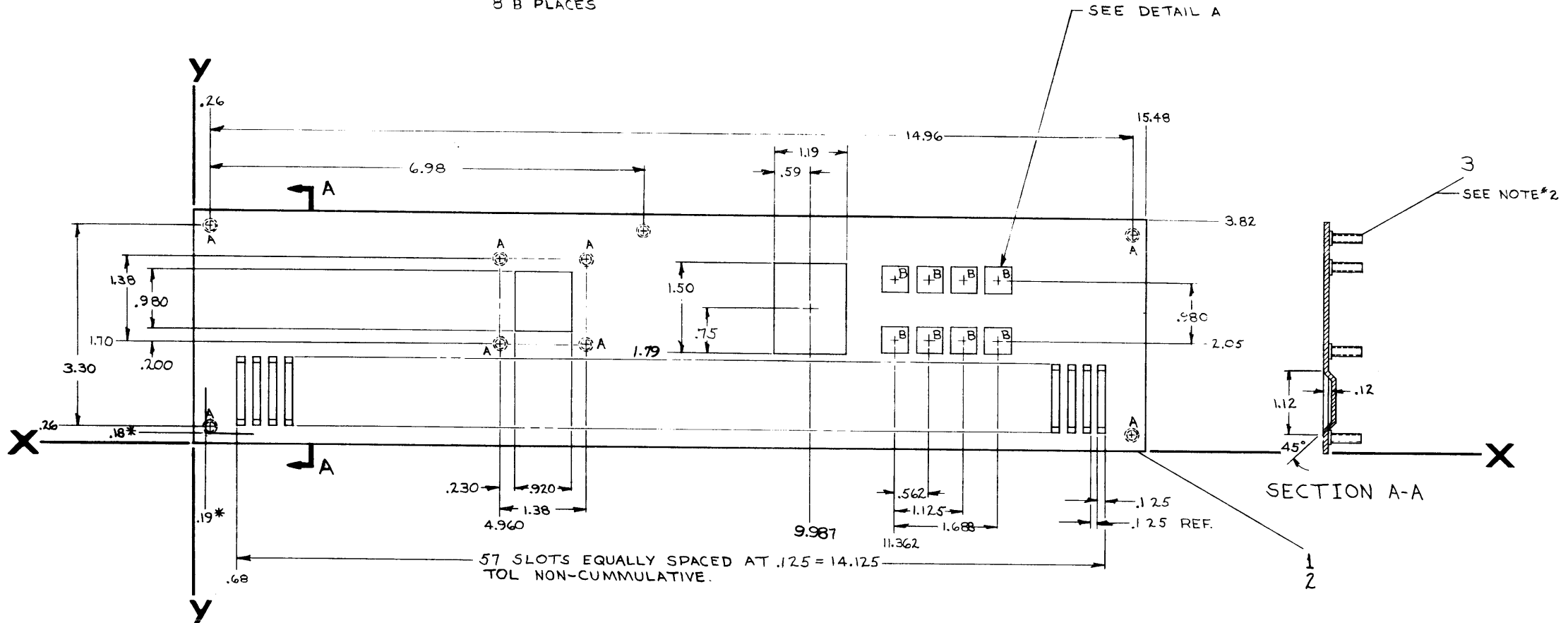
THIS DRAWING AND SPECIFICATIONS, HEREIN, ARE THE PROPERTY OF DIGITAL EQUIPMENT CORPORATION AND SHALL NOT BE REPRODUCED OR COPIED OR USED IN WHOLE OR IN PART AS THE BASIS FOR THE MANUFACTURE OR SALE OF ITEMS WITHOUT WRITTEN PERMISSION. COPYRIGHT © 1974, DIGITAL EQUIPMENT CORPORATION

REV. 0-0-9622121A 2

NOTES:
 1. STRAIGHTEN AFTER PUNCHING.
 2. INSTALL ITEM *B WELD STUD AT PLACES.
 3. ASTERISK DIMENSIONS FOR SILK SCREEN PURPOSE ONLY.



DETAIL A
B-B PLACES



57 SLOTS EQUALLY SPACED AT .125 = 14.125
TOL NON-CUMMULATIVE.

SECTION A-A

QTY.	DESCRIPTION	PART NO.	ITEM NO.
9	WELD STUD 6-32 x 1/2	9008161-1	3
1	SILK SCREEN	B-SS-7412795-0-1	2
1	FRONT PANEL	7412795	1

FIRST USED ON OPTION/MODEL RK05		PARTS LIST	
DIMENSIONAL TOLERANCE DIMENSIONS ARE MILLIMETERS UNLESS OTHERWISE SPECIFIED		DRN S. Markowitz	DATE 9-20-74
MILLIMETERS INCHES ANGLES		CHK'D D. B. Smith	DATE 1-9-75
X,XX ±0.10	.XXX ±0.005	ENG. D. B. Smith	DATE 1-9-75
XX ±0.05	.XX ±0.02	PROJ. ENG. D. B. Smith	DATE 1-9-75
X ±0.2	.X ±0.1	PRD. D. B. Smith	DATE 1-9-75
THIRD ANGLE PROJECTION	REMOVE BURRS AND BREAK SHARP CORNERS SURFACE QUALITY	TITLE FRONT PANEL	
MATERIAL ALUMINUM 5083 ONS.	FINISH ANODIZED	NEXT HIGHER ASSY.	
SCALE 1/1		SIZE CODE D IA	NUMBER 7412795-0-0
SHEET 1 OF 1		REV.	

REV.	CHANGE NO.

REV. 0-0-9622121A 2

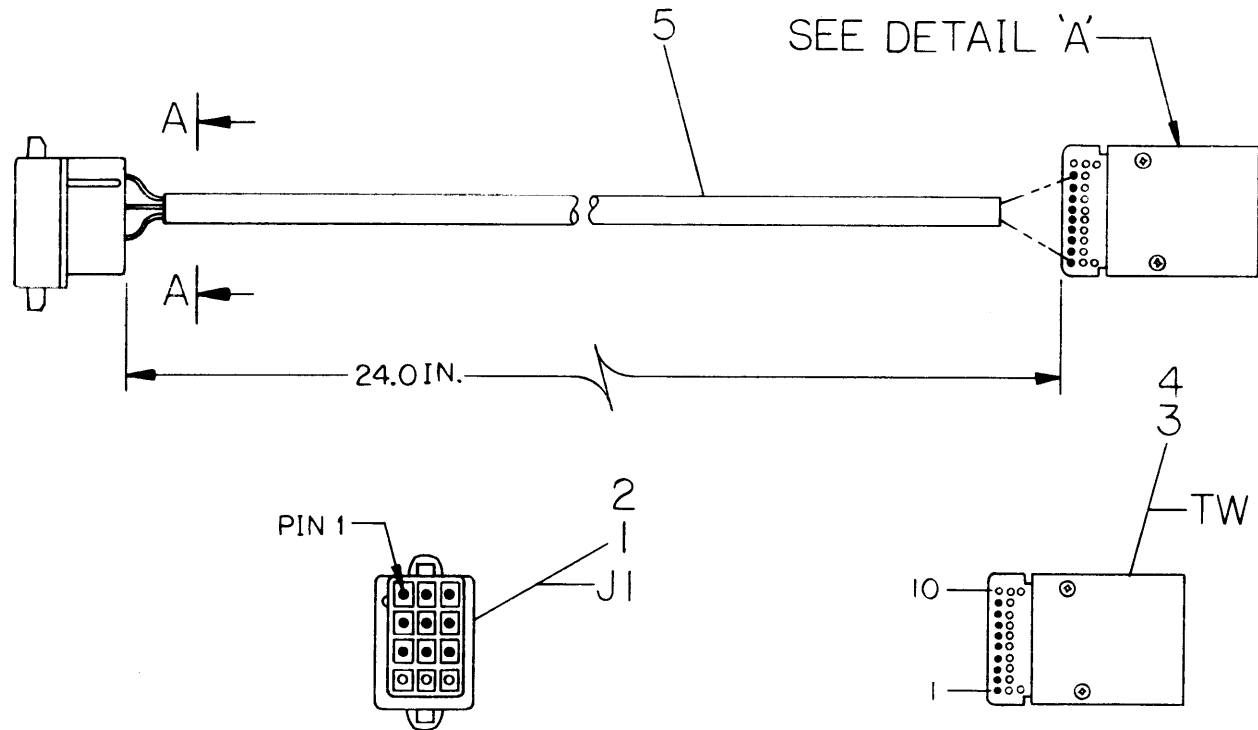
"THIS DRAWING AND SPECIFICATIONS, HEREIN, ARE THE PROPERTY OF DIGITAL EQUIPMENT CORPORATION AND SHALL NOT BE REPRODUCED OR COPIED OR USED IN WHOLE OR IN PART AS THE BASIS FOR THE MANUFACTURE OR SALE OF ITEMS WITHOUT WRITTEN PERMISSION. COPYRIGHT © 1977, DIGITAL EQUIPMENT CORPORATION"

WIRE TABLE

ITEM NO.	DESCRIPTION		FROM		TO		WIRE LGTH.
	AWG	COLOR	CONN.	WITH	CONN.	WITH	
6	22	RED	TW-1	SOLDER	J1-1	2	27 IN.
7	↑	BLK	TW-2	↑	J1-2	↑	↑
8	↑	BRN	TW-3	↑	J1-3	↑	↑
9	↑	ORN	TW-4	↑	J1-4	↑	↑
10	↑	YEL	TW-5	↑	J1-5	↑	↑
11	↑	GRN	TW-6	↑	J1-6	↑	↑
12	↑	BLU	TW-7	↑	J1-7	↑	↑
13	↓	VIO	TW-8	↓	J1-8	↓	↓
14	22	WHT	TW-9	SOLDER	J1-9	2	27 IN.

NOTES:

1. VARIATION "-0" HAS DIAL STOPS INSERTED IN POSITIONS A AND E ON THUMB-WHEEL SWITCH.



VIEW A-A

DETAIL 'A'
SEE NOTE 1

QTY	DESCRIPTION	DWG./PART NO.	ITEM NO.
27	WIRE, 22 AWG STRD TEF WHT	9107350-99	14
↑	WIRE, 22 AWG STRD TEF VIO	9107350-77	13
↑	WIRE, 22 AWG STRD TEF BLU	9107350-66	12
↑	WIRE, 22 AWG STRD TEF GRN	9107350-55	11
↑	WIRE, 22 AWG STRD TEF YEL	9107350-44	10
↑	WIRE, 22 AWG STRD TEF ORN	9107350-33	9
↑	WIRE, 22 AWG STRD TEF BRN	9107350-11	8
↑	WIRE, 22 AWG STRD TEF BLK	9107350-00	7
27	WIRE, 22 AWG STRD TEF RED	9107350-22	6
25	TUBING, BLACK 1/4" DIA.	9107243	5
-	2 DIAL STOP	-	4
1	SWITCH, THUMBWHEEL	1213019-00	3
9	PIN, MATE-N-LOCK (MALE)	1209378-03	2
1	CONN. HOUSING, 12 TERM	1209351-12	1

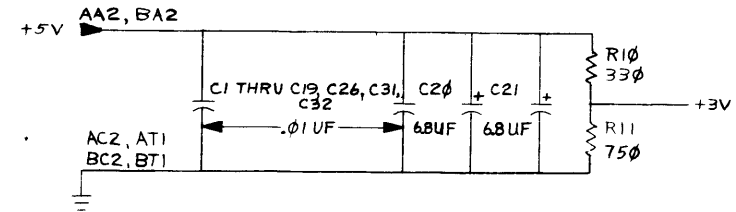
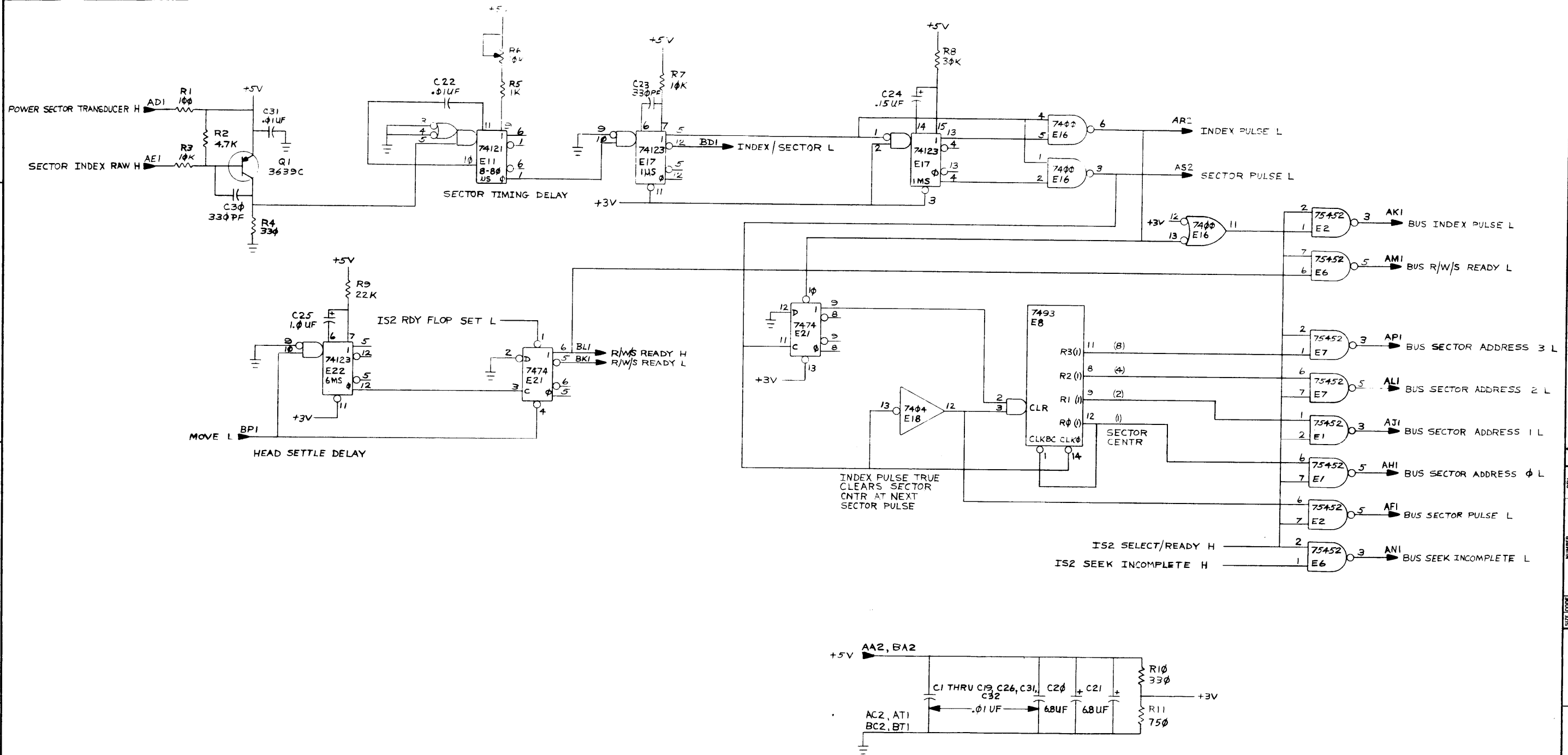
NUMBER	VARIATION
7010518-1	0-7 POSITION SW.
7010518-0	0-3 POSITION SW.

LEGEND

REV.	CHG.	BY	DATE	REASON
B	01	RK05H	0005	REVISED & REDRAWN

7010518-1	7010518-0	DESCRIPTION	DWG./PART NO.	ITEM NO.
UNLESS OTHERWISE SPECIFIED DIMENSIONS ARE IN INCHES				
ANGLES ±0° 30'	CLASS OF ACCURACY (CHECK ONE)	NOMINAL DIMENSION RANGE INCHES		
SURFACE QUALITY IN MICROINCHES		OVER 0 TO 0.2	OVER 0.2 TO 1.2	OVER 1.2 TO 4.0
✓	MEDIUM	±.004	±.008	±.012
	PREFERRED	±.012	±.016	±.025
THIRD ANGLE PROJECTION		DRN. <i>[Signature]</i> 6-2-77	FIRST USED ON RK05-H digital	
REMOVE BURRS AND BREAK SHARP CORNERS		CHK'D. <i>[Signature]</i> 6-20-77	TITLE CABLE, ASSY UNIT SELECT	
DO NOT SCALE DWG		ENG. <i>[Signature]</i> 6-20-77	NEXT HIGHER ASSY.	
MATERIAL SEE PARTS LIST		PROD. <i>[Signature]</i> 6-20-77	SIZE C	CODE IA
FINISH		SHEET 1 OF 1	NUMBER 7010518-C-0	REV. B

"THIS DRAWING AND SPECIFICATIONS HEREIN ARE THE PROPERTY OF DIGITAL EQUIPMENT CORPORATION AND SHALL NOT BE REPRODUCED OR COPIED OR USED IN WHOLE OR IN PART AS THE BASIS FOR THE MANUFACTURE OR SALE OF ITEMS WITHOUT WRITTEN PERMISSION. COPYRIGHT © 1976, DIGITAL EQUIPMENT CORPORATION"



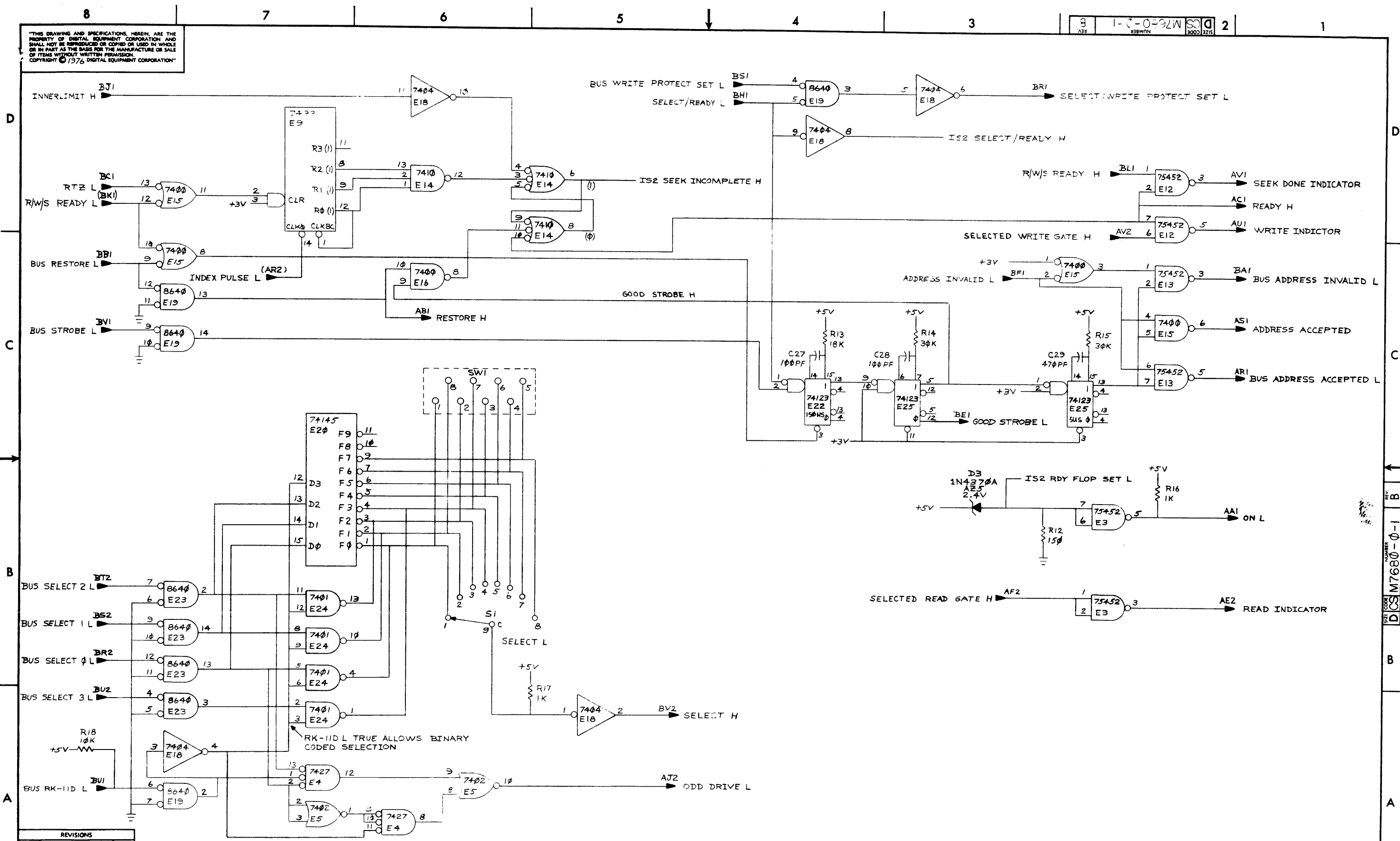
REV.	CHG.	NO.	DATE
B			
A			

REVISIONS
 S. RADOFF
 5-31-77

DRN. 22 JAN 76	FIRST USED ON	digital
CHK'D 3 FEB 76	TITLE	(ISI) DEC PACK INDEX AND SECTOR
ENG.	PROJ. ENG.	
PROD. 20 FEB 76	NEXT HIGHER ASSY.	
D-UA-M7680-0-0	SIZE CODE	NUMBER
SCALE	D CS	M7680-0-1
SHEET	OF	DIST.

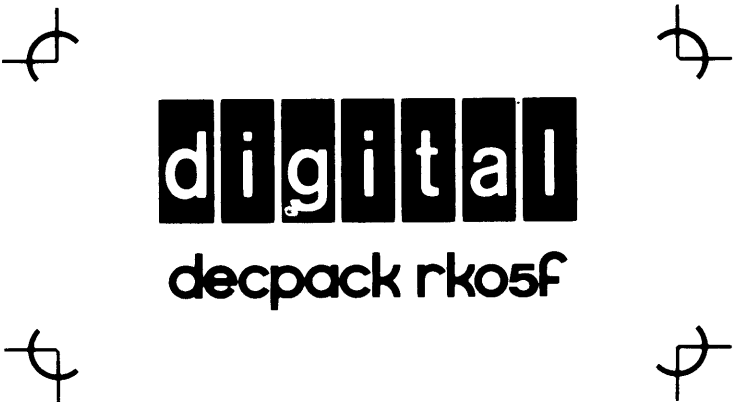
SIZE CODE D CS M7680-0-1 REV. B

"THIS DRAWING AND SPECIFICATIONS, HEREIN, ARE THE PROPERTY OF DIGITAL EQUIPMENT CORPORATION AND SHALL NOT BE REPRODUCED OR COPIED OR USED IN WHOLE OR IN PART AS THE BASIS FOR THE MANUFACTURE OR SALE OF ITEMS WITHOUT WRITTEN PERMISSION. COPYRIGHT © 1976 DIGITAL EQUIPMENT CORPORATION"



REVISIONS		
CHK	CHANGE NO.	REV.

"THIS DRAWING AND SPECIFICATIONS, HEREIN, ARE THE PROPERTY OF DIGITAL EQUIPMENT CORPORATION AND SHALL NOT BE REPRODUCED OR COPIED OR USED IN WHOLE OR IN PART AS THE BASIS FOR THE MANUFACTURE OR SALE OF ITEMS WITHOUT WRITTEN PERMISSION
 COPYRIGHT © 1977, DIGITAL EQUIPMENT CORPORATION"



REVISIONS		REV.
CHK	CHANGE NO.	*
	RK05F	
ORIGINATED		

WHITE ON BLACK

DRN. <i>S. Demers</i>	<i>14 July 77</i>	FIRST USED ON	<i>RK05F</i>	digital
CHK'D		TITLE		
ENG.		<i>DECAL</i>		
PROJ. ENG.		<i>(RK05F)</i>		
PROD. <i>Sam Pruett</i>	<i>4 Aug 77</i>			
NEXT HIGHER ASSY.		SIZE	CODE	NUMBER
SCALE		<i>A</i>	<i>DC</i>	<i>7419186-0-1</i>
SHEET	OF	DIST.		REV. <i>*</i>

THIS DRAWING AND SPECIFICATIONS HEREIN ARE THE PROPERTY OF DIGITAL EQUIPMENT CORPORATION AND SHALL NOT BE REPRODUCED OR COPIED OR USED IN WHOLE OR IN PART AS THE BASIS FOR THE MANUFACTURE OR SALE OF ITEMS WITHOUT WRITTEN PERMISSION
 COPYRIGHT © 1975 DIGITAL EQUIPMENT CORPORATION



REVISIONS	CHANGE NO	REV
	rk05-00067	
ORIGINATED		

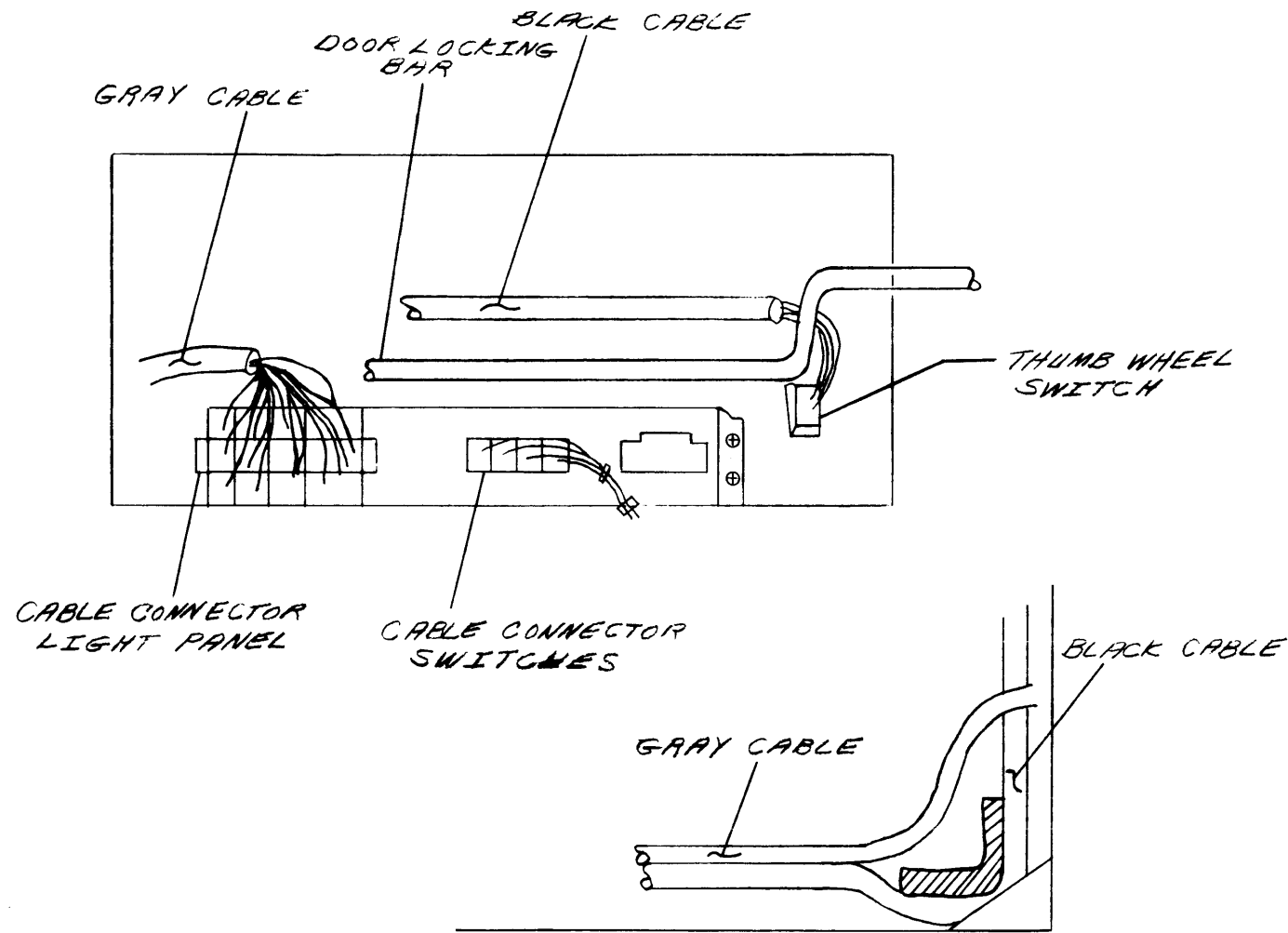
white on black

DRN.	<i>L. Demers 9-13-75</i>		FIRST USED ON	digital	
CHK'D			RK05J		
ENG.			TITLE		
PROJ. ENG.			DECAL		
PROD.			(RK05J)		
NEXT HIGHER ASSY					
	SIZE	CODE	NUMBER	REV	
SCALE	A	DC	74-4724-0-1		
SHEET	OF	DIST			

"THIS DRAWING AND SPECIFICATIONS, HEREIN, ARE THE PROPERTY OF DIGITAL EQUIPMENT CORPORATION AND SHALL NOT BE REPRODUCED OR COPIED OR USED IN WHOLE OR IN PART AS THE BASIS FOR THE MANUFACTURE OR SALE OF ITEMS WITHOUT WRITTEN PERMISSION.
 COPYRIGHT © DIGITAL EQUIPMENT CORPORATION
 5-13-75"

NOTES:

1. CARE MUST BE TAKEN THAT SWITCH AND BLACK CABLE DO NOT INTERFERE WITH OPERATION OF LOCK LOCKING BAR.
2. BLACK CABLE MUST BE ROUTED ON OUTSIDE OF METAL STUD AND TIE WRAPPED TO GRAY CABLE.



D
C
B
A

D
C
B
A

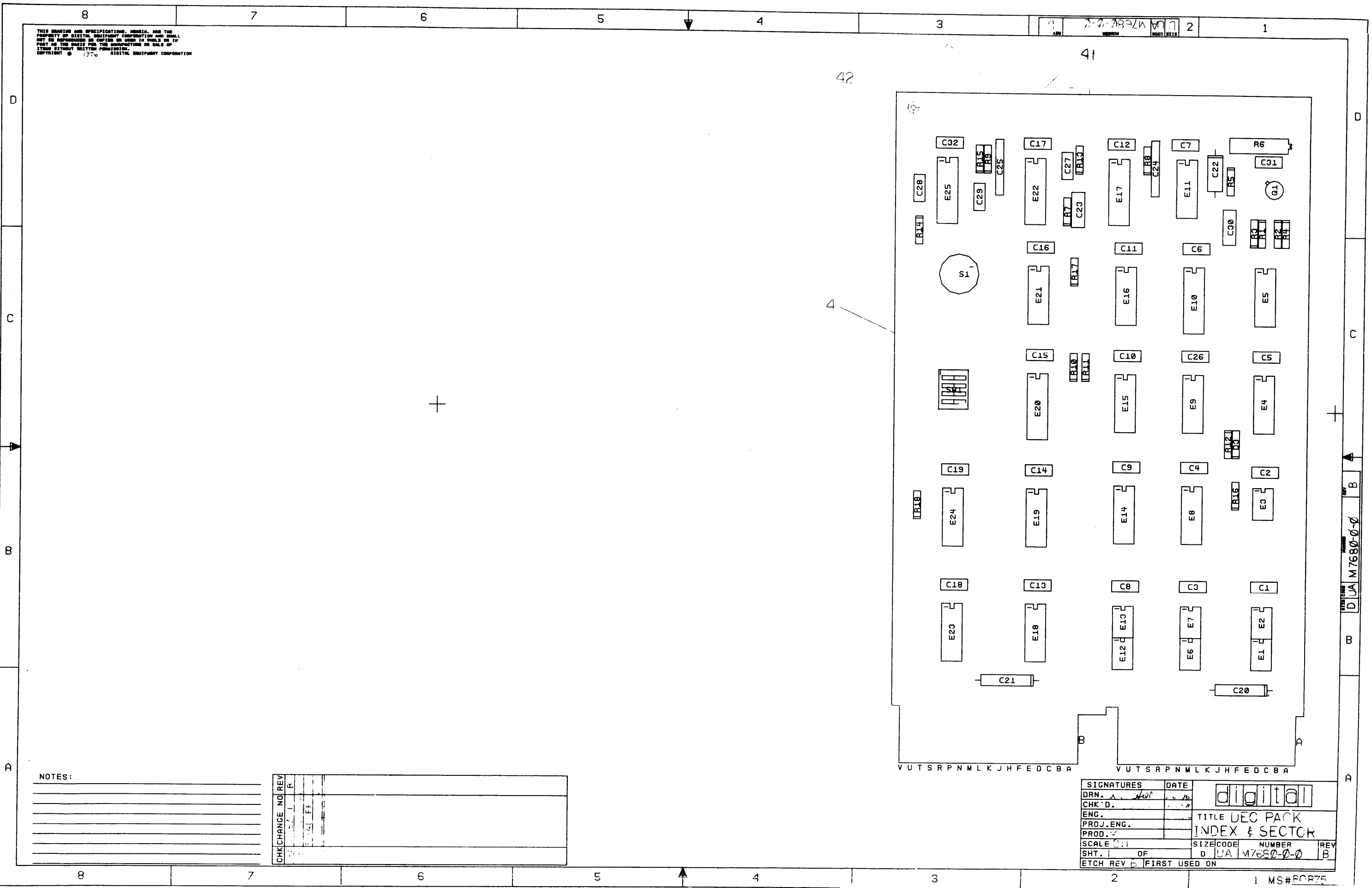
REV.	A
CHANGE NO.	7606884-00001
ORIGINATED	
CHK	

FIRST USED ON OPTION/MODEL		QTY.	DESCRIPTION	PART NO.	ITEM NO.
RK05					
PARTS LIST					
DIMENSIONAL TOLERANCE		DRN.	DATE		
DIMENSIONS ARE MILLIMETERS INCHES UNLESS OTHERWISE SPECIFIED		CHK'D	DATE		
MILLIMETERS	INCHES	ENG.	DATE		
ANGLES		PROJ. ENG.	DATE		
X,XX = ±0.10	.XXX = ±.005			TITLE	
X,X = ±0.5	.XX = ±.02			CABLING DIAGRAM	
X = ±2	.X = ±.1			NEXT HIGHER ASSY.	
THIRD ANGLE PROJECTION	REMOVE BURRS AND BREAK SHARP CORNERS SURFACE QUALITY ✓			SIZE CODE	NUMBER
				C IC	RK05-H 2
	MATERIAL			REV.	A
	FINISH				
		B-DD-RK05-H	SCALE		
		SHEET	OF		

REV. A
NUMBER R K 0 5 - H - 2
SIZE CODE C I C

THIS DRAWING AND SPECIFICATIONS, HEREIN, ARE THE PROPERTY OF DIGITAL EQUIPMENT CORPORATION AND SHALL NOT BE REPRODUCED OR COPIED OR USED IN WHOLE OR IN PART AS THE BASIS FOR THE MANUFACTURE OR SALE OF ITEMS WITHOUT WRITTEN PERMISSION.
 COPYRIGHT © 1976 DIGITAL EQUIPMENT CORPORATION

3-7-78 92M 11 2



NOTES:

CHG	NO	REV	DATE	BY

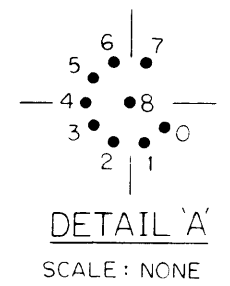
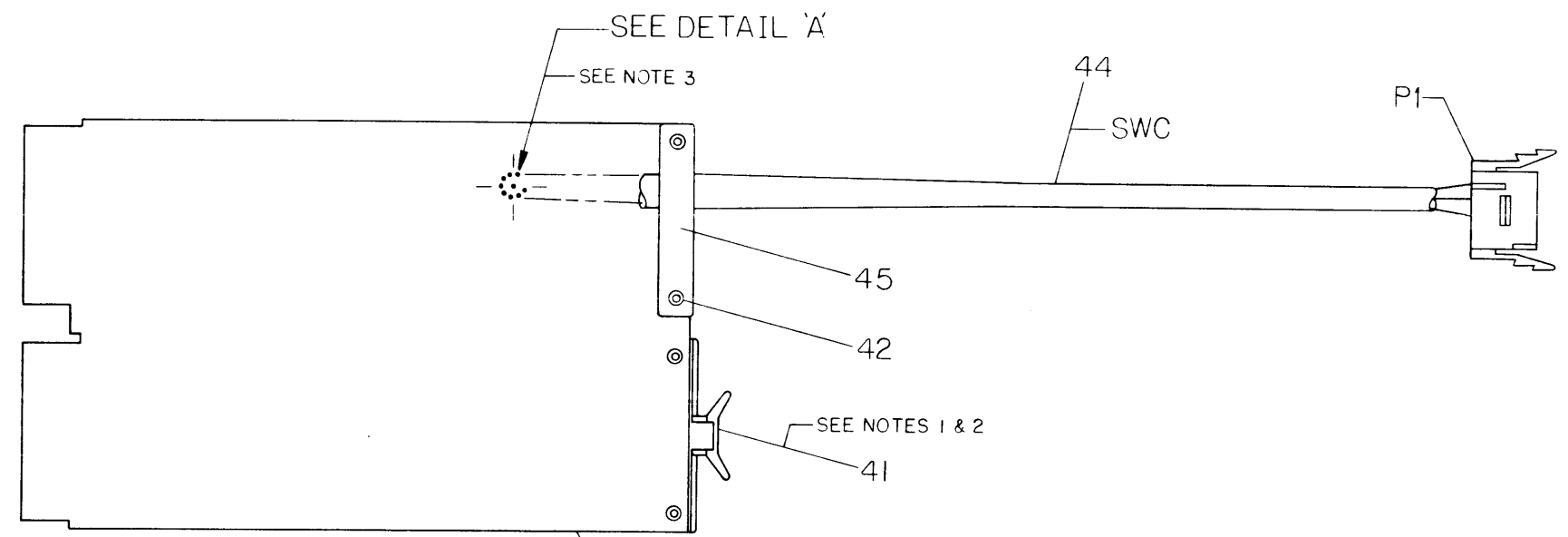
SIGNATURES		DATE	digital
DRN. A			
CHK'D.			TITLE DEC PACK
ENG.			INDEX & SECTOR
PROJ. ENG.			
PROD.			
SCALE 1:1			SIZE CODE NUMBER
SHT. 1 OF			D UA M7680-0-0
ETCH REV B	FIRST USED ON		REV B

"THIS DRAWING AND SPECIFICATIONS, HEREIN, ARE THE PROPERTY OF DIGITAL EQUIPMENT CORPORATION AND SHALL NOT BE REPRODUCED OR COPIED OR USED IN WHOLE OR IN PART AS THE BASIS FOR THE MANUFACTURE OR SALE OF ITEMS WITHOUT WRITTEN PERMISSION. COPYRIGHT © 1977, DIGITAL EQUIPMENT CORPORATION"

WIRE TABLE						
ITEM NO.	AWG	COLOR	FROM		TO	
			POINT	WITH	POINT	WITH
44	22	RED	SWC 1	—	MB 8	SOLDER
		BLK	SWC 2	↑	MB 2	↓
		BRN	SWC 3		MB 1	
		ORN	SWC 4		MB 2	
		YEL	SWC 5		MB 3	
		GRN	SWC 6		MB 4	
		BLU	SWC 7		MB 5	
		VIO	SWC 8		MB 6	
44	22	WHT	SWC 9	—	MB 7	SOLDER

NOTICE: BE AWARE OF EXISTING M7680-0)

1. REMOVE EXISTING FLIP CHIP HANDLES ON M7680 MODULE AND REPLACE WITH FLIP CHIP HANDLE LABELED M7680-YA AND CABLE CLAMP AS PER DRAWING.
2. STAMP FLIP CHIP HANDLE WITH C.S. REV. OF ORIGINAL M7680 MODULE.
3. REMOVE EXISTING ROTARY SWITCH (S1), 8 POS. FROM M7680 MODULE AND WIRE CABLE (ITEM 4) PER WIRE TABLE.



DESCRIPTION		DWG./PART NO.		ITEM NO.	
UNLESS OTHERWISE SPECIFIED DIMENSIONS ARE IN INCHES					
ANGLES ±0° 30'		CLASS OF ACCURACY (CHECK ONE)		NOMINAL DIMENSION RANGE INCHES	
SURFACE QUALITY		MEDIUM		0 TO 0.2	0.2 TO 1.2
IN		PREFERRED		1.2 TO 4.0	4.0 TO 12.0
MICROINCHES		±0.004 ±0.008 ±0.012 ±0.016 ±0.024 ±0.04		12.0 TO 40.0	40.0 TO 80.0
QUANTITY & VARIATION		MEDIUM		±0.012 ±0.016 ±0.025 ±0.04 ±0.063 ±0.1	
THIRD ANGLE PROJECTION		DRN. [Signature]		FIRST USED ON	
REMOVE BURRS AND BREAK SHARP CORNERS		CHK'D [Signature]		RK05-HC digital	
DO NOT SCALE DWG		ENG. [Signature]		TITLE	
MATERIAL		PROD. [Signature]		INFLEX 2 SECTOR	
FINISH		NEXT HIGHER ASSY.		SIZE CODE NUMBER REV.	
SHEET OF		SCALE		D LA M7680-0-0	
DIST.		OF		1	

REV.	
CHANGE NO.	
CHK	

SIZE CODE D LA M7680-0-0
 NUMBER
 REV. B

DIGITAL EQUIPMENT CORPORATION

PARTS LIST

ETCH REV E

QUANTITY / VARIATION

NOTES:

MADE BY K. HOFFGSON	CHECKED <i>N. Davidson</i>	SECTION
DATE 3 FEB 76	DATE 3 FEB 76	
ENG <i>[Signature]</i>	PROD <i>Jack F. Smith</i>	ISSUED SECTION
DATE	DATE 25 FEB 76	

ITEM NO.	DRAWING NO.	PART NO.	DESCRIPTION	QUANTITY / VARIATION												REF. DESIGNATION
				M7680-0	M7680-YA											
1	D-CS-M7680-0-1		DEC PAK INDEX SECTOR (C.S.)	REF	REF											
2	D-AH-M7680-0-5		ASSY/DRILLING HOLE LAYOUT	REF	REF											
3	B-MH-M7680-0-6		MODULE ECO HISTORY	REF	REF											
4	5012018		ETCHED CIRCUIT BOARD	1	1											
5	1005306-00		CAP 6.8UF 35V 20% S.TANT	2	2											C20,C21
6	1000016-00		CAP 100PF 100V 5% D.M.	2	2											C27,C28
7	1000023-00		CAP 330PF 100V 5% D.M.	2	2											C23,C30
8	1000024-00		CAP 470PF 100V 5% D.M.	1	1											C29
9	1001610-01		CAP .01UF 100V DISC	22	22											C1 THRU C19, C26,C31,C32
10	1001776-00		CAP 1.0UF 35V 10% S.TANT	1	1											C25
11	1002180-00		CAP .15UF 35V 20% S.TANT	1	1											C24
12	1005784-00		CAP .01UF 100V 10% MYLAR	1	1											C22
13	1101938-00		DIODE 1N4370A VZ 2.4 5%	1	1											D3
14	1210042-00		SWITCH ROTARY 8 POS	1	-											S1
15	1300365-00		RES 1K 1/4W 5%	3	3											R5,R16,R17
16	1300229-00		RES 100 1/4W 5%	1	1											R1
17	1300250-00		RES 150 1/4W 5%	1	1											R12
18	1300295-00		RES 330 1/4W 5%	2	2											R4,R10
19	1300447-00		RES 4.7K 1/4W 5%	1	1											R2

E.C.O. NO. 0001

THIS DRAWING AND SPECIFICATIONS, HEREIN, ARE THE PROPERTY OF DIGITAL EQUIPMENT CORPORATION AND SHALL NOT BE REPRODUCED OR COPIED OR USED IN WHOLE OR IN PART AS THE BASIS FOR THE MANUFACTURE OR SALE OF ITEMS WITHOUT WRITTEN PERMISSION. COPYRIGHT © 1976 DIGITAL EQUIPMENT CORPORATION.	TITLE	ASSY NO.	SIZE	CODE	NUMBER	REV.
	DEC PAK INDEX SECTOR	D-UA-M7680-0-0	B	PL	M7680-0-0	B
		SHEET 1 OF 3	DIST.			

DIGITAL EQUIPMENT CORPORATION

PARTS LIST

ETCH REV B

QUANTITY / VARIATION

NOTES:

MADE BY K. HODGSON
 DATE 3 FEB 76
 ENG [Signature]
 DATE [Signature]

CHECKED [Signature]
 DATE 3 FEB 76
 PROD Jack [Signature]
 DATE 25 FEB 76

SECTION
 ISSUED SECTION

ITEM NO.	DRAWING NO.	PART NO.	DESCRIPTION	QUANTITY / VARIATION										REF. DESIGNATION	
				M7680-0	M7680-YA										
39	1910878-00		IC 7427	1	1										E4
40	1211164-00		SWITCH 4 IN A DIP	1	1										SW1
41	9008337-06		HANDLE FLIP CHIP-MAGENTA	2	1										
42	9006732-00		EYELET	4	4										
43			SPARE IC												E10
44	C-IA-7014164-0-0		CABLE ASSY, REMOTE SWITCH	-	1										SWC
45	1202704		CLAMP, CABLE	-	1										

E.C.O. NO.

THIS DRAWING AND SPECIFICATIONS, HEREIN, ARE THE PROPERTY OF DIGITAL EQUIPMENT CORPORATION AND SHALL NOT BE REPRODUCED OR COPIED OR USED IN WHOLE OR IN PART AS THE BASIS FOR THE MANUFACTURE OR SALE OF ITEMS WITHOUT WRITTEN PERMISSION. COPYRIGHT 1976 DIGITAL EQUIPMENT CORPORATION

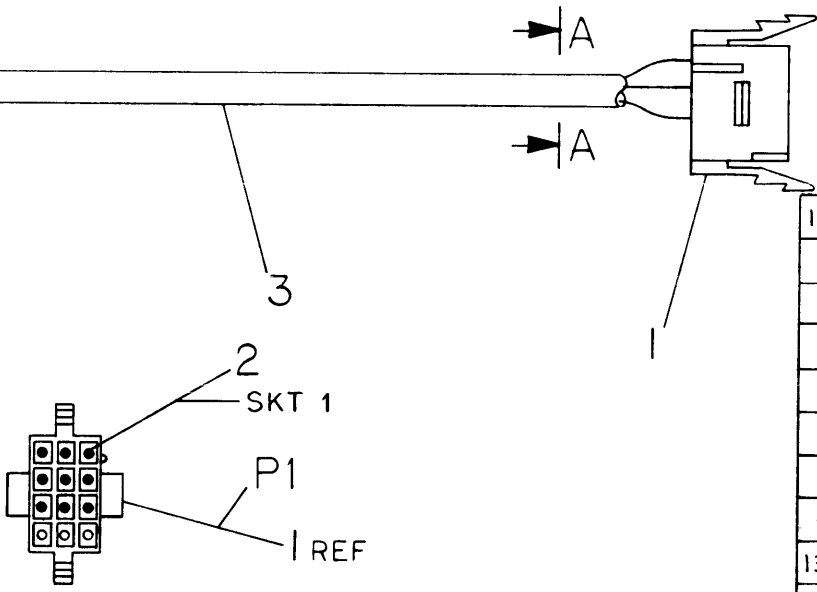
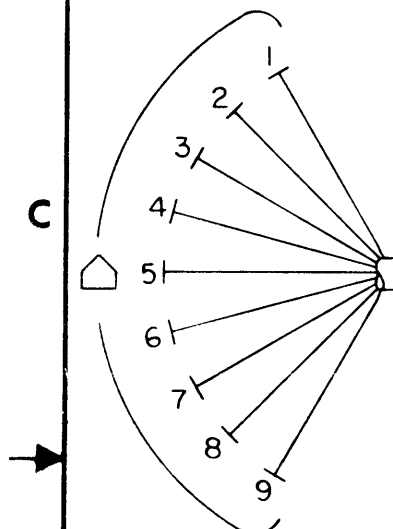
TITLE
 DEC PAK INDEX SECTOR

ASSY NO.
 D-UA-M7680-0-0
 SHEET 3 OF 3

SIZE B CODE PL NUMBER M7680-0-0 REV. B

"THIS DRAWING AND SPECIFICATIONS, HEREIN, ARE THE PROPERTY OF DIGITAL EQUIPMENT CORPORATION AND SHALL NOT BE REPRODUCED OR COPIED OR USED IN WHOLE OR IN PART AS THE BASIS FOR THE MANUFACTURE OR SALE OF ITEMS WITHOUT WRITTEN PERMISSION. COPYRIGHT © 1977, DIGITAL EQUIPMENT CORPORATION"

WIRE TABLE							
ITEM NO.	DESCRIPTION		FROM		TO		WIRE LGTH.
	AWG	COLOR	POINT	WITH	CONN	WITH	
4	22	RED	1	—	P1-1	2	13"
5	↑	BLK	2	—	P1-2	↑	↑
6	↑	BRN	3	—	P1-3	↑	↑
7	↑	ORN	4	—	P1-4	↑	↑
8	↑	YEL	5	—	P1-5	↑	↑
9	↑	GRN	6	—	P1-6	↑	↑
10	↑	BLU	7	—	P1-7	↑	↑
11	↓	VIO	8	—	P1-8	↓	↓
12	22	WHT	9	—	P1-9	2	13"



VIEW A-A

ITEM NO.	DESCRIPTION	DWG./PART NO.	ITEM NO.
12	13" WIRE, 22AWG, STRD (WHT)	9107350-99	12
11	↑ WIRE, 22AWG, STRD (VIO)	9107350-77	11
10	↑ WIRE, 22 AWG, STRD (BLU)	9107350-66	10
9	↑ WIRE, 22AWG, STRD (GRN)	9107350-55	9
8	↑ WIRE, 22 AWG, STRD (YEL)	9107350-44	8
7	↑ WIRE, 22 AWG, STRD (ORN)	9107350-33	7
6	↑ WIRE, 22 AWG, STRD (BRN)	9107350-11	6
5	↑ WIRE, 22 AWG, STRD (BLK)	9107350-00	5
4	↓ 13" WIRE, 22 AWG, STRD (RED)	9107350-22	4
3	10" TUBING, BLACK, 1/4" DIA.	9107243	3
2	9 SOCKET, MATE-N-LOK	1209379-03	2
1	13" WIRE, 22 AWG, STRD (WHT)	9107350-99	1
1	CONN. HOUSING 12 TERM	1209350-12	1

REV.	CHANGE NO.	DESCRIPTION
-	00001	ORIGINATED

QUANTITY & VARIATION		DESCRIPTION	DWG./PART NO.	ITEM NO.			
UNLESS OTHERWISE SPECIFIED DIMENSIONS ARE IN INCHES							
ANGLES ±0° 30'	CLASS OF ACCURACY (CHECK ONE)	NOMINAL DIMENSION RANGE INCHES					
SURFACE QUALITY IN		OVER 0 TO 0.2	OVER 0.2 TO 1.2	OVER 1.2 TO 4.0	OVER 4.0 TO 12.0	OVER 12.0 TO 40.0	OVER 40.0 TO 80.0
MEDIUM	<input type="checkbox"/>	±.004	±.008	±.012	±.016	±.024	±.04
PREFERRED	<input checked="" type="checkbox"/>	±.012	±.016	±.025	±.04	±.063	±.01
THIRD ANGLE PROJECTION	DRN. <i>Carl McCoy</i> <i>March 28, 1977</i>	FIRST USED ON					
REMOVE BURRS AND BREAK SHARP CORNERS	CHK'D <i>DCB</i> <i>April 19, 1977</i>	M7680					
DO NOT SCALE DWG	ENG. <i>J. Anderson</i> <i>April 19, 1977</i>	TITLE					
MATERIAL SEE PARTS LIST	PROJ. ENG. <i>J. Anderson</i> <i>April 19, 1977</i>	REMOTE SWITCH CABLE ASSY					
FINISH	PROD. <i>J. Anderson</i> <i>April 20, 1977</i>	NEXT HIGHER ASSY.					
	D-UA-M7680-0-0	SIZE CODE	NUMBER	REV.			
	SCALE 1/1	C IA	7014164-C-C				
	SHEET OF	DIST.					