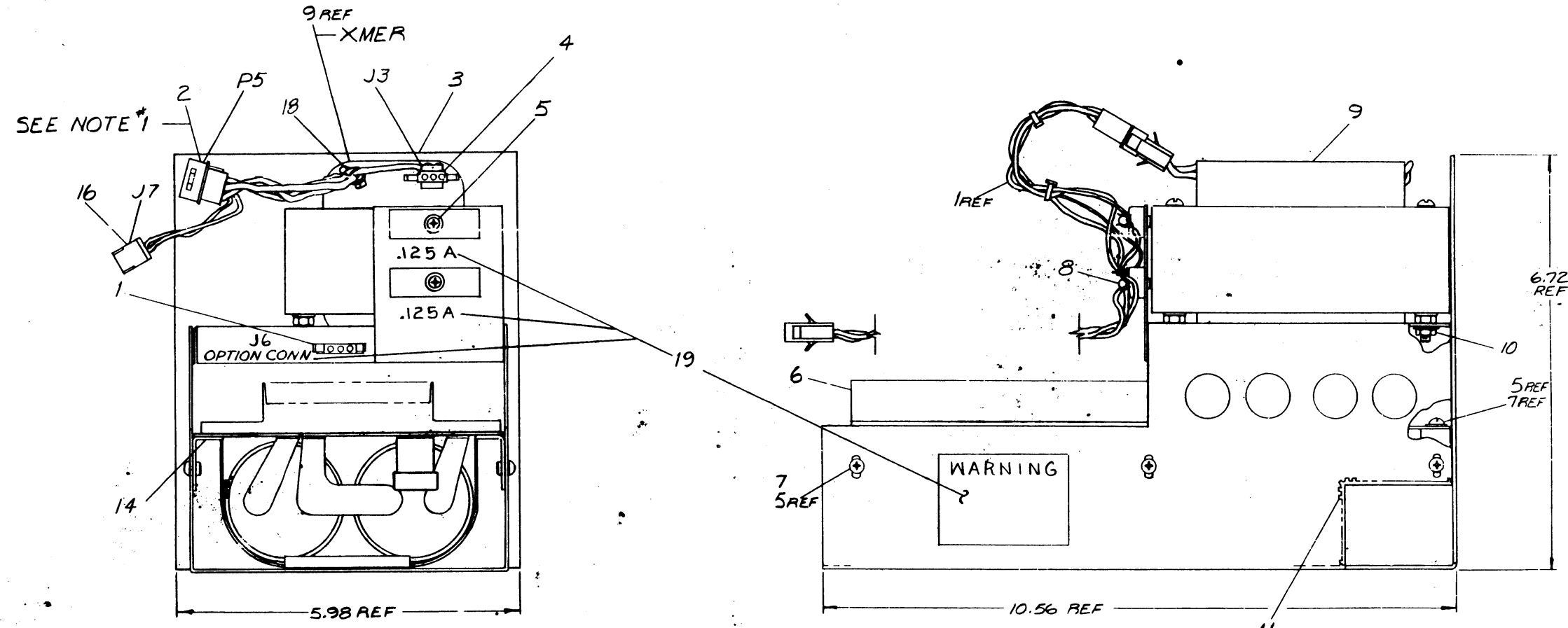


The drawing and specifications, herein, are the property of Digital Equipment Corporation and shall not be reproduced or copied or used in whole or in part as the basis for the manufacture or sale of items without written permission.

WIRE TABLE						
ITEM NO.	DESCRIPTION	FROM:	FROM:		TO:	
			CONNECTION	WITH	CONNECTION	WITH
9	BLU	XMER	-	J3-3	12	
				J3-2	12	
				J3-1	12	
				P5-3	13	
				P5-4	13	
9	WHT	-	-	P5-1	13	
				P5-2	13	
17	18	BLK	J7-1	12	P5-5	13
17	18	BLK	J7-2	12	P5-6	13

LENGTH OF WIRE TO BE 4 IN ± 1/2 IN

NOTES:
1. LENGTH OF WIRES TERMINATING TO P5 (ITEM 2), ARE TO BE 8 INCHES ± 1/2 INCH.



END VIEW WITH WIRES FROM ITEM #1 REMOVED

QTY.	DESCRIPTION	PART NO.	ITEM NO.
1	DECAL	A DC-709651-0-0	19
1	TIE WRAP PADUIT SST-18	9007031	18
A/R	WIRE 13 AWG TEF INS	9107360-00	17
1	CONN MATE-N-LOK (FEM)	1210821-02	16
1	STRAIN RELIEF	9008442	15
6	BRKT. SUPPORT ETCH BD	CIA-709925-0-0	14
6	CONTACT, MATE-N-LOK (MALE)	1209378-01	13
5	CONTACT, MATE-N-LOK (FEM)	1209379-01	12
A/R	SACCMET	9007621	11
4	NUT, KEP # 8-32	9006563	10
1	XMER (TRANSFORMER)	1610601-02	9
2	FUSE 1/8AMP (3AG) S.B.	9008527	8
12	WASHER, INT TOOTH LOCK #6	9006633	7
1	REGULATOR BD ASSY	E-1A-5A097280-0	6
10	SCR, PHIL PAN HD # 6-32 X 25	9006020-1	5
1	CONN, MATE-N-LOK 3 CKT	1209350-03	4
1	CHASSIS, P.S.	D-1A-7093160-0	3
1	CONN, MATE-N-LOK 6 CKT	1209351-06	2
1	HARNASS, SECONDARY	D-1A-7008534-00	1

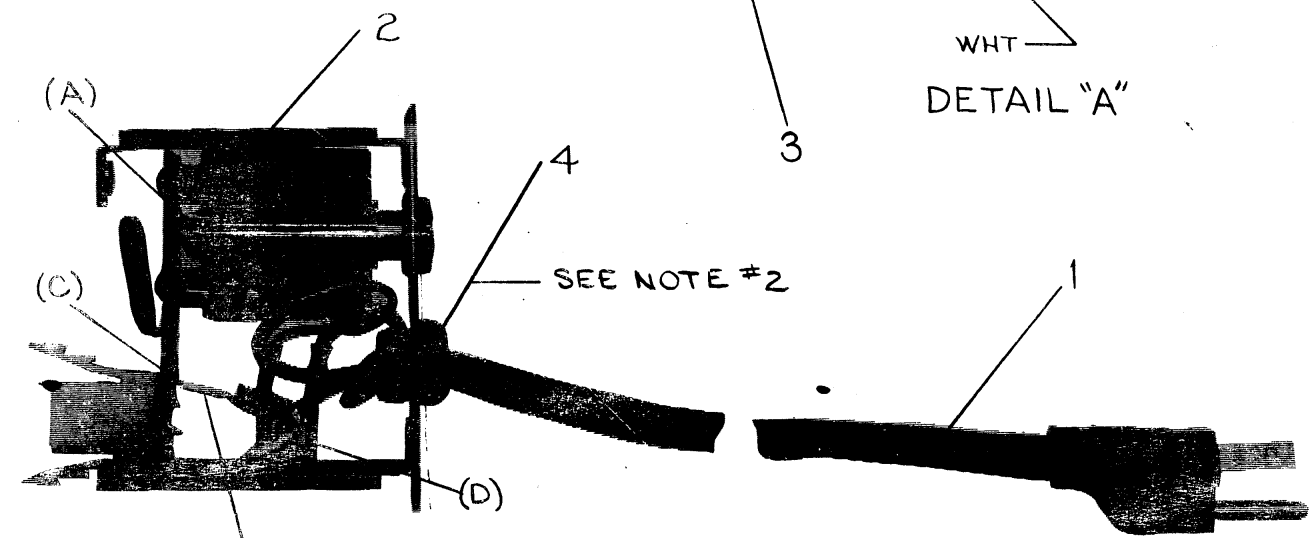
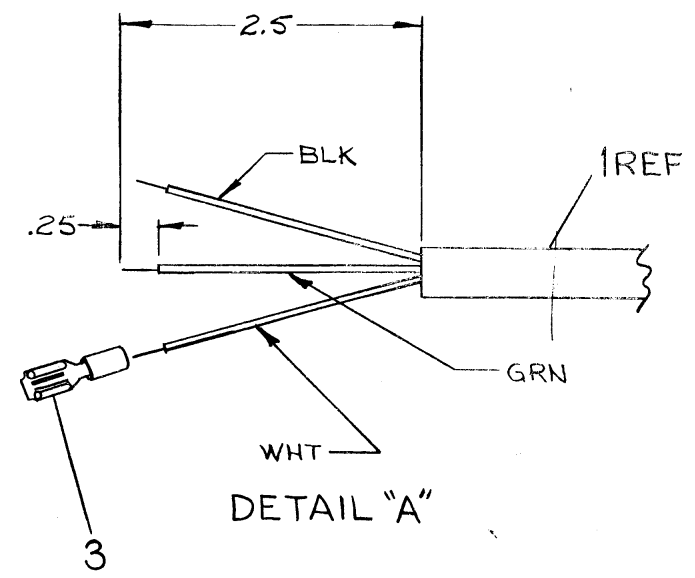
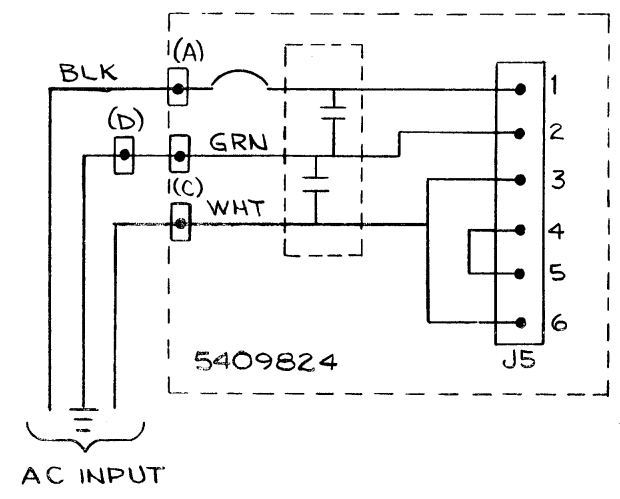
FIRST USED ON OPTION/MODEL		PARTS LIST	
PDP 8 M		TITLE	
UNLESS OTHERWISE SPECIFIED DIMENSION IN INCHES TOLERANCES		digital EQUIPMENT CORPORATION	
DECIMALS	ANGLES	POWER SUPPLY ASSY	
.XXX = .006	10° 30'	SIZE CODE NUMBER REV	
.XX = .02		DAD 7008714-0-0 A	
X = .1		SCALE NONE SHEET OF 1	
REMOVE BURRS AND BREAK SHARP CORNERS SURFACE QUALITY	PROD. DATE	DIST.	
	1-7-72		
MATERIAL	NEXT HIGHER ASSY.		
	D-1A-PDPBM-0-0		

REV.	CHANGE NO.	DATE	BY
1	7008714-00001 A	1-7-72	P. GARDNER
2	7008714-00002 B	2-1-72	P. GARDNER

erty of Digital Equipment Corporation and shall not be reproduced or copied or used in whole or in part as the basis for the manufacture or sale of items without written permission.

NOTES:

1. CONNECT ITEM #1 (POWER CORD) AND ITEM #2 (AC INPUT BOX) PER CIRCUIT SCHEMATIC.
2. FOR INSTALLATION USE HAYCO #29 STRAIN RELIEF PLIERS



SEE DETAIL 'A'
3 REF
SHOWN WITHOUT COVER

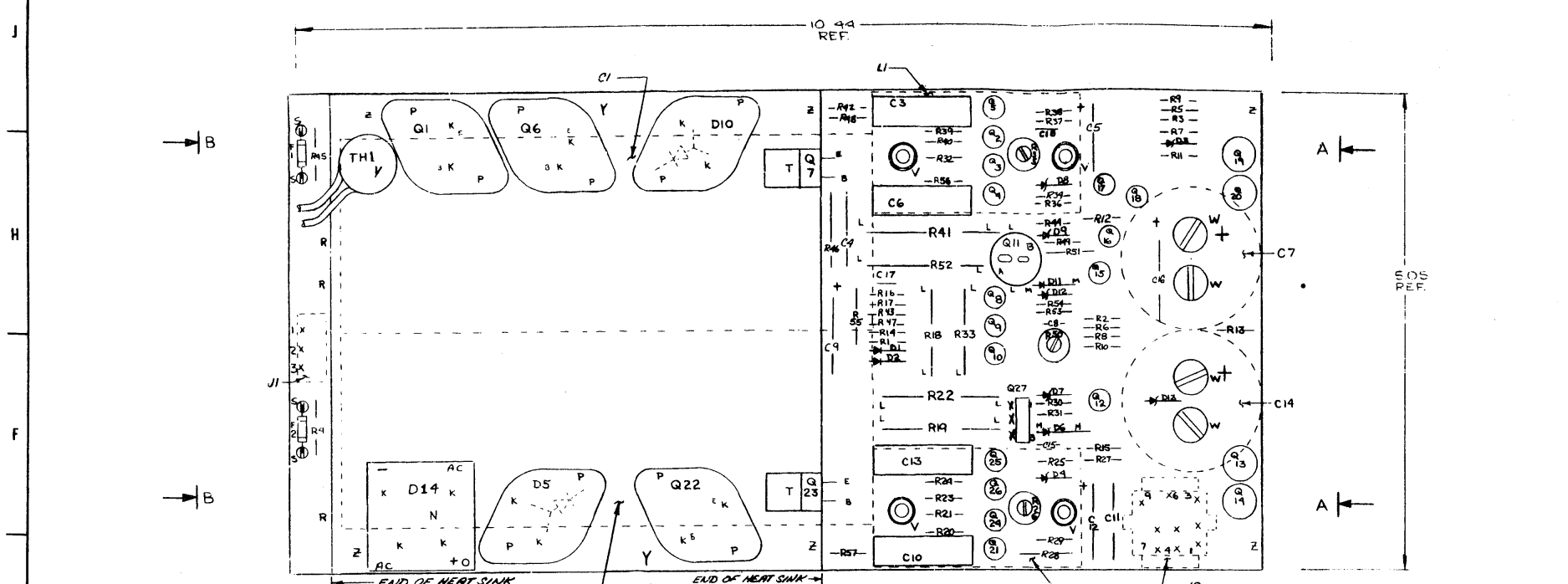
1	GROMMET HEYCO 6 P4	9007142	4
3	SOLDERLESS CONN. ARKLESS	9007917	3
1	AC INPUT BOX H400A	D-UA-H400-0-0	2
1	POWER CORD 120V	170015-6	1

FIRST USED ON OPTION/MODEL		QTY.	DESCRIPTION	PART NO.	ITEM NO.
11/05					
PARTS LIST					
UNLESS OTHERWISE SPECIFIED DIMENSION IN INCHES. TOLERANCES		DRN <i>T. Quillin</i>	DATE 12-27-71	digital EQUIPMENT CORPORATION MAYNARD MASSACHUSETTS TITLE LINE SET 115V AC 7 AMP	
DECIMALS	ANGLES	CHK'D <i>H. Antone</i>	DATE 1-8-72		
.XXX = .005	±0° 30'	ENG. <i>David DeMunnelle</i>	DATE 1-4-72		
.XX = .02		PROJ. ENG. <i>R. H. Harty</i>	DATE 1-7-72		
X = .1		PROD. <i>R.K. Petersen</i>	DATE 1/2/72		
REMOVE BURRS AND BREAK SHARP CORNERS SURFACE QUALITY ✓					
MATERIAL		NEXT HIGHER ASSY.			
FINISH		SCALE			
		SHEET 1 OF 1		SIZE CODE C UA	NUMBER BC05H-0-0

REVISIONS	REV.
CHANGE NO.	
CHK	

REV.	
NUMBER	BC05H-0-0
SIZE CODE	C UA

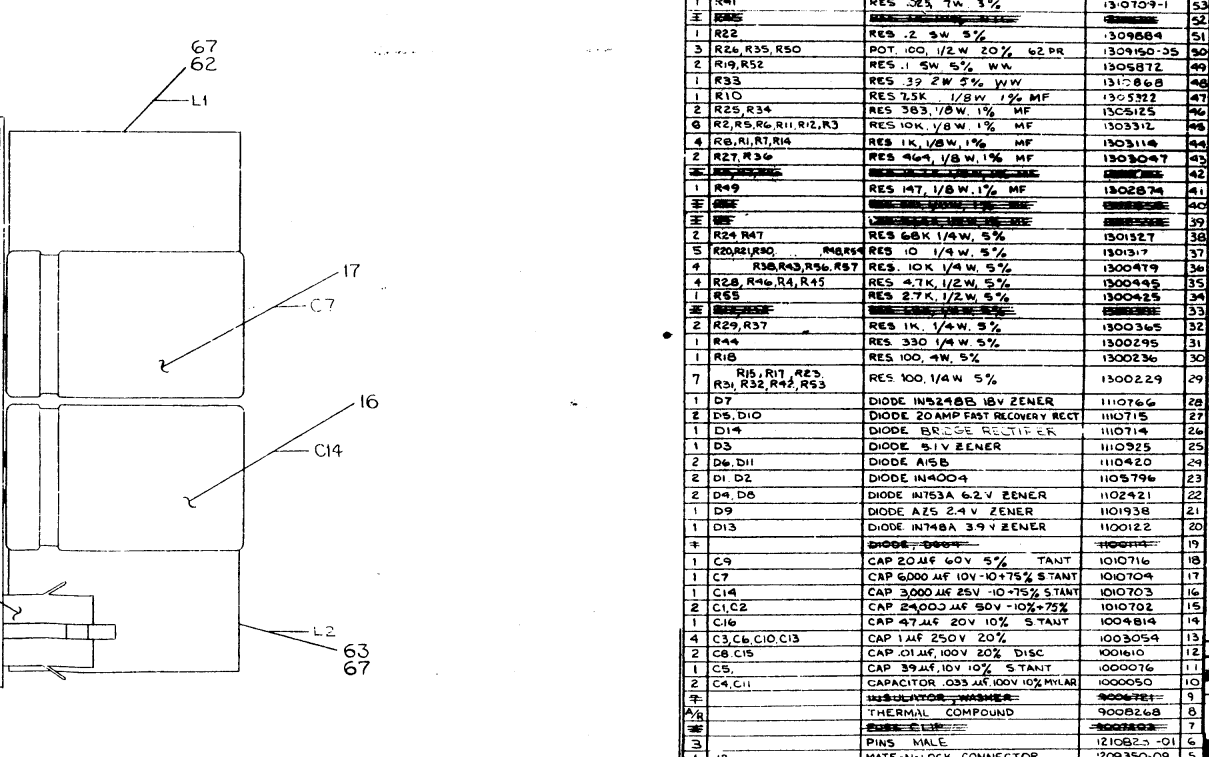
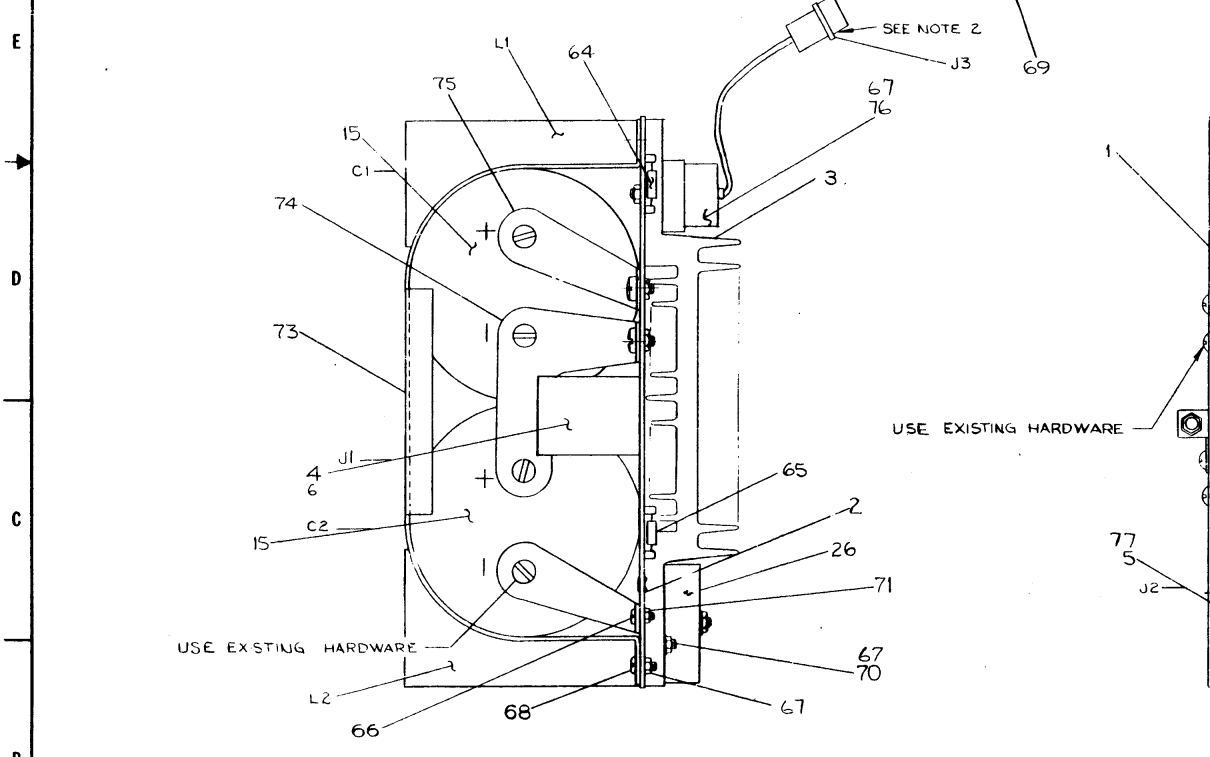
Use of this drawing is restricted to the project for which it was prepared. No part of this drawing may be reproduced or transmitted in any form or by any means, electronic, mechanical, photocopying, recording, or by any information storage and retrieval system, without the prior written permission of the manufacturer.



NOTE

1. APPLY ITEM #8 (THERMAL COMPOUND) BETWEEN TRANSISTOR AND INSULATOR, WASHERS ITEM #9, ALSO BETWEEN WASHER & HEAT SINK FOR Q1, Q6, Q7, Q22, Q23, DS400. INSULATOR WASHERS FOR Q7 & Q23 ARE TO BE 1/2" TO SIZE.
2. TRIM LEADS ON ITEM #7 (THERMOSTAT) TO .5 INCHES AND ATTACH ITEM #54 (PINS) AND ITEM #63 (HOUSING) AS SHOWN.

QTY	REF DESIGNATION	DESCRIPTION	PART NO.	ITEM NO.
1	R16	RES 6.8K 1/4W 5%	1301423	28
1	R17	RES 132A133	1302728	29
2	R9, R13	RES 470 1/4W 5%	1300376	35
1	R3	PAS 1/4W 1/4W 5%	259378	31
1	R4	MATE-N-LOCK CONNECTOR	1209351	5
1	D12	DIODE 1N5248 5.1V ZENER	110766	28
1	C12	CAP 10MF 20V 10% TANT	1004873	10
2	R39, R40	RES 5.1 1/4W 5%	1309422	29
9	PINS	PIN FEMALE	1209351	5
1	E1	THERMOSTAT	120824	70
2		CONTACT CAPACITOR	CND53278	30
1		CONTACT COMMON CAPACITOR	CND530979	30
1		HOLDER, CAPACITOR	C14-530978	31
1		NUT KEPS 4-40	9006557	71
1		SCR PHL PAN HD 6-32 3/4 LG	9004026	70
2		SCR PHL PAN HD 4-40X 1/2 LG	9004013	69
12		SCR TRUSS HD 6-32 X 9/16 LG	9007793	1
10		NUT KEPS #6 32 1/4	9006185	67
1	F2	SCR PHL PAN HD 4-40 X 5/16 LG	9006010	69
1	F1	FUSE 5AMP PICO	120877	65
1	L2	FUSE 15AMP PICO	120877	65
1	L1	CH-CKE 220UH 7A MM 4340	1410247	63
1	Q27	CH-CKE 100MH 20A MM 12780	60717	62
1	Q1	XSTR MAC 11.3	1510765	61
1	Q2	XSTR M1900	1510712	60
10	Q7, Q23	XSTR D45 HB D	1510708	59
10	Q2, Q3, Q5, Q8, Q9, Q15, Q16, Q17, Q18, Q26	XSTR GFS A85	1510705	57
6	Q10, Q11, Q12, Q24, Q25	XSTR GFS A85	1510705	57
2	Q14, Q22	XSTR 2N1302	1510196	56
2	Q19, Q29	XSTR 2N1309	1510311	55
2	Q13, Q20	TRANSISTOR 2N1308	1500583	54
1	R41	RES 25 1/4W 1%	1310709	53
1	R22	RES 2 5W 5%	1309584	51
3	R25, R35, R50	POT 100 1/2W 20% 62PR	13016035	38
2	R19, R52	RES 1 5W 5% WW	1305872	40
1	R33	RES 32 2W 5% WW	1312868	42
1	R10	RES 7.5K 1/8W 1% MF	1303322	47
2	R25, R34	RES 363 1/8W 1% MF	1305125	46
1	R2, R5, R6, R11, R12, R13	RES 10K 1/8W 1% MF	1303312	46
4	R8, R17, R14	RES 1K 1/8W 1% MF	1303118	44
2	R27, R36	RES 469 1/8W 1% MF	1303047	43
1	R49	RES 147 1/8W 1% MF	1302674	41
2	R24, R47	RES 6.8K 1/4W 5%	1301327	38
5	R20, R21, R30, R48, R49	RES 10 1/4W 5%	1301317	37
4	R38, R43, R46, R57	RES 10K 1/4W 5%	1300479	36
4	R28, R46, R47, R45	RES 4.7K 1/2W 5%	1300445	35
1	R65	RES 27K 1/2W 5%	1300425	34
2	R29, R37	RES 1K 1/4W 5%	1300365	32
1	R44	RES 330 1/4W 5%	1300295	31
1	R18	RES 100 4W 5%	1300236	30
7	R15, R17, R23, R24, R32, R42, R53	RES 100 1/4W 5%	1300229	29
1	D1	DIODE 1N5248B 18V ZENER	110766	28
2	D5, D10	DIODE 20AMP FAST RECOVERY RECT	110715	27
1	D14	DIODE BRIDGE RECTIFER	110714	26
1	D3	DIODE 5.1V ZENER	110925	25
2	D6, D11	DIODE 1A5B	110420	24
2	D1, D2	DIODE 1N4004	1105796	23
2	D4, D8	DIODE 1N75A 6.2V ZENER	1102421	22
1	D9	DIODE AZ5 2.4V ZENER	1101938	21
1	D13	DIODE 1N74A 3.9V ZENER	1100122	20
1	D19	DIODE 1N4001	1100088	19
1	C9	CAP 20MF 60V 5% TANT	1010716	18
1	C7	CAP 6000 MF 10V -10+75% STANT	1010704	17
1	C14	CAP 3000 MF 25V -10+75% STANT	1010703	16
2	C1, C2	CAP 2400 MF 50V -10+75%	1010702	15
1	C16	CAP 47 MF 20V 10% TANT	1004814	14
4	C3, C6, C10, C13	CAP 1MF 250V 20%	1003054	13
1	C8, C15	CAP .01MF 100V 20% DISC	1001610	12
1	C5	CAP 39 MF 10V 10% STANT	000076	11
2	C4, C11	CAPACITOR .033 MF 100V 10% MYLAR	1000050	10
1	WASHER	INSULATOR WASHER	9006781	9
1	WASHER	THERMAL COMPOUND	9008268	8
1	WASHER	INSULATOR WASHER	9006781	7
1	J2	PINS - MALE	1210823	6
1	J1	MATE-N-LOCK CONNECTOR	1209350-09	5
1	J1	MATE-N-LOCK CONNECTOR	1209351-03	4
1		HEAT SINK	1210596	3
4		SPLIT LUG	9006733	2
1		ETCHED BOARD	5004927	1
		MODULE ECO HISTORY	B MH 5409728-0	REF
		X-Y COORDINATE HOLE LOC.	KC 5409728-0	REF
		CIRCUIT SCHEMATIC	DCS-5409728-0	REF



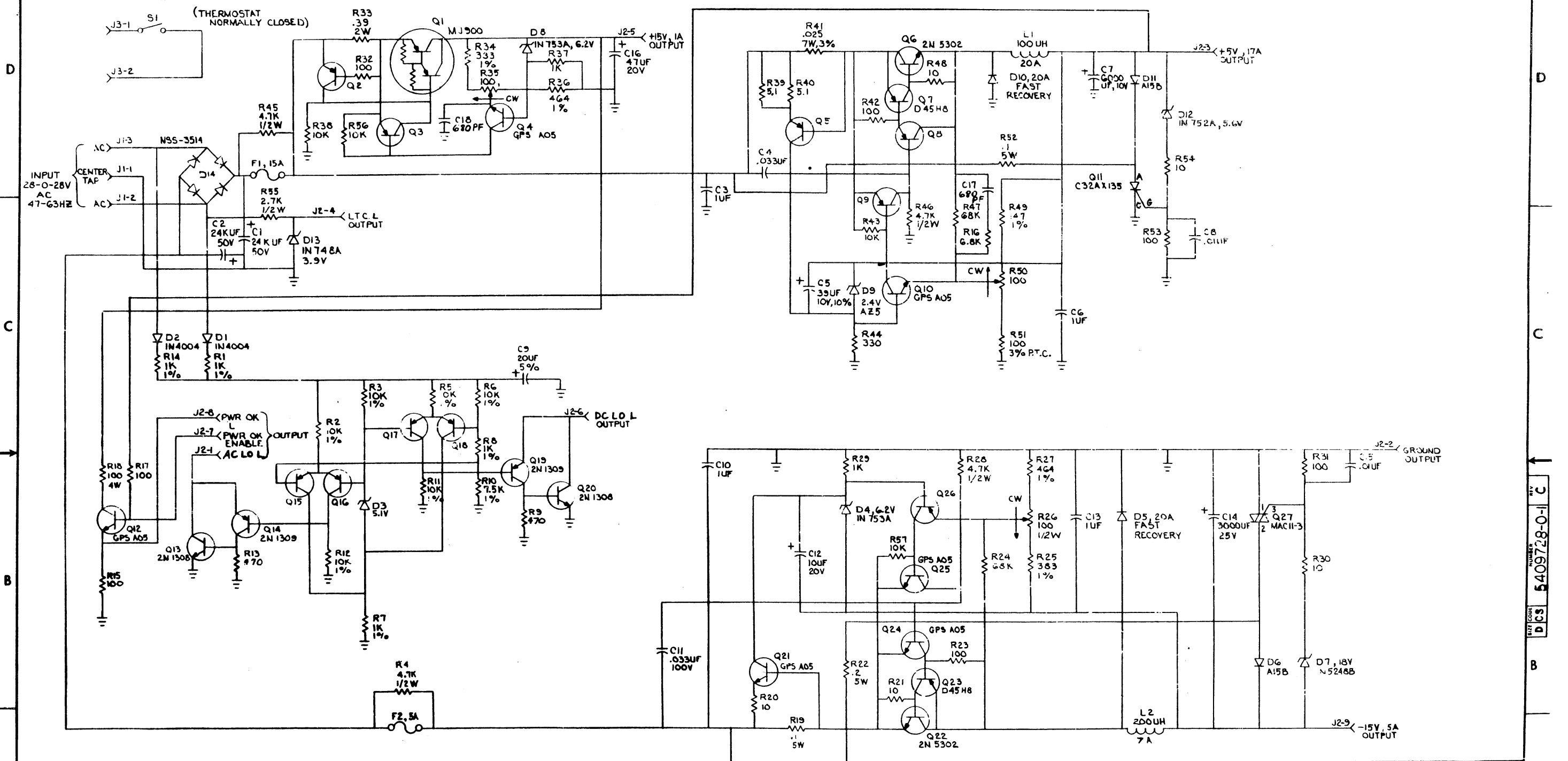
IC TYPE	GRID	+5V	ITEM NO	AWG	FROM PT	TO PT

QTY	REF DESIGNATION	DESCRIPTION	PART NO.	ITEM NO.
1	R51	RES 100 3% THERMI	1310927	93
2	C17, C18	CAP 6.80UF 100V DM	1000026	92
A/A				91
A/A				90
A/K				89

ETCH BOARD REV	C	PARTS LIST
DC NO	EIA NO	DC NO
EIA NO	DC NO	EIA NO
DEC NO	EIA NO	DEC NO
EIA NO	DEC NO	EIA NO
SCALE	2/1	
DATE	11/8/71	
BY	[Signature]	
CHECKED	[Signature]	
APPROVED	[Signature]	
REVISIONS		
DESCRIPTION	REGULATOR BOARD	
QUANTITY	1	
SCALE	1 OF 1	

This drawing and specifications, herein, are the property of Digital Equipment Corporation and shall not be reproduced or copied or used in whole or in part as the basis for the manufacture or sale of items without written permission.

5409728-0-1



UNLESS OTHERWISE INDICATED:
 1% RESISTORS ARE 1/8 W
 TRANSISTORS - GFS A55

QTY	REF DESIGNATION	DESCRIPTION	PART NO.	ITEM NO.													
PARTS LIST																	
ETCH BOARD REV B C																	
<table border="1"> <tr> <td>DRN. <i>R. WOLFF</i></td> <td>DATE 12-20-71</td> <td rowspan="6"> DIGITAL EQUIPMENT CORPORATION MAYNARD, MASSACHUSETTS </td> </tr> <tr> <td>CHKD. <i>AMARV MOORE</i></td> <td>DATE 12-21-71</td> </tr> <tr> <td>ENG. <i>R. WOLFF</i></td> <td>DATE 12-28-71</td> </tr> <tr> <td>PROL. ENG. <i>R. WOLFF</i></td> <td>DATE 12-29-71</td> </tr> <tr> <td>PROD. <i>R. WOLFF</i></td> <td>DATE 12-29-71</td> </tr> <tr> <td colspan="2">NEXT HIGHER ASSY</td> </tr> </table>					DRN. <i>R. WOLFF</i>	DATE 12-20-71	DIGITAL EQUIPMENT CORPORATION MAYNARD, MASSACHUSETTS	CHKD. <i>AMARV MOORE</i>	DATE 12-21-71	ENG. <i>R. WOLFF</i>	DATE 12-28-71	PROL. ENG. <i>R. WOLFF</i>	DATE 12-29-71	PROD. <i>R. WOLFF</i>	DATE 12-29-71	NEXT HIGHER ASSY	
DRN. <i>R. WOLFF</i>	DATE 12-20-71	DIGITAL EQUIPMENT CORPORATION MAYNARD, MASSACHUSETTS															
CHKD. <i>AMARV MOORE</i>	DATE 12-21-71																
ENG. <i>R. WOLFF</i>	DATE 12-28-71																
PROL. ENG. <i>R. WOLFF</i>	DATE 12-29-71																
PROD. <i>R. WOLFF</i>	DATE 12-29-71																
NEXT HIGHER ASSY																	
TITLE			REV. C														
REGULATOR BOARD FOR H740																	
SIZE CODE DCS		NUMBER 5409728-0-1		REV. C													

REV	CHANGE NO.	REVISIONS
1	1-19-72	R. WOLFF
2	1-20-72	R. WOLFF
3	1-21-72	R. WOLFF
4	1-22-72	R. WOLFF
5	1-23-72	R. WOLFF
6	1-24-72	R. WOLFF
7	1-25-72	R. WOLFF
8	1-26-72	R. WOLFF
9	1-27-72	R. WOLFF
10	1-28-72	R. WOLFF
11	1-29-72	R. WOLFF
12	1-30-72	R. WOLFF
13	1-31-72	R. WOLFF
14	1-32-72	R. WOLFF
15	1-33-72	R. WOLFF
16	1-34-72	R. WOLFF
17	1-35-72	R. WOLFF
18	1-36-72	R. WOLFF
19	1-37-72	R. WOLFF
20	1-38-72	R. WOLFF
21	1-39-72	R. WOLFF
22	1-40-72	R. WOLFF
23	1-41-72	R. WOLFF
24	1-42-72	R. WOLFF
25	1-43-72	R. WOLFF
26	1-44-72	R. WOLFF
27	1-45-72	R. WOLFF
28	1-46-72	R. WOLFF
29	1-47-72	R. WOLFF
30	1-48-72	R. WOLFF
31	1-49-72	R. WOLFF
32	1-50-72	R. WOLFF
33	1-51-72	R. WOLFF
34	1-52-72	R. WOLFF
35	1-53-72	R. WOLFF
36	1-54-72	R. WOLFF
37	1-55-72	R. WOLFF
38	1-56-72	R. WOLFF
39	1-57-72	R. WOLFF
40	1-58-72	R. WOLFF
41	1-59-72	R. WOLFF
42	1-60-72	R. WOLFF
43	1-61-72	R. WOLFF
44	1-62-72	R. WOLFF
45	1-63-72	R. WOLFF
46	1-64-72	R. WOLFF
47	1-65-72	R. WOLFF
48	1-66-72	R. WOLFF
49	1-67-72	R. WOLFF
50	1-68-72	R. WOLFF
51	1-69-72	R. WOLFF
52	1-70-72	R. WOLFF
53	1-71-72	R. WOLFF
54	1-72-72	R. WOLFF
55	1-73-72	R. WOLFF
56	1-74-72	R. WOLFF
57	1-75-72	R. WOLFF
58	1-76-72	R. WOLFF
59	1-77-72	R. WOLFF
60	1-78-72	R. WOLFF
61	1-79-72	R. WOLFF
62	1-80-72	R. WOLFF
63	1-81-72	R. WOLFF
64	1-82-72	R. WOLFF
65	1-83-72	R. WOLFF
66	1-84-72	R. WOLFF
67	1-85-72	R. WOLFF
68	1-86-72	R. WOLFF
69	1-87-72	R. WOLFF
70	1-88-72	R. WOLFF
71	1-89-72	R. WOLFF
72	1-90-72	R. WOLFF
73	1-91-72	R. WOLFF
74	1-92-72	R. WOLFF
75	1-93-72	R. WOLFF
76	1-94-72	R. WOLFF
77	1-95-72	R. WOLFF
78	1-96-72	R. WOLFF
79	1-97-72	R. WOLFF
80	1-98-72	R. WOLFF
81	1-99-72	R. WOLFF
82	1-100-72	R. WOLFF

SEMICONDUCTOR CONVERSION CHART

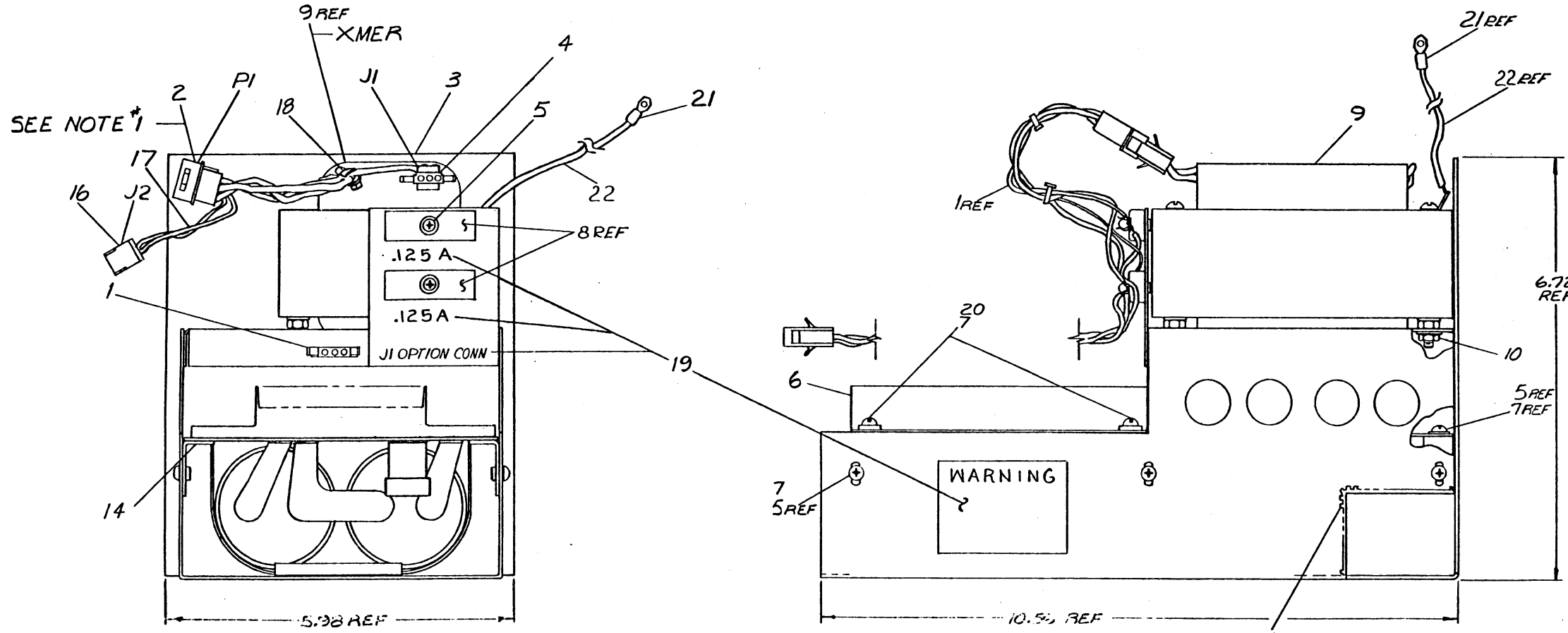
SHEET 1 OF 1

This drawing and specifications, herein, are the property of Digital Equipment Corporation and shall not be reproduced or copied or used in whole or in part as the basis for the manufacture or sale of items without written permission.

WIRE TABLE					
ITEM NO.	DESCR.	PLC	FROM:	TO:	
NO.	AVG	COLOR	CONNECTION	WITH	CONNECTION WITH
9		BLU	XMER	-	J1-3 12
		BLU		-	J1-2 12
		BLU		-	J1-1 12
		RED		-	PI-3 13
		YEL		-	PI-4 13
		WHT		-	PI-1 13
9		BLK	XMER	-	PI-2 13
17	18	BLK	J2-1	12	PI-5 13
17	18	BLK	J2-2	12	PI-6 13
22	18	GRN	XMER	SOLDEE	- 21

LENGTH OF WIRE TO BE 4 IN ± 1/2 IN

- NOTES:
1. LENGTH OF WIRES TERMINATING TO PS (ITEM 2), ARE TO BE 8 INCHES ± 1/2 INCH.
 2. COMPONENTS J1, J2, & PI, TO BE LABELED WITH COMPONENT IDENTIFIERS, USING BRADY MARKERS.



END VIEW WITH WIRES FROM ITEM #1 REMOVED

QTY	DESCRIPTION	PART NO.	ITEM NO.
1	WIRE 18 AWG GREEN	9107360-55	22
1	TERMINAL SOLDERLESS	9007927	21
4	SCR, PHIL PAN HD #6-32X.50	9006024-1	20
1	DECAL	A-DC-7409651-0-0	19
1	TIE WRAP PADUIT SST-18	9007031	18
A/R	WIRE 18 AWG BLK	9107360-00	17
1	CONN, MATE-N-LOK (FEM)	1210821-02	16
1	STRAIN, RELIEF	9008442	15
6	BRKT, SUPPORT ETCH BD	C-1A-7409375-0-0	14
6	CONTACT, MATE-N-LOK (MALE)	1209378-01	13
5	CONTACT, MATE-N-LOK (FEM)	1209379-01	12
A/R	GROMMET	9007621	11
4	NUT, KEP #8-32	9006563	10
1	XMER (TRANSFORMER)	1610601-02	9
2	FUSE 1/8AMP (3AG) S.B.	9008527	8
12	WASHER, INT TOOTH LOCK #6	9006633	7
1	REGULATOR BD ASSY	E-1A-54091280-0	6
10	SCR, PHIL PAN HD #6-32 X.25	9006020-1	5
1	CONN, MATE-N-LOK 3 CKT	1209350-03	4
1	CHASSIS, P.S.	D-1A-7409376-00	3
1	CONN, MATE-N-LOK 6 CKT	1209351-06	2
1	HARNESS, SECONDARY	D-1A-7008534-00	1

FIRST USED ON OPTION/MODEL		QTY.		DESCRIPTION		PART NO.		ITEM NO.	
PDP 8/1									
UNLESS OTHERWISE SPECIFIED DIMENSION IN INCHES TOLERANCES				DRM		DATE		PARTS LIST	
DECIMALS		ANGLES		CHKD		DATE		DIGITAL EQUIPMENT CORPORATION	
.XXX - .005		±0° 30'		ENG		DATE		MAYFORD MASSACHUSETTS	
.XX - .02				PROJ ENG		DATE		TITLE	
.X - .1				PROD		DATE		POWER SUPPLY ASSY	
REMOVE BURRS AND BREAK SHARP CORNERS SURFACE QUALITY				NEXT HIGHER ASSY.		D-1A-PDP8M-2-C		SIZE CODE	
MATERIAL				FINISH		SCALE NONE		NUMBER	
---				---		---		DAD 7008714-0-0	
FINISH				SHEET		OF 1		REV. C	

REV.	CHG	NO.	DATE	BY	CHKD
1		7008714-00001	A		
2		2-18-72	B	P. GARDNER	
3		2-26-72	C	P. GARDNER	
4		10-6-72		P. GARDNER	
5		12-2-72		P. GARDNER	