



digital

RX01
Engineering Drawings
Digital Equipment Corporation

The material herein is for information purposes only and is subject to change without notice. Digital Equipment Corporation assumes no responsibility for any errors which may appear herein.

These drawings and specifications herein are the property of Digital Equipment Corporation and shall not be reproduced or copied or used in whole or in part as the basis for the manufacture or sale of items without written permission.
Copyright © 1975, Digital Equipment Corporation

CUSTOMER PRINT SET INDEX

THIS IS PRINT SET

SEQUENCE

SEQUENCE

RX01 FLOPPY DISK DRIVE
FLOPPY DISK CONTROL BOARD

B-DD-RX01-0
D-CS-M7726-0-1

READ/WRITE CONTROL BOARD
H771 POWER SUPPLY

D-CS-M7727-0-1
B-DD-H771-0

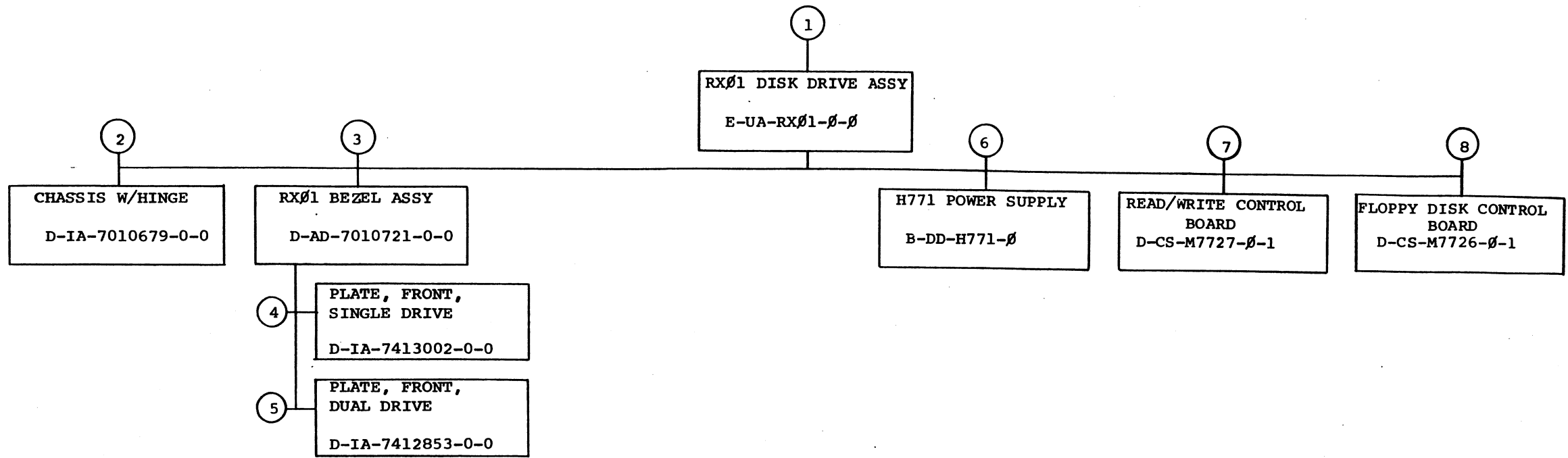
UNIT VARIATIONS

PRINT SET

| VAR | TITLE | | | |
|---------|----------------------------------|---|--|--|
| RX01-AA | SINGLE FLOPPY DISK, 115V, 60 HZ | X | | |
| RX01-AC | SINGLE FLOPPY DISK, LOW V, 50HZ | X | | |
| RX01-AD | SINGLE FLOPPY DISK, HIGH V, 50HZ | X | | |
| RX01-BA | DUAL FLOPPY DISK, 115V, 60 HZ | X | | |
| RX01-BC | DUAL FLOPPY DISK, LOW V, 50HZ | X | | |
| RX01-BD | DUAL FLOPPY DISK, HIGH V, 50HZ | X | | |
| RX01-CA | ONE REPLACE DRIVE, 60 HZ | X | | |
| RX01-CC | ONE REPLACE DRIVE, 50 HZ | X | | |
| RX01-DA | RX01-BA W/O BEZEL ASSY | X | | |
| RX01-DC | RX01-BC W/O BEZEL ASSY | X | | |
| RX01-DD | RX01-BD W/O BEZEL ASSY | X | | |
| | | | | |
| | | | | |
| | | | | |
| | | | | |
| | | | | |
| | | | | |
| | | | | |
| | | | | |
| | | | | |
| | | | | |
| | | | | |
| | | | | |
| | | | | |
| | | | | |
| | | | | |
| | | | | |
| | | | | |

DEC 16 (1325)-1062-1A-R972

| | | | | | | | | | | |
|---|--|--|--|----------------------------|------------------------|--|-------------------------|-------------------------|------------|------------|
| REVISIONS DATE CHG. NO. REV | | USED ON OPTION/MODEL RX8 RX11 | | DRN. W. McCarthy | DATE 2/3/75 | TITLE RX01 FLOPPY DISK DRIVE | NUMBER RX01-0 | | REV | |
| | | CHK'D. M. Corby | | DATE 5/29/75 | | | | | | |
| DATE | | PROJ ENG. P. [Signature] | | DATE 6/13/75 | DATE 6/13/75 | SIZE B | CODE DD | NUMBER RX01-0 | | REV |
| DATE | | PROD. [Signature] | | DATE 6/13/75 | DATE 6/13/75 | | | | | |
| DATE | | FIELD/SERV. [Signature] | | DATE 6/13/75 | DATE 6/13/75 | NUMBER RX01-0 | | REV | | |
| DATE | | FIELD/SERV. [Signature] | | DATE 6/13/75 | DATE 6/13/75 | NUMBER RX01-0 | | REV | | |
| DATE | | FIELD/SERV. [Signature] | | DATE 6/13/75 | DATE 6/13/75 | NUMBER RX01-0 | | REV | | |
| DATE | | FIELD/SERV. [Signature] | | DATE 6/13/75 | DATE 6/13/75 | NUMBER RX01-0 | | REV | | |
| DATE | | FIELD/SERV. [Signature] | | DATE 6/13/75 | DATE 6/13/75 | NUMBER RX01-0 | | REV | | |
| DATE | | FIELD/SERV. [Signature] | | DATE 6/13/75 | DATE 6/13/75 | NUMBER RX01-0 | | REV | | |
| DATE | | FIELD/SERV. [Signature] | | DATE 6/13/75 | DATE 6/13/75 | NUMBER RX01-0 | | REV | | |
| DATE | | FIELD/SERV. [Signature] | | DATE 6/13/75 | DATE 6/13/75 | NUMBER RX01-0 | | REV | | |
| DATE | | FIELD/SERV. [Signature] | | DATE 6/13/75 | DATE 6/13/75 | NUMBER RX01-0 | | REV | | |
| DATE | | FIELD/SERV. [Signature] | | DATE 6/13/75 | DATE 6/13/75 | NUMBER RX01-0 | | REV | | |
| DATE | | FIELD/SERV. [Signature] | | DATE 6/13/75 | DATE 6/13/75 | NUMBER RX01-0 | | REV | | |
| DATE | | FIELD/SERV. [Signature] | | DATE 6/13/75 | DATE 6/13/75 | NUMBER RX01-0 | | REV | | |
| DATE | | FIELD/SERV. [Signature] | | DATE 6/13/75 | DATE 6/13/75 | NUMBER RX01-0 | | REV | | |
| DATE | | FIELD/SERV. [Signature] | | DATE 6/13/75 | DATE 6/13/75 | NUMBER RX01-0 | | REV | | |
| DATE | | FIELD/SERV. [Signature] | | DATE 6/13/75 | DATE 6/13/75 | NUMBER RX01-0 | | REV | | |
| DATE | | FIELD/SERV. [Signature] | | DATE 6/13/75 | DATE 6/13/75 | NUMBER RX01-0 | | REV | | |
| DATE | | FIELD/SERV. [Signature] | | DATE 6/13/75 | DATE 6/13/75 | NUMBER RX01-0 | | REV | | |
| DATE | | FIELD/SERV. [Signature] | | DATE 6/13/75 | DATE 6/13/75 | NUMBER RX01-0 | | REV | | |
| DATE | | FIELD/SERV. [Signature] | | DATE 6/13/75 | DATE 6/13/75 | NUMBER RX01-0 | | REV | | |
| DATE | | FIELD/SERV. [Signature] | | DATE 6/13/75 | DATE 6/13/75 | NUMBER RX01-0 | | REV | | |
| DATE | | FIELD/SERV. [Signature] | | DATE 6/13/75 | DATE 6/13/75 | NUMBER RX01-0 | | REV | | |
| DATE | | FIELD/SERV. [Signature] | | DATE 6/13/75 | DATE 6/13/75 | NUMBER RX01-0 | | REV | | |
| DATE | | FIELD/SERV. [Signature] | | DATE 6/13/75 | DATE 6/13/75 | NUMBER RX01-0 | | REV | | |
| DATE | | FIELD/SERV. [Signature] | | DATE 6/13/75 | DATE 6/13/75 | NUMBER RX01-0 | | REV | | |
| DATE | | FIELD/SERV. [Signature] | | DATE 6/13/75 | DATE 6/13/75 | NUMBER RX01-0 | | REV | | |
| DATE | | FIELD/SERV. [Signature] | | DATE 6/13/75 | DATE 6/13/75 | NUMBER RX01-0 | | REV | | |
| DATE | | FIELD/SERV. [Signature] | | DATE 6/13/75 | DATE 6/13/75 | NUMBER RX01-0 | | REV | | |
| DATE | | FIELD/SERV. [Signature] | | DATE 6/13/75 | DATE 6/13/75 | NUMBER RX01-0 | | REV | | |
| DATE | | FIELD/SERV. [Signature] | | DATE 6/13/75 | DATE 6/13/75 | NUMBER RX01-0 | | REV | | |
| DATE | | FIELD/SERV. [Signature] | | DATE 6/13/75 | DATE 6/13/75 | NUMBER RX01-0 | | REV | | |
| DATE | | FIELD/SERV. [Signature] | | DATE 6/13/75 | DATE 6/13/75 | NUMBER RX01-0 | | REV | | |
| DATE | | FIELD/SERV. [Signature] | | DATE 6/13/75 | DATE 6/13/75 | NUMBER RX01-0 | | REV | | |
| DATE | | FIELD/SERV. [Signature] | | DATE 6/13/75 | DATE 6/13/75 | NUMBER RX01-0 | | REV | | |
| DATE | | FIELD/SERV. [Signature] | | DATE 6/13/75 | DATE 6/13/75 | NUMBER RX01-0 | | REV | | |
| DATE | | FIELD/SERV. [Signature] | | DATE 6/13/75 | DATE 6/13/75 | NUMBER RX01-0 | | REV | | |
| DATE | | FIELD/SERV. [Signature] | | DATE 6/13/75 | DATE 6/13/75 | NUMBER RX01-0 | | REV | | |
| DATE | | FIELD/SERV. [Signature] | | DATE 6/13/75 | DATE 6/13/75 | NUMBER RX01-0 | | REV | | |
| DATE | | FIELD/SERV. [Signature] | | DATE 6/13/75 | DATE 6/13/75 | NUMBER RX01-0 | | REV | | |
| DATE | | FIELD/SERV. [Signature] | | DATE 6/13/75 | DATE 6/13/75 | NUMBER RX01-0 | | REV | | |
| DATE | | FIELD/SERV. [Signature] | | DATE 6/13/75 | DATE 6/13/75 | NUMBER RX01-0 | | REV | | |
| DATE | | FIELD/SERV. [Signature] | | DATE 6/13/75 | DATE 6/13/75 | NUMBER RX01-0 | | REV | | |
| DATE | | FIELD/SERV. [Signature] | | DATE 6/13/75 | DATE 6/13/75 | NUMBER RX01-0 | | REV | | |
| DATE | | FIELD/SERV. [Signature] | | DATE 6/13/75 | DATE 6/13/75 | NUMBER RX01-0 | | REV | | |
| DATE | | FIELD/SERV. [Signature] | | DATE 6/13/75 | DATE 6/13/75 | NUMBER RX01-0 | | REV | | |
| DATE | | FIELD/SERV. [Signature] | | DATE 6/13/75 | DATE 6/13/75 | NUMBER RX01-0 | | REV | | |
| DATE | | FIELD/SERV. [Signature] | | DATE 6/13/75 | DATE 6/13/75 | NUMBER RX01-0 | | REV | | |
| DATE | | FIELD/SERV. [Signature] | | DATE 6/13/75 | DATE 6/13/75 | NUMBER RX01-0 | | REV | | |
| DATE | | FIELD/SERV. [Signature] | | DATE 6/13/75 | DATE 6/13/75 | NUMBER RX01-0 | | REV | | |
| DATE | | FIELD/SERV. [Signature] | | DATE 6/13/75 | DATE 6/13/75 | NUMBER RX01-0 | | REV | | |
| DATE | | FIELD/SERV. [Signature] | | DATE 6/13/75 | DATE 6/13/75 | NUMBER RX01-0 | | REV | | |
| DATE | | FIELD/SERV. [Signature] | | DATE 6/13/75 | DATE 6/13/75 | NUMBER RX01-0 | | REV | | |
| DATE | | FIELD/SERV. [Signature] | | DATE 6/13/75 | DATE 6/13/75 | NUMBER RX01-0 | | REV | | |
| DATE | | FIELD/SERV. [Signature] | | DATE 6/13/75 | DATE 6/13/75 | NUMBER RX01-0 | | REV | | |
| DATE | | FIELD/SERV. [Signature] | | DATE 6/13/75 | DATE 6/13/75 | NUMBER RX01-0 | | REV | | |
| DATE | | FIELD/SERV. [Signature] | | DATE 6/13/75 | DATE 6/13/75 | NUMBER RX01-0 | | REV | | |
| DATE | | FIELD/SERV. [Signature] | | DATE 6/13/75 | DATE 6/13/75 | NUMBER RX01-0 | | REV | | |
| DATE | | FIELD/SERV. [Signature] | | DATE 6/13/75 | DATE 6/13/75 | NUMBER RX01-0 | | REV | | |
| DATE | | FIELD/SERV. [Signature] | | DATE 6/13/75 | DATE 6/13/75 | NUMBER RX01-0 | | REV | | |
| DATE | | FIELD/SERV. [Signature] | | DATE 6/13/75 | DATE 6/13/75 | NUMBER RX01-0 | | REV | | |
| DATE | | FIELD/SERV. [Signature] | | DATE 6/13/75 | DATE 6/13/75 | NUMBER RX01-0 | | REV | | |
| DATE | | FIELD/SERV. [Signature] | | DATE 6/13/75 | DATE 6/13/75 | NUMBER RX01-0 | | REV | | |
| DATE | | FIELD/SERV. [Signature] | | DATE 6/13/75 | DATE 6/13/75 | NUMBER RX01-0 | | REV | | |
| DATE | | FIELD/SERV. [Signature] | | DATE 6/13/75 | DATE 6/13/75 | NUMBER RX01-0 | | REV | | |
| DATE | | FIELD/SERV. [Signature] | | DATE 6/13/75 | DATE 6/13/75 | NUMBER RX01-0 | | REV | | |
| DATE | | FIELD/SERV. [Signature] | | DATE 6/13/75 | DATE 6/13/75 | NUMBER RX01-0 | | REV | | |



| TITLE | SHEET | OF | SIZE | CODE | NUMBER | REV |
|------------------------|---------|------|------|------|--------|-----|
| RX01 FLOPPY DISK DRIVE | SHEET 2 | OF 3 | B | DD | RX01-0 | |

| CUSTOMER PRINT SET | | MECHANICAL | | | | | CUSTOMER PRINT SET | | ELECTRICAL | | | | | |
|--------------------|----------|------------|------------------|-----|-----------|---------------------------------|--------------------|----------|------------|------------------|-----|-----------|------------------------------|----------------------|
| | MFG. SET | FIND NO. | DRAWING NO. | REV | NO OF SHT | OPTION NO./FILE DATE | | MFG. SET | FIND NO. | DRAWING NO. | REV | NO OF SHT | DESCRIPTION | OPTION NO./FILE DATE |
| | | 1 | E-UA-RX01-0-0 | | 5 | RX01 FLOPPY DISK DRIVE ASSY | X | | 1 | B-DD-RX01-0 | # | 3 | RX01 FLOPPY DISK DRIVE | |
| | | | A-PL-RX01-0-0 | | 2 | RX01 FLOPPY DISK DRIVE ASSY(PI) | | | | A-PI-3700185-0-0 | | 2 | PACKAGING INSTRUCTIONS | |
| | | | E-IA-7412666-0-0 | | 1 | COVER, TOP | | | | A-PI-3700193-0-0 | | | CUST. PACKAGING INSTRUCTIONS | |
| | | | D-IA-7010646-0-0 | | 1 | CABLE, EXTENSION, RX01 | | | | | | | | |
| | | | C-IA-7008612-0-0 | | 1 | CABLE, KEYBOARD | | | | | | | | |
| | | | D-UA-BC05L-0-0 | | 1 | CABLE, JUMPER | | | | | | | | |
| | | | D-IA-7010696-0-0 | | 1 | HARNESS, VOLTAGE VARIATION | | | | | | | | |
| | | | C-MD-7413350-0-0 | | 1 | BRACKET, SHIPPING, RX01 | | | | | | | | |
| | | | C-MD-7409479-0-0 | | 1 | PLATE, PRESSURE | | | | | | | | |
| | | | C-MD-5509081-0-0 | | 1 | PANEL, LIGHT (RX01) | | | | | | | | |
| | | 2 | D-IA-7010679-0-0 | | 1 | CHASSIS W/HINGE | | | | | | | | |
| | | | E-IA-7412665-0-0 | | 1 | CHASSIS, FLEXIBLE DISK DRIVE | | | | | | | | |
| | | | C-MD-7413236-0-0 | | 1 | HINGE, LOGIC | | | | | | | | |
| | | 3 | D-AD-7010721-0-0 | | 1 | RX01 BEZEL ASSY | X | | 7 | D-CS-M7727-0-1 | * | 6 | READ/WRITE CONTROL BOARD | |
| | | | E-MD-7412664-0-0 | | 1 | BEZEL, RX01 | | | | D-IA-5011370-0-0 | | 1 | ETCHED CIRCUIT BOARD (M7727) | |
| | | | A-DC-7413429-0-0 | | 1 | LOGO, RX01 | | | | | | | | |
| | | 4 | D-IA-7413002-0-0 | | 1 | PLATE, FRONT, SINGLE DRIVE | X | | 8 | D-CS-M7726-0-1 | # | 9 | FLOPPY DISK CONTROL BOARD | |
| | | | C-SS-7413002-0-1 | | 1 | SILK SCREEN, SINGLE DRIVE | | | | A-SP-M7726-0-7 | | 3 | ACCEPTANCE TEST PROCEDURE | |
| | | 5 | D-IA-7412853-0-0 | | 1 | PLATE, FRONT, DUAL DRIVES | | | | | | | | |
| | | | C-SS-7412853-0-1 | | 1 | SILK SCREEN, DUAL DRIVE | | | | | | | | |
| C | | 6 | B-DD-H771-0 | * | 3 | H771 POWER SUPPLY | | | | | | | | |

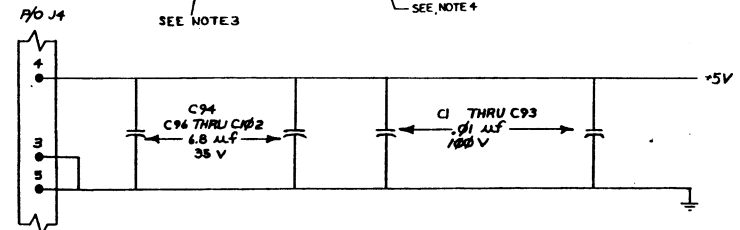
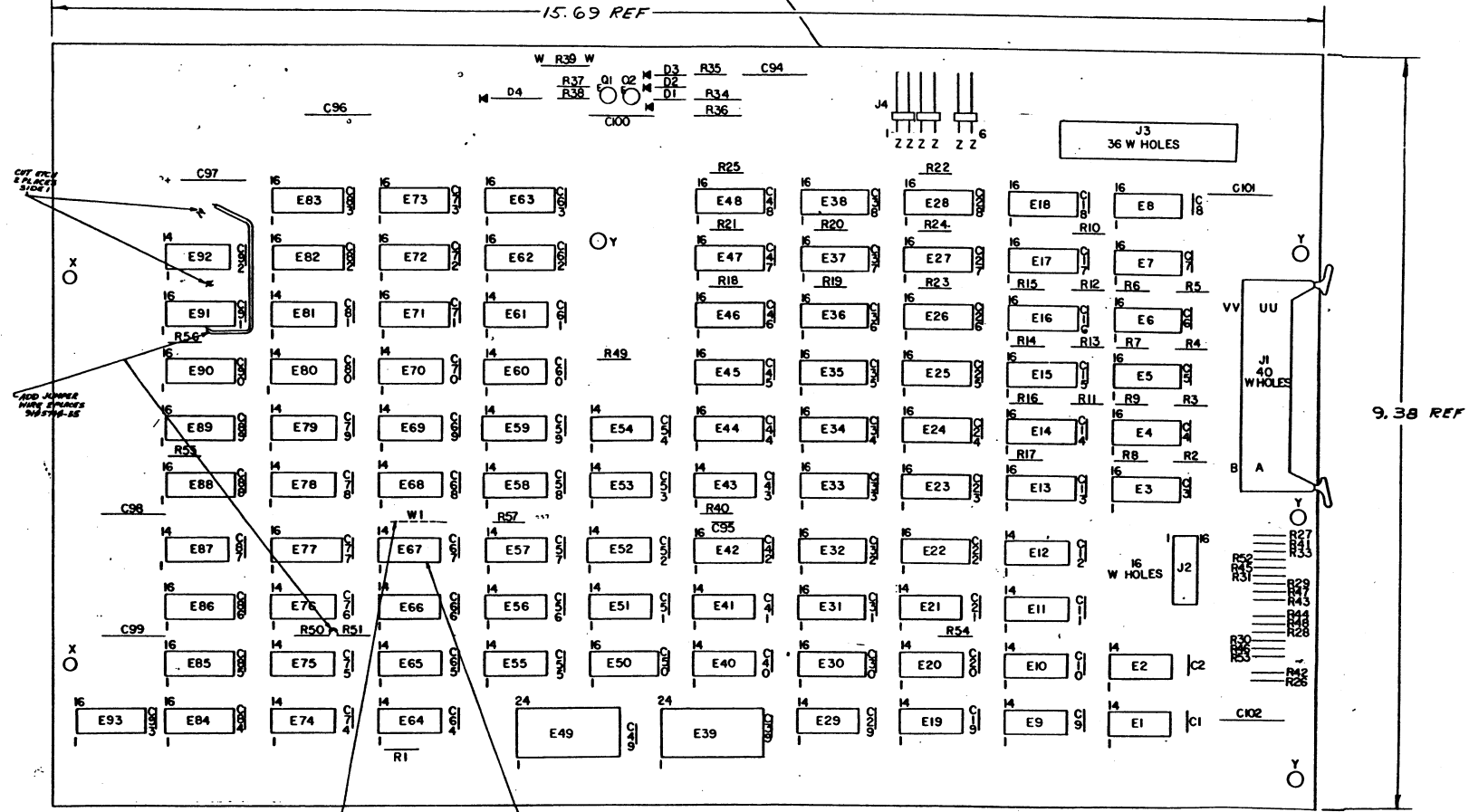
CUSTOMER PRINT SET CODES
X = PRINT OF DOCUMENT INCLUDED IN PRINT SET
C = INCLUDES ALL PRINTS INDICATED ON DOCUMENT
S = CONFIDENTIAL AUTHORIZED SIGNATURE REQUIRED

TITLE
RX01 FLOPPY DISK DRIVE
SHEET 3 OF 3
SIZE CODE B DD
NUMBER RX01-0
REV

"THIS DRAWING AND SPECIFICATIONS, HEREIN, ARE THE PROPERTY OF DIGITAL EQUIPMENT CORPORATION AND SHALL NOT BE REPRODUCED OR COPIED OR USED IN WHOLE OR IN PART AS THE BASIS FOR THE MANUFACTURE OR SALE OF ITEMS WITHOUT WRITTEN PERMISSION.
 COPYRIGHT © 1974 DIGITAL EQUIPMENT CORPORATION"

NOTES:

1. \odot REPRESENTS A 1/8 DIA PAD LOCATED ON SIDE 2 UNLESS OTHERWISE SPECIFIED
2. A. ALL RESISTORS ARE 1/4W, $\pm 5\%$
 B. ALL UNUSED PINS FOR J1 ARE TIED TO GND
3. INSTALL JUMPER W1 AFTER MODULE TEST
4. MOUNT E67 1/4" ABOVE SURFACE OF MODULE



| | | |
|----------|-----|-----|
| 23-XYXA2 | 8 | 16 |
| 2102 | 9 | 10 |
| 8640 | 1 | 8 |
| 74175 | 8 | 16 |
| 74174 | 8 | 16 |
| 74161 | 8 | 16 |
| 74194 | 8 | 16 |
| 74123 | 8 | 16 |
| 74H103 | 11 | 4 |
| 74H106 | 13 | 5 |
| 7489 | 8 | 16 |
| 74150 | 12 | 24 |
| 7442 | 8 | 16 |
| 8266 | 8 | 16 |
| 74193 | 8 | 16 |
| 74154 | 12 | 24 |
| IC TYPE | GND | +5V |

GND AND 5V ARE USUALLY PIN 7 AND 14 RESPECTIVELY EXCEPTIONS ARE STATED ABOVE
 IC PIN LOCATIONS

REVISIONS
 P. KOTSCHENTER
 M7726-00001
 M7726-00002
 M7726-00003
 M7726-00004
 M7726-00005
 M7726-00006
 M7726-00007
 M7726-00008
 M7726-00009
 M7726-00010

| | | | | |
|--|------------------|-------------|----------|----------|
| QTY | REF. DESIGNATION | DESCRIPTION | PART NO. | ITEM NO. |
| FIRST USED ON OPTION MODEL M7726 | | | | |
| ETCH BOARD REV. B | | | | |
| PARTS LIST | | | | |
| DATE 11/27/74 DATE 11/29/75 DATE 11/12/75 DATE 11/27/75 | | | | |
| digital | | | | |
| TITLE FLOPPY DISK CONTROLLER | | | | |
| SCALE 1 OF 9 | | | | |
| SEMICONDUCTOR CONVERSION CHART | | | | |
| SIZE CODE NUMBER REV. D CS M7726-0-1 C | | | | |

DRAWN BY: P. KOTSCHENTER
 CHECKED BY: P. KOTSCHENTER
 DATE: 11/27/74
 DATE: 11/29/75
 DATE: 11/12/75
 DATE: 11/27/75
 DCS M7726-0-1