

CUSTOMER PRINT SET INDEX

THIS IS PRINT SET

SEQUENCE

MM8-1 PRINT SET

BLOCK DIAGRAM E-BD-MM8-E-1
 4K XY DRIVER E-CS-G227-0-1
 STACK BOARD E-CS-G619-0-1
 SENSE INHIBIT (4K) E-CS-G104-0-1
 MEMORY ASSY (4K) D-UA-MM8-E-0
 MEMORY ASSY (PL) A-PL-MM8-E-0
 STACK 4K 12 BIT D-UA-H220-0-0
 ACCESSORY LIST A-AL-MM8-E-3
 MM8-E ACCEPTANCE PROCEDURE A-SP-7665139-0-0

SEQUENCE

MM8-2 PRINT SET

BLOCK DIAGRAM E-BD-MM8-EJ-5
 8K XY DRIVER E-CS-G233-0-1
 8K SENSE INHIBIT E-CS-G111-0-1
 8K STACK SCHEMATIC E-CS-H212-0-1
 MEMORY (8K) D-UA-MM8-EJ-0
 ACCESSORY LIST A-AL-MM8-E-3
 12 BIT STACK BOARD D-CS-G646-0-1
 MM8-EJ & MM8-EH ACCEPTANCE PROCEDURE (F.S.) A-SP-MM8-EJ-1
 8K OR 4K SENSE INHIBIT E-CS-G115-0-1
 8K OR 4K X-Y DRIVER E-CS-G234-0-1
 ENGINEERING SPECIFICATION A-SP-MM8-EJ-4

MM8-3 PRINT SET

BLOCK DIAGRAM E-BD-MM8-EJ-5
 ACCESSORY LIST A-AL-MM8-E-3
 12 BIT STACK BOARD D-CS-G646-0-1
 MM8-EJ & MM8-EH ACCEPTANCE PROCEDURE (F.S.) A-SP-MM8-EJ-1
 4K 12 BIT MEMORY D-UA-MM8-EH-0
 4K STACK SCHEMATIC E-CS-H211-0-1
 8K OR 4K SENSE INHIBIT E-CS-G115-0-1
 8K OR 4K X-Y DRIVER E-CS-G234-0-1
 ENGINEERING SPECIFICATION A-SP-MM8-EJ-4

MFG SET

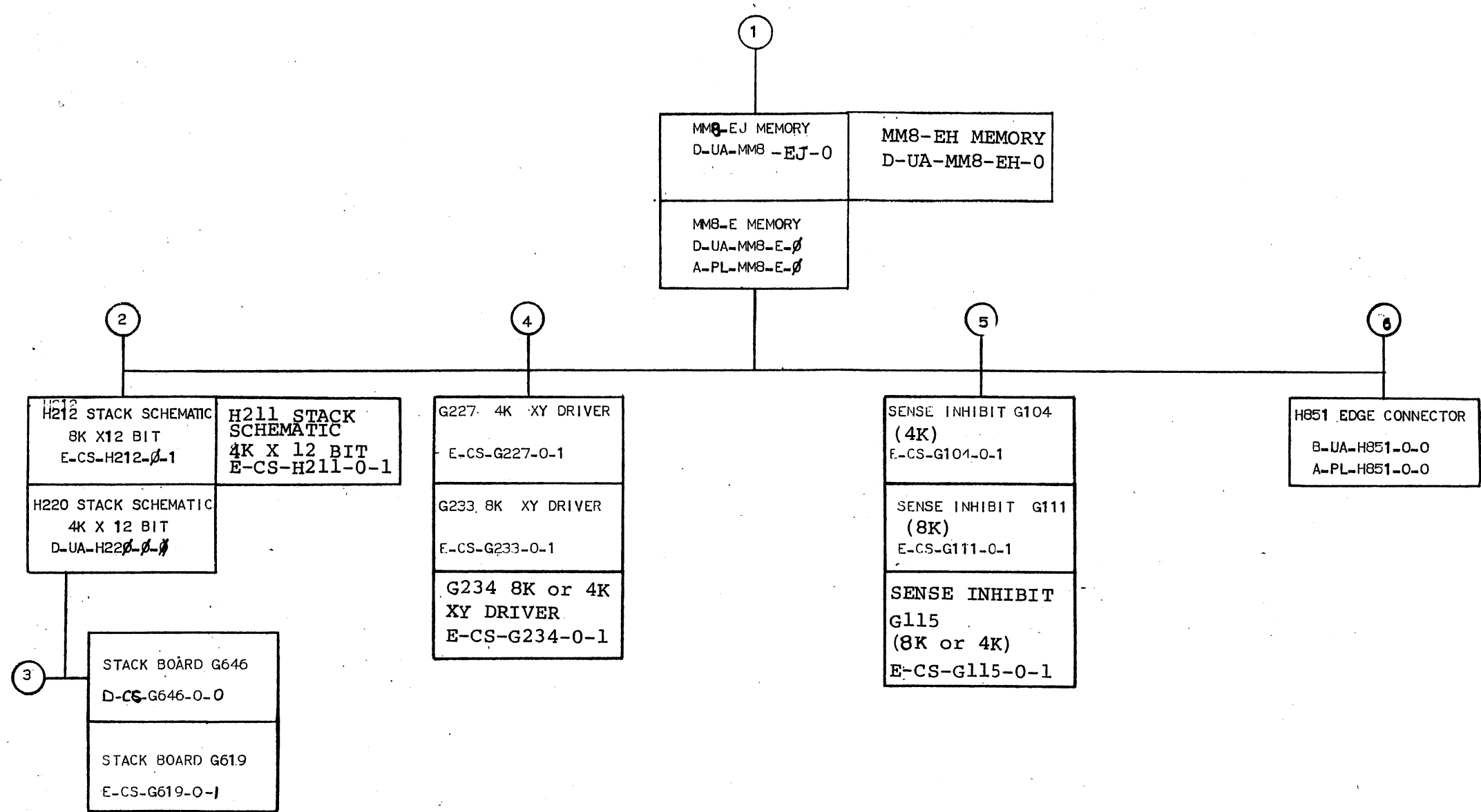
MANUFACTURING PROC. A-SP-MM8-E-2
 MM8-EJ & MM8-EH MANUFACTURING PROCEDURE (ON LINE) A-SP-MM8-EJ-2
 MM8-EJ & MM8-EH TEST PROCEDURE (OFF LINE) A-SP-MM8-EJ-3
 PURCHASE SPEC. A-PS-3010654-0-0
 PURCHASE SPEC. A-PS-8009834-0-0

VAR	TITLE	PRINT SET		
		MM8-1	MM8-2	MM8-3
MM8-E	4K 12 BIT MEMORY	X		
MM8-EJ	8K 12 BIT MEMORY		X	
MM8-EH	4K 12 BIT MEMORY			X

REVISIONS	REV	A	B
	CHG. NO.	MM8EJ-1	MM8E-5
DATE	WJC	L.G.	

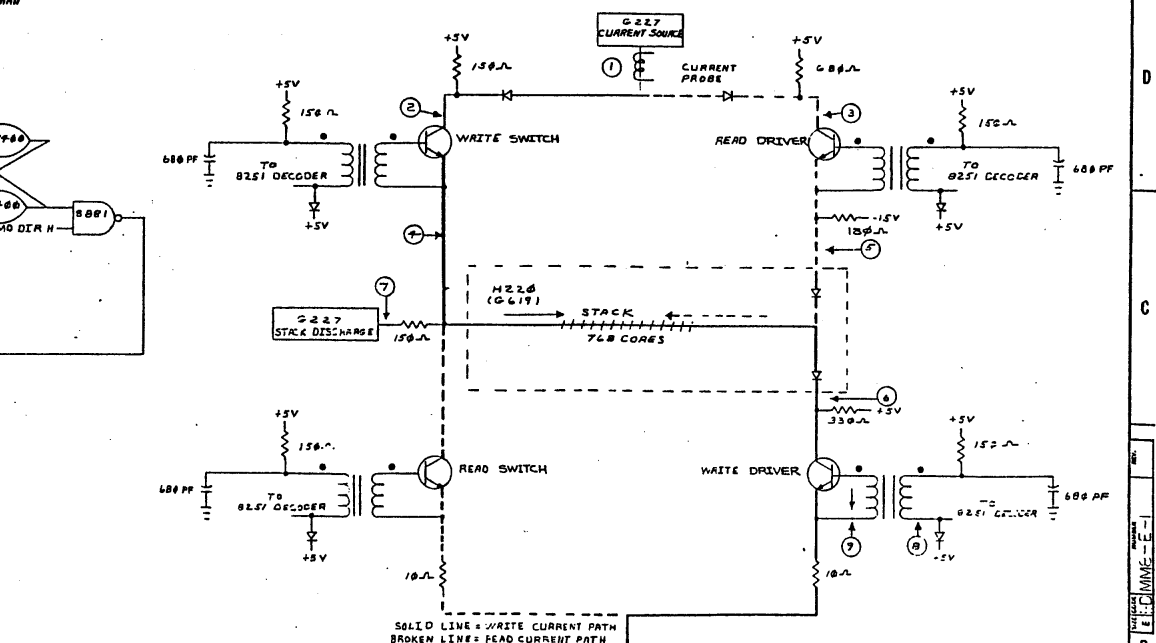
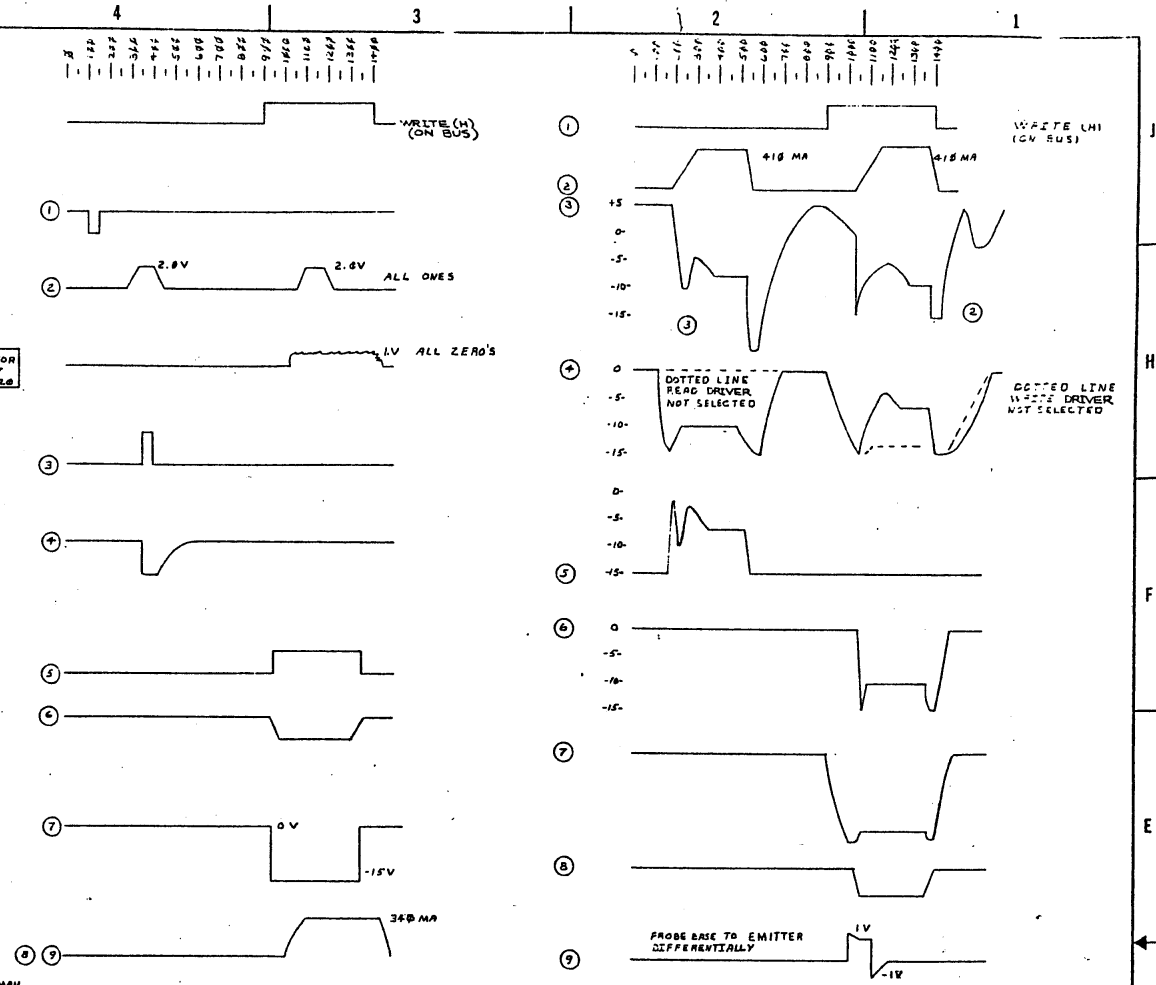
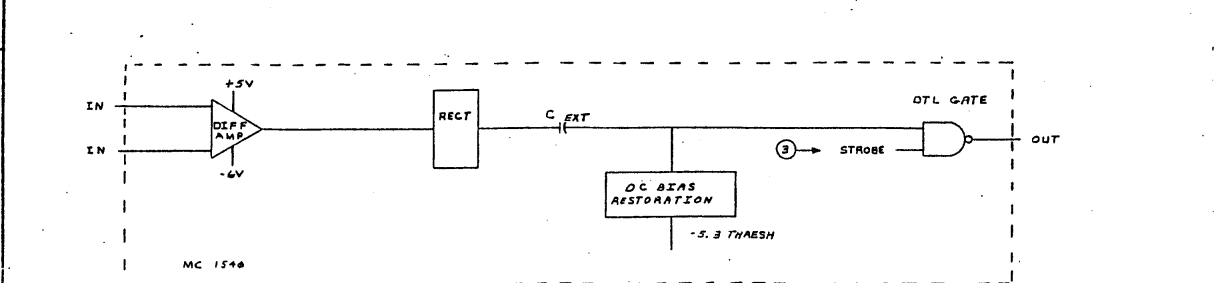
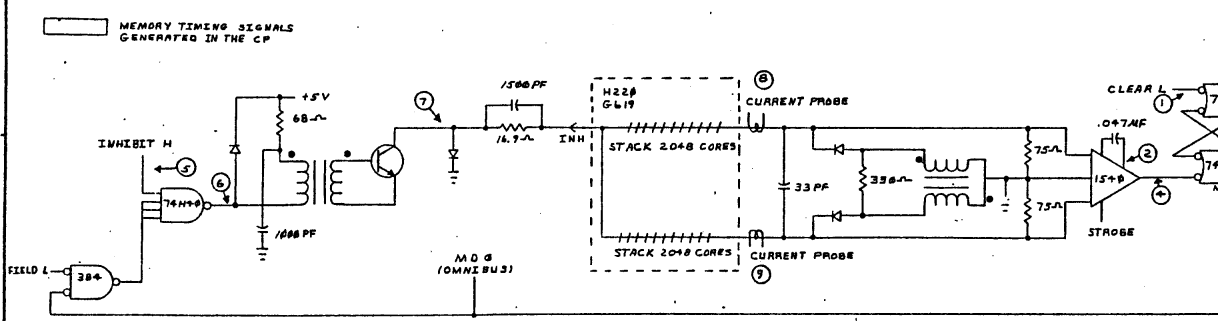
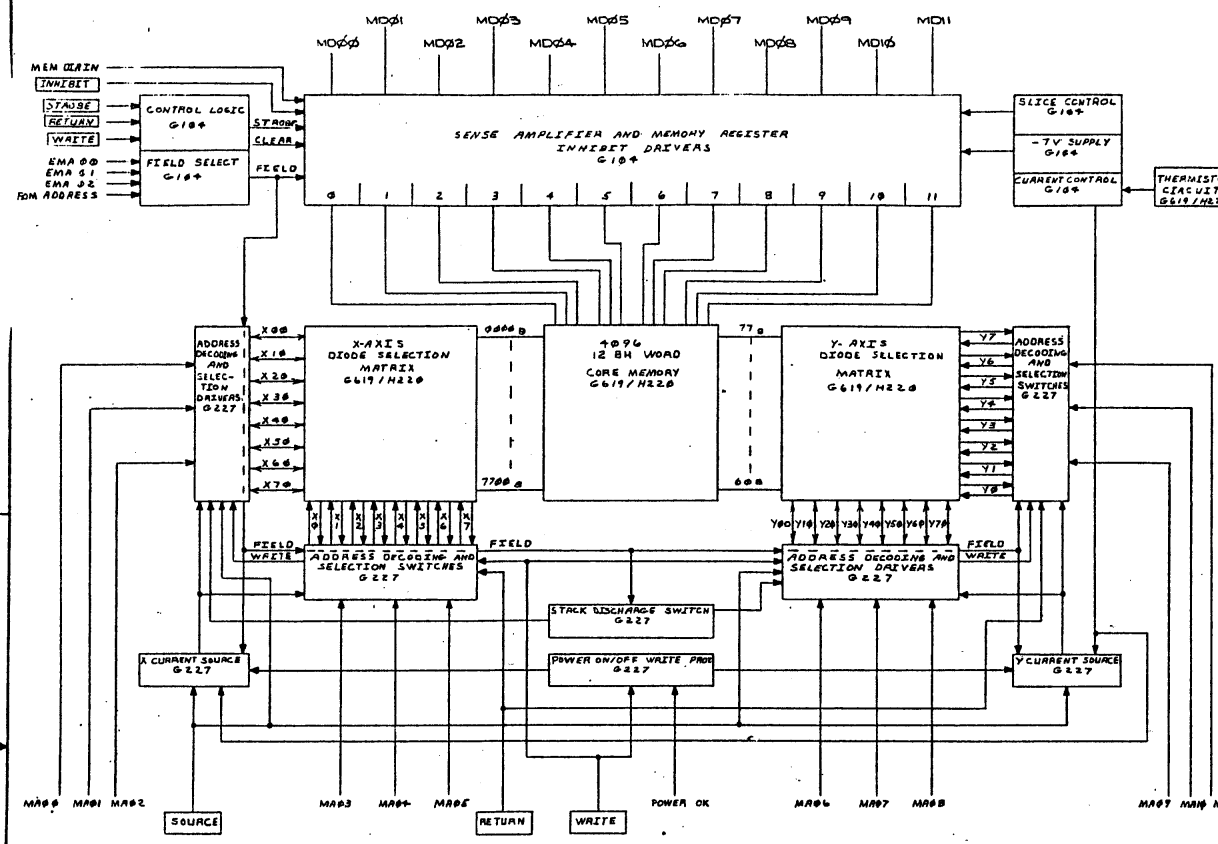
USED ON OPTION/MODEL	DRN. F. CARBERRY	DATE 2-17-72	TITLE MEMORY DRAWING DIRECTORY			
	CHK'D. J. KALAGHER	DATE 6-6-72				
	PROJ ENG. W. COATES	DATE 6-21-72				
	PROD. W. COATES	DATE 6-21-72	SIZE	CODE	NUMBER	REV
	FIELD SERV. W. COATES	DATE 6-21-72	B	DD	MM8-E	B
SHEET 1 OF 3			DIST	G		

DEC 16 13251-1062-1A-R972



TITLE	SHEET	SIZE	CODE	NUMBER	REV
MEMORY	2 OF 3	B	DD	MM8-E	B

The drawing and specifications herein are the property of Digital Equipment Corporation and shall not be reproduced, in whole or in part, or stored in a retrieval system, without the prior written permission of Digital Equipment Corporation.



REV.	DESCRIPTION	DATE	BY	CHKD.	DATE	BY	CHKD.	DATE	BY	CHKD.	DATE
1	ISSUED FOR FAB	11/15/68	W. J. B.	W. J. B.	11/15/68	W. J. B.	W. J. B.	11/15/68	W. J. B.	W. J. B.	11/15/68

REV.	DESCRIPTION	DATE	BY	CHKD.	DATE	BY	CHKD.	DATE	BY	CHKD.	DATE
1	ISSUED FOR FAB	11/15/68	W. J. B.	W. J. B.	11/15/68	W. J. B.	W. J. B.	11/15/68	W. J. B.	W. J. B.	11/15/68

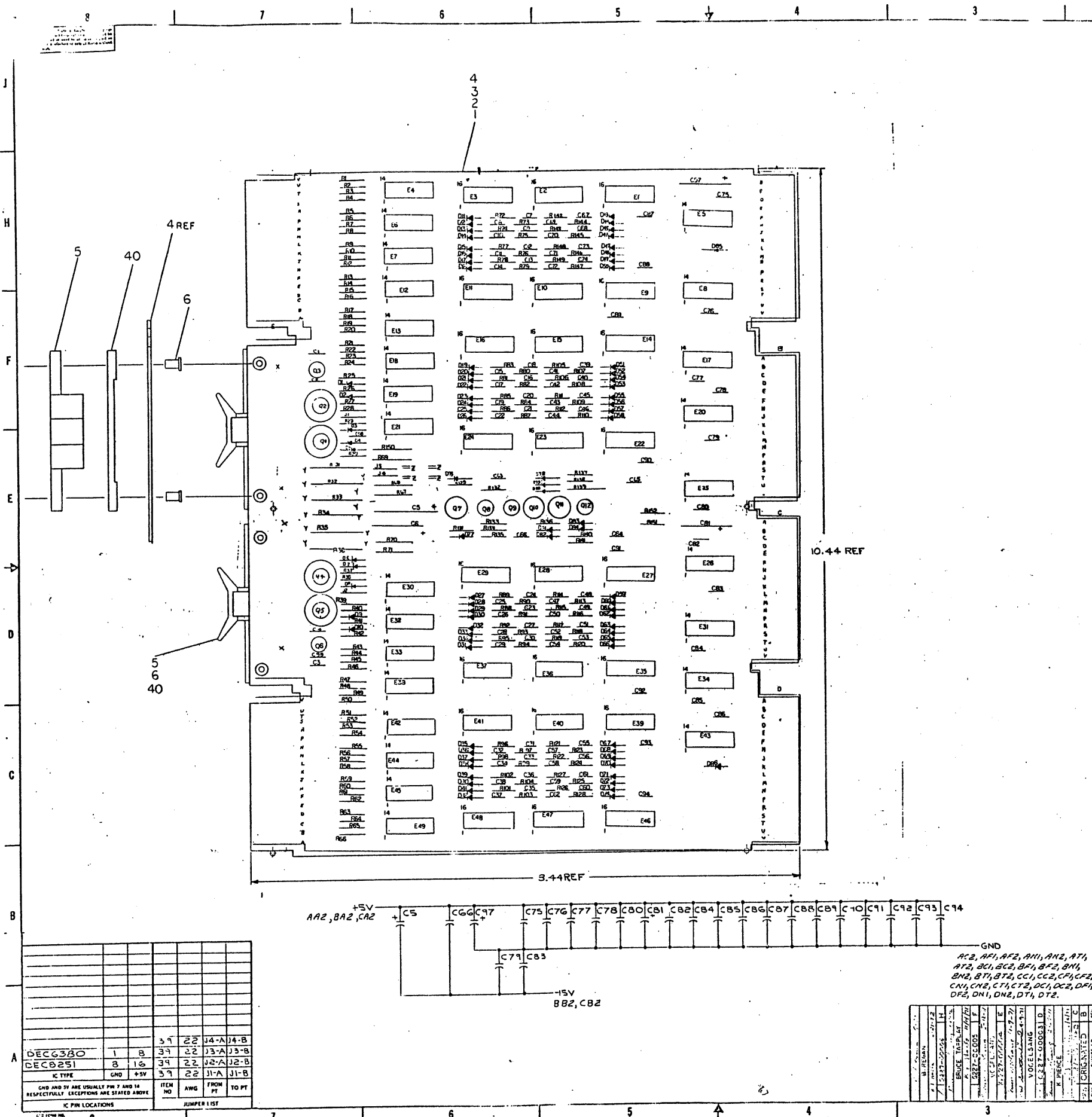
REV.	DESCRIPTION	DATE	BY	CHKD.	DATE	BY	CHKD.	DATE	BY	CHKD.	DATE
1	ISSUED FOR FAB	11/15/68	W. J. B.	W. J. B.	11/15/68	W. J. B.	W. J. B.	11/15/68	W. J. B.	W. J. B.	11/15/68

REV.	DESCRIPTION	DATE	BY	CHKD.	DATE	BY	CHKD.	DATE	BY	CHKD.	DATE
1	ISSUED FOR FAB	11/15/68	W. J. B.	W. J. B.	11/15/68	W. J. B.	W. J. B.	11/15/68	W. J. B.	W. J. B.	11/15/68

REVISIONS
 CHANGE NO.
 REV.

REV. 11/15/68

REV. 11/15/68



NOTES

4	R1, R3, R5, R7, R9, R12, R14, R15, R22, R24, R26, R29, R30, R31, R34, R36	SPLIT LUGS	9006735	48
16	R2, R4, R6, R8, R10, R11, R13, R16, R18, R20, R21, R23, R25, R27, R28, R32, R33, R35, R37, R38, R40	RES. 180 1/4W 5%	1301322	47
20	R2, R4, R6, R8, R10, R11, R13, R16, R18, R20, R21, R23, R25, R27, R28, R32, R33, R35, R37, R38, R40	RES. 330 1/4W 5%	1300295	46
66	C2, C3, C7, C62, C67, C74	CAP. 580 PF 100V, 5% MICA	1000026	45
7		HEAT SINK	121001	44
1	R140	RES. 68 1/4W, 5%	1300219	43
1	R139	RES. 470 1/2W, 5%	1300319	42
4	R25, R28, R39, R42	RES. 680 1/4W, 5%	130124	41
2		SPACER (CABLE CLAMP)	1302704	40
4		NICE "22AWG STRIP TER INS"	0733035	39
8	E1, E9, E14, E22, E27, E35, E39, E46	I.C. DEC 8251	1909594	38
4	E5, E20, E26, E43	I.C. DEC 6380	1909971	37
1	E25	I.C. DEC 74111	1909267	36
4	E7, E17, E31, E34	I.C. DEC 74110	1909057	35
16	E15, E16, E23, E24, E28, E29, E36, E37, E40, E41, E47, E48	PULSE TRANSFORMER	1609631	34
16	E4, E6, E7, E12, E13, E18, E19, E21, E30, E32, E33, E38, E42, E44, E45, E49	TRANSISTOR DEC4008	1510015	33
4	Q1, Q2, Q4, Q5	TRANSISTOR DEC 3762	1509649	32
2	Q3, Q6	TRANSISTOR DEC 4258	1503381	31
2	Q8, Q12	TRANSISTOR DEC 6534	1503406	30
1	Q9	TRANSISTOR DEC 1008	1502100	29
4	R7, Q10, Q11	TRANSISTOR DEC 1008	1502155	28
1	R2, R3, R5	RES. 12 1/4W, 1% MF	1300332	27
1	R67	RES. 348K 1/8W, 1% MF	1303156	26
1	R68	RES. 14.7K 1/8W, 1% MF	1302941	25
6	R26, 27, 40, 41, 43, 45	RES. 4.7K 1/4W, 5%	1300447	24
1	R27, R35	RES. 5.7K 1/4W, 5%	1300444	23
5	R28, R29, R30, R31, R31	RES. 15K, 1/4W, 5%	1300391	22
2	R31, R36	RES. 750, 1W, 5%	1302385	21
1	R32, R33, R34, R66, R67, R68, R69, R70	RES. 330 1/4W, 5%	1300295	20
1	R151	RES. 220 1/4W, 5%	1300271	19
81	R133, R134, R135, R136, R137, R138, R139, R140, R141, R142, R143, R144, R145, R146, R147, R148, R149, R150	RES. 150 1/4W, 5%	1300250	18
3	R133, R136, R152	RES. 100 1/4W, 5%	1300229	17
4	R69, R71, R150	RES. 10, 1/2W, 5%	1300168	16
9	D1-D3, D6-D10, D17, D21	DIODE D672	1105275	15
76	D4-D7, D11-D16, D17, D18, D20, D22-D26	DIODE D664	1100114	14
1	C5	CAP 20UF 50V 10% ELEC	1002839	13
22	C64-C66, C73, C80, C82-C94	CAP. 01UF, 100V, 20% DISC	1001610	12
3	C6, C81, C97	CAP. 5UF, 10V, 10% TANI	1000076	11
3	C67, C98, C99	CAP. 047UF, 16V, 20% DISC	10009678	10
1	C68	CAP. 500PF, 50V, 10% DISC	1000025	9
1	C69, C70, C71, C72, C74	CAP. 20PF, 100V, 10% DISC	1000312	8
2	C1, C4	CAP. 39PF, 100V, 5% D.M.	1000010	7
2		EYELET - GS4711 STIMPSON	1006730	6
2		HANDLE FLIP CHIP GREEN	1003370	5
2		ETCHED CIRCUIT BOARD	1005832	4
2		MODULE HISTORY LIST	1006227	3
2		ASSEMBLY DRILLING HOLE LAYOUT	1006227	2
2		KIT COORDINATE	1006227	1

REF DESIGNATION **DESCRIPTION** **PART NO.** **ITEM NO.**

REV	COLUMN	DATE	DESCRIPTION
DEC 3762	+		
DEC 4258	211223		
DEC 6534	1105275		
DEC 1008	EN 3046		
DEC 1008	NOMIE		
DEC D672	1113653		
DEC D664	1113606		

EQUIPMENT CORPORATION

NY DRIVER CURRENT SOURCE

SEMICONDUCTOR CONVERSION CHART

SCALE: 1/4" = 1" SHEET: 2 OF 2

JUMPER LIST

ITEM NO.	ANG.	FROM PT.	TO PT.
39	22	J4-A	J4-B
39	22	J3-A	J3-B
39	22	J2-A	J2-B
39	22	J1-A	J1-B

K PIN LOCATIONS

K TYPE	GND	+5V
DEC6380	1	8
DEC8251	8	16

GND AND 5V ARE USUALLY PIN 7 AND 16 RESPECTIVELY. EXCEPTIONS ARE STATED ABOVE.

