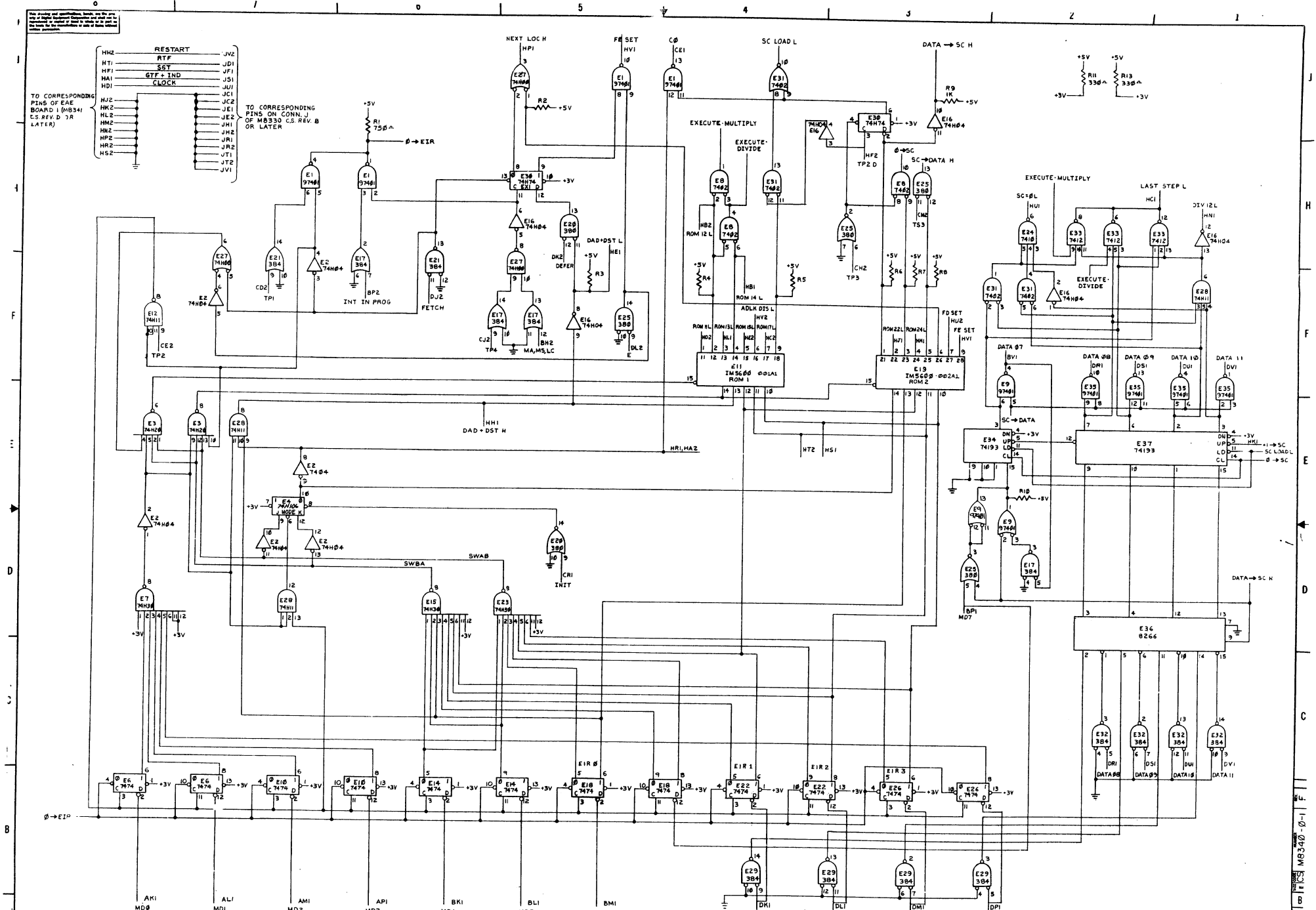


**KE8-E extended
arithmetic element
engineering drawings**

DIGITAL EQUIPMENT CORPORATION MAYNARD, MASSACHUSETTS			LEGEND		QUANTITY / VARIATION											
ACCESSORY LIST			D DOCUMENT DN DOCUMENT CHANGE NOTICE PA PAPER TAPE ASCII PB PAPER TAPE BINARY PM PAPER TAPE READ-IN-MODE													
MADE BY J. McCluskey DATE 4/19/72		CHECKED <i>J. McCluskey</i> DATE 2/9/72	SECTION													
ENG L. Klotz DATE 4/19/72		PROD <i>L. Klotz</i> DATE 4/19/72	ISSUED SECT.													
ITEM NO.	DWG NO. / PART NO.	DESCRIPTION			KE8-E						KIT CHECK	BY	DATE	INSTALLATION CHECK	BY	DATE
1	M8340	EAE Decoder and Stepcounter module			1											
2	M8341	EAE Multiplexer and Timing Generator Module			1											
3	H851	Edge Connectors			3											
4	LIBKIT-8E-KE8-E	Program Library Kit For KE8-E			1											
5	KE8-E	KE8-E Maintenance Manual			1											
		Note: It item 5 is temporarily waived ship the following.														
	A-SP-KE8-E-3	KE8-E Engineering Specifications			1											
	A-SP-KE8-E-4	KE8-E Acceptance Procedure			1											
TITLE			ASSY. NO.		SIZE CODE		NUMBER		REV.		ECO NO					
Accessory List. <input checked="" type="checkbox"/>					A AL		KE8-E-6									
SHEET OF			DIST.													



RESTART
 RTF J21
 SET J22
 GTF + IND J23
 CLOCK J24
 J25
 J26
 J27
 J28
 J29
 J30
 J31
 J32
 J33
 J34
 J35
 J36
 J37
 J38
 J39
 J40

TO CORRESPONDING PINS OF EAE BOARD I (MS34 ES REV. D 3/7 LATER)

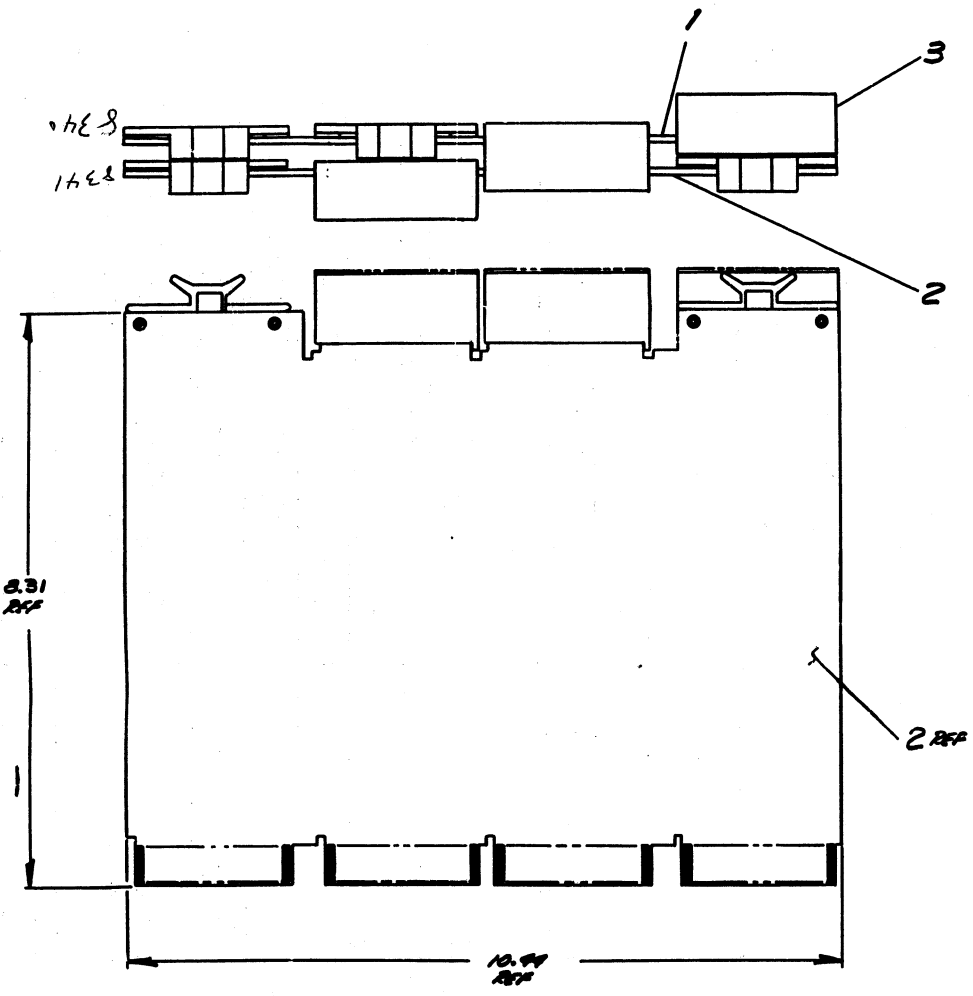
TO CORRESPONDING PINS ON CONN. J OF MS330 C.S. REV. B OR LATER

REV.	
DATE	
BY	
CHECKED	
APPROVED	
DATE	
BY	
CHECKED	
APPROVED	
DATE	
BY	

QTY.	DESCRIPTION	PARTS LIST	PART NO.	REV. NO.
	UNLESS OTHERWISE SPECIFIED, ALL PARTS SHALL BE AS SHOWN IN THIS DRAWING.			
	TOLERANCES UNLESS OTHERWISE SPECIFIED:			
	FRACTIONS .010 .020 .030 .040 .050 .060 .070 .080 .090 .100 .125 .150 .175 .200 .250 .300 .375 .450 .500 .625 .750 .875 .900 .950 .990 .995			
	DECIMALS .010 .020 .030 .040 .050 .060 .070 .080 .090 .100 .125 .150 .175 .200 .250 .300 .375 .450 .500 .625 .750 .875 .900 .950 .990 .995			
	PERCENTS 1% 2% 3% 4% 5% 6% 7% 8% 9% 10% 11% 12% 13% 14% 15% 16% 17% 18% 19% 20% 21% 22% 23% 24% 25% 26% 27% 28% 29% 30% 31% 32% 33% 34% 35% 36% 37% 38% 39% 40% 41% 42% 43% 44% 45% 46% 47% 48% 49% 50% 51% 52% 53% 54% 55% 56% 57% 58% 59% 60% 61% 62% 63% 64% 65% 66% 67% 68% 69% 70% 71% 72% 73% 74% 75% 76% 77% 78% 79% 80% 81% 82% 83% 84% 85% 86% 87% 88% 89% 90% 91% 92% 93% 94% 95% 96% 97% 98% 99%			
	MATERIALS			
	FINISH			
	SCALE			
	SHEET			
	OF			
	DATE			
	DIST.			
	DATE			
	BY			
	CHECKED			
	APPROVED			
	DATE			
	BY			
	CHECKED			
	APPROVED			
	DATE			
	BY			
	CHECKED			
	APPROVED			
	DATE			
	BY			
	CHECKED			
	APPROVED			
	DATE			
	BY			
	CHECKED			
	APPROVED			
	DATE			
	BY			
	CHECKED			
	APPROVED			
	DATE			
	BY			
	CHECKED			
	APPROVED			
	DATE			
	BY			
	CHECKED			
	APPROVED			
	DATE			
	BY			
	CHECKED			
	APPROVED			
	DATE			
	BY			
	CHECKED			
	APPROVED			
	DATE			
	BY			
	CHECKED			
	APPROVED			
	DATE			
	BY			
	CHECKED			
	APPROVED			
	DATE			
	BY			
	CHECKED			
	APPROVED			
	DATE			
	BY			
	CHECKED			
	APPROVED			
	DATE			
	BY			
	CHECKED			
	APPROVED			
	DATE			
	BY			
	CHECKED			
	APPROVED			
	DATE			
	BY			
	CHECKED			
	APPROVED			
	DATE			
	BY			
	CHECKED			
	APPROVED			
	DATE			
	BY			
	CHECKED			
	APPROVED			
	DATE			
	BY			
	CHECKED			
	APPROVED			
	DATE			
	BY			
	CHECKED			
	APPROVED			
	DATE			
	BY			
	CHECKED			
	APPROVED			
	DATE			
	BY			
	CHECKED			
	APPROVED			
	DATE			
	BY			
	CHECKED			
	APPROVED			
	DATE			
	BY			
	CHECKED			
	APPROVED			
	DATE			
	BY			
	CHECKED			
	APPROVED			
	DATE			
	BY			
	CHECKED			
	APPROVED			
	DATE			
	BY			
	CHECKED			
	APPROVED			
	DATE			
	BY			
	CHECKED			
	APPROVED			
	DATE			
	BY			
	CHECKED			
	APPROVED			
	DATE			
	BY			
	CHECKED			
	APPROVED			
	DATE			
	BY			
	CHECKED			
	APPROVED			
	DATE			
	BY			
	CHECKED			
	APPROVED			
	DATE			
	BY			
	CHECKED			
	APPROVED			
	DATE			
	BY			
	CHECKED			
	APPROVED			
	DATE			
	BY			
	CHECKED			
	APPROVED			
	DATE			
	BY			
	CHECKED			
	APPROVED			
	DATE			
	BY			
	CHECKED			
	APPROVED			
	DATE			
	BY			
	CHECKED			
	APPROVED			
	DATE			
	BY			
	CHECKED			
	APPROVED			
	DATE			
	BY			
	CHECKED			
	APPROVED			
	DATE			
	BY			
	CHECKED			
	APPROVED			
	DATE			
	BY			
	CHECKED			
	APPROVED			
	DATE			
	BY			
	CHECKED			
	APPROVED			
	DATE			
	BY			
	CHECKED			
	APPROVED			
	DATE			
	BY			
	CHECKED			
	APPROVED			
	DATE			
	BY			
	CHECKED			
	APPROVED			
	DATE			
	BY			
	CHECKED			
	APPROVED			
	DATE			
	BY			
	CHECKED			
	APPROVED			
	DATE			
	BY			
	CHECKED			
	APPROVED			
	DATE			
	BY			
	CHECKED			
	APPROVED			
	DATE			
	BY			
	CHECKED			
	APPROVED			
	DATE			
	BY			
	CHECKED			
	APPROVED			
	DATE			
	BY			
	CHECKED			
	APPROVED			
	DATE			
	BY			
	CHECKED			
	APPROVED			
	DATE			
	BY			
	CHECKED			
	APPROVED			
	DATE			
	BY			
	CHECKED			
	APPROVED			
	DATE			
	BY			
	CHECKED			
	APPROVED			
	DATE			
	BY			
	CHECKED			
	APPROVED			
	DATE			
	BY			
	CHECKED			
	APPROVED			
	DATE			
	BY			
	CHECKED			
	APPROVED			
	DATE			
	BY			
	CHECKED			
	APPROVED			
	DATE			
	BY			
	CHECKED			
	APPROVED			
	DATE			
	BY			
	CHECKED			
	APPROVED			
	DATE			
	BY			
	CHECKED			
	APPROVED			
	DATE			
	BY			
	CHECKED			
	APPROVED			
	DATE			
	BY			
	CHECKED			
	APPROVED			
	DATE			
	BY			
	CHECKED			
	APPROVED			
	DATE			
	BY			
	CHECKED			
	APPROVED			
	DATE			
	BY			
	CHECKED			
	APPROVED			
	DATE			
	BY			
	CHECKED			
	APPROVED			
	DATE			
	BY			
	CHECKED			
	APPROVED			
	DATE			
	BY			
	CHECKED			
	APPROVED			
	DATE			
	BY			
	CHECKED			
	APPROVED			
	DATE			
	BY			
	CHECKED			
	APPROVED			
	DATE			
	BY			
	CHECKED			

This drawing and specifications, herein, are the property of Digital Equipment Corporation and shall not be reproduced or copied in whole or in part as the basis for the manufacture or sale of items without written permission.

D
C
B
A



REV
DUA KE8-E-Ø

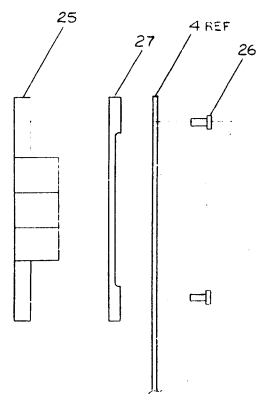
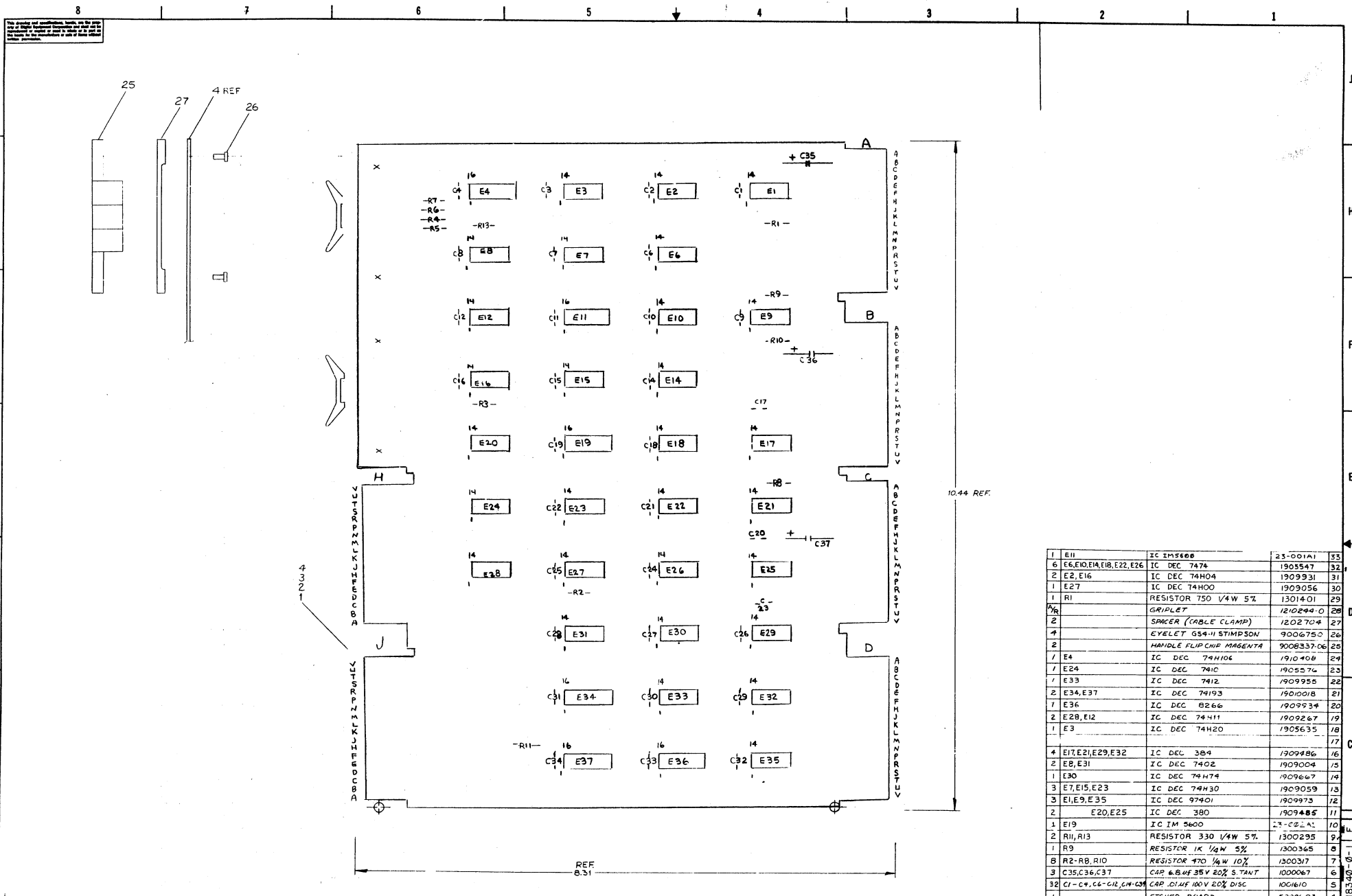
B

A

REV.	
CHG.	
NO.	

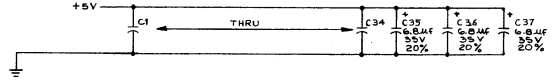
DEC FORM NO DRD 100-A

FIRST USED ON OPTION/MODEL	QTY.	DESCRIPTION	PART NO.	ITEM NO.
PDP8-E				
PARTS LIST				
UNLESS OTHERWISE SPECIFIED DIMENSION IN INCHES. TOLERANCES	DRY <i>Richard</i>	DATE 2/21/71	digital EQUIPMENT CORPORATION MAYNARD, MASSACHUSETTS	
DECIMALS	CHK'D. <i>Richard</i>	DATE 1/18/71		
ANGLES	ENG. <i>Richard</i>	DATE 8/18/71	TITLE EXTENDED ARITH ELEMENT	
.XXX - .005 .XX - .02 .X - .1	PROJ. ENG. <i>S. Smith</i>	DATE 8/18/71		
REMOVE BURRS AND BREAK SHARP CORNERS SURFACE QUALITY ✓	PROP. <i>R. Williams</i>	DATE 8/18/71	SIZE CODE DUA KE8-E-Ø	
MATERIAL	NEXT HIGHER ASSY.			
FINISH	SCALE SHEET 1 OF 1		NUMBER DUA KE8-E-Ø	



4
N
Z
N

BC1, CC1, DC1,
AC2, BC2, CC2, DC2,
AF1, BF1, CF1, DF1,
AF2, BF2, CF2, DF2,
AN1, BN1, CN1, DN1,
AN2, BN2, CN2, DN2,
AT1, BT1, CT1, DT1,
AT2, BT2, CT2, DT2,



QTY	REF DESIGNATION	DESCRIPTION	PART NO.	REV
1	E11	IC IM5600	23-001A1	33
6	E6, E10, E1A, E1B, E22, E26	IC DEC 7474	1905547	32
2	E2, E16	IC DEC 74H04	1909931	31
1	E27	IC DEC 74H00	1903056	30
1	R1	RESISTOR 750 1/4W 5%	1301401	29
2		GRIPLET	1210244-0	28
2		SPACER (CABLE CLAMP)	1202704	27
4		EYELET GS4-11 STIMPSON	9006750	26
2		HANDLE FLIP CNF MAGENTA	9006337-06	25
1	E4	IC DEC 74H106	1910408	24
1	E24	IC DEC 7410	1905576	23
1	E33	IC DEC 7412	1909955	22
2	E34, E37	IC DEC 74193	19010018	21
1	E36	IC DEC 8266	1909934	20
2	E28, E12	IC DEC 74411	1909267	19
1	E3	IC DEC 74H20	1905635	18
				17
4	E17, E21, E29, E32	IC DEC 384	1909486	16
2	E8, E31	IC DEC 7402	1909004	15
1	E30	IC DEC 74H74	1909667	14
3	E7, E15, E23	IC DEC 74H30	1903059	13
3	E1, E9, E35	IC DEC 97401	1909973	12
2	E20, E25	IC DEC 380	1909485	11
1	E19	IC IM 5600	23-C02A1	10
2	R11, R13	RESISTOR 330 1/4W 5%	1300295	9
1	R9	RESISTOR 1K 1/4W 5%	1300365	8
8	R2-R8, R10	RESISTOR 470 1/4W 10%	1300317	7
3	C35, C36, C37	CAP 6.8UF 35V 20% S TANT	1000067	6
32	C1-C4, C6-C12, C14-C18	CAP .01UF 100V 20% DISC	1001610	5
1		ETCHED BOARD	5009603	4
REF		MODULE ECO HISTORY	B-MH-MB340-04	3
REF		ASSY/DRILLING - HOLE LAYOUT	DAH-MB340-05	2
REF		X-Y COORDINATE HOLE LOCATION	KCC-MB340-04	1

IC TYPE	QTY	GRID	REF
DEC 74193	8	16	
DEC 8271	8	16	
DEC 384	1	8	
DEC 380	1	8	
DEC 7476	5	13	

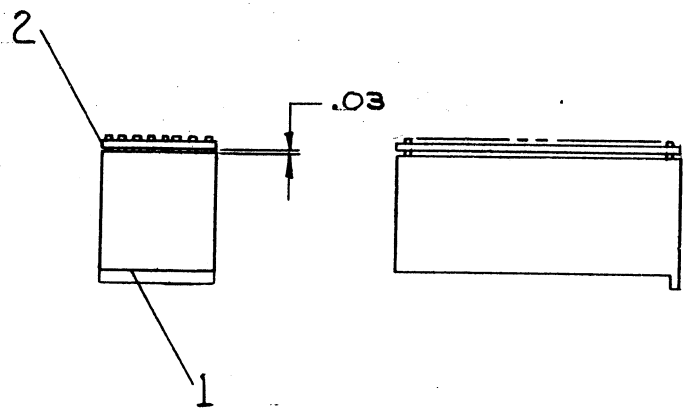
DATE: 11/11/77
 DRAWN BY: [Signature]
 CHECKED BY: [Signature]
 TITLE: EAE DECODER & STEP COUNTER
 PROJECT: [Blank]
 SHEET: 1 OF 2

DEC NO.	EIA NO.	DEC NO.	EIA NO.

SEMICONDUCTOR CONVERSION CHART

This drawing and specifications, herein, are the property of Digital Equipment Corporation and shall not be reproduced or copied or used in whole or in part as the basis for the manufacture or sale of items without written permission.

REV. B SIZE CODE NUMBER 0-0-198H40 2 1



REF	MODULE ECO HISTORY	B-MH-H851-0-6	5
REF	ASSY HOLE LAYOUT	C-AH-H851-0-5	4
REF	CIRCUIT SCHEMATIC	B-CS-H851-0-1	3
1	ETCH BOARD	D-IA-5008903-0-0	2
1	CONN BLOCK, 72 PIN	I210152	1

FIRST USED ON OPTION/MODEL	H851	
QTY.	DESCRIPTION	PART NO.
		ITEM NO.

PARTS LIST
digital EQUIPMENT CORPORATION
 MAYNARD, MASSACHUSETTS

TOLERANCES DECIMALS

.XXX	= ± .005
.XX	= ± .02
.X	= ± .1

UNLESS OTHERWISE SPECIFIED
 DIMENSION IN INCHES
TOLERANCES
 ANGLES ± 0°30'
 FINAL SURFACE QUALITY
 REMOVE BURRS AND BREAK SHARP CORNERS

MATERIAL ——— // ———
 FINISH ——— // ———

DRN.	<i>A. Flandin</i>	DATE	7/28/70
CHK'D.	<i>P. Davis</i>	DATE	8/13/70
ENG.	<i>Jack Prime</i>	DATE	8-13-70
PROJ. ENG.	<i>Jack Prime</i>	DATE	8-13-70
PROD.	<i>W. Miller</i>	DATE	8-13-70

TITLE
 H851
 EDGE CONNECTOR

SIZE CODE	NUMBER	REV.
B UA	H851-0-0	B

REVISIONS	CHANGE NO.	REV.
	H851-00001	A
<i>12-10-70</i>		
P. GARDNER		
<i>12-14-70</i>		
H851-00002 B		
<i>8-3-72</i>		
P. GARDNER		
<i>Jack Prime For P.6 8-9-72</i>		

NOTES:
 1. IF ANY CHANGES ARE TO BE MADE TO THIS PRINT
 FIRST CHECK WITH PURCHASE SPEC'S A-PS-23-001A
 AND A-SP-23-002A1.

FDK E8-E-02

ROM 1
 ENABLE IF MAJOR STATE = F OR E
 EIR 3 → A
 EIR 2 → B
 EIR 1 → C
 EIR 0 - NEW → D
 EXECUTE → E

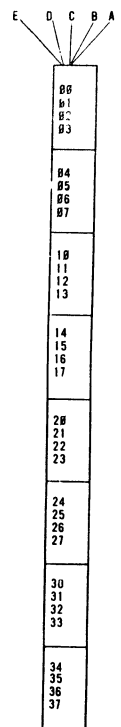
ROM 2
 ENABLE IF MAJOR STATE = F
 EIR 3 → A
 EIR 2 → B
 EIR 1 → C
 EIR 0 → D
 OLD → E

FUNCTION	Y1	Y2	Y3	Y4	Y5	Y6	Y7	Y8	OCTAL
F - NOP	1	1	1	1	1	1	1	1	377
F - ACS + SCL	1	1	1	1	1	1	1	1	377
F - MUY	1	1	1	1	0	0	1	1	371
F - DVI	1	1	1	1	1	1	1	1	377
F - NWI	0	1	1	0	0	0	1	1	143
F - SHL	0	1	1	1	1	1	1	1	377
F - ASR	0	1	1	1	1	0	1	1	171
F - LSR	1	1	1	1	1	0	0	1	371
F - SCA	1	1	1	1	1	1	1	1	377
F - DAD	1	1	1	1	1	0	1	1	371
F - DST	1	1	1	1	1	1	1	1	377
NOP	1	1	1	1	1	1	1	1	377
F - DPSZ	1	1	1	1	1	1	1	1	377
F - DPIC	1	0	0	1	1	0	0	1	231
F - DCM	1	0	0	1	1	0	0	1	231
F - SAM	1	1	0	1	1	0	0	1	331
E - NOP	1	1	1	1	1	1	1	1	377
E - SCL	1	1	1	1	1	1	0	1	376
E - MUY	1	0	1	1	0	1	1	1	267
E - DVI	1	0	1	0	0	0	0	1	241
NOT USED									X
E - SHL	0	1	1	0	0	0	1	0	142
E - ASR	1	1	1	1	0	1	1	0	366
E - LSR	1	1	1	1	1	1	0	0	366
NOT USED									X
E - DAD	1	1	0	1	1	0	1	1	331
E - DST	1	1	1	1	1	1	1	1	377
NOT USED									X
NOT USED									X
NOT USED									X
NOT USED									X

FUNCTION	Y1	Y2	Y3	Y4	Y5	Y6	Y7	Y8	OCTAL
NOP	1	1	1	1	1	1	1	1	377
ACS	1	1	1	1	1	1	1	1	177
NEW MUY	1	1	0	1	1	0	0	1	331
NEW DVI	1	1	0	1	1	0	0	1	331
NMI	1	1	0	1	1	1	1	1	337
SHL	1	1	1	1	1	0	1	1	372
ASR	1	1	1	1	1	0	1	0	372
LSR	1	1	1	1	1	0	1	0	372
SCA	1	1	1	1	0	1	1	1	367
DAD	1	1	1	1	1	0	0	1	371
DST	1	1	1	1	1	0	0	1	371
NOP	1	1	1	1	1	1	1	1	377
DPSZ	1	1	1	0	1	1	1	1	357
DPIC	1	0	1	1	1	1	1	1	277
DCM	1	0	1	1	1	1	1	1	277
SAM	1	0	1	1	1	1	1	1	277
NOP	1	1	1	1	1	1	1	1	377
SCL	1	1	1	1	1	1	0	1	372
OLD MUY	1	1	0	1	1	0	1	1	332
OLD DVI	1	1	0	1	1	0	1	0	332
NMI	1	1	0	1	1	1	1	1	337
SHL	1	1	1	1	1	0	1	0	372
ASR	1	1	1	1	1	0	1	0	372
LSR	1	1	1	1	1	0	1	0	372
SCA	1	1	1	1	0	1	1	1	367
SCA-SCL	1	1	1	1	0	0	1	0	362
SCA-OLD MUY	1	1	0	1	0	0	1	0	322
SCA-OLD DVI	1	1	0	1	0	0	1	0	322
SCA - NMI	1	1	0	1	1	1	1	1	327
SCA - SHL	1	1	1	1	0	1	1	0	362
SCA - ASR	1	1	1	1	0	1	1	0	362
SCA - LSR	1	1	1	1	0	1	1	0	362

B INDICATES ACB → LINK DATA AT TP3
 B INDICATES TO SLOW → ADD (NOT MERELY SHIFT)
 B INDICATES CARRY COUPLE AT TP3 (← CARRY IN, → CARRY OUT → DATA)
 B INDICATES LEFT SHIFT
 B INDICATES A SHIFT OPERATION
 B DISABLES CPU ADDER LINK GATING
 B INDICATES LINK LOAD AT TP3
 B INDICATES LOAD SC AT TP2

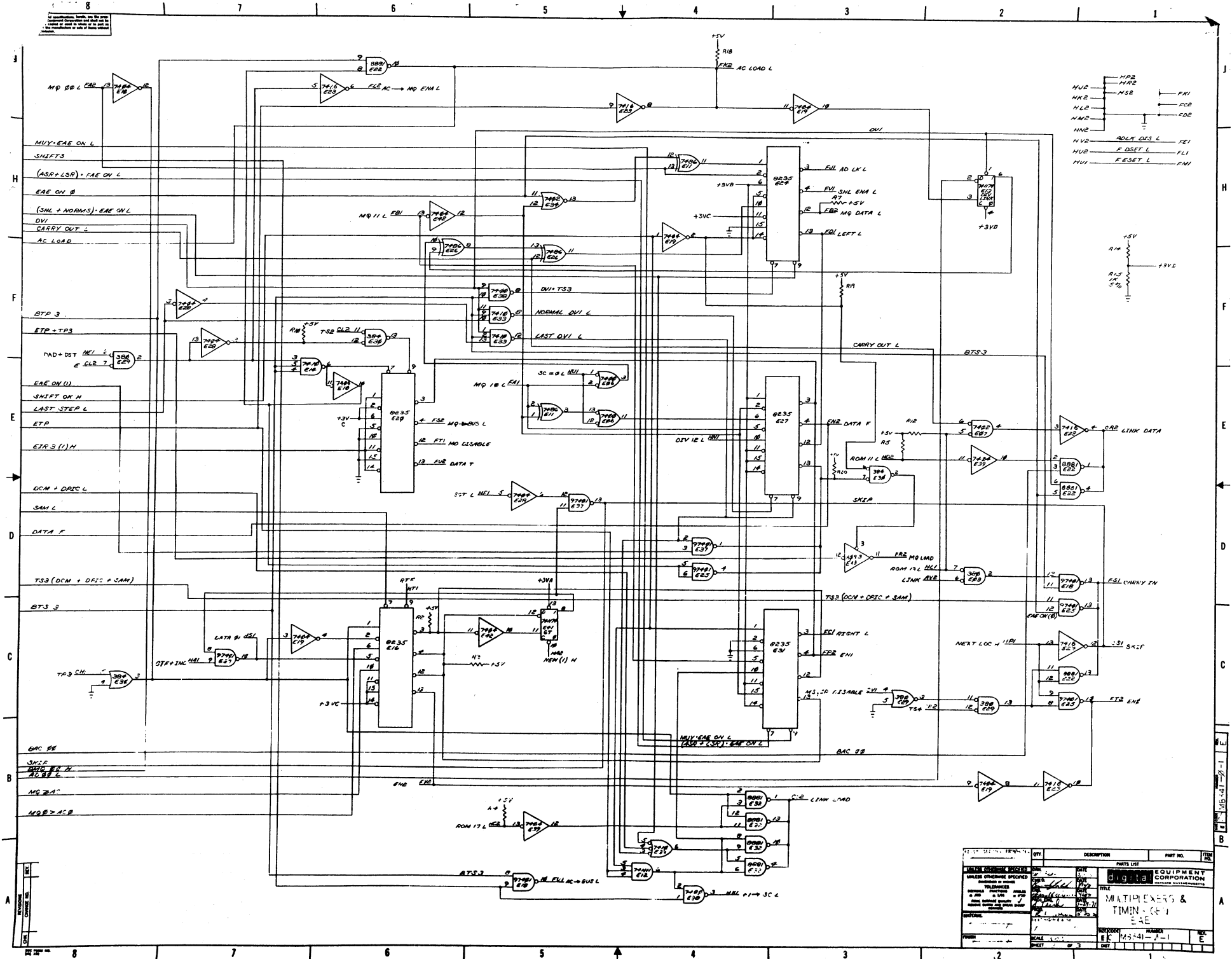
B INDICATES ACS
 B INDICATES DCM+SAM+DPIC
 B INDICATES B → SC AT F - TP3
 B INDICATES DPSZ
 B INDICATES SCA
 B INDICATES MA → I → MA, I → SKIP
 B INDICATES DSET
 B INDICATES ESET



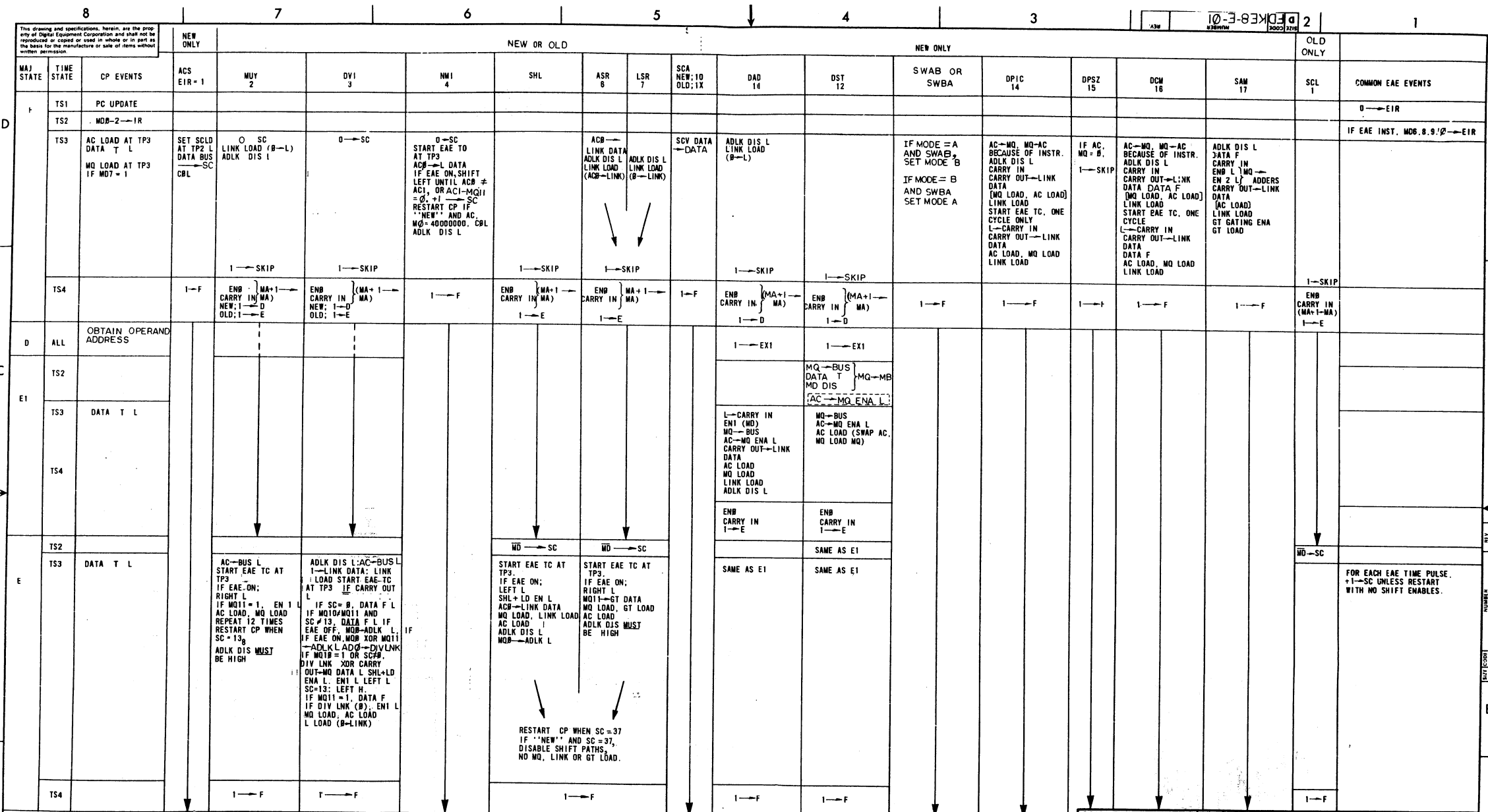
CHK	REVISIONS	CHANGE NO	REV
		KE8E-00003	A
		ESSER	

FIRST USED ON OPTION/MODEL	QTY.	DESCRIPTION	PART NO.	ITEM NO.
KE8-E				
PARTS LIST				
UNLESS OTHERWISE SPECIFIED DIMENSION IN INCHES TOLERANCES	DRN: <i>John Capron</i>	DATE: <i>2/26/71</i>	digital EQUIPMENT CORPORATION WATFORD MASSACHUSETTS	
DECIMALS	ANGLES	CHK'D: <i>W. Max</i>	DATE: <i>2/27/71</i>	TITLE: ROM ENCODING
xxx - 005	±0°30'	ENG: <i>John Capron</i>	DATE: <i>2/27/71</i>	
x - .1		PROJ. ENG: <i>John Capron</i>	DATE: <i>2/27/71</i>	
REMOVE BURRS AND BREAK SHARP CORNERS SURFACE QUALITY	PROD: <i>W. Max</i>	DATE: <i>2/27/71</i>		
MATERIAL	NEXT HIGHER ASSY.	SIZE CODE	NUMBER	REV
		A-ML-KE8-E	D F D KE 3-E-02	A
FINISH	SCALE NONE	SHEET	DIST	
		1 OF 1		

Information furnished by this drawing is the property of the manufacturer and shall not be used in whole or in part without the written consent of the manufacturer of this drawing.



QTY	DESCRIPTION	PART NO.	ITEM NO.
1	7410 NAND	7410	1
1	7411 NAND	7411	2
1	7412 NAND	7412	3
1	7413 NAND	7413	4
1	7414 INVERTER	7414	5
1	7415 NAND	7415	6
1	7416 NAND	7416	7
1	7417 NAND	7417	8
1	7418 NAND	7418	9
1	7419 NAND	7419	10
1	7420 NAND	7420	11
1	7421 NAND	7421	12
1	7422 NAND	7422	13
1	7423 NAND	7423	14
1	7424 NAND	7424	15
1	7425 NAND	7425	16
1	7426 NAND	7426	17
1	7427 NAND	7427	18
1	7428 NAND	7428	19
1	7429 NAND	7429	20
1	7430 NAND	7430	21
1	7431 NAND	7431	22
1	7432 NAND	7432	23
1	7433 NAND	7433	24
1	7434 NAND	7434	25
1	7435 NAND	7435	26
1	7436 NAND	7436	27
1	7437 NAND	7437	28
1	7438 NAND	7438	29
1	7439 NAND	7439	30
1	7440 NAND	7440	31
1	7441 NAND	7441	32
1	7442 NAND	7442	33
1	7443 NAND	7443	34
1	7444 NAND	7444	35
1	7445 NAND	7445	36
1	7446 NAND	7446	37
1	7447 NAND	7447	38
1	7448 NAND	7448	39
1	7449 NAND	7449	40
1	7450 NAND	7450	41
1	7451 NAND	7451	42
1	7452 NAND	7452	43
1	7453 NAND	7453	44
1	7454 NAND	7454	45
1	7455 NAND	7455	46
1	7456 NAND	7456	47
1	7457 NAND	7457	48
1	7458 NAND	7458	49
1	7459 NAND	7459	50
1	7460 NAND	7460	51
1	7461 NAND	7461	52
1	7462 NAND	7462	53
1	7463 NAND	7463	54
1	7464 NAND	7464	55
1	7465 NAND	7465	56
1	7466 NAND	7466	57
1	7467 NAND	7467	58
1	7468 NAND	7468	59
1	7469 NAND	7469	60
1	7470 NAND	7470	61
1	7471 NAND	7471	62
1	7472 NAND	7472	63
1	7473 NAND	7473	64
1	7474 NAND	7474	65
1	7475 NAND	7475	66
1	7476 NAND	7476	67
1	7477 NAND	7477	68
1	7478 NAND	7478	69
1	7479 NAND	7479	70
1	7480 NAND	7480	71
1	7481 NAND	7481	72
1	7482 NAND	7482	73
1	7483 NAND	7483	74
1	7484 NAND	7484	75
1	7485 NAND	7485	76
1	7486 NAND	7486	77
1	7487 NAND	7487	78
1	7488 NAND	7488	79
1	7489 NAND	7489	80
1	7490 NAND	7490	81
1	7491 NAND	7491	82
1	7492 NAND	7492	83
1	7493 NAND	7493	84
1	7494 NAND	7494	85
1	7495 NAND	7495	86
1	7496 NAND	7496	87
1	7497 NAND	7497	88
1	7498 NAND	7498	89
1	7499 NAND	7499	90
1	7500 NAND	7500	91



REV	CHG	NO	DATE	BY	DESCRIPTION

FIRST USED ON OPTION/MODEL		QTY.	DESCRIPTION	PART NO.	ITEM NO.												
KE8-E																	
UNLESS OTHERWISE SPECIFIED DIMENSION IN INCHES TOLERANCES																	
DECIMALS	ANGLES	DRN. <i>Tom Capen</i> DATE <i>22 Jun 77</i> CHK'D. <i>W. MA</i> DATE <i>8/17/77</i> ENG. <i>W. MA</i> DATE <i>8/17/77</i> PROLENG. <i>S. Nish</i> DATE <i>8/17/77</i> REMOVE BURRS AND BREAK SHARP CORNERS SURFACE QUALITY <input checked="" type="checkbox"/>															
PARTS LIST																	
<table border="1"> <tr> <th>MATERIAL</th> <th>NEXT HIGHER ASSY.</th> <th>SIZE</th> <th>CODE</th> <th>NUMBER</th> <th>REV.</th> </tr> <tr> <td> </td> <td> </td> <td>A-ML-KE8-E</td> <td> </td> <td> </td> <td> </td> </tr> </table>						MATERIAL	NEXT HIGHER ASSY.	SIZE	CODE	NUMBER	REV.			A-ML-KE8-E			
MATERIAL	NEXT HIGHER ASSY.	SIZE	CODE	NUMBER	REV.												
		A-ML-KE8-E															
TITLE: EAE FLOW DIAGRAM SHEET: 1 OF 1 DIST.																	

DIGITAL EQUIPMENT CORPORATION
MAYNARD, MASSACHUSETTS

ENGINEERING SPECIFICATION

CONTINUATION SHEET

ENGINEERING SPECIFICATION

DATE 2/15/72

TITLE KE8E ACCEPTANCE PROCEDURE

REVISIONS

REV	DESCRIPTION	CHG NO	ORIG	DATE	APPD BY	DATE

TITLE KE8E ACCEPTANCE PROCEDURE

- 1.Ø Equipment Required
 - A. PDP-8E or PDP-8M
 - B. M8340
 - C. M8341
 - D. 3-H851's
 - E. Teletype
 - F. Maindec-8E-DØLB-D-PB KE8E Instruction Test 1
 - G. Maindec-8E-DØMB-D-PB KE8E Instruction Test 2
 - H. Maindec-8E-DØRA-D-PB KE8E Extended Memory Exerciser

- 2.Ø Check that the M8340 and M8341 have:
 - A. Proper circuit revision.
 - B. Day code.

- 3.Ø Load and run the following diagnostics, consulting the Diagnostic Document for proper operating procedure.
 - A. Maindec-8E-DØLB for two complete program passes which will be indicated by "KE81" being typed out twice.
 - B. Maindec-8E-DØMB for two complete program passes which will be indicated by "KE8E" being typed out twice.
 - C. Maindec-8E-DØRA for five complete program passes which will be indicated by "KE8EME" being typed out five times. At the beginning of the program, be sure to type the correct value defining the maximum amount of memory.

- 4.Ø Shipping Hardware
 - A. M8340
 - B. M8341
 - C. 3-H8351's

- 5.Ø Shipping Software
 - A. Libkit-8E-KE8E
 - B. KE8E Print Set
 - C. KE8E Maintenance Manual

This drawing and specifications, herein, are the property of Digital Equipment Corporation and shall not be reproduced or copied or used in whole or in part as the basis for the manufacture or sale of items without written permission.

ENG <i>Louis H. G.</i>	APPD <i>John M. Conway</i>	SIZE A	CODE SP	NUMBER KE8-E-0-4	REV
------------------------	----------------------------	---------------	---------	------------------	-----

SIZE A	CODE SP	NUMBER KE8-E-0-4	REV
---------------	---------	------------------	-----

DIGITAL EQUIPMENT CORPORATION WORLD-WIDE SALES AND SERVICE

146 Main Street, Maynard, Massachusetts, U.S.A. 01754
Telephone: From Metropolitan Boston: 646-8600 • Elsewhere: (617)-897-5111
TWX: 710-347-0212 Cable: DIGITAL MAYN Telex: 94-8457

UNITED STATES

NORTHEAST

REGIONAL OFFICE

275 Wyman Street, Waltham, Massachusetts 02154
Telephone: (617)-890-0320/0330 TWX: 710-324-6919
WALTHAM

15 Lunda Street, Waltham, Massachusetts 02154
Telephone: (617)-891-1030 TWX: 710-324-6919
CAMBRIDGE/BOSTON

899 Main Street, Cambridge, Massachusetts 02139
Telephone: (617)-491-6130 TWX: 710-320-1167
ROCHESTER

130 Aliens Creek Road, Rochester, New York 14618
Telephone: (716)-461-1700 TWX: 710-253-3078
CONNECTICUT

240 Pomeroy Ave., Meriden, Conn 06450
Telephone: (203)-237-8441/7466 TWX: 710-461-0054

MID-ATLANTIC — SOUTHEAST

REGIONAL OFFICE:

U.S. Route 1, Princeton, New Jersey 08540
Telephone: (609)-452-2940 TWX: 510-685-2338
NEW YORK

95 Cedar Lane, Englewood, New Jersey 07631
Telephone: (201)-871-4984, (212)-594-6955, (212)-736-0447
TWX: 710-991-9721

NEW JERSEY
1259 Route 46, Parsippany, New Jersey 07054
Telephone: (201)-335-3300 TWX: 710-987-8319

PRINCETON

U.S. Route 1
Princeton, New Jersey 08540
Telephone: (609) 452-2940 TWX: 510-685-2338

LONG ISLAND

1 Huntington Quadrangle
Suite 1507 Huntington Station, New York 11746
Telephone: (516)-694-4131, (212)-895-8095

PHILADELPHIA

Station Square Three, Paoli, Pennsylvania 19301
Telephone: (215)-647-4900/4410 Telex: 510-668-8395

WASHINGTON

Executive Building
6811 Kenilworth Ave., Riverdale, Maryland 20840
Telephone: (301)-779-1600/752-8797 TWX: 710-826-9662

DURHAM/CHAPEL HILL

2704 Chapel Hill Boulevard
Durham, North Carolina 27707
Telephone: (919)-489-3347 TWX: 510-927-0912

ORLANDO

Suite 130, 7001 Lake Ellenor Drive, Orlando, Florida 32809
Telephone: (305)-851-4450 TWX: 810-850-0180

ATLANTA

2815 Clearview Place, Suite 100,
Atlanta, Georgia 30340
Telephone: (404)-451-3734/3735/3736 TWX: 810-757-4223

INTERNATIONAL

EUROPEAN HEADQUARTERS

Digital Equipment Corporation International Europe
81 Route de l'Aire
1211 Geneva 26, Switzerland
Telephone: 42 79 50 Telex: 22 683

MID-ATLANTIC — SOUTHEAST (cont.)

KNOXVILLE

6311 Kingston Pike, Suite 21E
Knoxville, Tennessee 37919
Telephone: (615)-588-6571 TWX: 810-583-0123

CENTRAL

REGIONAL OFFICE:

1850 Frontage Road, Northbrook, Illinois 60062
Telephone: (312)-498-2500 TWX: 910-686-0655

PITTSBURGH

400 Penn Center Boulevard
Pittsburgh, Pennsylvania 15235
Telephone: (412)-243-9404, TWX: 710-797-3657

CHICAGO

1850 Frontage Road, Northbrook, Illinois 60062
Telephone: (312)-498-2500 TWX: 910-686-0655

ANN ARBOR

230 Huron View Boulevard, Ann Arbor, Michigan 48103
Telephone: (313)-761-1150 TWX: 810-223-6053

INDIANAPOLIS

21 Beachway Drive — Suite G
Indianapolis, Indiana 46224
Telephone: (317)-243-8341 TWX: 810-341-3436

MINNEAPOLIS

Suite 111, 8030 Cedar Avenue South,
Minneapolis, Minnesota 55420
Telephone: (612)-854-6562-3-4-5 TWX: 510-676-2818

CLEVELAND

Park Hill Bldg., 35104 Euclid Ave.
Willoughby, Ohio 44094
Telephone: (216)-946-8484 TWX: 810-427-2608

ST. LOUIS

Suite 110, 115 Progress Pky., Maryland Heights,
Missouri 63043
Telephone: (314)-878-4310 TWX: 910-764-0831

DAYTON

3101 Kettering Blvd., Dayton, Ohio 45439
Telephone: (513)-299-7377 TWX: 810-459-1676

MILWAUKEE

6531 W. Capitol Drive, Milwaukee, Wisconsin 53222
Telephone: (414)-463-9110 TWX: 910-262-1199

DALLAS

8855 North Stemmons Freeway
Dallas, Texas 75247
Telephone: (214)-638-4880 TWX: 910-861-4000

HOUSTON

3417 Milam Street, Suite A, Houston, Texas 77002
Telephone: (713)-524-2961 TWX: 910-881-1651

SWEDEN

Digital Equipment Aktiebolag
STOCKHOLM
Vretenvagen 2, S-171 54 Solna, Sweden
Telephone: 98 13 90 Telex: 170 50
Cable: Digital Stockholm

CENTRAL (cont.)

NEW ORLEANS

3100 Ridgelake Drive, Suite 108
Metairie, Louisiana 70002
Telephone: (504)-837-0257

WEST

REGIONAL OFFICE

310 Soquel Way, Sunnyvale, California 94086
Telephone: (408)-735-9200

ANAHEIM

801 E. Ball Road, Anaheim, California 92805
Telephone: (714)-776-6932/8730 TWX: 910-591-1189

WEST LOS ANGELES

1510 Cotner Avenue, Los Angeles, California 90025
Telephone: (213)-479-3791/4318 TWX: 910-342-6999

SAN DIEGO

3444 Hancock Street
San Diego, California 92110
Telephone: (714)-298-0591, 0593 TWX: 910-335-1230

SAN FRANCISCO

1400 Terra Bella
Mountain View, California 94040
Telephone: (415)-964-6200 TWX: 910-373-1266

PALO ALTO

560 San Antonio Rd., Palo Alto, California 94306
Telephone: (415)-969-6200 TWX: 910-373-1266

OAKLAND

7850 Edgewater Drive
Oakland, California 94621
Telephone: (415)-635-5453/7830 TWX: 910-366-7238

ALBUQUERQUE

6303 Indian School Road, N.E.
Albuquerque, N.M. 87110
Telephone: (505)-296-5411/5428 TWX: 910-989-0614

DENVER

2305 South Colorado Blvd., Suite #5
Denver, Colorado 80222
Telephone: (303)-757-3332/758-1656/758-1659
TWX: 910-931-2650

SEATTLE

1521 130th N.E., Bellevue, Washington 98005
Telephone: (206)-454-4058/455-5404 TWX: 910-443-2306

SALT LAKE CITY

431 South 3rd East, Salt Lake City, Utah 84111
Telephone: (801)-328-9838 TWX: 910-925-5834

PHOENIX

4358 East Broadway Road
Phoenix, Arizona 85040
Telephone: (602) 268-3488 TWX: 910-950-4691

PORTLAND

Suite 168
5319 S.W. Canyon Court, Portland, Ore. 97221
Telephone: (503) 297-3761/3765

NEW ZEALAND

Digital Equipment Corporation Ltd.
AUCKLAND
Hilton House, 430 Queen Street, Box 2471 A,
Auckland, New Zealand
Telephone: 75-533

INTERNATIONAL (cont.)

FRANCE

Equipment Digital S.A.R.L.

PARIS

327 Rue de Charenton, 75 Paris 12^{ème}, France
Telephone: 344-76-07 Telex: 21339

GRENOBLE

10 rue Auguste Ravier, F-38 Grenoble, France
Telephone: (76) 87 87 32 Telex: 32 882 F (Code 212)

GERMANY

Digital Equipment GmbH

MUNICH

8 Muenchen 13, Wallensteinplatz 2
Telephone: 0811-35031 Telex: 524-226

COLOGNE

5 Koeln, Bismarckstrasse 7,
Telephone: 0221-522181 Telex: 888-2269
Telegram: Flip Chip Koeln

FRANKFURT

6078 Neu-Isenburg 2
Am Forsthaus Gravenbruch 5-7
Telephone: 06102-5526 Telex: 41-76-82

HANNOVER

3 Hannover, Podbielskistrasse 102
Telephone: 0511-69-70-95 Telex: 922-952

AUSTRIA

Digital Equipment Corporation Ges.m.b.H

VIENNA

Mariahilferstrasse 136, 1150 Vienna 15, Austria
Telephone: 85 51 86

UNITED KINGDOM

Digital Equipment Co., Ltd.

U.K. HEADQUARTERS

Arkwright Road, Reading, Berks.
Telephone: 0734-583555 Telex: 84327

READING

The Evening Post Building, Tessa Road
Reading, Berks.
BIRMINGHAM
29/31, Birmingham Road, Sutton Coldfield, Warwicks.
Telephone: (0044) 21-355 5501 Telex: 337 060

MANCHESTER

13 Upper Precinct, Walkden, Manchester M28 5AZ
Telephone: 061-790-8411 Telex: 668666

LONDON

Bliton House, Uxbridge Road, Ealing, London W.5.
Telephone: 01-579-2334 Telex: 22371

EDINBURGH

Shiel House, Craigshill, Livingston,
West Lothian, Scotland
Telephone: 32705 / Telex: 727113

NETHERLANDS

THE HAGUE

Digital Equipment N.V.
Sir Winston Churchilllaan 370
Rijswijk/The Hague, Netherlands
Telephone: 070-995-160 Telex: 32533

BELGIUM

BRUSSELS
Digital Equipment N.V./S.A.
108 Rue D'Arlon
1040 Brussels, Belgium
Telephone: 02-139256 Telex: 25297

NORWAY

Digital Equipment

OSLO

c/o Firma Service
Waldemarstranessgate 84-B-86
Oslo 1, Norway
Telephone: 37 19 85, 37 02 30 Telex: 166 43

DENMARK

Digital Equipment Corporation

COPENHAGEN

Vesterbrogade 140, 1620 Copenhagen V

SWITZERLAND

Digital Equipment Corporation S.A.

GENEVA

81 Route de l'Aire
CH-8006 Zurich, Switzerland
Telephone: 42 79 50 Telex: 22 683

ZURICH

Scheuchzerstrasse 21
CH-8006 Zurich, Switzerland
Telephone: 01/60 35 66* Telex: 56059

ITALY

Digital Equipment S.p.A.

MILAN

Corso Garibaldi 49, 20121 Milano, Italy
Telephone: 872 748 694 394 Telex: 33615

SPAIN

MADRID

Ataio Ingenieros S.A., Enrique Larreta 12, Madrid 16
Telephone: 215 35 43 / Telex: 27249

BARCELONA

Ataio Ingenieros S.A., Ganduxer 76, Barcelona 6
Telephone: 221 44 66
Digital Equipment Corporation Ltd.

AUSTRALIA

Digital Equipment / a Pty. Ltd.

SYDNEY

P.O. Box 491, Crows Nest
N.S.W. Australia 3065
Telephone: 439-2566 Telex: AA20740
Cable: Digital, Sydney

MELBOURNE

60 Park Street, South Melbourne, Victoria, 3205
Telephone: 696-142 Telex: AA40616

PERTH

643 Murray Street
West Perth, Western Australia 6005
Telephone: 214-993 Telex: AA92140

BRISBANE

139 Merivale Street, South Brisbane
Queensland, Australia 4101
Telephone: 444-047 Telex: AA40616

ADELAIDE

6 Montrose Avenue
Norwood, South Australia 5067
Telephone: 631-339 Telex: AA82825

CANADA

Digital Equipment of Canada, Ltd.

CANADIAN HEADQUARTERS

150 Rosamond Street, Carleton Place, Ontario
Telephone: (613)-257-2615 TWX: 610-561-1651

OTTAWA

120 Holland Street, Ottawa 3, Ontario K1Y 0X7
Telephone: (613)-725-2193 TWX: 610-562-8907

TORONTO

230 Lakeshore Road East, Port Credit, Ontario
Telephone: (416)-274-1241 TWX: 610-492-4306

MONTREAL

9675 Cote de Liesse Road
Dorval, Quebec, Canada 760
Telephone: 514-636-9393 TWX: 610-422-4124

EDMONTON

5531 - 103 Street
Edmonton, Alberta, Canada
Telephone: (403)-434-9333 TWX: 610-831-2248

VANCOUVER

Digital Equipment of Canada, Ltd.
2210 West 12th Avenue
Vancouver 9, British Columbia, Canada
Telephone: (604)-736-5616 TWX: 610-929-2006

ARGENTINA

BUENOS AIRES

Coasin S.A.
Virrey del Pino 4071, Buenos Aires
Telephone: 52-3185 Telex: 012-2284

VENEZUELA

CARACAS

Coasin S.A. (Sales only)
Apartado 50939
Salana Grande No. 1, Caracas
Telephone: 72-9637 Cable: INSTRUVEN

CHILE

SANTIAGO

Coasin Chile Ltda. (sales only)
Casilla 14588, Correo 15, Santiago
Telephone: 396713 Cable: COACHIL

JAPAN

TOKYO

Rikei Trading Co., Ltd. (sales only)
Kozato-Kaikan Bldg.
No. 18-14, Nishishimbashi 1-chome
Minato-Ku, Tokyo, Japan
Telephone: 5915246 Telex: 781-4208
Digital Equipment Corporation International

Kowa Building No. 17, Second Floor
2-7 Nishi-Azabu 1-Chome
Minato-Ku, Tokyo, Japan
Telephone: 404-5894/6 Telex: TK-6428

PHILIPPINES

Stanford Computer Corporation

P.O. Box 1603
416 Dasmarias St., Manila
Telephone: 49-68-96 Telex: 742-0352

INDIA

H.S. Sonawala Mg Director (Sales Only)
HINDITRON SERVICES PUT LTD.
69/A Nepean Sea Road
Bombay, India