

digital

PT08-B

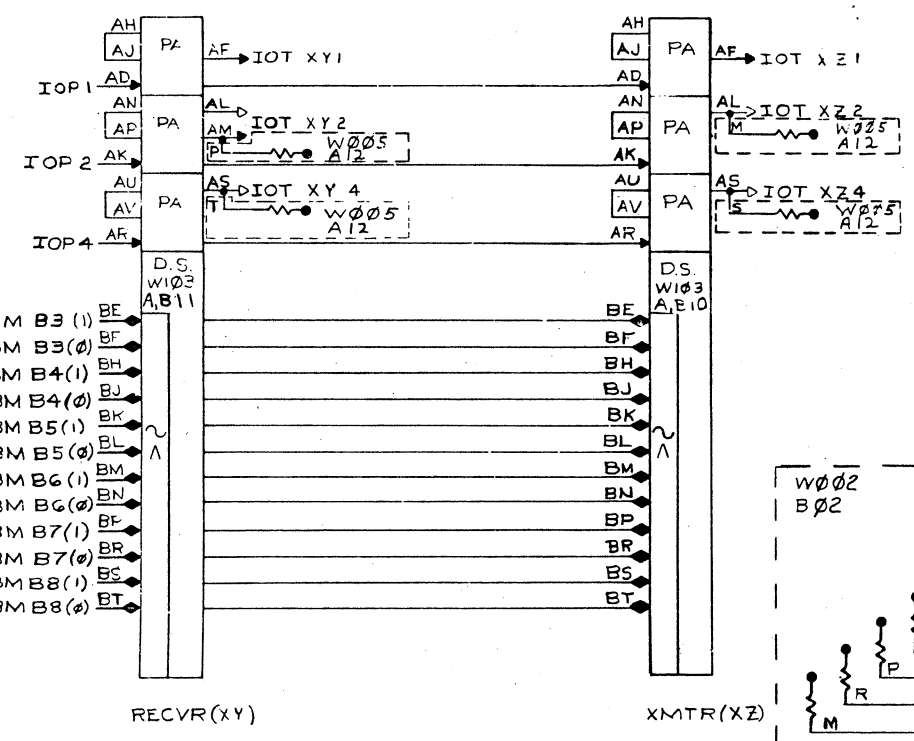
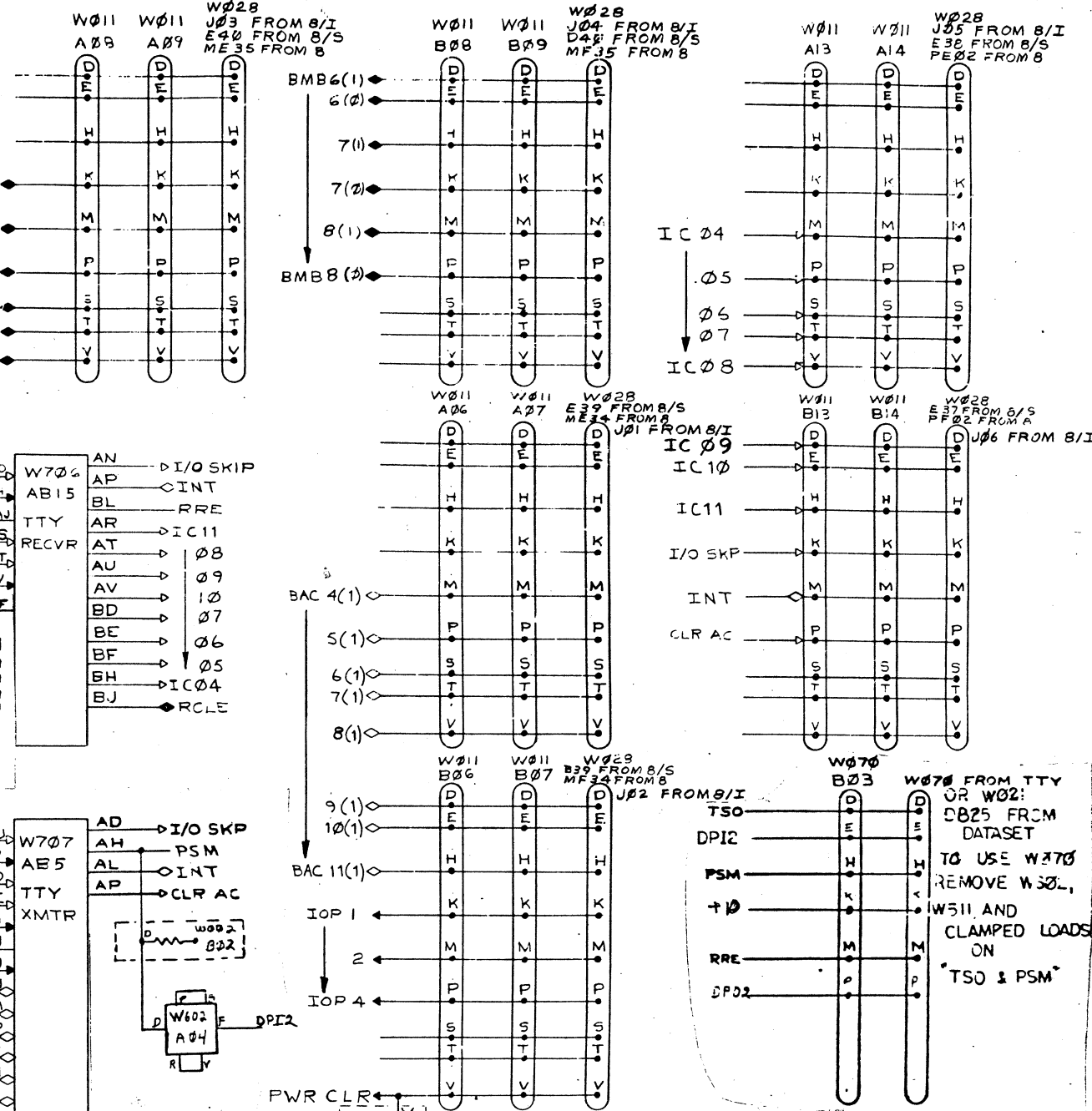
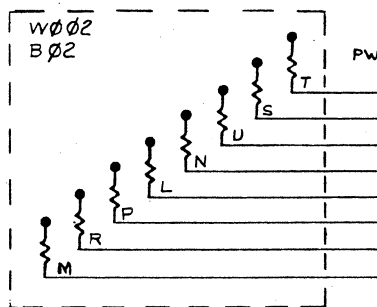
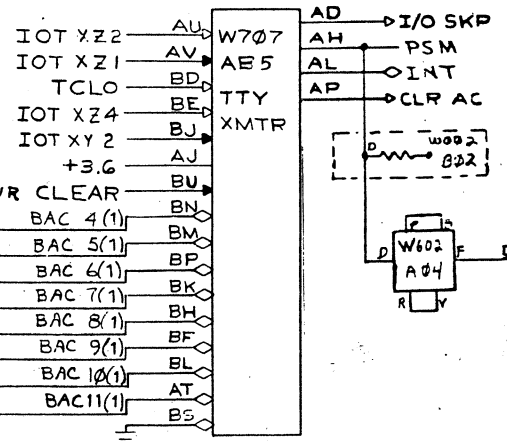
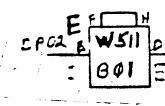
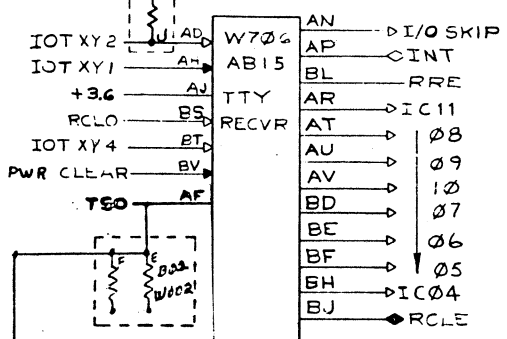
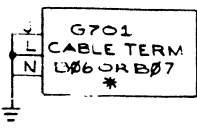
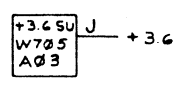
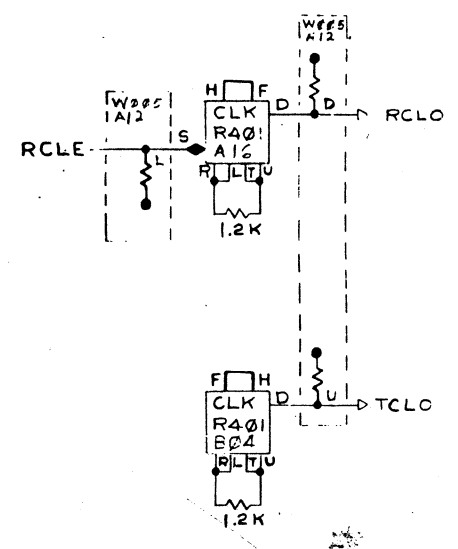
Engineering Drawings

Digital Equipment Corporation

The material herein is for information purposes only and is subject to change without notice. Digital Equipment Corporation assumes no responsibility for any errors which may appear herein.

These drawings and specifications herein are the property of Digital Equipment Corporation and shall not be reproduced or copied or used in whole or in part as the basis for the manufacture or sale of items without written permission.
Copyright © 1975, Digital Equipment Corporation

This drawing and specifications, herein, are the property of Digital Equipment Corporation and shall not be reproduced or copied or used in whole or in part as the basis for the manufacture or sale of items without written permission.



** NOTE 3
DEVICE SELECTOR CODE CAN BE SELECTED BY THE PURCHASER FROM THE FOLLOWING POSSIBILITIES

* NOTE 2
THIS MODULE CAN HAVE EITHER LOCATION DEPENDING ON WHICH OF THESE TWO SLOTS THE I/O CABLE HAS BEEN INSERTED. ON PDP-8 OR B/S COMPUTERS WITH OPTIONS OTHER THAN THE PT08, THE G701 MUST BE INSERTED IN THE I/O DEVICE AT THE END OF THE I/O CABLES IN THE CABLE SLOT THAT PROVIDES I/O BUS EXTENSION FOR IOP'S 1,2,4

NOTE 4:
TO ALLOW IOP 4 TO CLEAR THE KEYBOARD FLAG, REFER TO ECO # PT08A-00001

	RECVR	XMTR	LINE
	XY	XZ	
	40	41	1
PDP-8	42	43	2
PDP-8/S	44	45	3
	46	47	4
	11	12	5
PDP 8/S ONLY	03	04	1

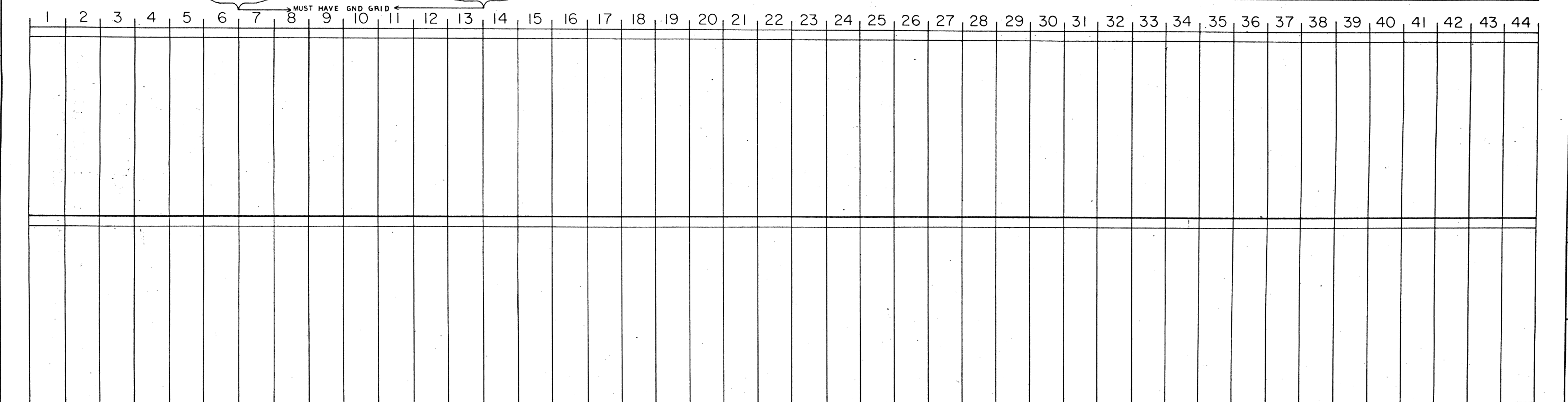
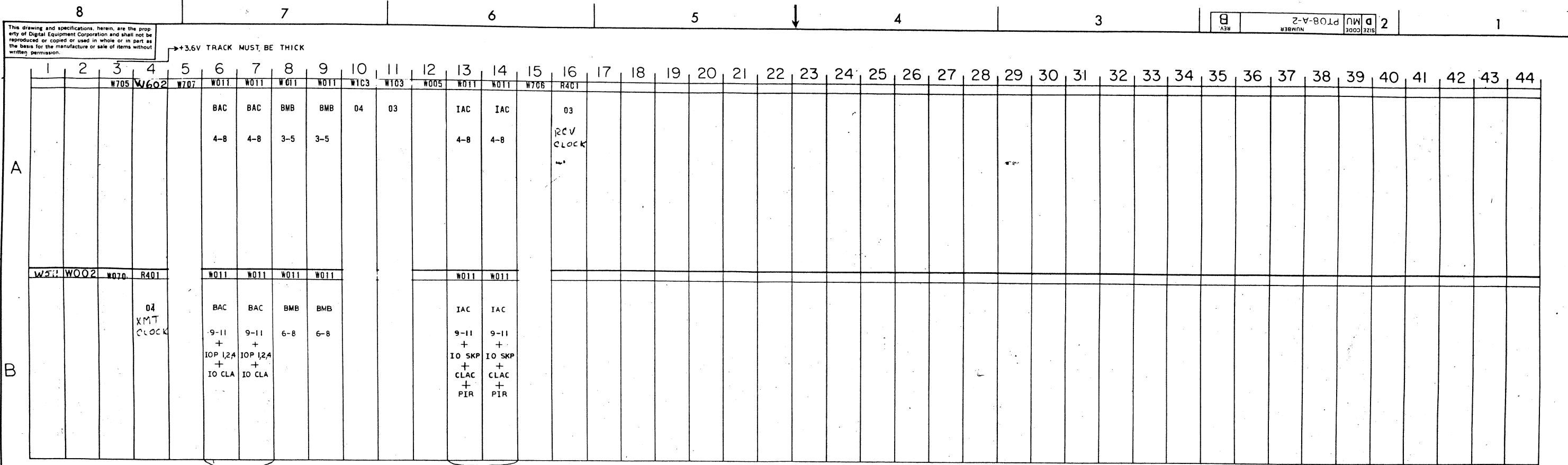
NOTE 1. ALL CABLE PINS C, F, J, L, N, R, U ARE GROUNDED

REV.	CHG.	NO.	DATE	BY	DESCRIPTION
A	ECO # 3	1-3-67			
B	ECO # 4	1-10-67			
C	ECO # 15	4-26-67			
D	ECO # 164	8-3-67			

QTY.	DESCRIPTION	PART NO.	ITEM NO.
PARTS LIST			
UNLESS OTHERWISE SPECIFIED			
DIMENSION IN INCHES			
TOLERANCES			
DECIMALS	FRACTIONS	ANGLES	
± .005	± 1/64	± 0°30'	
FINAL SURFACE QUALITY REMOVE BURRS AND BREAK SHARP CORNERS			
MATERIAL			
FINISH			
DRN. DATE			
CHK'D. DATE			
ENG. DATE			
PROJ. ENG. DATE			
DATE			
FIRST USED ON			
D-UA-PT08-A-0			
SCALE			
SHEET 1 OF 1			

digital EQUIPMENT CORPORATION
TELETYPE CONT
PT08 LOGIC

PASTE-ONS SHOW "F" OPTION



REVISIONS

CHK	CHANGE NO.	REV.
	ECO #4	A
	ECO #5	B

ECO #4 Review 7-10-67
ECO #5 Review 1-11-67

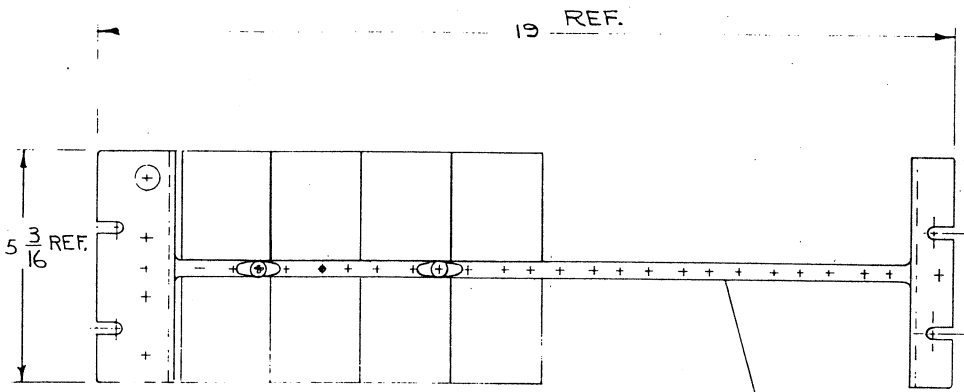
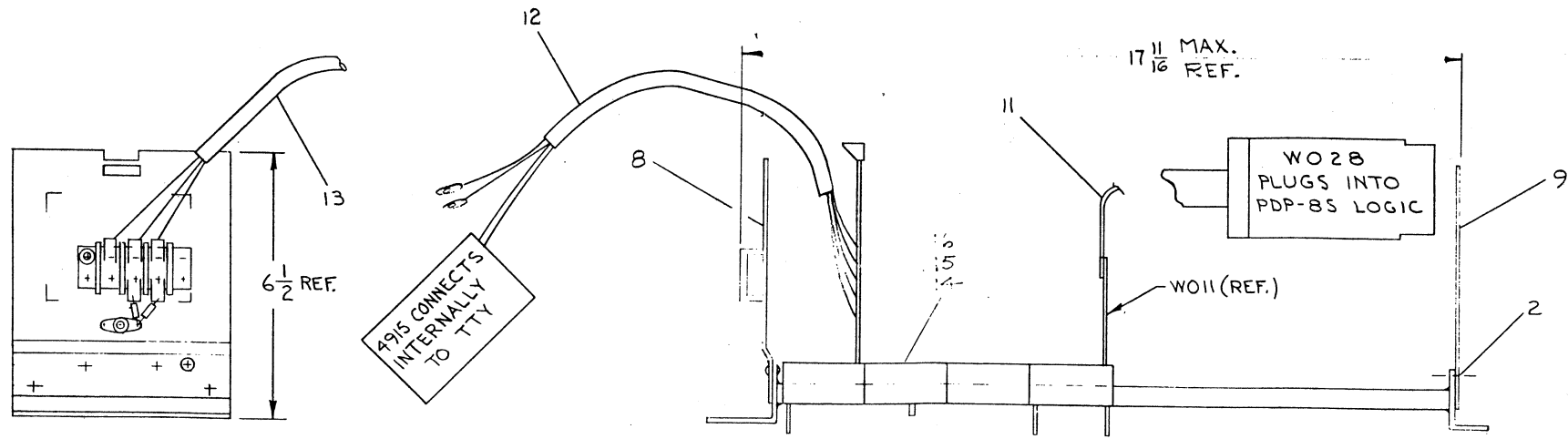
UNLESS OTHERWISE SPECIFIED	DRN. <i>R. Kicketts</i>	DATE 11/1/66
UNLESS OTHERWISE SPECIFIED	CHKD. <i>R. Kicketts</i>	DATE 12/2/66
DIMENSION IN INCHES	ENG. <i>R. Kicketts</i>	DATE 12/5/66
TOLERANCES	PROJ. ENG. <i>R. Kicketts</i>	DATE 12/5/66
DECIMALS ± .005	PROD. <i>R. Kicketts</i>	DATE 12/5/66
FRACTIONS ± 1/64		
ANGLES ± 0'30"		
FINAL SURFACE QUALITY		
REMOVE BURRS AND BREAK SHARP CORNERS		
MATERIAL	FIRST USED ON	D-UA-PT08-A-0
FINISH	SCALE	
	SHEET 1 OF 1	

digital EQUIPMENT CORPORATION
MAYNARD, MASSACHUSETTS

TITLE: MODULE LOCATION TYPE PT08

SIZE CODE: DMU PT08-A-2
NUMBER: 1
REV: B

This drawing and specifications, herein, are the property of Digital Equipment Corporation and shall not be reproduced or copied or used in whole or in part as the basis for the manufacture or sale of items without written permission.



REV.	CHANGE NO.	DESCRIPTION
A	ECO # 3371	DELETED # 3, 4, 5, 6, 7, 10 CHG # 8 DELETED NOTES
		R. P. ... 3/29/68

UNLESS OTHERWISE SPECIFIED		DRWG	DATE	PARTS LIST	
DIMENSION IN INCHES		CHECKED	DATE	digital EQUIPMENT CORPORATION	
TOLERANCES		ENG.	DATE	MAYNARD, MASSACHUSETTS	
DECIMALS	FRACTIONS	ANGLES	DATE	TITLE	
± .005	± 1/64	± 0°30'	DATE	TELE TYPE CONTROL	
FINAL SURFACE QUALITY		PROJ. ENG.	DATE	PT08-B	
REMOVE BURRS AND BREAK SHARP CORNERS		PROP.	DATE	SIZE CODE NUMBER REV.	
		DATE	DATE	DUA PT08-B-0 A	
MATERIAL		FIRST USED ON		SCALE 1/2	
//		E-UA-BSCAB-0-0		SHEET 1 OF 1	
FINISH				DIST. E.	
//					

PARTS LIST		DIGITAL EQUIPMENT CORPORATION MAYNARD, MASSACHUSETTS				REVISIONS		
PART NO.	DRWG. NO.	NO. REQD.	DESCRIPTION ITEM — STOCK SIZE — CAT. NO. — MFG.	DEC. STOCK NO.	CHANGE NO.	DATE	ENG.	
1	A-PL-7005305-0-0	1	PT08-B WIRED ASSY	7005305	A-3371	3/21 68	JR	
2		8	POP RIVER 1/8 DIAx19/64 LG. #AD43ABS ^{U.S.M.C.}	90-06509	CHG #8&9 DELETED #3,4,5, 6,7,&10			
3	EE-100153-1	1	1943 MFC PANEL LABEL (WHITE BACKGROUND)					
4		1	TERM BLOCK #602-3/4ST3 KULKA					
5		2	CAPACITOR 6.8 MFD 35V SPRAGUE					
6		1	TERM. #2116-06-00 SHAKEPROOF					
7		1	EYELET 1090 1/8 O.D. X 3/16 LG STIMPSON					
8	C-IA-5402527-0-0	1	LEFT END PANEL ASSY	5402527				
9	C-MD-5302486-0-0	1	RIGHT END PANEL	5302486-0-0				
10		4	EYELET A-1152, .192 OD X .575 LG. STIMPSON					
11	C-IA-7405600-2-0	6	CONNECTOR CABLE 8S-PT08					
12	D-AD-7005288-1-0		CABLE 4915 TO W070					
13	C-AD-705289-2-0		POWER CORD (PT08-B TO PDP-8S)					
14	SEE MDL		UTILIZATION MODULE LIST					
15	SEE MDL		UTILIZATION MODULE LIST					
16	SEE MDL		WIRING LIST					
MADE BY D. Reilly		DATE 11/10/66	TITLE TELETYPE CONTROL PT08-B		SIZE A	CODE PL	NUMBER PT08-B-0	REV. A
CHECKED D. Healy		DATE 11/28/66	FOR		ASSY. NO. D-UA-PT08-B-0		SHEET 1 OF 1	
ENG. <i>D. Novala</i>		DATE 12/6/66						

This drawing and specifications, herein, are the property of Digital Equipment Corporation and shall not be reproduced or copied or used in whole or in part as the basis for the manufacture or sale of items without written permission.

DIGITAL EQUIPMENT CORPORATION
MAYNARD, MASSACHUSETTS

ENGINEERING SPECIFICATION

DATE 4/4/68

TITLE PT08

REVISIONS

REV	DESCRIPTION	CHG NO	ORIG	DATE	APPD BY	DATE
A	CHANGED SHEET 3	261	—	4-22-68	<i>D.O. Connor</i>	4/24/68

ENG <i>Norman Wright</i>	APPD <i>N. Wright 4/4/68</i>	SIZE A	CODE SP	NUMBER PT08-A-4	REV A
-----------------------------	---------------------------------	------------------	------------	--------------------	----------

ENGINEERING SPECIFICATION



CONTINUATION SHEET

TITLE PT08

0.0 OVERALL DESCRIPTION

The PT08 is a serial to parallel-parallel to serial converter designed to work between a parallel I/O device and a serial unit such as a Teletype or an asynchronous modem.

1.0 SPECIFICATIONS

The PT08 is offered in several configurations as outlined below. Operation is identical within the unit regardless of the configuration specified.

1.1 Options.

1.1.1 PT08A

This option is used on the PDP-8/S only, and is a single channel Teletype interface mounted in the base of the Teletype unit.

1.1.2 PT08B

Single channel Teletype control, rack mounted.

1.1.3 PT08C

Dual Channel Teletype Control, rack mounted

1.1.4 PT08F

The PT08F is an option that can be installed on a PT08B or PT08C to adapt the input/output lines of the unit for operation with a modem. Two level conversion modules are added (per channel) that convert DEC levels of 0V and -3V to voltages conforming to EIA Standard RS-232B.

SIZE A	CODE SP	NUMBER PT08-A-4	REV A
------------------	------------	--------------------	----------

ENGINEERING SPECIFICATION

CONTINUATION SHEET

TITLE PT08

1.1.5 PT08FX

The PT08FX is an option that can be supplied with the F option that will adapt the unit to crystal clock control.

1.2 Mechanical Packaging

1.2.1 Dimensions

All PT08 configurations, with exception of the PT08A, are contained in a Standard 1943 mounting panel.

Width	19.0 inches
Height	5.187 inches
Depth	6.75 inches
Finish	Chromicolt
Power Connections	AMP EASTON
Panel Aid wiring used	throughout.

1.2.2 Mounting Requirements

Any standard DEC cabinet or 19 inch mounting panel will accomodate the unit (except PT08A).

1.3 Environmental Specifications

1.3.1 Operating temp. range 0°C to 55°C

1.3.2 Noise immunity ≈ 1 Volt.

1.4 Power Requirements

Power must be supplied to the unit as follows:

<u>+10V</u>	<u>-15V</u>
1.1 AMP	105 MA
(1.5 AMP)	150 MA) PT08FX only.

1.5 Margins

The unit shall operate satisfactory over the following temp. range:

+10V	_____	+2V
-15V	_____	+3V

SIZE	CODE	NUMBER	REV
A	SP	PT08-A-4	A

ENGINEERING SPECIFICATION

CONTINUATION SHEET

TITLE PT08

2.0 CABLING

2.1 I/O Cables

Six standard I/O cables are required to connect the PT08 to the PDP bus.

2.2 Teletype Cable

On units equipped for Teletype Operation, a 12 ft. cable terminated with a W070 connector is necessary.

2.3 Data Phone Cable

On units equipped for modem operation, a 25 ft. cable is required. One end terminated with a W021 connector, the other end terminated with a hooded data set connector (DB-19604-432).

3.0 Tests and/or Diagnostics

3.1 Requirements

Maindec 828
Standard PDP-8
Off-line Teletype
Six (6) I/O Cables
One Teletype Cable (12 ft.)

3.2 Procedure

Perform tests as outlined in Maindec 828

SIZE	CODE	NUMBER	REV
A	SP	PT08-A-4	A

PARTS LIST		DIGITAL EQUIPMENT CORPORATION MAYNARD, MASSACHUSETTS				REVISIONS		
PART NO.	DRWG. NO.	NO. REQD.	DESCRIPTION ITEM — STOCK SIZE — CAT. NO. — MFG.	DEC. STOCK NO.	CHANGE NO.	DATE	ENG.	
1	A-PL-7005305-0-0	1	PT08-B WIRED ASSY	7005305	A-53	7-9-68	AWR	
2		8	POP RIVET 1/8 DIAx19/64 LG. #AD43ABS ^{U.S.M.F.}	9006460	B-3475	4/23/68	AWR	
3	SS-100153-1	1	1943 MTG PANEL LABEL (WHITE BACKGROUND)		ADDED DEC STOCK NO'S			
4		1	TERM BLOCK #602-3/4ST3 KULKA	12-02491				
5		2	CAPACITOR 6.8 MFD 35V SPRAGUE	10-05306				
6		1	TERM. #2116-06-00 SHAKEPROOF	9006769				
7		1	EYELET 1090 1/8 O.D. x 3/16 LG STIMPSON	9006733				
8	C-MD-5302485-0-0	1	LEFT END PANEL	5302485				
9	C-MD-5302486-0-0	1	RIGHT END PANEL	5302486				
10		4	EYELET A-1152, .192 OD x .575 LG. STIMPSON	9006736				
11	C-IA-7405600-2-0	6	CONNECTOR CABLE 8S-PT08	74-5600-2				
12	C-IA-7005717-0-0	1	DATASET CABLE	7005717				
13	C-AD-705289-2-0		POWER CORD (PT08-B TO PDP-8S)	7005289-2				
14	SEE MDL		UTILIZATION MODULE LIST					
15	SEE MDL		UTILIZATION MODULE LIST					
16	SEE MDL		WIRING LIST					
MADE BY <i>Alan Ricketts</i>		DATE <i>12-6-66</i>	TITLE DATASET CONTROL PT08-		SIZE A	CODE PL	NUMBER 7605291-0-1	REV. B
CHECKED <i>Alan Ricketts</i>		DATE <i>12-6-66</i>	FOR		ASSY. NO. D-UA-PT08-B-0		SHEET 1 OF 1	
ENG <i>Alan Ricketts</i>		DATE <i>12/6/66</i>	G					

DEC FORM NO. DRA 109

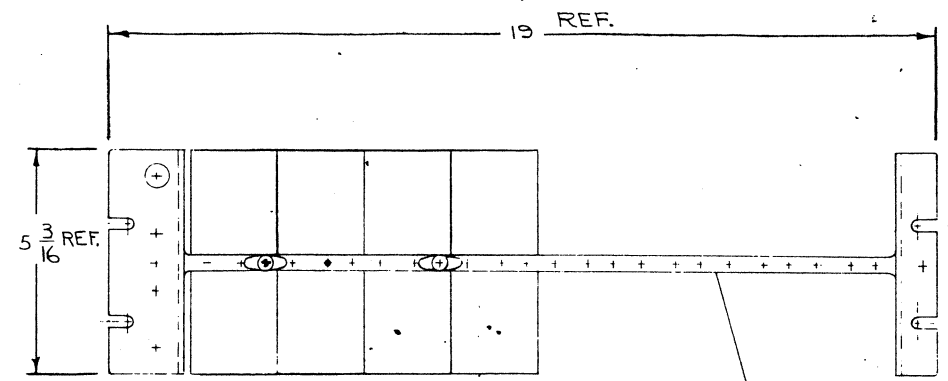
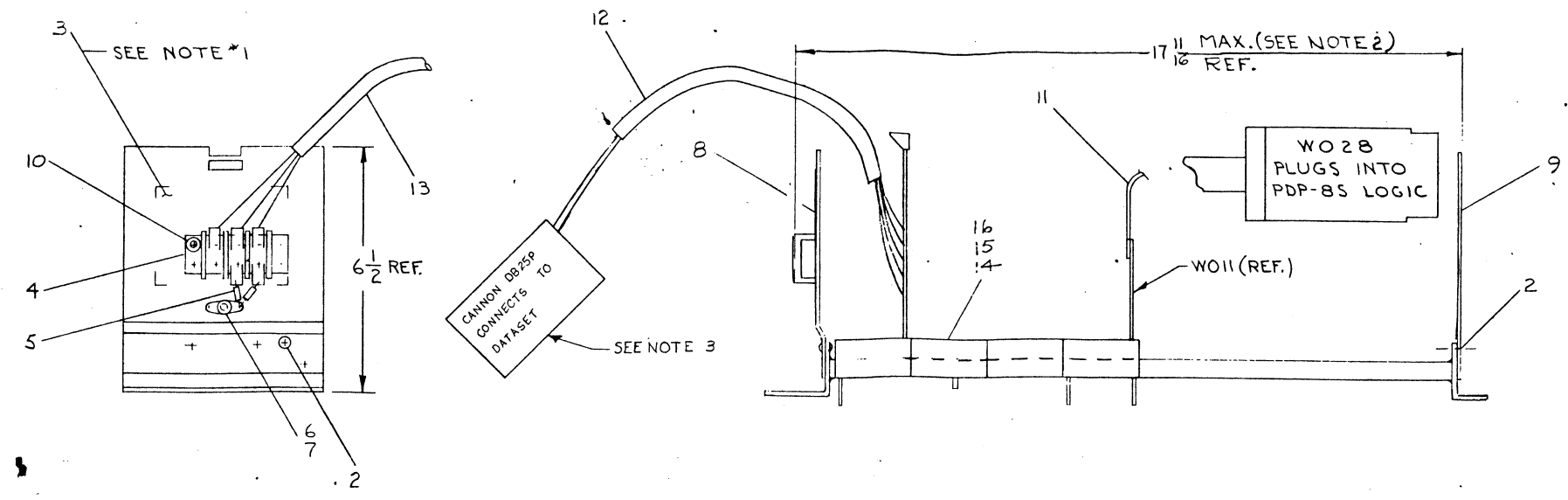
PARTS LIST		DIGITAL EQUIPMENT CORPORATION MAYNARD, MASSACHUSETTS				REVISIONS		
PART NO.	DRWG. NO.	NO. REQD.	DESCRIPTION ITEM — STOCK SIZE — CAT. NO. — MFG.	DEC. STOCK NO.	CHANGE NO.	DATE	ENG.	
		1	W705 +3,6 Volt Power Supply		A-60	7-22-68	AWR	
		2	R4Q1 CLOCK					
		1	W005 Clamped Loads					
		1	W706 TELETYPE RECEIVER					
		2	W103 DEVICE SELECTOR					
		1	W707 TELETYPE TRANSMITTER					
		1	W002 CLAMPED LOADS					
		1	W602 EIA CONVERTER					
		1	W511 NEG. INPUT CONVERTER					
		1	G-701 CABLE TERMINATOR					
MADE BY <i>Alan Ricketts</i>		DATE 12-5-66	TITLE MODULE LOCATION TYPE PT08		SIZE A	CODE PL	NUMBER 7605291-0-2	REV. A
CHECKED <i>Alan Ricketts</i>		DATE 12-5-66	FOR PT08- DATASET CONTROL		ASSY. NO. D-UA-PT08-B-0		SHEET 1 OF 1	
ENG. <i>Alan Ricketts</i>		DATE 12-5-66						

DEC FORM NO.
DRA 109

This drawing and specifications, herein, are the property of Digital Equipment Corporation and shall not be reproduced or copied or used in whole or in part as the basis for the manufacture or sale of items without written permission.

V 4 1000 2
 11/16 REF. 11 MAX. (SEE NOTE 2)
 17/16 REF.

- NOTES:**
1. DEC. STICKER TO BE APPLIED TO OUTSIDE SURFACE OF LEFT END PANEL AS SHOWN
 2. 17 11/16 REF DIM TO BE USED BY QUALITY CONTROL ONLY
 3. TO INTERFACE INKTRONIC USE CANNON DD255/CINCH DBM255 REFERENCE TO D-BS-7605291-0-8 REV. 1.

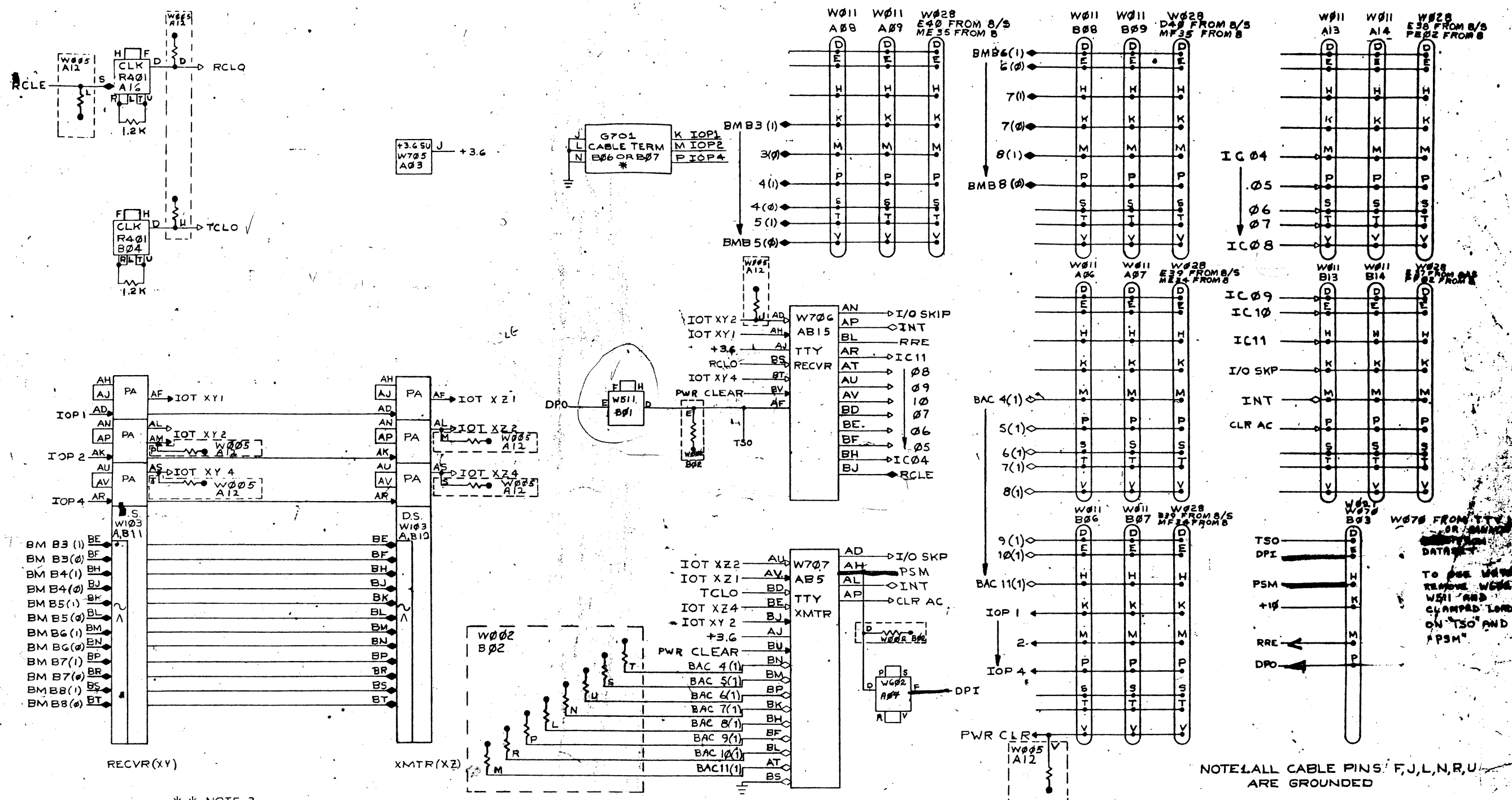


REV.	CHANGE NO.	DATE	BY	CHK
1	7605291-00001	A		
			D. PETERSON	

QTY.	DESCRIPTION	PART NO.	ITEM NO.
PARTS LIST			
UNLESS OTHERWISE SPECIFIED: DRN: C. Gille DATE: 12/2/66			
UNLESS OTHERWISE SPECIFIED: DIMENSION IN INCHES: DATE: 12/2/66			
TOLERANCES: DECIMALS: FRACTIONS: ANGLES: ±.005 ± 1/64 ± 0°30'			
FINAL SURFACE QUALITY: ✓ FIVE BURRS AND BREAK SHARP CORNERS			
MATERIAL: ---			
FINISH: ---			
SCALE: 1/2		SHEET 1 OF 1	
TITLE: DATASET CONTROL		REV. A	
PART NO.: DUA 7605291-0-4		NUMBER: 1	
DIST.:		REV.:	

NUMBER: 7605291-0-4
 SIZE CODE: DUA
 PART NO.: DUA 7605291-0-4

and specifications herein are the property of Digital Equipment Corporation and shall not be reproduced or copied in whole or in part without the written permission of Digital Equipment Corporation.



** NOTE 3
 DEVICE SELECTOR CODE CAN BE SELECTED BY THE PURCHASER FROM THE FOLLOWING POSSIBILITIES

	RECVR	XMTR	LINE
	XY	XZ	
PDP-8	40	41	1
PDP-8/S	42	43	2
	44	45	3
	46	47	4
PDP-8/S ONLY	11	12	5
	03	04	1

* NOTE 2
 THIS MODULE CAN HAVE EITHER LOCATION DEPENDING ON WHICH OF THESE TWO SLOTS THE I/O CABLE HAS BEEN INSERTED. ON PDP-8 OR 8/S COMPUTERS WITH OPTIONS OTHER THAN THE PTOB, THE G701 MUST BE INSERTED IN THE I/O DEVICE AT THE END OF THE I/O CABLES IN THE CABLE SLOT THAT PROVIDES I/O BUS EXTENSION FOR IOP'S 1,2,4

NOTE: ALL CABLE PINS F, J, L, N, R, U ARE GROUND

REVISIONS
 CHANGE NO. 1

QTY.	DESCRIPTION	PART NO.	TYPE
PARTS LIST			
UNLESS OTHERWISE SPECIFIED			
DIMENSIONS IN INCHES			
TOLERANCES			
DECIMALS	FRACTIONS	ANGLES	
± .005	± 1/64	± 0°30'	
FINISH			
REMOVE BURRS AND BREAK SHARP CORNERS			
MATERIAL			
FIRST USED ON			
DRAWN: C. Coble			
DATE: 12-2-66			
CHECKED: Alan Richetto			
DATE: 12-5-66			
ENG: Alan Richetto			
DATE: 12-5-66			
PARTIAL SURFACE QUALITY			
REMOVE BURRS AND BREAK SHARP CORNERS			
MATERIAL			
FIRST USED ON			
SCALE: 1 OF 1			
SHEET			

digital EQUIPMENT CORPORATION
 MATTAPOISETT, MASSACHUSETTS
TITLE
 DATASET OR TELETYPE CONT.
 PTOB LOGIC
 NUMBER
 DJBS 7605291-0-5
 DATE
 12-5-66

This drawing and specifications, herein, are the property of Digital Equipment Corporation and shall not be reproduced or copied or used in whole or in part as the basis for the manufacture or sale of items without written permission.

DIGITAL EQUIPMENT CORPORATION MAYNARD, MASSACHUSETTS						
ENGINEERING SPECIFICATION					DATE 4/4/68	
TITLE PT08						
REVISIONS						
REV	DESCRIPTION	CHG NO	ORIG	DATE	APPD BY	DATE
A	CHANGED SHEET 3	261	—	4-22-68	<i>D.O'Connor</i>	4/24/68

ENG <i>Norman Wright</i>	APPD <i>N. Wright 4/4/68</i>	SIZE A	CODE SP	NUMBER PT08-A-4	REV A
-----------------------------	---------------------------------	------------------	------------	--------------------	----------

DEC FORM NO.
DRA 107

SHEET 1 OF 4

ENGINEERING SPECIFICATION		000000	CONTINUATION SHEET	
TITLE PT08				
0.0	<u>OVERALL DESCRIPTION</u>			
	The PT08 is a serial to parallel-parallel to serial converter designed to work between a parallel I/O device and a serial unit such as a Teletype or an asynchronous modem.			
1.0	<u>SPECIFICATIONS</u>			
	The PT08 is offered in several configurations as outlined below. Operation is identical within the unit regardless of the configuration specified.			
1.1	<u>Options.</u>			
1.1.1	<u>PT08A</u>			
	This option is used on the PDP-8/S only, and is a single channel Teletype interface mounted in the base of the Teletype unit.			
1.1.2	<u>PT08B</u>			
	Single channel Teletype control, rack mounted.			
1.1.3	<u>PT08C</u>			
	Dual Channel Teletype Control, rack mounted			
1.1.4	<u>PT08F</u>			
	The <u>PT08F</u> is an option that can be installed on a PT08B or PT08C to adapt the input/output lines of the unit for operation with a modem. Two level conversion modules are added (per channel) that convert DEC levels of 0V and -3V to voltages conforming to EIA Standard RS-232B.			

SIZE A	CODE SP	NUMBER PT08-A-4	REV A
------------------	------------	--------------------	----------

DEC FORM NO.
DRA 108

SHEET 2 OF 4

ENGINEERING SPECIFICATION

CONTINUATION SHEET

TITLE PT08

1.1.5 PT08FX

The PT08FX is an option that can be supplied with the F option that will adapt the unit to crystal clock control.

1.2 Mechanical Packaging

1.2.1 Dimensions

All PT08 configurations, with exception of the PT08A, are contained in a Standard 1943 mounting panel.

Width	19.0 inches
Height	5.187 inches
Depth	6.75 inches
Finish	Chromicolt
Power Connections	AMP EASTON
Panel Aid wiring	used through.

1.2.2 Mounting Requirements

Any standard DEC cabinet or 19 inch mounting panel will accomodate the unit (except PT08A).

1.3 Environmental Specifications

1.3.1 Operating temp. range -0°C to +55°C

1.3.2 Noise immunity \approx 1 Volt.

1.4 Power Requirements

Power must be supplied to the unit as follows:

<u>+10V</u>	<u>-15V</u>
1.1 AMP	105 MA
(1.5 AMP	150 MA) PT08FX only.

1.5 Margins

The unit shall operate satisfactory over the following temp. range:

+10V	_____	+2V
-15V	_____	+3V

SIZE	CODE	NUMBER	REV
A	SP	PT08-A-4	A

ENGINEERING SPECIFICATION

CONTINUATION SHEET

TITLE PT08

2.0 CABLING

2.1 I/O Cables

Six standard I/O cables are required to connect the PT08 to the PDP bus.

2.2 Teletype Cable

On units equipped for Teletype Operation, a 12 ft. cable terminated with a W070 connector is necessary.

2.3 Data Phone Cable

On units equipped for modem operation, a 25 ft. cable is required. One end terminated with a W021 connector, the other end terminated with a hooded data set connector (DB-19604-432).

3.0 Tests and/or Diagnostics

3.1 Requirements

- Maindec 828
- Standard PDP-8
- Off-line Teletype
- Six (6) I/O Cables
- One Teletype Cable (12 ft.)

3.2 Procedure

Perform tests as outlined in Maindec 828

SIZE	CODE	NUMBER	REV
A	SP	PT08-A-4	A

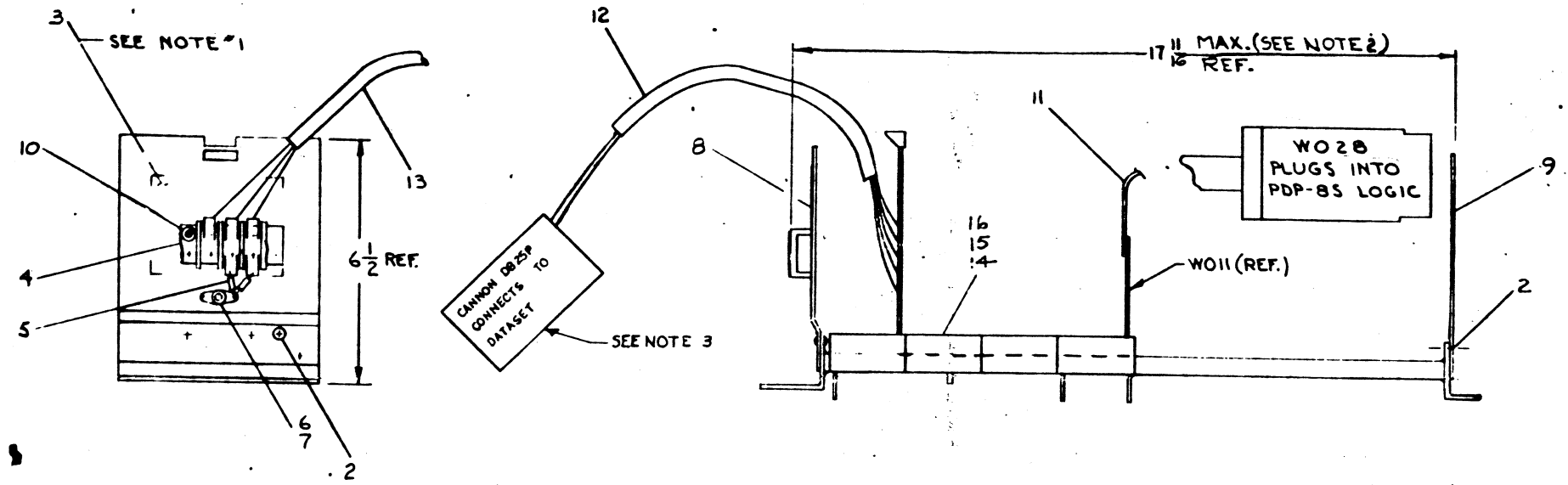
PARTS LIST		DIGITAL EQUIPMENT CORPORATION MAYNARD, MASSACHUSETTS				REVISIONS		
PART NO.	DRWG. NO.	NO. REQD.	DESCRIPTION ITEM — STOCK SIZE — CAT. NO. — MFG.	DEC. STOCK NO.	CHANGE NO.	DATE	ENG.	
1	A-PL-7005305-0-0	1	PT08-B WIRED ASSY	7005305	A-53	7-9-68	Quirk	
2		8	POP RIVET 1/8 DIAx19/64 LG. #AD43AB5 ^{U.S.M.F.}	9006460	B-3475	4/23/68	PC	
3	SS-100153-1	1	1943 MTG PANEL LABEL (WHITE BACKGROUND)		ADDED DEC STOCK NO'S			
4		1	TERM BLOCK #602-3/4ST3 KULKA	12-02491				
5		2	CAPACITOR 6.8 MFD 35V SPRAGUE	10-05306				
6		1	TERM. #2116-06-00 SHAKEPROOF	90 '69				
7		1	EYELET 1090 1/8 O.D. x 3/16 LG STIMPSON	9006733				
8	C-MD-5302485-0-0	1	LEFT END PANEL	5302485				
9	C-MD-5302486-0-0	1	RIGHT END PANEL	5302486				
10		4	EYELET A-1152, .192 OD x .575 LG. STIMPSON	9006736				
11	C-IA-7405600-2-0	6	CONNECTOR CABLE 86-PT08	74-5600-2				
12	C-IA-7005717-0-0	1	DATASET CABLE	7005717				
13	C-AD-705289-2-0		POWER CORD (PT08-B TO PDP-8S)	7005289-2				
14	SEE MDL		UTILIZATION MODULE LIST					
15	SEE MDL		UTILIZATION MODULE LIST					
16	SEE MDL		WIRING LIST					
MADE BY <i>Alan Pickett</i>		DATE 12-6-66	TITLE DATASET CONTROL PT08-	SIZE A	CODE PL	NUMBER 7605291-0-1	REV. B	
CHECKED <i>Alan Pickett</i>		DATE 12-6-66	FOR	ASSY. NO. D-UA-PT08-B-0		SHEET 1 OF 1		
ENG <i>Alan Pickett</i>		DATE 12/6/66	6					

DEC FORM NO.
DRA 109

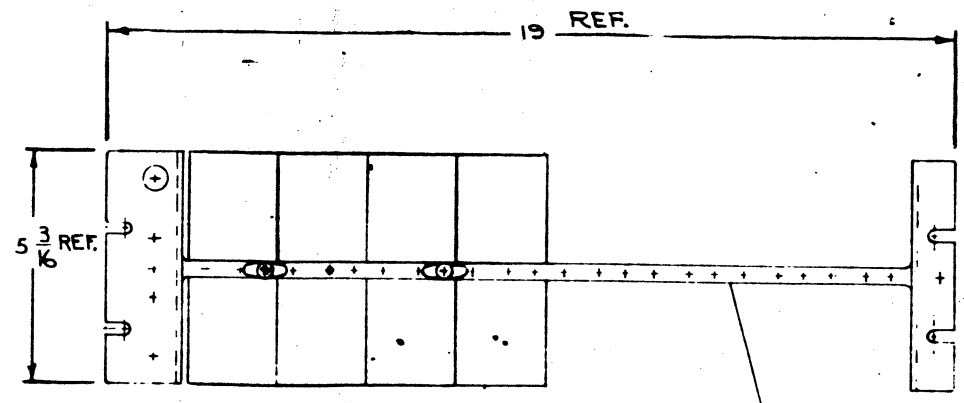
PARTS LIST		DIGITAL EQUIPMENT CORPORATION MAYNARD, MASSACHUSETTS				REVISIONS		
PART NO.	DRWG. NO.	NO. REQD.	DESCRIPTION ITEM — STOCK SIZE — CAT. NO. — MFG.	DEC. STOCK NO.	CHANGE NO.	DATE	ENG.	
		1	W705 +3,6 Volt Power Supply		A-61	4-22-68	QuR	
		1	R405 CLOCK					
		1	W005 Clamped Loads					
		1	W706 TELETYPE RECEIVER					
		2	W103 DEVICE SELECTOR					
		1	W707 TELETYPE TRANSMITTER					
		1	W002 CLAMPED LOADS					
		1	G701 CABLE TERMINATOR					
		1	W511 NEG. INPUT CONVERTER					
		1	W602 EIA CONVERTER					
		1	W708 INTERFACER					
		1	W709 COUNTER * SEE NOTE 3 ON D-BS-7605291-0-R					
MADE BY <i>Sto</i>		DATE <i>7/29/68</i>	TITLE MODULE LOCATION TYPE PROB-FX		SIZE A	CODE PL	NUMBER 7605291-0-7	REV. A
CHECKED <i>Robette</i>		DATE <i>3/28/68</i>	FOR		ASSY. NO.		SHEET 1 OF 1	
DRAWN <i>Robette</i>		DATE <i>12/1/67</i>						

The drawing and specifications herein are the property of Digital Equipment Corporation and shall not be reproduced or copied or used in whole or in part without the prior written permission of the manufacturer or user of this document.

4-0-162509L VOB 2



- NOTES:**
1. DEC. STICKER TO BE APPLIED TO OUTSIDE SURFACE OF LEFT END PANEL AS SHOWN
 2. 17 1/2 REF. DIM TO BE USED BY QUALITY CONTROL ONLY
 3. TO INTERFACE INKTRONIC USE CANNON DD255/CINCH DBM255 REFERENCE TO D-B5-7605291-0-B REV. 1.



REVISIONS
 CHANGE NO. 1
 DATE 760529-00001
 BY D. PETERSON

UNLESS OTHERWISE SPECIFIED
 DIMENSIONS IN INCHES
 TOLERANCES
 DIMENSIONAL FINISHES
 FINISH

QTY.	DESCRIPTION	PART NO.	REV.
PARTS LIST			
EQUIPMENT CORPORATION		TITLE	
DATASET CONTROL		PT08-	
SCALE 1/2		DRAWING NUMBER	
SHEET 1 OF 1		DNA 7605291-0-4 A	

TITLE PT08

1.1.5 PT08FX

The PT08FX is an option that can be supplied with the F option that will adapt the unit to crystal clock control.

1.2 Mechanical Packaging

1.2.1 Dimensions

All PT08 configurations, with exception of the PT08A, are contained in a Standard 1943 mounting panel.

Width	19.0 inches
Height	5.187 inches
Depth	6.75 inches
Finish	Chromicolt
Power Connections	AMP EASTON
Panel Aid wiring	used through.

1.2.2 Mounting Requirements

Any standard DEC cabinet or 19 inch mounting panel will accommodate the unit (except PT08A).

1.3 Environmental Specifications

1.3.1 Operating temp. range -5°C to +55°C

1.3.2 Noise immunity ≥ 1 Volt.

1.4 Power Requirements

Power must be supplied to the unit as follows:

<u>+10V</u>	<u>-15V</u>
1.1 AMP	105 MA
(1.5 AMP	150 MA) PT08FX only.

1.5 Margins

The unit shall operate satisfactory over the following temp. range:

+10V	_____	+2V
-15V	_____	+3V

SIZE	CODE	NUMBER	REV
A	SP	PT08-A-4	A

TITLE PT08

2.0 CABLING

2.1 I/O Cables

Six standard I/O cables are required to connect the PT08 to the PDP bus.

2.2 Teletype Cable

On units equipped for Teletype Operation, a 12 ft. cable terminated with a W070 connector is necessary.

2.3 Data Phone Cable

On units equipped for modem operation, a 25 ft. cable is required. One end terminated with a W021 connector, the other end terminated with a hooded data set connector (DB-19604-432).

3.0 Tests and/or Diagnostics

3.1 Requirements

- Maindec 828
- Standard PDP-8
- Off-line Teletype
- Six (6) I/O Cables
- One Teletype Cable (12 ft.)

3.2 Procedure

Perform tests as outlined in Maindec 828

SIZE	CODE	NUMBER	REV
A	SP	PT08-A-4	A

	1	2	3	4	5	6	7	8	9	10	11	12	13	14	15	16
A					W705	R401 RX	W707	W706	W103 TX	W103 RX	IAC 4-8 (8/I J5)		BAC 4-8 (8/I J1)		BMB 3-5 (8/I J3)	
B				W070	W005	R401 TX					IAC 9-11 (8/I J6)		BAC 9-11 (8/I J2)		BMB 6-8 (8/I J4)	

Module location derived from tracing wiring. Unused slots have no connections other than power.