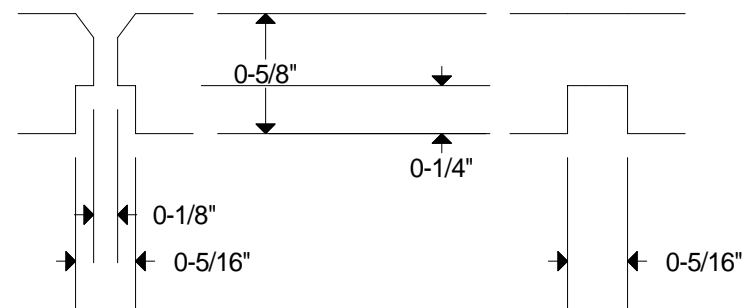


## Notes

- \* Material is 5/8" thick *black* PVC
- \* The holes marked with A are countersunk on the top side to fit a 4-40 flat head screw, AND also countersunk on the bottom side to clear the swage solder in eyelets as shown in Detail A.
- \* The holes marked with B are countersunk on the back side only to clear the Compact Flash card mounting screws as shown in Detail B.
- \* All measurements +/- 1/32" (0.03125).

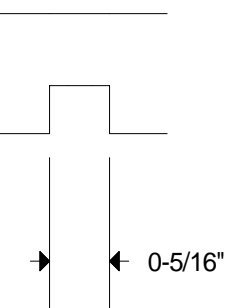
## Detail A

Side View



## Detail B

Side View



**FP6120**  
LED BAR

SIZE  
**B**

Copyright (C) 2003, 2006 by Spare Time Gizmos.  
Usage subject to license. Refer to the included license file for details.

REV  
**B**

NOT TO SCALE

SHEET 1 OF 1

