

DECUS

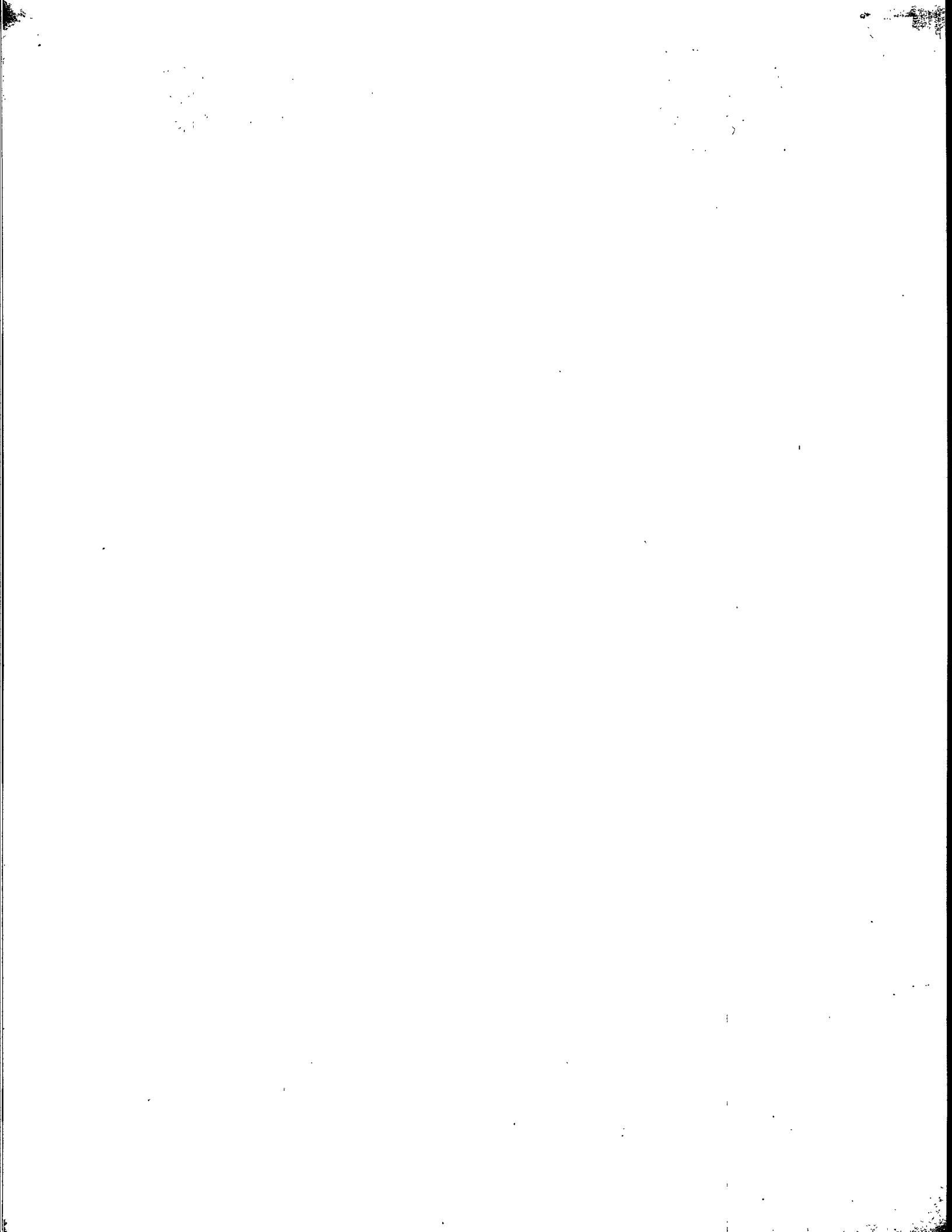
PROGRAM LIBRARY

| | |
|-----------------|---|
| DECUS NO. | 8-276 |
| TITLE | CORE EDITOR |
| AUTHOR | Anthony Bolton |
| COMPANY | Wilton High School Wilton, Connecticut |
| DATE | June 4, 1970 |
| SOURCE LANGUAGE | PAL III |

ATTENTION

This is a USER program. Other than requiring that it conform to submittal and review standards, no quality control has been imposed upon this program by DECUS.

The DECUS Program Library is a clearing house only; it does not generate or test programs. No warranty, express or implied, is made by the contributor, Digital Equipment Computer Users Society or Digital Equipment Corporation as to the accuracy or functioning of the program or related material, and no responsibility is assumed by these parties in connection therewith.



CORE EDITOR

DECUS Program Library Write-up

DECUS No. 8-276

Explanation of program:

List command: Gives an octal listing of the location(s) designated.

Example: LIST 1234,1237 or LIST 1261

Change command: Changes the location indicated to the octal number indicated.

Example: CHANGE 1234 TO 7300

Write command: Writes in binary format on tape the contents of the locations indicated by the user. It gives an accurate checksum at the end.

Example: WRITE 1261, 1277

M command: Upon pressing the M key on the teletype the computer will respond with, (=), and will wait for the user to type in an octal number after which the teletype will return and line feed. The memory will be set to the number inputted with the exception of locations 6600 to 7777.

Example: M = 7000

Search command: The computer will wait for a number to be searched for, and a location to start from. If the user wants to search for the next occurrence of the number, he types a "C" (Continue), or if the user wishes to exit from the routine he types an "H" (Halt).

Example: SEARCH 7300 FROM 0000

R command: Runs a program in core after the user types the starting address of the program.

Example: R 0000 - Runs a program that starts at 0

Insert command: Inserts a number in core at a given location. Upon pressing a space it increments the location and waits for the user to type in what he wants there. If the user wants to exit from the program, he types a dollar sign.

Example: INSERT 1256

See: SAMPLE OF RUN

Note: All octal number input must be 4 digits.

/AB: CORE EDITOR
 /WRITE COMMAND
 /BINARY PUNCH ROUTINE
 *6600

| | | | | |
|------|------|-------|------------|---------------------|
| 6600 | 4765 | BNWT, | JMS I TAKE | |
| 6601 | 1366 | | TAD SPAC | |
| 6602 | 7640 | | SZA CLA | |
| 6603 | 5200 | | JMP BNWT | |
| 6604 | 4320 | | JMS STRT | |
| 6605 | 3367 | | DCA HLD6 | /HOLD FRST NUMBER . |
| 6606 | 4765 | | JMS I TAKE | |
| 6607 | 1370 | | TAD CAMA | |
| 6610 | 7640 | | SZA CLA | |
| 6611 | 5771 | | JMP I ERRR | |
| 6612 | 4320 | | JMS STRT | |
| 6613 | 3372 | | DCA HLD9 | /HOLD SECOND NUMBER |
| 6614 | 4751 | | JMS I ZCOR | |
| 6615 | 4302 | | JMS CRLF | |
| 6616 | 4220 | | JMS LDER | |
| 6617 | 5231 | | JMP NNOX | |
| 6620 | 0000 | LDER, | 0 | |
| 6621 | 1375 | | TAD N200 | |
| 6622 | 7040 | | CMA | |
| 6623 | 3374 | | DCA NCCX | |
| 6624 | 1375 | NNOR, | TAD N200 | |
| 6625 | 4764 | | JMS I TYP8 | |
| 6626 | 2374 | | ISZ NCCX | |
| 6627 | 5224 | | JMP NNOR | |
| 6630 | 5620 | | JMP I LDER | |
| 6631 | 1367 | NNOX, | TAD HLD6 | |
| 6632 | 0360 | | AND LOCA | |
| 6633 | 4757 | | JMS I RTRX | |
| 6634 | 1361 | | TAD PDP9 | |
| 6635 | 4311 | | JMS CHEK | |
| 6636 | 4764 | | JMS I TYP8 | |
| 6637 | 1367 | | TAD HLD6 | |
| 6640 | 0363 | | AND PDP7 | |
| 6641 | 4311 | | JMS CHEK | |
| 6642 | 4764 | | JMS I TYP8 | |
| 6643 | 1372 | TRST, | TAD HLD9 | |
| 6644 | 7040 | | CMA | |
| 6645 | 1367 | | TAD HLD6 | |
| 6646 | 3362 | | DCA NCCD | |
| 6647 | 1767 | TOKI, | TAD I HLD6 | |
| 6650 | 4266 | | JMS BPUN | |
| 6651 | 2367 | | ISZ HLD6 | |
| 6652 | 2362 | | ISZ NCCD | |
| 6653 | 5247 | | JMP TOKI | |
| 6654 | 1356 | | TAD REM2 | |
| 6655 | 0360 | | AND LOCA | |

| | | | |
|------|------|---------------------------------|------------|
| 6656 | 4757 | | JMS I RTRX |
| 6657 | 4764 | | JMS I TYP8 |
| 6660 | 1356 | | TAD REM2 |
| 6661 | 0363 | | AND PDP7 |
| 6662 | 4764 | | JMS I TYP8 |
| 6663 | 1360 | | TAD LOCA |
| 6664 | 4220 | | JMS LDER |
| 6665 | 5777 | | JMP I RDYX |
| 6666 | 0000 | BPUN, | 0 |
| 6667 | 3376 | | DCA LTPX |
| 6670 | 1376 | | TAD LTPX |
| 6671 | 0360 | | AND LOCA |
| 6672 | 4757 | | JMS I RTRX |
| 6673 | 4311 | | JMS CHEK |
| 6674 | 4764 | | JMS I TYP8 |
| 6675 | 1376 | | TAD LTPX |
| 6676 | 0363 | | AND PDP7 |
| 6677 | 4311 | | JMS CHEK |
| 6700 | 4764 | | JMS I TYP8 |
| 6701 | 5666 | | JMP I BPUN |
| 6702 | 0000 | CRLF, | 0 |
| 6703 | 7300 | | CLA CLL |
| 6704 | 1350 | | TAD N222 |
| 6705 | 4764 | | JMS I TYP8 |
| 6706 | 1373 | | TAD NNT2 |
| 6707 | 4764 | | JMS I TYP8 |
| 6710 | 5702 | | JMP I CRLF |
| 6711 | 0000 | CHEK, | 0 |
| 6712 | 3355 | | DCA TLS2 |
| 6713 | 1355 | | TAD TLS2 |
| 6714 | 1356 | | TAD REM2 |
| 6715 | 3356 | | DCA REM2 |
| 6716 | 1355 | | TAD TLS2 |
| 6717 | 5711 | | JMP I CHEK |
| | | /SUBROUTINE FOR INPUTTING OCTAL | |
| 6720 | 0000 | STRT, | 0 |
| 6721 | 4765 | | JMS I TAKE |
| 6722 | 0354 | | AND SNER |
| 6723 | 4753 | | JMS I RTLS |
| 6724 | 7006 | | RTL |
| 6725 | 7004 | | RAL |
| 6726 | 3346 | | DCA FRST |
| 6727 | 4765 | | JMS I TAKE |
| 6730 | 0354 | | AND SNER |
| 6731 | 4753 | | JMS I RTLS |
| 6732 | 3347 | | DCA SCND |
| 6733 | 4765 | | JMS I TAKE |
| 6734 | 0354 | | AND SNER |
| 6735 | 7006 | | RTL |
| 6736 | 7004 | | RAL |

| | | | |
|------|------|-------|------------|
| 6737 | 3352 | | DCA THRD |
| 6740 | 4765 | | JMS I TAKE |
| 6741 | 0354 | | AND SNER |
| 6742 | 1346 | | TAD FRST |
| 6743 | 1347 | | TAD SCND |
| 6744 | 1352 | | TAD THRD |
| 6745 | 5720 | | JMP I STRT |
| 6746 | 0000 | FRST, | 0 |
| 6747 | 0000 | SCND, | 0 |
| 6750 | 0215 | N222, | 215 |
| 6751 | 7103 | ZCOR, | IPUT |
| 6752 | 0000 | THRD, | 0 |
| 6753 | 7461 | RTLS, | RTLX |
| 6754 | 0007 | SNER, | 0007 |
| 6755 | 0000 | TLS2, | 0 |
| 6756 | 0000 | REM2, | 0 |
| 6757 | 7267 | RTRX, | RTRS |
| 6760 | 7700 | LOCA, | 7700 |
| 6761 | 0100 | PDP9, | 0100 |
| 6762 | 0000 | NCCD, | 0 |
| 6763 | 0077 | PDP7, | 0077 |
| 6764 | 7453 | TYP8, | PRTN |
| 6765 | 7111 | TAKE, | TYIN |
| 6766 | 7540 | SPAC, | 7540 |
| 6767 | 0000 | HLD6, | 0 |
| 6770 | 7524 | CAMA, | 7524 |
| 6771 | 7476 | ERRR, | ERCN |
| 6772 | 0000 | HLD9, | 0 |
| 6773 | 0212 | NN12, | 212 |
| 6774 | 0000 | NCCX, | 0 |
| 6775 | 0200 | N200, | 200 |
| 6776 | 0000 | LTPX, | 0 |
| 6777 | 7003 | RDYX, | REDY |

/START OF PROGRAM
*7000

| | | | |
|------|------|-------|------------|
| 7000 | 7300 | | CLA CLL |
| 7001 | 6046 | | TLS |
| 7002 | 6032 | | KCC |
| 7003 | 5765 | REDY, | JMP I XCOR |
| 7004 | 1366 | NTPE, | TAD ASTR |
| 7005 | 4315 | | JMS TYPT |
| 7006 | 4311 | | JMS TYIN |
| 7007 | 3362 | | DCA TEM8 |
| 7010 | 1362 | | TAD TEM8 |
| 7011 | 1347 | | TAD MEMD |
| 7012 | 7650 | | SNA CLA |
| 7013 | 5746 | | JMP I XPPP |
| 7014 | 1362 | | TAD TEM8 |
| 7015 | 1350 | | TAD CCHK |

/TYPE READY
/CHECK FOR COMMANDS

| | | | | |
|------|------|-------|------------|--------------------------|
| 7016 | 7650 | | SNA CLA | |
| 7017 | 5276 | | JMP SCOR | |
| 7020 | 1362 | | TAD TEM8 | |
| 7021 | 1355 | | TAD INSR | |
| 7022 | 7650 | | SNA CLA | |
| 7023 | 5322 | | JMP OCOR | |
| 7024 | 1362 | | TAD TEM8 | |
| 7025 | 1353 | | TAD SRCH | |
| 7026 | 7650 | | SNA CLA | |
| 7027 | 5754 | | JMP I XRUN | |
| 7030 | 1362 | | TAD TEM8 | |
| 7031 | 1376 | | TAD WRTE | |
| 7032 | 7650 | | SNA CLA | |
| 7033 | 5777 | | JMP I WRIT | |
| 7034 | 1362 | | TAD TEM8 | |
| 7035 | 1363 | | TAD CHNG | |
| 7036 | 7650 | | SNA CLA | |
| 7037 | 5252 | | JMP BEGN | |
| 7040 | 1362 | | TAD TEM8 | |
| 7041 | 1364 | | TAD LIST | |
| 7042 | 7440 | | SZA | |
| 7043 | 5771 | | JMP I NRON | |
| 7044 | 4311 | LOOK, | JMS TYIN | /CHECK FOR SPACE |
| 7045 | 1372 | | TAD SPCE | |
| 7046 | 7640 | | SZA CLA | |
| 7047 | 5244 | | JMP LOOK | |
| 7050 | 4767 | LSTC, | JMS I INDR | |
| 7051 | 5774 | | JMP I NDOP | |
| 7052 | 4311 | BEGN, | JMS TYIN | /CHANGE COMMAND, ROUTINE |
| 7053 | 1372 | | TAD SPCE | |
| 7054 | 7640 | | SZA CLA | |
| 7055 | 5252 | | JMP BEGN | |
| 7056 | 4767 | DEC2, | JMS I INDR | /GET FIRST NUMBER |
| 7057 | 3375 | | DCA NSIR | |
| 7060 | 4311 | | JMS TYIN | /CHECK FOR FORMAT |
| 7061 | 1372 | | TAD SPCE | |
| 7062 | 7440 | | SZA | |
| 7063 | 5771 | | JMP I NRON | |
| 7064 | 4311 | | JMS TYIN | |
| 7065 | 4311 | | JMS TYIN | |
| 7066 | 4311 | | JMS TYIN | |
| 7067 | 4767 | | JMS I INDR | /GET SECOND NUMBER |
| 7070 | 3361 | | DCA HTHR | |
| 7071 | 4303 | | JMS IPUT | |
| 7072 | 4756 | | JMS I CRLN | |
| 7073 | 1361 | | TAD HTHR | |
| 7074 | 3775 | | DCA I NSIR | |
| 7075 | 5203 | | JMP REDY | |
| 7076 | 4311 | SCOR, | JMS TYIN | |
| 7077 | 4767 | | JMS I INDR | |

| | | | |
|------|------|-------|------------|
| 7100 | 3362 | | DCA TEM8 |
| 7101 | 4756 | | JMS I CRLN |
| 7102 | 5762 | | JMP I TEM8 |
| 7103 | 0000 | IPUT, | Ø |
| 7104 | 7300 | | CLA CLL |
| 7105 | 6031 | | KSF |
| 7106 | 5305 | | JMP IPUT+2 |
| 7107 | 6036 | | KRB |
| 7110 | 5703 | | JMP I IPUT |
| 7111 | 0000 | TYIN, | Ø |
| 7112 | 4303 | | JMS IPUT |
| 7113 | 4315 | | JMS TYPT |
| 7114 | 5711 | | JMP I TYIN |
| 7115 | 0000 | TYPT, | Ø |
| 7116 | 6041 | | TSF |
| 7117 | 5316 | | JMP TYPT+1 |
| 7120 | 6046 | | TLS |
| 7121 | 5715 | | JMP I TYPT |
| 7122 | 4311 | OCOR, | JMS TYIN |
| 7123 | 1372 | | TAD SPCE |
| 7124 | 7640 | | SZA CLA |
| 7125 | 5322 | | JMP OCOR |
| 7126 | 4767 | | JMS I INDR |
| 7127 | 5770 | | JMP I LONN |
| 7130 | 4756 | NSSS, | JMS I CRLN |
| 7131 | 4311 | | JMS TYIN |
| 7132 | 3362 | | DCA TEM8 |
| 7133 | 1362 | | TAD TEM8 |
| 7134 | 1372 | | TAD SPCE |
| 7135 | 7650 | | SNA CLA |
| 7136 | 5752 | | JMP I SNOR |
| 7137 | 1362 | XRUU, | TAD TEM8 |
| 7140 | 1344 | | TAD DLLR |
| 7141 | 7650 | | SNA CLA |
| 7142 | 5745 | | JMP I RDDY |
| 7143 | 5771 | | JMP I NRON |
| 7144 | 7534 | DLLR, | 7534 |
| 7145 | 7003 | RDDY, | REDY |
| 7146 | 7325 | XPPP, | RUSB |
| 7147 | 7463 | MEMD, | 7463 |
| 7150 | 7456 | CCHK, | 7456 |
| 7151 | 0000 | SECN, | Ø |
| 7152 | 7534 | SNOR, | ICOR |
| 7153 | 7455 | SRCH, | 7455 |
| 7154 | 7224 | XRUN, | SERH |
| 7155 | 7467 | INSR, | 7467 |
| 7156 | 6702 | CRLN, | CRLF |
| 7157 | 7461 | 0000 | 7461 |
| 7160 | 7454 | TTTT, | 7454 |

| | | | |
|------|-----------------|-------|-----------------|
| 7161 | 0000 | HTHR, | 0 |
| 7162 | 0000 | TEM8, | 0 |
| 7163 | 7475 | CHNG, | 7475 |
| 7164 | 7464 | LIST, | 7464 |
| 7165 | 7436 | XCOR, | NOW2 |
| 7166 | 0252 | ASTR, | 252 |
| 7167 | 6720 | INDR, | STRT |
| 7170 | 7532 | LONN, | INST |
| 7171 | 7476 | NRON, | ERCN |
| 7172 | 7540 | SPCE, | 7540 |
| 7173 | 7563 | RETN, | 7563 |
| 7174 | 7250 | NDOP, | NDOX |
| 7175 | 0000 | NSIR, | 0 |
| 7176 | 7451 | WRTE, | 7451 |
| 7177 | 6600 | WRIT, | BNWT |

*7200

/SERCH ROUTINE

| | | | |
|------------------|-----------------|-------|------------|
| 7200, | 1366 | NOW3, | TAD CORE |
| 7201 | 1362 | | TAD HHHH |
| 7202 | 7640 | | SZA CLA |
| 7203 | 5754 | | JMP I XPRR |
| 7204 | 5745 | | JMP I RDYY |
| 7205 | 1351 | TUNE, | TAD PARR |
| 7206 | 4274 | | JMS OTPT |
| 7207 | 4770 | | JMS I XNOR |
| 7210 | 1751 | | TAD I PARR |
| 7211 | 4274 | | JMS OTPT |
| 7212 | 4760 | | JMS I CRXH |
| 7213 | 4763 | LISN, | JMS I READ |
| 7214 | 3366 | | DCA CORE |
| 7215 | 1366 | | TAD CORE |
| 7216 | 1361 | | TAD CCCC |
| 7217 | 7640 | | SZA CLA |
| 7220 | 5200 | | JMP NOW3 |
| 7221 | 4760 | | JMS I CRXH |
| 7222 | 2351 | | ISZ PARR |
| 7223 | 5241 | | JMP HETR |
| 7224 | 4763 | SERH, | JMS I READ |
| 7225 | 1346 | | TAD TKS2 |
| 7226 | 7640 | | SZA CLA |
| 7227 | 5224 | | JMP SERH |
| 7230 | 4752 | | JMS I STRZ |
| 7231 | 3350 | | DCA LOC5 |
| 7232 | 4753 | | JMS I FROM |
| 7233 | 4752 | | JMS I STRZ |
| 7234 | 3351 | | DCA PARR |
| 7235 | 4760 | | JMS I CRXH |
| 7236 | 1350 | | TAD LOC5 |
| 7237 | 7041 | | CIA |
| 7240 | 3347 | | DCA NXT4 |

| | | | | |
|------|------|-------|------------|--------------------------|
| 7241 | 1751 | HETR, | TAD I PARR | |
| 7242 | 1347 | | TAD NXT4 | |
| 7243 | 7650 | | SNA CLA | |
| 7244 | 5205 | | JMP TUNE | |
| 7245 | 2351 | | ISZ PARR | |
| 7246 | 5241 | | JMP HETR | |
| 7247 | 5745 | | JMP I RDYY | |
| 7250 | 3344 | NDOX, | DCA HOLD | |
| 7251 | 4763 | NDOR, | JMS I READ | |
| 7252 | 3375 | | DCA CPXP | |
| 7253 | 1375 | | TAD CPXP | |
| 7254 | 1364 | | TAD RETR | |
| 7255 | 7640 | | SZA CLA | |
| 7256 | 5765 | | JMP I XROR | |
| 7257 | 4760 | | JMS I CRXH | |
| 7260 | 1344 | | TAD HOLD | |
| 7261 | 4274 | | JMS OTPT | |
| 7262 | 4770 | | JMS I XNOR | |
| 7263 | 1744 | | TAD I HOLD | |
| 7264 | 4274 | | JMS OTPT | |
| 7265 | 4760 | | JMS I CRXH | |
| 7266 | 5767 | | JMP I LOCC | |
| 7267 | 0000 | RTRS, | 0 | |
| 7270 | 7112 | | CLL RTR | |
| 7271 | 7012 | | RTR | |
| 7272 | 7012 | | RTR | |
| 7273 | 5667 | | JMP I RTRS | |
| 7274 | 0000 | OTPT, | 0 | /OUTPUT OCTAL SUBROUTINE |
| 7275 | 3366 | | DCA CORE | |
| 7276 | 1366 | | TAD CORE | |
| 7277 | 0367 | | AND LOCC | |
| 7300 | 4267 | | JMS RTRS | |
| 7301 | 7012 | | RTR | |
| 7302 | 7010 | | RAR | |
| 7303 | 1374 | | TAD INCR | |
| 7304 | 4743 | | JMS I PRTT | |
| 7305 | 1366 | | TAD CORE | |
| 7306 | 0371 | | AND LOC2 | |
| 7307 | 4267 | | JMS RTRS | |
| 7310 | 1374 | | TAD INCR | |
| 7311 | 4743 | | JMS I PRTT | |
| 7312 | 1366 | | TAD CORE | |
| 7313 | 0372 | | AND LOC3 | |
| 7314 | 7012 | | RTR | |
| 7315 | 7010 | | RAR | |
| 7316 | 1374 | | TAD INCR | |
| 7317 | 4743 | | JMS I PRTT | |
| 7320 | 1366 | | TAD CORE | |
| 7321 | 0373 | | AND LOC4 | |
| 7322 | 1374 | | TAD INCR | |

| | | | | |
|------|------|-------|------------|---------------------|
| 7323 | 4743 | | JMS I PRTT | |
| 7324 | 5674 | | JMP I OTPT | |
| 7325 | 4770 | RUSB, | JMS I XNOR | |
| 7326 | 4752 | | JMS I STRZ | |
| 7327 | 3366 | | DCA CORE | |
| 7330 | 4760 | | JMS I CRXH | |
| 7331 | 1366 | RCOR, | TAD CORE | |
| 7332 | 3756 | | DCA I ACOR | |
| 7333 | 2356 | | ISZ ACOR | |
| 7334 | 7000 | | NOP | |
| 7335 | 1356 | | TAD ACOR | |
| 7336 | 1357 | | TAD TST3 | |
| 7337 | 7640 | | SZA CLA | |
| 7340 | 5331 | | JMP RCOR | |
| 7341 | 3356 | | DCA ACOR | |
| 7342 | 5745 | | JMP I RDYY | |
| 7343 | 7453 | PRTT, | PRTN | |
| 7344 | 0000 | HOLD, | 0 | |
| 7345 | 7003 | RDYY, | REDY | |
| 7346 | 7540 | TKS2, | 7540 | |
| 7347 | 0000 | NXT4, | 0 | |
| 7350 | 0000 | LOC5, | 0 | |
| 7351 | 0000 | PARR, | 0 | |
| 7352 | 6720 | STRZ, | STRT | |
| 7353 | 7514 | FROM, | FRM2 | |
| 7354 | 7476 | XPRR, | ERCN | |
| 7355 | 7103 | NPUT, | IPUT | |
| 7356 | 0000 | ACOR, | 0 | |
| 7357 | 1200 | TST3, | 1200 | |
| 7360 | 6702 | CRXH, | CRLF | |
| 7361 | 7475 | CCCC, | 7475 | |
| 7362 | 7470 | HHHH, | 7470 | |
| 7363 | 7111 | READ, | TYIN | |
| 7364 | 7563 | RETR, | 7563 | |
| 7365 | 7400 | XROR, | EROR | |
| 7366 | 0000 | CORE, | 0 | |
| 7367 | 7000 | LOCC, | 7000 | |
| 7370 | 7466 | XNOR, | TYPS | |
| 7371 | 0700 | LOC2, | 0700 | |
| 7372 | 0070 | LOC3, | 0070 | |
| 7373 | 0007 | LOC4, | 0007 | |
| 7374 | 0260 | INCR, | 260 | |
| 7375 | 0000 | CPXP, | 0 | |
| | | *7400 | | |
| 7400 | 1776 | EROR, | TAD I SCRN | /HOLD FIRST NUMBER |
| 7401 | 3351 | | DCA XHLD | |
| 7402 | 1353 | | TAD COMA | |
| 7403 | 1775 | | TAD I CPXX | |
| 7404 | 7640 | | SZA CLA | |
| 7405 | 5276 | | JMP ERCN | |
| 7406 | 4765 | | JMS I XXXX | |
| 7407 | 3355 | | DCA KEEP | /HOLD SECOND NUMBER |

| | | | | |
|------|------|-------|------------|-------------------|
| 7410 | 4777 | XNOW, | JMS I NIKN | |
| 7411 | 1356 | | TAD RTRN | |
| 7412 | 7440 | | SZA | |
| 7413 | 5276 | | JMP ERCN | |
| 7414 | 4770 | | JMS I CRLX | |
| 7415 | 1355 | DORX, | TAD KEEP | |
| 7416 | 7040 | | CMA | |
| 7417 | 1351 | | TAD XHLD | |
| 7420 | 3364 | | DCA RKEP | |
| 7421 | 1351 | NOTT, | TAD XHLD | |
| 7422 | 4766 | | JMS I NCCR | |
| 7423 | 4266 | | JMS TYP5 | |
| 7424 | 1751 | GONE, | TAD I XHLD | |
| 7425 | 4766 | | JMS I NCCR | |
| 7426 | 4770 | | JMS I CRLX | |
| 7427 | 2364 | | ISZ RKEP | |
| 7430 | 5232 | | JMP INTR | |
| 7431 | 5773 | | JMP I XXRT | |
| 7432 | 1351 | INTR, | TAD XHLD | |
| 7433 | 7001 | | IAC | |
| 7434 | 3351 | | DCA XHLD | |
| 7435 | 5221 | | JMP NOTT | |
| 7436 | 4770 | NOW2, | JMS I CRLX | /READY SUBROUTINE |
| 7437 | 1357 | | TAD N322 | |
| 7440 | 4253 | | JMS PRTN | |
| 7441 | 1360 | | TAD N305 | |
| 7442 | 4253 | | JMS PRTN | |
| 7443 | 1361 | | TAD N301 | |
| 7444 | 4253 | | JMS PRTN | |
| 7445 | 1362 | | TAD N304 | |
| 7446 | 4253 | | JMS PRTN | |
| 7447 | 1363 | | TAD N331 | |
| 7450 | 4253 | | JMS PRTN | |
| 7451 | 4770 | | JMS I CRLX | |
| 7452 | 5750 | | JMP I XTUR | |
| 7453 | 0000 | PRTN, | 0 | |
| 7454 | 6041 | | TSF | |
| 7455 | 5254 | | JMP PRTN+I | |
| 7456 | 6046 | | TL5 | |
| 7457 | 7300 | | CLA CLL | |
| 7460 | 5653 | | JMP I PRTN | |
| 7461 | 0000 | RTLX, | 0 | |
| 7462 | 7106 | | CLL RTL | |
| 7463 | 7006 | | RTL | |
| 7464 | 7006 | | RTL | |
| 7465 | 5661 | | JMP I RTLX | |
| 7466 | 0000 | TYP5, | 0 | |
| 7467 | 1371 | | TAD N240 | |

| | | | |
|------|------|-------|------------|
| 7470 | 4253 | | JMS PRTN |
| 7471 | 1372 | | TAD N275 |
| 7472 | 4253 | | JMS PRTN |
| 7473 | 1371 | | TAD N240 |
| 7474 | 4253 | | JMS PRTN |
| 7475 | 5666 | | JMP I TYP5 |
| 7476 | 7300 | ERCN, | CLA CLL |
| 7477 | 4770 | | JMS I CRLX |
| 7500 | 1360 | | TAD N305 |
| 7501 | 4253 | | JMS PRTN |
| 7502 | 1357 | | TAD N322 |
| 7503 | 4253 | | JMS PRTN |
| 7504 | 1357 | | TAD N322 |
| 7505 | 4253 | | JMS PRTN |
| 7506 | 1374 | | TAD N317 |
| 7507 | 4253 | | JMS PRTN |
| 7510 | 1357 | | TAD N322 |
| 7511 | 4253 | | JMS PRTN |
| 7512 | 4770 | | JMS I CRLX |
| 7513 | 5773 | | JMP I XXRT |
| 7514 | 0000 | FRM2, | 0 |
| 7515 | 1371 | | TAD N240 |
| 7516 | 4253 | | JMS PRTN |
| 7517 | 1347 | | TAD N306 |
| 7520 | 4253 | | JMS PRTN |
| 7521 | 1357 | | TAD N322 |
| 7522 | 4253 | | JMS PRTN |
| 7523 | 1374 | | TAD N317 |
| 7524 | 4253 | | JMS PRTN |
| 7525 | 1346 | | TAD N315 |
| 7526 | 4253 | | JMS PRTN |
| 7527 | 1371 | | TAD N240 |
| 7530 | 4253 | | JMS PRTN |
| 7531 | 5714 | | JMP I FRM2 |
| 7532 | 3345 | INST, | DCA HLDA |
| 7533 | 5743 | | JMP I CRED |
| 7534 | 1345 | ICOR, | TAD HLDA |
| 7535 | 4766 | | JMS I NCCR |
| 7536 | 4266 | | JMS TYP5 |
| 7537 | 4744 | | JMS I STRX |
| 7540 | 3745 | | DCA I HLDA |
| 7541 | 2345 | | ISZ HLDA |
| 7542 | 5743 | | JMP I CRED |
| 7543 | 7130 | CRED, | NSSS |
| 7544 | 6720 | STRX, | STRT |
| 7545 | 0000 | HLDA, | 0 |
| 7546 | 0315 | N315, | 315 |
| 7547 | 0306 | N306, | 306 |
| 7550 | 7004 | XTUR, | NTPE |

| | | | |
|------|------|-------|------|
| 7551 | ØØØØ | XHLD, | Ø |
| 7552 | ØØØØ | TEM2, | Ø |
| 7553 | 7524 | COMA, | 7524 |
| 7554 | Ø254 | N254, | 254 |
| 7555 | ØØØØ | KEEP, | Ø |
| 7556 | 7563 | RTRN, | 7563 |
| 7557 | Ø322 | N322, | 322 |
| 756Ø | Ø3Ø5 | N3Ø5, | 3Ø5 |
| 7561 | Ø3Ø1 | N3Ø1, | 3Ø1 |
| 7562 | Ø3Ø4 | N3Ø4, | 3Ø4 |
| 7563 | Ø331 | N331, | 331 |
| 7564 | ØØØØ | RKEP, | Ø |
| 7565 | 672Ø | XXXX, | STRT |
| 7566 | 7274 | NCCR, | OTPT |
| 7567 | 71Ø3 | XPUT, | IPUT |
| 757Ø | 67Ø2 | CRLX, | CRLF |
| 7571 | Ø24Ø | N24Ø, | 24Ø |
| 7572 | Ø275 | N275, | 275 |
| 7573 | 7ØØ3 | XXRT, | REDY |
| 7574 | Ø317 | N317, | 317 |
| 7575 | 7375 | CPXX, | CPXP |
| 7576 | 7344 | SCRN, | HOLD |
| 7577 | 7111 | NIKN, | TYIN |

| | |
|------|------|
| ACOR | 7356 |
| ASTR | 7166 |
| BEGN | 7Ø52 |
| BNWT | 66ØØ |
| BPUN | 6666 |
| CAMA | 677Ø |
| CCCC | 7361 |
| CCHK | 715Ø |
| CHEK | 6711 |
| CHNG | 7163 |
| COMA | 7553 |
| CORE | 7366 |
| CPXP | 7375 |
| CPXX | 7575 |
| CRED | 7543 |
| CRLF | 67Ø2 |
| CRLN | 7156 |
| CRLX | 757Ø |
| CRXH | 736Ø |
| DEC2 | 7Ø56 |
| DLLR | 7144 |
| DORX | 7415 |
| ERCN | 7476 |
| EROR | 74ØØ |
| ERRR | 6771 |

| | |
|------|------|
| FRM2 | 7514 |
| FROM | 7353 |
| FRST | 6746 |
| GONE | 7424 |
| HETR | 7241 |
| HHHH | 7362 |
| HLDA | 7545 |
| HLD6 | 6767 |
| HLD9 | 6772 |
| HOLD | 7344 |
| HTHR | 7161 |
| ICOR | 7534 |
| INCR | 7374 |
| INDR | 7167 |
| INSR | 7155 |
| INST | 7532 |
| INTR | 7432 |
| IPUT | 7103 |
| KEEP | 7555 |
| LDER | 6620 |
| LISN | 7213 |
| LIST | 7164 |
| LOCA | 6760 |
| LOCC | 7367 |
| LOC2 | 7371 |
| LOC3 | 7372 |
| LOC4 | 7373 |
| LOC5 | 7350 |
| LONN | 7170 |
| LOOK | 7044 |
| LSTC | 7050 |
| LTPX | 6776 |
| MEMD | 7147 |
| NCCD | 6762 |
| NCCR | 7566 |
| NCCX | 6774 |
| NDOP | 7174 |
| NDOR | 7251 |
| NDOX | 7250 |
| NIKN | 7577 |
| NNOR | 6624 |
| NNOX | 6631 |
| NN12 | 6773 |
| NOTT | 7421 |
| NOW2 | 7436 |
| NOW3 | 7200 |
| NPUT | 7355 |
| NRON | 7171 |
| NSIR | 7175 |
| NSSS | 7130 |

| | |
|------|------|
| NTPÉ | 7004 |
| NXT4 | 7347 |
| N200 | 6775 |
| N222 | 6750 |
| N240 | 7571 |
| N254 | 7554 |
| N275 | 7572 |
| N301 | 7561 |
| N304 | 7562 |
| N305 | 7560 |
| N306 | 7547 |
| N315 | 7546 |
| N317 | 7574 |
| N322 | 7557 |
| N331 | 7563 |
| OCOR | 7122 |
| OOOO | 7157 |
| OTPT | 7274 |
| PARR | 7351 |
| PDP7 | 6763 |
| PDP9 | 6761 |
| PRTN | 7453 |
| PRTT | 7343 |
| RCOR | 7331 |
| RDDY | 7145 |
| RDYX | 6777 |
| RDYY | 7345 |
| READ | 7363 |
| REDY | 7003 |
| REM2 | 6756 |
| RETN | 7173 |
| RETR | 7364 |
| RKEP | 7564 |
| RTLS | 6753 |
| RTLX | 7461 |
| RTRN | 7556 |
| RTRS | 7267 |
| RTRX | 6757 |
| RUSB | 7325 |
| SCND | 6747 |
| SCOR | 7076 |
| SCRN | 7576 |
| SECN | 7151 |
| SERH | 7224 |
| SNER | 6754 |
| SNOR | 7152 |
| SPAC | 6766 |
| SPCE | 7172 |
| SRCH | 7153 |

| | |
|------|------|
| STRT | 6720 |
| STRX | 7544 |
| STRZ | 7352 |
| TAKE | 6765 |
| TEM2 | 7552 |
| TEM8 | 7162 |
| THRD | 6752 |
| TKS2 | 7346 |
| TLS2 | 6755 |
| TOKI | 6647 |
| TRST | 6643 |
| TST3 | 7357 |
| TTTT | 7160 |
| TUNE | 7205 |
| TYIN | 7111 |
| TYPS | 7466 |
| TYPT | 7115 |
| TYP8 | 6764 |
| WRIT | 7177 |
| WRTE | 7176 |
| XCOR | 7165 |
| XHLD | 7551 |
| XNOR | 7370 |
| XNOW | 7410 |
| XPPP | 7146 |
| XPRR | 7354 |
| XPUT | 7567 |
| XROR | 7365 |
| XRUN | 7154 |
| XRUU | 7137 |
| XTUR | 7550 |
| XXRT | 7573 |
| XXXX | 7565 |
| ZCOR | 6751 |

