



DECUS

PROGRAM LIBRARY

DECUS NO.	8-282
TITLE	C528: PAPER TAPE CONVERSION 5 TRACK (SIRIUS) TO 8 TRACK (A.S.C.I.I.)
AUTHOR	A. J. P. Gore
COMPANY	The Nature Conservancy Merlewood Research Station Grange-over-Sands Lancashire, England
DATE	August 8, 1970
SOURCE LANGUAGE	PAL-D

DECLUS

PROGRAM 1000000



DECLUS

PROGRAM 1000000

DECLUS

PROGRAM 1000000

DECLUS

PROGRAM 1000000

C528: PAPER TAPE CONVERSION - 5 TRACK (SIRIUS) TO 8 TRACK (A.S.C.I.I.)

DECUS Program Library Write-up

DECUS No. 8-282

ABSTRACT

5 track paper tape (Ferranti, Sirius) is translated into 8 track paper tape (ASCII). This is done by inverting the 5 track tape to make the 3 tracks and sprocket holes to coincide with the corresponding facilities of the 8 track tape readers of the PDP-8, in this case the high speed reader. It is important to ensure that alignment is maintained, hence reference in the specifications to a special attachment in the HSR pouch. This attachment merely guides the 5 track tape and any method which achieves this will do equally well.

Punching Instructions (Creed)

1. Run out a few inches of blank tape.
2. Turn tape over and mark with direction arrow ↓ .
3. Punch CR/LF.
4. Symbol equivalents where different:

5 Track (Sirius)

≠
√
→
x (multiply sign)
n
£

8 Track (A.S.C.I.I.)

TAB
;
BELL
" (quotes)
' (single quote)
\$

5. At end of a program or of data punch at least 10 > symbols.
6. Run out final few inches of blank tape.

Tapes Required

Form of program - The program is written in PDP-8 PALD Assembler language and will normally reside on the disk under the title C528. A master copy of the program is available.

Form of data tape - Any 5 Track tape complying with the requirements of Punching Instructions above.

Operating Instructions

Place 5 Track blank tape on the photo-electric sensor in the high speed reader (H.S.R.) with

the direction arrow uppermost and the sprockets correctly meshed in. The tape should be rolled, and special attachment used in H.S.R. pouch.

```
.LOAD
*IN-S: C528
*
*OPT-1
ST = 200
↑ ↑ (First up-arrow automatic.
      Second up-arrow after CNTL P)
```

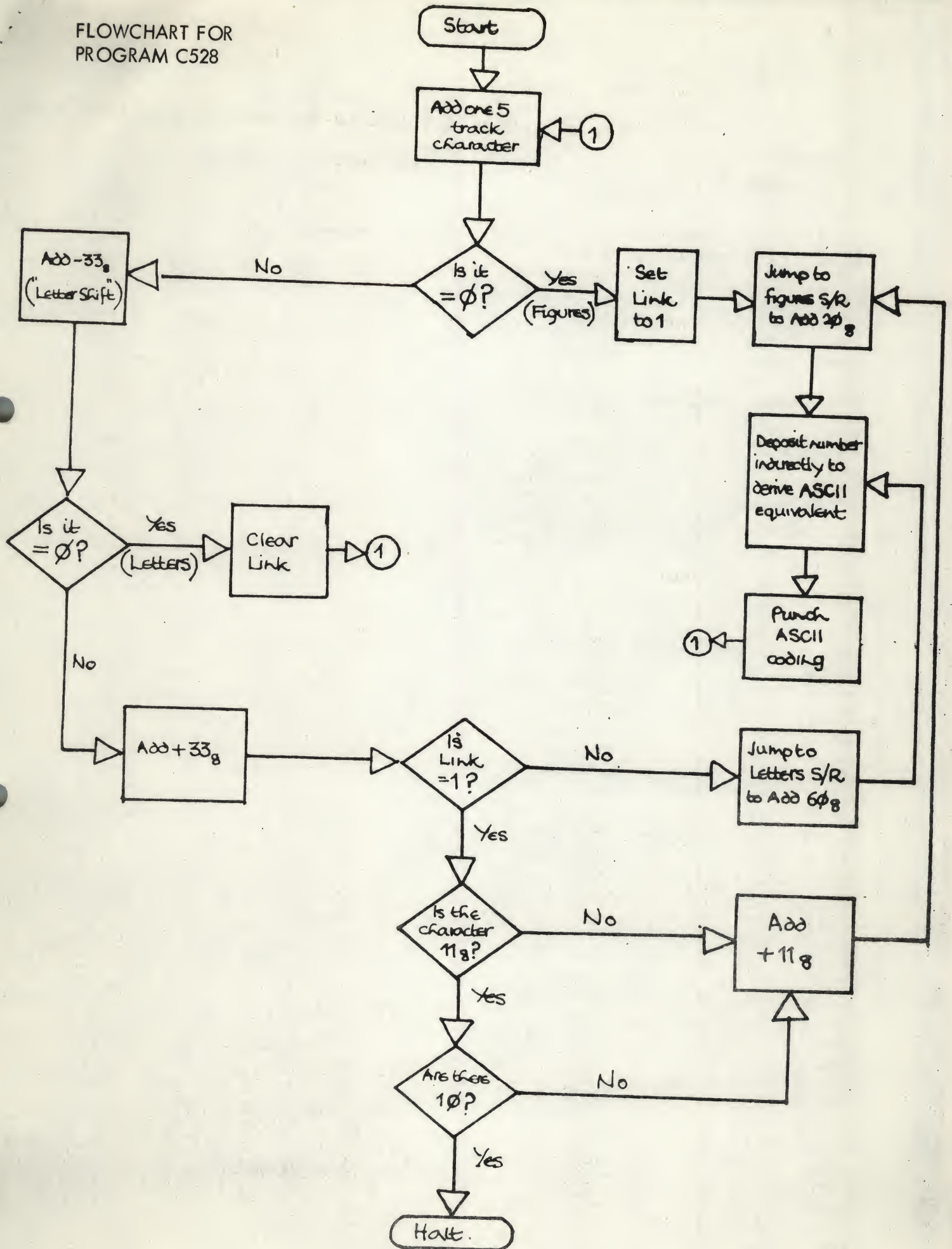
After the second up-arrow, switch on the high speed punch (H.S.P.) and then type CTRL P when the 5 Track tape will read in and 8 Track tape will be output. Ensure that the fan fold tape is folding properly or allow it to fall outside by lifting it out of the bin.

On completion of the conversion the 5 Track tape will stop reading in and should be removed. Run out blank 8 Track tape before removing from H.S.P.

With 7600 (Binary) toggled into the Switch Register (it will normally be in this condition) press LOAD ADD key then the START key when control will return to the monitor as indicated by a period . being typed by the teletype.

WARNING: 5 Track tapes should not be folded or stretched unduly by rolling too tightly, otherwise errors will occur in the conversion.

FLOWCHART FOR
PROGRAM C528



/C528 5 TRACK TO 8 TRACK CONVERSION (H.S.R

. VERSION)

/24.8.70

```

*200
0200 7300 BEGIN, CLA CLL
0201 1316 TAD SUBTR
0202 3321 DCA KSUE
0203 1317 TAD MCNT
0204 3320 DCA CNTR
0205 6026 PLS
0206 6014 RFC
0207 4261 BGLISN, JMS LISN
0210 7440 SZA
0211 5214 JMP.+3
0212 4300 JMS FIGS
0213 5215 JMP.+2
0214 5217 JMP NONZER
0215 4270 BGPUNCH, JMS PUNCH
0216 5207 JMP BGLISN
    
```

```

0217 7041 NONZER, CIA
0220 1327 TAD K33
0221 7041 CIA
0222 7440 SZA
0223 5232 JMP RSTOR
0224 3322 DCA L
0225 4261 JMS LISN
0226 7440 SZA
0227 5231 JMP.+2
0230 5300 JMP FIGS
0231 5217 JMP NONZER
0232 1327 RSTOR, TAD K33
0233 3324 DCA RESTR
0234 1322 TAD L
0235 7100 CLL
0236 7010 RAR
0237 7420 SNL
0240 5255 JMP RSLTS
0241 7300 CLA CLL
0242 1324 TAD RESTR
0243 7041 CIA
0244 1325 TAD K11
0245 7041 CIA
0246 7440 SZA
0247 5253 JMP.+4
0250 2320 ISZ CNTR
0251 5253 JMP.+2
0252 7402 HLT
0253 1325 TAD K11
0254 5305 JMP SGIF
0255 7300 RSLTS, CLA CLL
0256 1324 TAD RESTR
    
```

/ADD -11

/

/

/IS IT ZERO?

/NO

/YES, ARE THERE 10?

/NO

/YES

/RESTORE NUMBER

0257	4311		JMS LETRS
0260	5215		JMP BGNCH
0261	0000	LISN,	0
0262	6011		RSF
0263	5262		JMP.-1
0264	7200		CLA
0265	6016		RRB RFC
0266	0321		AND KSUB
0267	5661		JMP I LISN
0270	0000	PUNCH,	0
0271	6021		PSF
0272	5271		JMP.-1
0273	6026		PLS
0274	7200		CLA
0275	3323		DCA STORE
0276	3324		DCA RESTR
0277	5670		JMP I PUNCH

0300	0000	FIGS,	0
0301	3322		DCA L
0302	7120		STL
0303	7004		RAL
0304	3322		DCA L
0305	1330	SGIF,	TAD K60
0306	3323		DCA STORE
0307	1723		TAD I STORE
0310	5700		JMP I FIGS

0311	0000	LETRS,	0
0312	1326		TAD K20
0313	3323		DCA STORE
0314	1723		TAD I STORE
0315	5711		JMP I LETRS

0316	0037	SUBTR,	037
0317	7766	MCNT,	-12
0320	0000	CNTR,	0
0321	0000	KSUB,	0
0322	0000	L,	0
0323	0000	STORE,	0
0324	0000	RESTR,	0
0325	0011	K11,	11
0326	0020	K20,	20
0327	0033	K33,	33
0330	0060	K60,	60

/10 DECIMAL NUMBERS

0020	0000	*20	
0021	0320	NRRS,	0000
			0320

0022	0310	0310
0023	0330	0330
0024	0304	0304
0025	0324	0324
0026	0314	0314
0027	0256	0256
0030	0302	0302
0031	0322	0322
0032	0312	0312
0033	0332	0332
0034	0306	0306
0035	0326	0326
0036	0316	0316
0037	0244	0244
0040	0301	0301
0041	0321	0321
0042	0311	0311
0043	0331	0331
0044	0305	0305
0045	0325	0325
0046	0315	0315
0047	0277	0277
0050	0303	0303
0051	0323	0323
0052	0313	0313
0053	0240	0240
0054	0307	0307
0055	0327	0327
0056	0317	0317
0057	0377	0377
0060	0000	0000
0061	0260	0260
0062	0270	0270
0063	0242	0242
0064	0264	0264
0065	0207	0207
0066	0273	0273
0067	0256	0256
0070	0262	0262
0071	0200	0200
0072	0275	0275
0073	0253	0253
0074	0251	0251
0075	0266	0266
0076	0240	0240
0077	0215	0215
0100	0261	0261
0101	0276	0276
0102	0211	0211
0103	0271	0271
0104	0250	0250
0105	0265	0265
0106	0212	0212
0107	0247	0247
0110	0252	0252
0111	0263	0263

0112 0255
0113 0240
0114 0267
0115 0257
0116 0254
0117 0377

0255
0240
0267
0257
0254
0377

'BS

.

